

FEDERAL AVIATION ADMINISTRATION
FLIGHT STANDARDS SERVICE
STANDARD TERMINAL ARRIVAL (STAR)

Bearings, headings, courses, tracks and radials are magnetic. Elevations and altitudes are in feet, MSL. Altitudes are minimum altitudes unless otherwise indicated.
Distances are in nautical miles (NM). Graphic depictions attached.

Arrival Name	Number	STAR Computer Code	Superseded Number	Dated	Effective Date
FLATI (RNAV)	THREE	FLATI.FLATI3	TWO	12/31/2020	7 OCT 21

TRANSITION ROUTES:

Transition Name	Transition Computer Codes	From FIX/NAVAID	To FIX/NAVAID	Course	Distance	MEA	MOCA	MAA	Crossing Altitudes / Fixes
HIPEE	HIPEE.FLATI3	HIPEE	HIPEE						AT/ABOVE FL270
			FOLSM	106.95	17.23	FL190			
			BBOCO	107.21	11.37	FL190			
			FLATI	107.36	13.41	FL190			BETWEEN FL190 AND FL220
MJANE	MJANE.FLATI3	MJANE	MJANE						
			MSTSH	099.87	47.28	FL270			
			HIPEE	100.51	52.72	FL270			AT/ABOVE FL270
			FOLSM	106.95	17.23	FL190			
			BBOCO	107.21	11.37	FL190			
			FLATI	107.36	13.41	FL190			BETWEEN FL190 AND FL220
TOFUU	TOFUU.FLATI3	TOFUU	TOFUU						
			GNOLA	123.78	33.82	FL270			
			HIPEE	124.10	52.72	FL270			AT/ABOVE FL270
			FOLSM	106.95	17.23	FL190			
			BBOCO	107.21	11.37	FL190			
			FLATI	107.36	13.41	FL190			BETWEEN FL190 AND FL220

ARRIVAL ROUTE DESCRIPTION:

FROM FLATI ON TRACK 107.53/12.16 TO CROSS ELLDO BETWEEN 16000 AND FL210 AND AT 250 KIAS.

LANDING RWY 7, 8: FROM ELLDO ON TRACK 131.65/10.50 TO CROSS MLVVA AT 14000, THEN ON TRACK 131.65. EXPECT RADAR VECTORS TO FINAL APPROACH COURSE.

LANDING RWY 16L/R: FROM ELLDO ON TRACK 099.19/6.00 TO CROSS BSAFE AT OR BELOW 15000, THEN ON TRACK 099.36/7.79 TO CROSS BDUNN BETWEEN 14000 AND 15000 AND AT 210 KIAS, THEN ON TRACK 099.28/6.97 TO CROSS TSHNR AT 13000 AND AT 210 KIAS. EXPECT ILS OR LOC RWY 16L/R APPROACH.

LANDING RWY 17L/R: FROM ELLDO ON TRACK 099.19/6.00 TO CROSS BSAFE AT OR BELOW 15000, THEN ON TRACK 099.36/7.79 TO CROSS BDUNN BETWEEN 14000 AND 15000 AND AT 210 KIAS, THEN ON TRACK 099.28/6.97 TO CROSS TSHNR AT 13000 AND AT 210 KIAS. EXPECT ILS OR LOC RWY 17L/R APPROACH.

LANDING RWY 25, 26: FROM ELLDO ON TRACK 136.56/17.26 TO CROSS TOTTT BETWEEN 15000 AND 17000, THEN ON TRACK 136.68/3.00 TO YESSS, THEN ON TRACK 132.82/9.08 TO CROSS SKEWD BETWEEN 13000 AND 15000 AND AT 250 KIAS, THEN ON TRACK 117.50/4.70 TO CROSS LEKEE AT OR ABOVE 12000, THEN ON TRACK 117.55/5.24 TO XCUTV, THEN ON TRACK 082.50/3.30 TO CROSS CAPTJ AT 11000 AND AT 210 KIAS, THEN ON TRACK 082.50. EXPECT RADAR VECTORS TO FINAL APPROACH COURSE.

LANDING RWY 34L/R, 35L: FROM ELLDO ON TRACK 136.56/17.26 TO CROSS TOTTT BETWEEN 15000 AND 17000, THEN ON TRACK 136.68/3.00 TO YESSS, THEN ON TRACK 148.58/8.91 TO CROSS BAACK AT OR ABOVE 13000, THEN ON TRACK 148.27/5.00 TO CROSS BABAA BETWEEN 12000 AND 14000 AND AT 250 KIAS, THEN ON TRACK 173.17/10.95 TO CROSS HIMOM AT 11000 AND AT 210 KIAS, THEN ON TRACK 173.17. EXPECT RADAR VECTORS TO FINAL APPROACH COURSE.

LANDING RWY 35R: FROM ELLDO ON TRACK 136.56/17.26 TO CROSS TOTTT BETWEEN 15000 AND 17000, THEN ON TRACK 136.68/3.00 TO YESSS, THEN ON TRACK 132.82/9.08 TO CROSS SKEWD BETWEEN 13000 AND 15000 AND AT 250 KIAS, THEN ON TRACK 117.50/4.70 TO CROSS LEKEE AT OR ABOVE 12000, THEN ON TRACK 117.55/5.24 TO XCUTV, THEN ON TRACK 117.48/4.00 TO CROSS HDGHG BETWEEN 12000 AND 14000, THEN ON TRACK 117.82/3.13 TO FFFAT, THEN ON TRACK 172.74/6.11 TO CROSS DOGGG AT 11000 AND AT 210 KIAS, THEN ON TRACK 172.74. EXPECT RADAR VECTORS TO FINAL APPROACH COURSE.



FEDERAL AVIATION ADMINISTRATION
FLIGHT STANDARDS SERVICE
STANDARD TERMINAL ARRIVAL (STAR)

Bearings, headings, courses, tracks and radials are magnetic. Elevations and altitudes are in feet, MSL. Altitudes are minimum altitudes unless otherwise indicated.
Distances are in nautical miles (NM). Graphic depictions attached.

Arrival Name	Number	STAR Computer Code	Superseded Number	Dated	Effective Date
FLATI (RNAV)	THREE	FLATI.FLATI3	TWO	12/31/2020	7 OCT 21

PROCEDURAL DATA NOTES:

NOTE: TURBOJET AIRCRAFT ONLY.

NOTE: TURBOJET AIRCRAFT DESCEND VIA MACH NUMBER UNTIL INTERCEPTING 280 KIAS. MAINTAIN 280 KIAS UNTIL SLOWED BY STAR.

NOTE: DENVER CENTER WILL ISSUE "DESCEND VIA" CLEARANCE AND LANDING DIRECTION.

NOTE: HIPEE ENROUTE TRANSITION: DO NOT FILE – TO BE ASSIGNED BY ATC.

NOTE: EXPECT RUNWAY ASSIGNMENT ON INITIAL CONTACT WITH DENVER TRACON.

NOTE: LANDING NORTH SELECT RWY 34R TRANSITION. NOTE: LANDING SOUTH SELECT RWY 16R TRANSITION.

NOTE: LANDING EAST SELECT RWY 7 TRANSITION. NOTE: LANDING WEST SELECT RWY 26 TRANSITION.

PBN REQUIREMENT NOTES:

NOTE: RNAV 1 - DME/DME/IRU OR GPS.

EQUIPMENT REQUIREMENT NOTES:

RADAR REQUIRED FOR NON-GPS EQUIPPED AIRCRAFT.

FIXES AND/OR HOLDING PATTERNS:

CHART HOLDING AT BBOCO: HOLD W, LT, 107.21 INBOUND, 11 NM LEGS.

CHART HOLDING AT ELLDO: HOLD W, RT, 107.53 INBOUND, 10 NM LEGS.

CHART HOLDING AT GNOLA: HOLD NW, LT, 123.78 INBOUND, 12 NM LEGS.

CHART HOLDING AT HIPEE: HOLD W, LT, 100.51 INBOUND, 12 NM LEGS.

CHART HOLDING AT MSTSH: HOLD W, RT, 099.87 INBOUND, 12 NM LEGS.

CHART YYALE AND HOLDING AT YYALE: HOLD W, LT, 092.00 INBOUND, 12 NM LEGS.

COMMUNICATIONS:

CHART: DENVER APP CON

CHART: DENVER TOWER

AIRPORTS SERVED:

DENVER INTL, DENVER, CO (KDEN)

LOST COMMUNICATIONS PROCEDURE:

IN THE EVENT OF LOST COMMUNICATIONS PRIOR TO RUNWAY TRANSITION ASSIGNMENT, WHEN DEN IS LANDING SOUTH, EXECUTE THE ILS RWY 16R, WHEN DEN IS LANDING NORTH, EXECUTE THE ILS RWY 34R.

REMARKS:

MEA'S FL190 AND ABOVE NEEDED TO MITIGATE CRITICAL DME'S AND INSURE ADEQUATE SIGNAL RECEPTION FOR DME/DME/IRU NAVIGATION.

ADDITIONAL FLIGHT DATA:

DME/DME ASSESSMENT: SAT (RNP 2.0)

REFERENCE MAGNETIC VARIATION = KDEN 08E/2015

CHART AT HIMOM TERMINUS: LDG KDEN RWYS 34L/R, AND 35L

CHART AT TSHNR TERMINUS: LDG KDEN RWYS 16L/R AND 17L/R

FEDERAL AVIATION ADMINISTRATION
FLIGHT STANDARDS SERVICE
STANDARD TERMINAL ARRIVAL (STAR)

Bearings, headings, courses, tracks and radials are magnetic. Elevations and altitudes are in feet, MSL. Altitudes are minimum altitudes unless otherwise indicated.
Distances are in nautical miles (NM). Graphic depictions attached.

Arrival Name	Number	STAR Computer Code	Superseded Number	Dated	Effective Date
FLATI (RNAV)	THREE	FLATI.FLATI3	TWO	12/31/2020	7 OCT 21
CHART AT DOGGG TERMINUS: LDG KDEN RWYS 35R					
CHART AT CAPTJ TERMINUS: LDG KDEN RWYS 25 AND 26					
CHART AT MLVVA TERMINUS: LDG KDEN RWYS 7 AND 8					

FLIGHT INSPECTED BY:

MATTHEW R BUFORD

Name

FICO

Organization

07/27/2021

Date

*Digitally signed by***DONALD H LANIER**

Signature

Jul 28, 2021

*Digitally signed by***DONALD H LANIER**

Signature

Jul 28, 2021

DEVELOPED BY:

Mark Phipps Denver Metroplex Manager

Name

DENVER ARTCC

Organization

4/22/2021

Date

*Digitally signed by***DONALD H LANIER**

Signature

Jul 28, 2021

APPROVED BY:

LONNIE EVERHART

Name

AJV-A430

Organization

Date

CHANGES:

1. RECONFIGURED TRANSITION FOR RWY 7, 8: ADDED ROUTING FOR FIX MLVVA; UPDATED TERMINUS DATA.
2. CHANGED RWY 16L/R EXPECT APPROACH: FROM "EXPECT ILS OR LOC RWY 16L, RWY 16R APPROACH" TO "EXPECT ILS OR LOC RWY 16L/R APPROACH."
3. CHANGED RWY 17L/R EXPECT APPROACH: FROM "EXPECT ILS OR LOC RWY 17L, RWY 17R APPROACH" TO "EXPECT ILS OR LOC RWY 17L/R APPROACH."
4. PROCEDURAL DATA NOTES: CHANGED NOTE FROM "NOTE: HIPEE ENROUTE TRANSITION IS ATC ASSIGNED ONLY - DO NOT FILE." TO "NOTE: HIPEE ENROUTE TRANSITION: DO NOT FILE – TO BE ASSIGNED BY ATC."
5. REFORMATTED RADAR REQUIRED, RNAV 1, DME/DME/IRU OR GPS REQUIRED NOTES TO CURRENT PBN & EQUIPMENT REQUIREMENT NOTES FORMAT.
6. CHANGED RESTRICTION AT FLATI FROM AT OR ABOVE FL190 TO 190B220.
7. ADDED CHART NOTE ABOUT MAINTAINING 280K AND LISTED LANDING DIRECTIONS AND RUNWAYS.

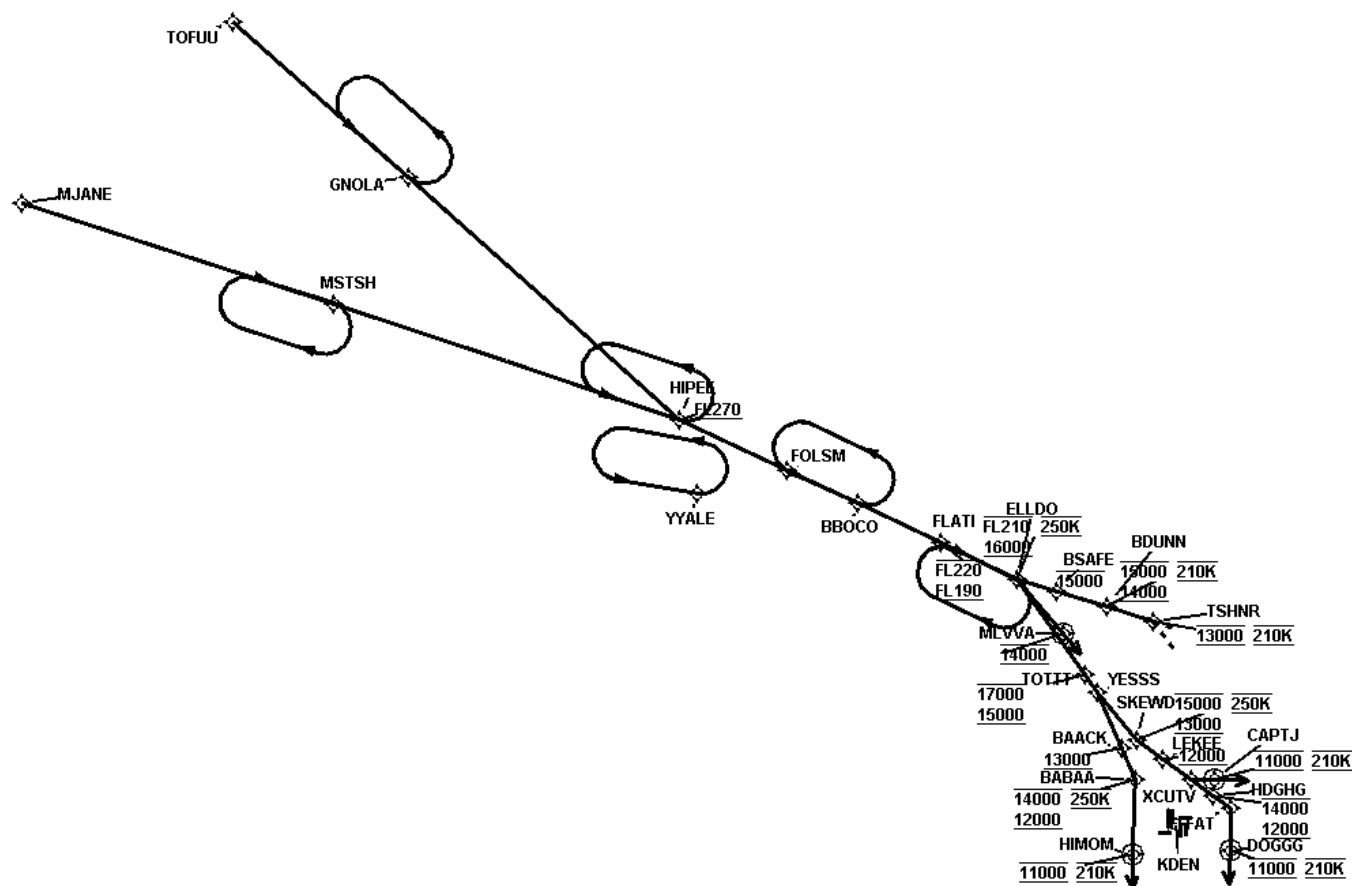
REASONS:

1. REQUIRED FOR AIRCRAFT TO BE IN THE CORRECT POSITION AND ALTITUDE FOR LANDING WEST TO OPTIMIZE CONVERGING LANDING OPERATIONS.
2. STANDARDIZATION OF FORMS, NO CRITERIA GUIDANCE.
3. STANDARDIZATION OF FORMS, NO CRITERIA GUIDANCE.
4. CRITERIA -- IAW 8260.19I, 4-5-2.
5. CRITERIA -- AW 8260.19I, 4-5-3.
6. ATC REQUIRED FOR TBO COMPLIANCE.
7. ATC REQUIRED FOR TBO COMPLIANCE.

FEDERAL AVIATION ADMINISTRATION
FLIGHT STANDARDS SERVICE
STANDARD TERMINAL ARRIVAL (STAR)

Bearings, headings, courses, tracks and radials are magnetic. Elevations and altitudes are in feet, MSL. Altitudes are minimum altitudes unless otherwise indicated.
Distances are in nautical miles (NM). Graphic depictions attached.

Arrival Name	Number	STAR Computer Code	Superseded Number	Dated	Effective Date
FLATI (RNAV)	THREE	FLATI.FLATI3	TWO	12/31/2020	7 OCT 21
Graphic Depiction 1					



FEDERAL AVIATION ADMINISTRATION
FLIGHT STANDARDS SERVICE
STAR (DATA RECORD)

Arrival Name FLATI (RNAV)	Number THREE	STAR Computer Code FLATI.FLATI3	Superseded Number TWO	Dated 12/31/2020	Effective Date 7 OCT 21				
FIX/NAVAID	LAT/LONG	C	FO/FB	LEG TYPE	TC	DIST (NM)	ALTITUDE	SPEED	REMARKS
En Route Transition									
HIPEE	405043.69N / 1061508.14W	Y		IF			AT/ABOVE FL270		HIPEE.FLATI3
FOLSM	404325.52N / 1055435.30W	Y	FB	TF	114.95	17.23			
BBOCO	403833.95N / 1054104.48W	Y	FB	TF	115.21	11.37			
FLATI	403248.03N / 1052510.72W	Y	FB	TF	115.36	13.41	FL190BFL220		
En Route Transition									
MJANE	412234.11N / 1082033.48W	Y		IF					MJANE.FLATI3
MSTSH	410747.60N / 1072100.54W	Y	FB	TF	107.87	47.28			
HIPEE	405043.69N / 1061508.14W	Y	FB	TF	108.51	52.72	AT/ABOVE FL270		
FOLSM	404325.52N / 1055435.30W	Y	FB	TF	114.95	17.23			
BBOCO	403833.95N / 1054104.48W	Y	FB	TF	115.21	11.37			
FLATI	403248.03N / 1052510.72W	Y	FB	TF	115.36	13.41	FL190BFL220		
En Route Transition									
TOFUU	414854.82N / 1074012.49W	Y		IF					TOFUU.FLATI3
GNOLA	412617.12N / 1070640.35W	Y	FB	TF	131.78	33.82			
HIPEE	405043.69N / 1061508.14W	Y	FB	TF	132.10	52.72	AT/ABOVE FL270		
FOLSM	404325.52N / 1055435.30W	Y	FB	TF	114.95	17.23			
BBOCO	403833.95N / 1054104.48W	Y	FB	TF	115.21	11.37			
FLATI	403248.03N / 1052510.72W	Y	FB	TF	115.36	13.41	FL190BFL220		
Common Route									
FLATI	403248.03N / 1052510.72W	Y		IF			FL190BFL220		FLATI.FLATI3
ELLDO	402732.46N / 1051048.22W	Y	FB	TF	115.53	12.16	16000BFL210	AT 250K	

FEDERAL AVIATION ADMINISTRATION
FLIGHT STANDARDS SERVICE
STAR (DATA RECORD)

Arrival Name FLATI (RNAV)	Number THREE	STAR Computer Code FLATI.FLATI3		Superseded Number TWO		Dated 12/31/2020	Effective Date 7 OCT 21		
FIX/NAVAID	LAT/LONG	C	FO/FB	LEG TYPE	TC	DIST (NM)	ALTITUDE	SPEED	REMARKS
Runway Transition									
ELLDO	402732.46N / 1051048.22W	Y		IF			16000BFL210	AT 250K	
MLVVA	401931.66N / 1050154.90W	Y	FO	TF	139.65	10.50	AT 14000		
KDEN:RWY 7,RWY 8				FM	139.65				
Runway Transition									
ELLDO	402732.46N / 1051048.22W	Y		IF			16000BFL210	AT 250K	
BSAFE	402545.73N / 1050317.87W	Y	FB	TF	107.19	06.00	AT/BELOW 15000		
BDUNN	402325.76N / 1045334.10W	Y	FB	TF	107.36	07.79	14000B15000	AT 210K	
TSHNR	402121.13N / 1044451.74W	Y	FB	TF	107.28	06.97	AT 13000	AT 210K	
KDEN:RWY 16L,RWY 16R									
Runway Transition									
ELLDO	402732.46N / 1051048.22W	Y		IF			16000BFL210	AT 250K	
BSAFE	402545.73N / 1050317.87W	Y	FB	TF	107.19	06.00	AT/BELOW 15000		
BDUNN	402325.76N / 1045334.10W	Y	FB	TF	107.36	07.79	14000B15000	AT 210K	
TSHNR	402121.13N / 1044451.74W	Y	FB	TF	107.28	06.97	AT 13000	AT 210K	
KDEN:RWY 17L, RWY 17R									
Runway Transition									
ELLDO	402732.46N / 1051048.22W	Y		IF			16000BFL210	AT 250K	
TOTTT	401327.39N / 1045744.24W	Y	FB	TF	144.56	17.26	15000B17000		
YESSS	401100.39N / 1045528.47W	Y	FB	TF	144.68	03.00			
SKEWD	400357.73N / 1044800.42W	Y	FB	TF	140.82	09.08	13000B15000	AT 250K	
LEKEE	400113.76N / 1044301.57W	Y	FB	TF	125.50	04.70	AT/ABOVE 12000		
XCUTV	395810.74N / 1043728.95W	Y	FB	TF	125.55	05.24			

FEDERAL AVIATION ADMINISTRATION
FLIGHT STANDARDS SERVICE
STAR (DATA RECORD)

Arrival Name FLATI (RNAV)	Number THREE	STAR Computer Code FLATI.FLATI3		Superseded Number TWO		Dated 12/31/2020	Effective Date 7 OCT 21		
FIX/NAVAID	LAT/LONG	C	FO/FB	LEG TYPE	TC	DIST (NM)	ALTITUDE	SPEED	REMARKS
CAPTJ	395808.94N / 1043311.12W	Y	FO	TF	090.50	03.30	AT 11000	AT 210K	
KDEN:RWY 25,RWY 26				FM	090.50				
Runway Transition									
ELLDO	402732.46N / 1051048.22W	Y		IF			16000BFL210	AT 250K	
TOTTT	401327.39N / 1045744.24W	Y	FB	TF	144.56	17.26	15000B17000		
YESSS	401100.39N / 1045528.47W	Y	FB	TF	144.68	03.00			
BAACK	400249.43N / 1045051.84W	Y	FB	TF	156.58	08.91	AT/ABOVE 13000		
BABAA	395814.55N / 1044814.83W	Y	FB	TF	156.27	05.00	12000B14000	AT 250K	
HIMOM	394717.19N / 1044832.22W	Y	FO	TF	181.17	10.95	AT 11000	AT 210K	
KDEN:RWY 34L,RWY 34R,RWY 35L				FM	181.17				
Runway Transition									
ELLDO	402732.46N / 1051048.22W	Y		IF			16000BFL210	AT 250K	
TOTTT	401327.39N / 1045744.24W	Y	FB	TF	144.56	17.26	15000B17000		
YESSS	401100.39N / 1045528.47W	Y	FB	TF	144.68	03.00			
SKEWD	400357.73N / 1044800.42W	Y	FB	TF	140.82	09.08	13000B15000	AT 250K	
LEKEE	400113.76N / 1044301.57W	Y	FB	TF	125.50	04.70	AT/ABOVE 12000		
XCUTV	395810.74N / 1043728.95W	Y	FB	TF	125.55	05.24			
HDGHG	395551.26N / 1043314.89W	Y	FB	TF	125.48	04.00	12000B14000		
FFFAT	395401.30N / 1042957.17W	Y	FB	TF	125.82	03.13			
DOGGG	394754.32N / 1043003.31W	Y	FO	TF	180.74	06.11	AT 11000	AT 210K	
KDEN:RWY 35R				FM	180.74				