

FEDERAL AVIATION ADMINISTRATION
 FLIGHT STANDARDS SERVICE
 STANDARD TERMINAL ARRIVAL (STAR)

Bearings, headings, courses, tracks and radials are magnetic. Elevations and altitudes are in feet, MSL. Altitudes are minimum altitudes unless otherwise indicated. Ceilings are in feet above airport elevation. Distances are in nautical miles. Visibilities are in statute miles or feet RVR unless otherwise indicated.

Arrival Name JOKRS (RNAV)	Number FOUR	STAR Computer Code JOKRS.JOKRS4	Superseded Number THREE	Dated 05/19/2022	Effective Date 19 MAR 2026
-------------------------------------	-----------------------	---	-----------------------------------	----------------------------	--------------------------------------

TRANSITION ROUTES:

Transition Name	Transition Computer Codes	From FIX/NAVAID	To FIX/NAVAID	Course	Distance	MEA	MOCA	MAA	Crossing Altitudes / Fixes
COREA	COREA.JOKRS4	COREA	COREA						
			SIMIE	330.23	47.02	7000	1600		
			FAZES	349.33	23.91	7000	1600		
			MOANS	026.49	16.51	7000	1600		
CSHEL	CSHEL.JOKRS4	CSHEL	JOKRS	016.55	07.31	6000	1600		
			SIMIE	009.30	14.94	7000	1600		
			FAZES	349.33	23.91	7000	1600		
			MOANS	026.49	16.51	7000	1600		
FAZES	FAZES.JOKRS4	FAZES	JOKRS	016.55	07.31	6000	1600		
			MOANS	026.49	16.51	7000	1600		
			JOKRS	016.55	07.31	6000	1600		
FERAL	FERAL.JOKRS4	FERAL	FERAL						
			CSHEL	008.65	30.56	7000	2600		
			SIMIE	009.30	14.94	7000	1600		
			FAZES	349.33	23.91	7000	1600		
			MOANS	026.49	16.51	7000	1600		
MOANS	MOANS.JOKRS4	MOANS	JOKRS	016.55	07.31	6000	1600		
			JOKRS	016.55	07.31	6000	1600		

ARRIVAL ROUTE DESCRIPTION:

LANDING MCO RWY 17L/R, 18L/R: FROM JOKRS ON TRACK 043.31/16.17 TO CROSS TAYYE BETWEEN 10000 AND 12000 AND AT 250 KIAS, THEN ON TRACK 059.88/7.49 TO ARHIP, THEN ON TRACK 005.99/3.25 TO CROSS GIRAF AT OR ABOVE 8000 AND AT 220 KIAS, THEN ON TRACK 005.99/8.60 TO CROSS DVOLA AT 6000 AND AT 210 KIAS, THEN ON TRACK 005.99. EXPECT RADAR VECTORS TO FINAL APPROACH COURSE.

LANDING MCO RWY 35L/R, 36L/R: FROM JOKRS ON TRACK 085.55/16.13 TO CROSS LORRA AT 7000 AND AT 210 KIAS, THEN ON HEADING 096.00. EXPECT RADAR VECTORS TO FINAL APPROACH COURSE.

LANDING LEE/SFB/ISM/MLB/ORL: FROM JOKRS ON TRACK 042.89/7.84 TO ZALEK, THEN ON HEADING 042.89. EXPECT RADAR VECTORS TO FINAL APPROACH COURSE.

PBN REQUIREMENT NOTES:

RNAV 1 - DME/DME/IRU OR GPS



FEDERAL AVIATION ADMINISTRATION
 FLIGHT STANDARDS SERVICE
 STANDARD TERMINAL ARRIVAL (STAR)

Bearings, headings, courses, tracks and radials are magnetic. Elevations and altitudes are in feet, MSL. Altitudes are minimum altitudes unless otherwise indicated.
 Ceilings are in feet above airport elevation. Distances are in nautical miles. Visibilities are in statute miles or feet RVR unless otherwise indicated.

Arrival Name	Number	STAR Computer Code	Superseded Number	Dated	Effective Date
JOKRS (RNAV)	FOUR	JOKRS.JOKRS4	THREE	05/19/2022	19 MAR 2026

EQUIPMENT REQUIREMENT NOTES:

RADAR REQUIRED

PROCEDURAL DATA NOTES:

NOTE: DO NOT FILE COREA, MOANS TRANSITIONS - TO BE ASSIGNED BY ATC.

FIXES AND/OR HOLDING PATTERNS:

CHART HOLDING AT MOANS: HOLD SW, LT, 026.49 INBOUND, 10 NM LEGS.

CHART HOLDING AT FAZES: HOLD S, LT, 349.33 INBOUND, 10 NM LEGS.

CHART HOLDING AT PRICY: HOLD W, RT, 071.64 INBOUND, 10 NM LEGS.

CHART HOLDING AT TOSHE: HOLD S, LT, 340.00 INBOUND, 10 NM LEGS.

COMMUNICATIONS:

AIRPORTS SERVED:

<u>AIRPORT ID</u>	<u>CITY</u>	<u>STATE</u>
MCO	ORLANDO	FL
ORL	ORLANDO	FL
ISM	ORLANDO	FL
LEE	LEESBURG	FL
MLB	MELBOURNE	FL
SFB	ORLANDO	FL

LOST COMMUNICATIONS PREFERENCES:

REMARKS:

LOWEST ASSIGNED ALTITUDE BY ATC AT ZALEK, 3000.

ADDITIONAL FLIGHT DATA:

DME/DME ASSESSMENT: SAT (RNP 2.0)

MAG VAR: MCO 06W/2015

CHART AT LORRA TERMINUS: MCO LDG RWY 35L/R, 36L/R

CHART AT DVOLA TERMINUS: MCO LDG RWY 17L/R, 18L/R

CHART AT ZALEK TERMINUS: LDG ISM/LEE/MLB/ORL/SFB



FEDERAL AVIATION ADMINISTRATION
 FLIGHT STANDARDS SERVICE
 STANDARD TERMINAL ARRIVAL (STAR)

Bearings, headings, courses, tracks and radials are magnetic. Elevations and altitudes are in feet, MSL. Altitudes are minimum altitudes unless otherwise indicated.
 Ceilings are in feet above airport elevation. Distances are in nautical miles. Visibilities are in statute miles or feet RVR unless otherwise indicated.

Arrival Name	Number	STAR Computer Code	Superseded Number	Dated	Effective Date
JOKRS (RNAV)	FOUR	JOKRS.JOKRS4	THREE	05/19/2022	19 MAR 2026

FLIGHT INSPECTED BY:

KENNETH E JACK

ORGANIZATION: DATE:

AJF 12/18/2025

Flight Inspected Signature: _____

Digitally signed by
CASIMIR L TABAKA

Jan 15, 2026

DEVELOPED BY:

RAFAEL A MARTINEZ

AJV-A421 10/21/2025

Developed By Signature: _____

Digitally signed by
CASIMIR L TABAKA

Jan 15, 2026

APPROVED BY:

BEV L BORDY

AJV-A420

Approved By Signature: _____

Digitally signed by
CASIMIR L TABAKA

Jan 15, 2026

CHANGES:

1. REPLACED LYENS TERMINUS POINT WITH DVOLA AND ADDED RESTRICTION AT 6000/210K; UPDATED FM LEG TO MATCH LAST TRACK.
2. MOVED DVOLA WAYPOINT 1.67 NM NORTH TO ALIGN WITH CONNECTION TO NEW RNP RWY 18R IAP.
3. REMOVED ARPT K IDENT FROM 17.1 FORM.

REASONS:

- 1-2. ATC REQUEST.
3. IAW CURRENT DOCUMENTATION STANDARDS.

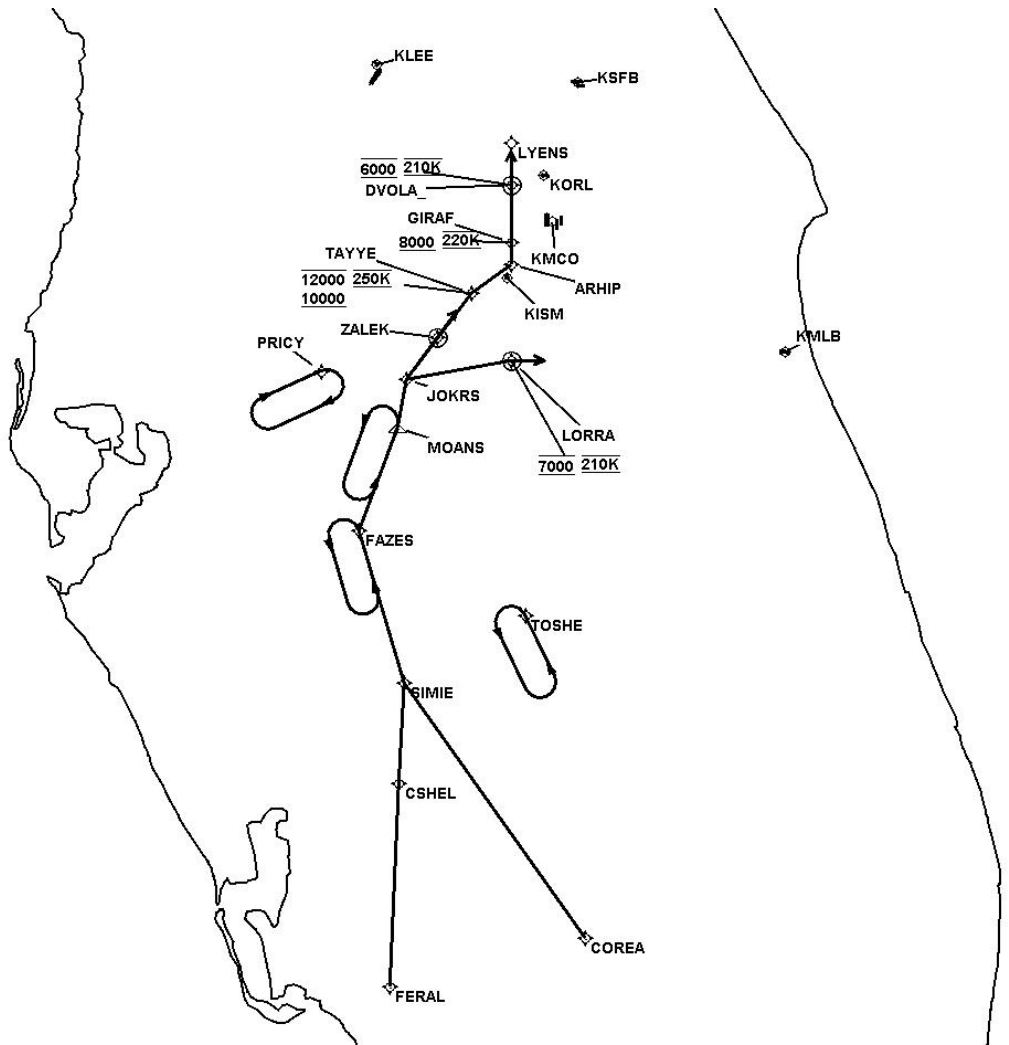


FEDERAL AVIATION ADMINISTRATION
FLIGHT STANDARDS SERVICE
STANDARD TERMINAL ARRIVAL (STAR)

Bearings, headings, courses, tracks and radials are magnetic. Elevations and altitudes are in feet, MSL. Altitudes are minimum altitudes unless otherwise indicated.
Ceilings are in feet above airport elevation. Distances are in nautical miles. Visibilities are in statute miles or feet RVR unless otherwise indicated.

Arrival Name	Number	STAR Computer Code	Superseded Number	Dated	Effective Date
JOKRS (RNAV)	FOUR	JOKRS.JOKRS4	THREE	05/19/2022	19 MAR 2026

Graphic Depiction 1

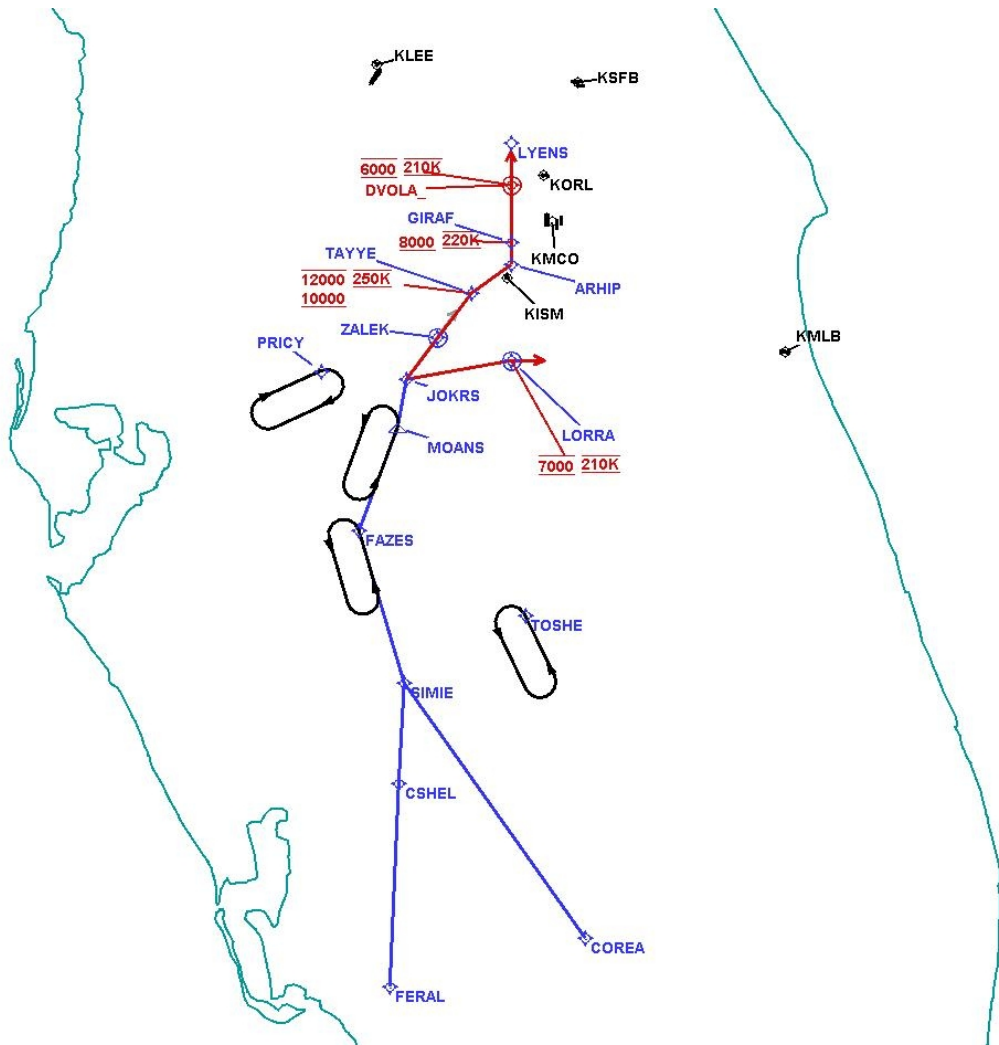


FEDERAL AVIATION ADMINISTRATION
FLIGHT STANDARDS SERVICE
STANDARD TERMINAL ARRIVAL (STAR)

Bearings, headings, courses, tracks and radials are magnetic. Elevations and altitudes are in feet, MSL. Altitudes are minimum altitudes unless otherwise indicated.
Ceilings are in feet above airport elevation. Distances are in nautical miles. Visibilities are in statute miles or feet RVR unless otherwise indicated.

Arrival Name	Number	STAR Computer Code	Superseded Number	Dated	Effective Date
JOKRS (RNAV)	FOUR	JOKRS.JOKRS4	THREE	05/19/2022	19 MAR 2026

Graphic Depiction 2



FEDERAL AVIATION ADMINISTRATION
 FLIGHT STANDARDS SERVICE
 STAR (DATA RECORD)

Arrival Name JOKRS (RNAV)	Number FOUR	STAR Computer Code JOKRS.JOKRS4	Superseded Number THREE	Dated 05/19/2022	Effective Date 19 MAR 2026				
<u>FIX/NAVAID</u>	<u>LAT/LONG</u>	<u>C</u>	<u>FO/FB</u>	<u>LEG TYPE</u>	<u>TC</u>	<u>DIST (NM)</u>	<u>ALTITUDE</u>	<u>SPEED</u>	<u>REMARKS</u>
En Route Transition									
COREA	263808.96N / 0811252.29W	Y		IF					COREA.JOKRS4
SIMIE	271621.48N / 0814342.85W	Y	FB	TF	324.23	47.02			
FAZES	273919.43N / 0815126.38W	Y	FB	TF	343.33	23.91			
MOANS	275449.97N / 0814454.89W	Y	FB	TF	020.49	16.51			
JOKRS	280202.23N / 0814324.20W	Y	FB	TF	010.55	07.31			
En Route Transition									
CSHEL	270124.32N / 0814440.82W	Y		IF					CSHEL.JOKRS4
SIMIE	271621.48N / 0814342.85W	Y	FB	TF	003.30	14.94			
FAZES	273919.43N / 0815126.38W	Y	FB	TF	343.33	23.91			
MOANS	275449.97N / 0814454.89W	Y	FB	TF	020.49	16.51			
JOKRS	280202.23N / 0814324.20W	Y	FB	TF	010.55	07.31			
En Route Transition									
FAZES	273919.43N / 0815126.38W	Y		IF					FAZES.JOKRS4
MOANS	275449.97N / 0814454.89W	Y	FB	TF	020.49	16.51			
JOKRS	280202.23N / 0814324.20W	Y	FB	TF	010.55	07.31			
En Route Transition									
FERAL	263047.36N / 0814615.74W	Y		IF					FERAL.JOKRS4
CSHEL	270124.32N / 0814440.82W	Y	FB	TF	002.65	30.56			
SIMIE	271621.48N / 0814342.85W	Y	FB	TF	003.30	14.94			
FAZES	273919.43N / 0815126.38W	Y	FB	TF	343.33	23.91			
MOANS	275449.97N / 0814454.89W	Y	FB	TF	020.49	16.51			
JOKRS	280202.23N / 0814324.20W	Y	FB	TF	010.55	07.31			



FEDERAL AVIATION ADMINISTRATION
 FLIGHT STANDARDS SERVICE
 STAR (DATA RECORD)

Arrival Name	Number	STAR Computer Code	Superseded Number	Dated	Effective Date
JOKRS (RNAV)	FOUR	JOKRS.JOKRS4	THREE	05/19/2022	19 MAR 2026

FIX/NAVAID	LAT/LONG	C	FO/FB	LEG TYPE	TC	DIST (NM)	ALTITUDE	SPEED	REMARKS
En Route Transition									
MOANS	275449.97N / 0814454.89W	Y		IF					MOANS.JOKRS4
JOKRS	280202.23N / 0814324.20W	Y	FB	TF	010.55	07.31			
Common Route									
JOKRS	280202.23N / 0814324.20W	Y		IF					JOKRS.JOKRS4
ZALEK	280819.19N / 0813804.94W	Y	FO	TF	036.89	07.84			
KISM,KLEE,KMLB, KORL,KSFB				VM	036.89				
Runway Transition									
JOKRS	280202.23N / 0814324.20W	Y		IF					
TAYYE	281455.62N / 0813218.23W	Y	FB	TF	037.31	16.17	10000B12000	AT 250K	
ARHIP	281921.10N / 0812526.85W	Y	FB	TF	053.88	07.49			
GIRAF	282236.62N / 0812526.90W	Y	FB	TF	359.99	03.25	AT/ABOVE 8000	AT 220K	
DVOLA	283114.27N / 0812526.96W	Y	FO	TF	359.99	08.60	AT 6000	AT 210K	
KMCO:RWY 17L,RWY 17R,RWY 18L,RWY 18R				FM	359.99				
Runway Transition									
JOKRS	280202.23N / 0814324.20W	Y		IF					
LORRA	280457.20N / 0812527.91W	Y	FO	TF	079.55	16.13	AT 7000	AT 210K	
KMCO:RWY 35L,RWY 35R,RWY 36L,RWY 36R				VM	090.00				

