

FEDERAL AVIATION ADMINISTRATION
FLIGHT STANDARDS SERVICE
STANDARD TERMINAL ARRIVAL (STAR)

Bearings, headings, courses, tracks and radials are magnetic. Elevations and altitudes are in feet, MSL. Altitudes are minimum altitudes unless otherwise indicated.
Distances are in nautical miles (NM). Graphic depictions attached.

Arrival Name CSTAL (RNAV)	Number TWO	STAR Computer Code CSTAL.CSTAL2	Superseded Number ONE	Dated 08/12/2021	Effective Date 19 May 2022				
TRANSITION ROUTES:									
This is a corrected copy of the procedure published in NFDD 070. ** See page 5 for details. **									
Transition Name	Transition Computer Codes	From FIX/NAVAID	To FIX/NAVAID	Course	Distance	MEA	MOCA	MAA	Crossing Altitudes / Fixes
DDANY	DDANY.CSTAL2	DDANY	DDANY						
			GREAD	170.08	34.26	15000	1900		
			XPRSO	165.53	28.26	15000	1900		AT/ABOVE FL240
			YEPPA	165.82	22.14	15000	1900		
			RECEK	166.58	09.55	14000	1600		AT/ABOVE 15000
			BJOTA	171.30	06.93	12000	1500		AT/ABOVE 13000
			CSTAL	172.33	08.48	10000	1500		AT/BELOW 16000
DEBRL	DEBRL.CSTAL2	DEBRL	DEBRL						
			BEEIN	166.76	33.64	FL180	1900		
			KAIZR	162.17	24.78	FL180	1900		
			DDANY	162.26	11.00	FL180	1900		
			GREAD	170.08	34.26	15000	1900		
			XPRSO	165.53	28.26	15000	1900		AT/ABOVE FL240
			YEPPA	165.82	22.14	15000	1900		
			RECEK	166.58	09.55	14000	1600		AT/ABOVE 15000
			BJOTA	171.30	06.93	12000	1500		AT/ABOVE 13000
			CSTAL	172.33	08.48	10000	1500		AT/BELOW 16000
GREAD	GREAD.CSTAL2	GREAD	GREAD						
			XPRSO	165.53	28.26	15000	1900		AT/ABOVE FL240
			YEPPA	165.82	22.14	15000	1900		
			RECEK	166.58	09.55	14000	1600		AT/ABOVE 15000
			BJOTA	171.30	06.93	12000	1500		AT/ABOVE 13000
			CSTAL	172.33	08.48	10000	1500		AT/BELOW 16000
XPRSO	XPRSO.CSTAL2	XPRSO	XPRSO						AT/ABOVE FL240
			YEPPA	165.82	22.14	15000	1900		



FEDERAL AVIATION ADMINISTRATION
FLIGHT STANDARDS SERVICE
STANDARD TERMINAL ARRIVAL (STAR)

Bearings, headings, courses, tracks and radials are magnetic. Elevations and altitudes are in feet, MSL. Altitudes are minimum altitudes unless otherwise indicated.
Distances are in nautical miles (NM). Graphic depictions attached.

Arrival Name			Number	STAR Computer Code		Superseded Number			Dated	Effective Date
CSTAL (RNAV)			TWO	CSTAL.CSTAL2		ONE			08/12/2021	19 May 2022
Transition Name	Transition Computer Codes	From FIX/NAVAID	To FIX/NAVAID	Course	Distance	MEA	MOCA	MAA	Crossing Altitudes / Fixes	
			RECEK	166.58	09.55	14000	1600		AT/ABOVE 15000	
			BJOTA	171.30	06.93	12000	1500		AT/ABOVE 13000	
			CSTAL	172.33	08.48	10000	1500		AT/BELOW 16000	

ARRIVAL ROUTE DESCRIPTION:

LANDING KMIA RWY 8L/R: FROM CSTAL ON TRACK 174.19/3.98 TO CROSS YACKO AT OR BELOW 13000, THEN ON TRACK 171.13/4.23 TO CROSS ZYGGY AT OR ABOVE 11000 AND AT 250 KIAS, THEN ON TRACK 171.14/4.48 TO CROSS BNFSH AT OR ABOVE 11000, THEN ON TRACK 196.66/11.30 TO CROSS FENDE AT OR ABOVE 11000, THEN ON TRACK 198.22/9.01 TO GUCCI, THEN ON TRACK 233.06/3.89 TO BLYMY, THEN ON TRACK 273.72/2.00 TO CROSS RMANI AT OR ABOVE 8000, THEN ON TRACK 273.00/5.29 TO CROSS MDONA AT OR ABOVE 6000, THEN ON TRACK 272.96/5.31 TO CROSS TUPAC AT 5000, THEN ON TRACK 272.96. EXPECT RADAR VECTORS TO FINAL APPROACH COURSE.

LANDING KMIA RWY 9: FROM CSTAL ON TRACK 174.19/3.98 TO CROSS YACKO AT OR BELOW 13000, THEN ON TRACK 171.13/4.23 TO CROSS ZYGGY AT OR ABOVE 11000 AND AT 250 KIAS, THEN ON TRACK 171.14/4.48 TO CROSS BNFSH AT OR ABOVE 11000, THEN ON TRACK 196.66/11.30 TO CROSS FENDE AT OR ABOVE 11000, THEN ON TRACK 198.22/9.01 TO GUCCI, THEN ON TRACK 212.62/13.34 TO CROSS PRCHE AT OR ABOVE 8000, THEN ON TRACK 262.09/3.35 TO CROSS DAHLA AT OR ABOVE 6000, THEN ON TRACK 272.03/8.70 TO CROSS BILZZ AT 5000, THEN ON TRACK 272.03. EXPECT RADAR VECTORS TO FINAL APPROACH COURSE.

LANDING KMIA RWY 12: FROM CSTAL ON TRACK 174.19/3.98 TO CROSS YACKO AT OR BELOW 13000, THEN ON TRACK 171.13/4.23 TO CROSS ZYGGY AT OR ABOVE 11000 AND AT 250 KIAS, THEN ON TRACK 171.14/4.48 TO CROSS BNFSH AT OR ABOVE 11000, THEN ON TRACK 196.66/11.30 TO CROSS FENDE AT OR ABOVE 11000, THEN ON TRACK 198.22/9.01 TO GUCCI, THEN ON TRACK 233.06/3.89 TO BLYMY, THEN ON TRACK 273.72/2.00 TO CROSS RMANI AT OR ABOVE 8000, THEN ON TRACK 273.00/5.29 TO CROSS MDONA AT OR ABOVE 6000, THEN ON TRACK 303.32/7.85 TO CROSS KPONE AT 4000, THEN ON TRACK 274.00/3.00 TO CROSS CHUUM AT 4000, THEN ON HEADING 274.00. EXPECT RADAR VECTORS TO FINAL APPROACH COURSE.

LANDING KMIA RWY 26L/R, 27, 30: FROM CSTAL ON TRACK 174.19/3.98 TO CROSS YACKO AT OR BELOW 13000, THEN ON TRACK 171.13/4.23 TO CROSS ZYGGY AT OR ABOVE 11000 AND AT 250 KIAS, THEN ON TRACK 171.14/4.48 TO CROSS BNFSH AT OR ABOVE 11000, THEN ON TRACK 185.03/2.48 TO CROSS OTION AT 11000 AND AT 230 KIAS, THEN ON TRACK 180.88/2.67 TO CROSS BONHD AT OR ABOVE 9000, THEN ON TRACK 180.88/4.86 TO CROSS GDDAY BETWEEN 8000 AND 9000, THEN ON TRACK 180.88/11.50 TO CROSS RHODZ AT 6000 AND AT 210 KIAS. EXPECT ILS OR RNAV RWY 26L/R APPROACH OR RADAR VECTORS TO FINAL APPROACH COURSE.

LANDING 07FA/X51/KHST/KTMB: FROM CSTAL ON TRACK 174.19/3.98 TO CROSS YACKO AT OR BELOW 13000, THEN ON TRACK 171.13/4.23 TO CROSS ZYGGY AT OR ABOVE 11000 AND AT 250 KIAS, THEN ON TRACK 171.14/4.48 TO CROSS BNFSH AT OR ABOVE 11000, THEN ON TRACK 196.66/2.60 TO CROSS KEYZZ AT OR ABOVE 11000, THEN ON TRACK 196.66/8.26 TO CROSS CARMA BETWEEN 9000 AND 10000, THEN ON TRACK 197.27/11.23 TO CROSS YARTO AT 8000, THEN ON HEADING 180.00. EXPECT RADAR VECTORS TO FINAL APPROACH COURSE.

PBN REQUIREMENT NOTES

RNAV 1 - DME/DME/IRU OR GPS

EQUIPMENT REQUIREMENT NOTES

RADAR REQUIRED

PROCEDURAL DATA NOTES:

NOTE: JET AIRCRAFT ONLY, EXCLUDING EA50, E50P, SF50, C510, C525 AIRCRAFT, WHICH SHOULD FILE TARPEN RNAV STAR.

NOTE: LANDING EAST USE RUNWAY 12 TRANSITION, LANDING WEST USE RUNWAY 26R TRANSITION. EXPECT RUNWAY ASSIGNMENT FROM MIA APPROACH PRIOR TO CSTAL.

NOTE: DDANY TRANSITION FOR KMCO, KORL, KSFB, KISM, KLEE DEPARTURES ONLY.

CHART NOTE: DO NOT FILE GREAD OR XPRSO TRANSITION - TO BE ASSIGNED BY ATC.

FIXES AND/OR HOLDING PATTERNS:

CHART HOLDING AT BEEIN: HOLD N, RT, 166.76 INBOUND, 10 NM LEGS.

CHART HOLDING AT CSTAL: HOLD N, LT, 172.33 INBOUND, 10 NM LEGS.

CHART HOLDING AT FRATS: HOLD N, RT, 182.00 INBOUND, 10 NM LEGS.

CHART HOLDING AT STIXX: HOLD N, LT, 183.00 INBOUND, 10 NM LEGS.

QUALITY
47
CHECKED

FEDERAL AVIATION ADMINISTRATION
FLIGHT STANDARDS SERVICE
STANDARD TERMINAL ARRIVAL (STAR)

Bearings, headings, courses, tracks and radials are magnetic. Elevations and altitudes are in feet, MSL. Altitudes are minimum altitudes unless otherwise indicated.
Distances are in nautical miles (NM). Graphic depictions attached.

Arrival Name	Number	STAR Computer Code	Superseded Number	Dated	Effective Date
CSTAL (RNAV)	TWO	CSTAL.CSTAL2	ONE	08/12/2021	19 May 2022

CHART HOLDING AT XPRSO: HOLD N, LT, 165.53 INBOUND, 10 NM LEGS.
CHART HOLDING AT YEPPA: HOLD N, LT, 165.82 INBOUND, 10 NM LEGS.
CHART PIANA, RHODZ, FRATZ, STIXX.

COMMUNICATIONS:

CHART: MIA APP CON
CHART: MIAMI HOMESTEAD GENERAL AVIATION AWOS

AIRPORTS SERVED:

MIAMI, FL (KMIA)
HOMESTEAD, FL (KHST)
MIAMI, FL (KTMB)
HOMESTEAD, FL (X51)
KEY LARGO, FL (07FA)

LOST COMMUNICATIONS PROCEDURE:

REMARKS:

THE ENVIRONMENTAL REVIEW UNDER ORDER 1050.1 (LATEST EDITION) AND THE NOISE SCREENING HAVE BEEN ACCOMPLISHED.

ADDITIONAL FLIGHT DATA:

DME/DME ASSESSMENT: SAT (RNP 2.0)
MAG VAR: KMIA 05W/2000
CHART AT TUPAC TERMINUS: KMIA LDG RWY 8L/R
CHART AT BILZZ TERMINUS: KMIA LDG RWY 9
CHART AT CHUUM TERMINUS: KMIA LDG RWY 12
CHART AT RHODES TERMINUS: KMIA LDG RWY 26L/R, 27, 30
CHART AT YARTO TERMINUS: LDG 07FA/X51/KHST/KTMB

FEDERAL AVIATION ADMINISTRATION
FLIGHT STANDARDS SERVICE
STANDARD TERMINAL ARRIVAL (STAR)

Bearings, headings, courses, tracks and radials are magnetic. Elevations and altitudes are in feet, MSL. Altitudes are minimum altitudes unless otherwise indicated.
Distances are in nautical miles (NM). Graphic depictions attached.

Arrival Name	Number	STAR Computer Code	Superseded Number	Dated	Effective Date
CSTAL (RNAV)	TWO	CSTAL.CSTAL2	ONE	08/12/2021	19 May 2022
<u>FLIGHT INSPECTED BY:</u>					
JAMES HAWLEY		FPO	03/21/2022	Digitally signed by ALLAN WILL	
Name		Organization	Date	Apr 04, 2022 Signature	
<u>DEVELOPED BY:</u>					
VICKI TURNER		DESIGN IMPLEMENTATION MANAGER AJV-22	01/08/2021	Digitally signed by ALLAN WILL	
Name		Organization	Date	Apr 04, 2022 Signature	
<u>APPROVED BY:</u>					
MARLON ROBINSON		AJV-A420		Digitally signed by ALLAN WILL	
Name		Organization	Date	Apr 04, 2022 Signature	

CHANGES:

1. ADDED KAIZR IN BETWEEN BEEIN AND DDANY IN DEBRL TRANSITION ROUTE
2. CHANGED EQUIPMENT NOTE FROM RADAR REQUIRED FOR NON-GPS AIRCRAFT TO RADAR REQUIRED
3. LANDING MIA RWY 8L/R: REMOVED RWY 9, 12; REMOVED LCHON AND ADDED CROSS YACKO AT/BELOW 13000 FOLLOWED BY CROSS ZYGGY AT/ABOVE 11000 AND 250 KIAS; REMOVED TERMINUS FIX KPONE AND ADDED CROSS TUPAC AT 5000; CHANGED VM 273.00 TO FM 272.96.
4. ADDED "LANDING KMIA RWY 9: SAME DATA AS 8L/R UNTIL GUCCI--THEN PRCHE-DAHLA-BILZZ.
5. ADDED "LANDING KMIA RWY 12: SAME DATA AS 8L/R UNTIL MDONA--THEN KPONE-CHUUM.
6. LANDING MIA RWY 26L/R, 27, 30: REMOVED SPEED RESTRICTION AT YACKO; REMOVED IBOGE AND ADDED CROSS ZYGGY AT/ABOVE 11000 AND 230 KIAS, CROSS BNFSH AT/ABOVE 11000; REMOVED TERMINUS FIX VALET AND ADDED CROSS RHODZ AT 6000 AND 210 KIAS.
7. LANDING K07FA/KX51/KHST/KTMB: REMOVED FAPSI, KAINS; AFTER CSTAL ADDED YACKO-ZYGGY-BNFSH-KEYZZ-CARMA; ADDED CROSS YARTO AT 8000 AS TERMINUS; VM HDG CHANGED FROM 200 TO 180.
8. ADDED "NOTE: AIRFRAME TYPES EA50, E50P, C510, C525 FILE TARPEN RNAV STAR"
9. REMOVED "NOTE: MIA APPROACH WILL ISSUE LANDING RUNWAY" FROM PROCEDURAL DATA NOTES
10. REMOVED "NOTE: LANDING ALL SATELLITE AIRPORTS: EXPECT RADAR VECTORS AFTER YARTO" FROM PROCEDURAL DATA NOTES
11. REMOVED "NOTE: MIA LANDING EAST: EXPECT RADAR VECTORS AFTER TO KPONE" FROM PROCEDURAL DATA NOTES
12. REMOVED "NOTE: MIA LANDING WEST: EXPECT RADAR VECTORS PRIOR TO VALET" FROM PROCEDURAL DATA NOTES
13. CHANGED "CHART BASHO, COPRA, FRATS, STIXX, WALIP" TO "CHART PIANA, RHODZ, FRATZ, STIXX" IN FIXES AND/OR HOLDING PATTERNS
14. DELETED KMIA LANDING EAST LOST COMMUNICATIONS PROCEDURE
15. DELETED KMIA LANDING WEST LOST COMMUNICATIONS PROCEDURE
16. ADDED "CHART AT TUPAC TERMINUS: LDG KMIA RWY 8L/R" TO ADDITIONAL FLIGHT DATA
17. ADDED "CHART AT BOLZZ TERMINUS: LDG KMIA RWY 9" TO ADDITIONAL FLIGHT DATA
18. ADDED "CHART AT CHUUM TERMINUS: LDG KMIA RWY 12" TO ADDITIONAL FLIGHT DATA
19. REMOVED "CHART AT KPONE TERMINUS: LDG KMIA RWY 12, 8L/R, 9" FROM ADDITIONAL FLIGHT DATA



FEDERAL AVIATION ADMINISTRATION
FLIGHT STANDARDS SERVICE
STANDARD TERMINAL ARRIVAL (STAR)

Bearings, headings, courses, tracks and radials are magnetic. Elevations and altitudes are in feet, MSL. Altitudes are minimum altitudes unless otherwise indicated.
Distances are in nautical miles (NM). Graphic depictions attached.

Arrival Name	Number	STAR Computer Code	Superseded Number	Dated	Effective Date
CSTAL (RNAV)	TWO	CSTAL.CSTAL2	ONE	08/12/2021	19 May 2022

20. REMOVED "CHART AT VALET TERMINUS: LDG KMIA RWY 26L/R, 27, 30" FROM ADDITIONAL FLIGHT DATA

21. ADDED " NOTE: DDANY TRANSITION FOR KMCO, KORL, KSFB, KISM, KLEE DEPARTURES ONLY" TO PROCEDURAL DATA NOTES

22. LOWERED MEAS FOR SEGMENTS ENDING AT DDANY, GREAD, AND XPRSO FROM FL180 TO 15000 AND MEA FOR SEGMENTS ENDING AT YEPPA FROM 16000 TO 15000

REASONS:

1. ATC REQUEST FOR SEQUENCING AND TRAFFIC FLOW

2-5. ATC REQUEST FOR EFFICIENCY AND MORE PREDICTABLE TRAFFIC FLOW

6. ATC REQUEST TO ALIGN WITH FINAL APPROACH COURSES AND MORE EFFICIENT TRAFFIC FLOW

7. ATC REQUEST TO PROVIDE MORE EFFICIENT TRAFFIC FLOW

8. ATC REQUEST TO PREVENT SLOWER JET TRAFFIC FROM FILING PROCEDURE AND GIVE CLARIFICATION FOR USERS TO FILE

9-12. ATC REQUEST

13. ATC REQUEST; CHANGES TO LOST COMMUNICATIONS PROCEDURES

14-15. ATC REQUEST FOR MORE EFFICIENT ROUTING TO FINAL APPROACH COURSE

16-20. IAW 8260.19I, 4-5-2(H)2

21. ATC CLARIFICATION ON WHO CAN FILE THE APPROACH

22. LOWEST PUBLISHED ALTITUDE BETWEEN FIXES

03/25/22: THIS IS A CORRECTED COPY OF THE FORM APPROVED ON 03/21/22.

1. REMOVED "NOTE: EXPECT "DESCEND VIA" CLEARANCE AND LANDING DIRECTION (EAST OR WEST) BY ARTCC. FOR VERTICAL NAVIGATION PLANNING, LANDING EAST, SELECT RWY 12, LANDING WEST, SELECT RWY 26R." FROM PROCEDURAL DATA NOTES

2. ADDED ": NOTE: LANDING EAST USE RUNWAY 12 TRANSITION, LANDING WEST USE RUNWAY 26R TRANSITION. EXPECT RUNWAY ASSIGNMENT FROM MIA APPROACH PRIOR TO CSTAL." TO PROCEDURAL DATA NOTES

3. REMOVED "NOTE: DESCEND VIA MACH NUMBER UNTIL INTERCEPTING 280 KIAS. MAINTAIN 280 KIAS UNTIL SLOWED BY THE STAR OR ASSIGNED BY ATC" IN PROCEDURAL DATA NTOES

4. CHANGED "NOTE: GREAD AND XPRSO TRANSITIONS, ATC ASSIGNED ONLY" TO "CHART NOTE: DO NOT FILE GREAD OR XPRSO TRANSITION - TO BE ASSIGNED BY ATC" IN PROCEDURAL DATA NOTES

5. REMOVED "OR AS ASSIGNED BY ATC" FROM LANDING KMIA RWY 12 AND LANDING 07FA/X51/KHST/KTMB IN ARRIVAL ROUTE DESCRIPTION

6. CHANGED "REFERENCE MAGNETIC VARIATION = KMIA 05W/2000" TO "MAG VAR: KMIA 05W/2000" IN ADDITIONAL FLIGHT DATA

7. CHANGED "CHART AT TUPAC TERMINUS: LDG KMIA RWY 8L/R" TO "CHART AT TUPAC TERMINUS: KMIA LDG RWY 8L/R" IN ADDITIONAL FLIGHT DATA

8. CHANGED "CHART AT BILZZ TERMINUS: LDG KMIA RWY 9" TO "CHART AT BILZZ TERMINUS: KMIA LDG RWY 9" IN ADDITIONAL FLIGHT DATA

9. CHANGED "CHART AT CHUUM TERMINUS: LDG KMIA RWY 12" TO "CHART AT CHUUM TERMINUS: KMIA LDG RWY 12" IN ADDITIONAL FLIGHT DATA

10. CHANGED "CHART AT RHODES TERMINUS: LDG KMIA RWY 26L/R, 27, 30" TO "CHART AT RHODES TERMINUS: KMIA LDG RWY 26L/R, 27, 30" IN ADDITIONAL FLIGHT DATA

11. DELETED "MEAS AT OR ABOVE FL180 FOR COMM AND DME/DME/IRU SOLUTIONS" FROM REMARKS

12. DELETED AIRPORT NAMES FROM AIRPORTS SERVED LIST

04/08/22. THIS IS A CORRECTED COPY OF THE FORM APPROVED ON 04/04/22.

1. REMOVED "NOTE: JET AIRCRAFT ONLY" AND NOTE: AIRFRAME TYPES EA50, E50P, C510, C525 FILE TARPEN RNAV STAR" FROM PROCEDURAL DATA NOTES

2. ADDED "NOTE: JET AIRCRAFT ONLY, EXCLUDING EA50, E50P, SF50, C510, C525 AIRCRAFT, WHICH SHOULD FILE TARPEN RNAV STAR" TO PROCEDURAL DATA NOTES

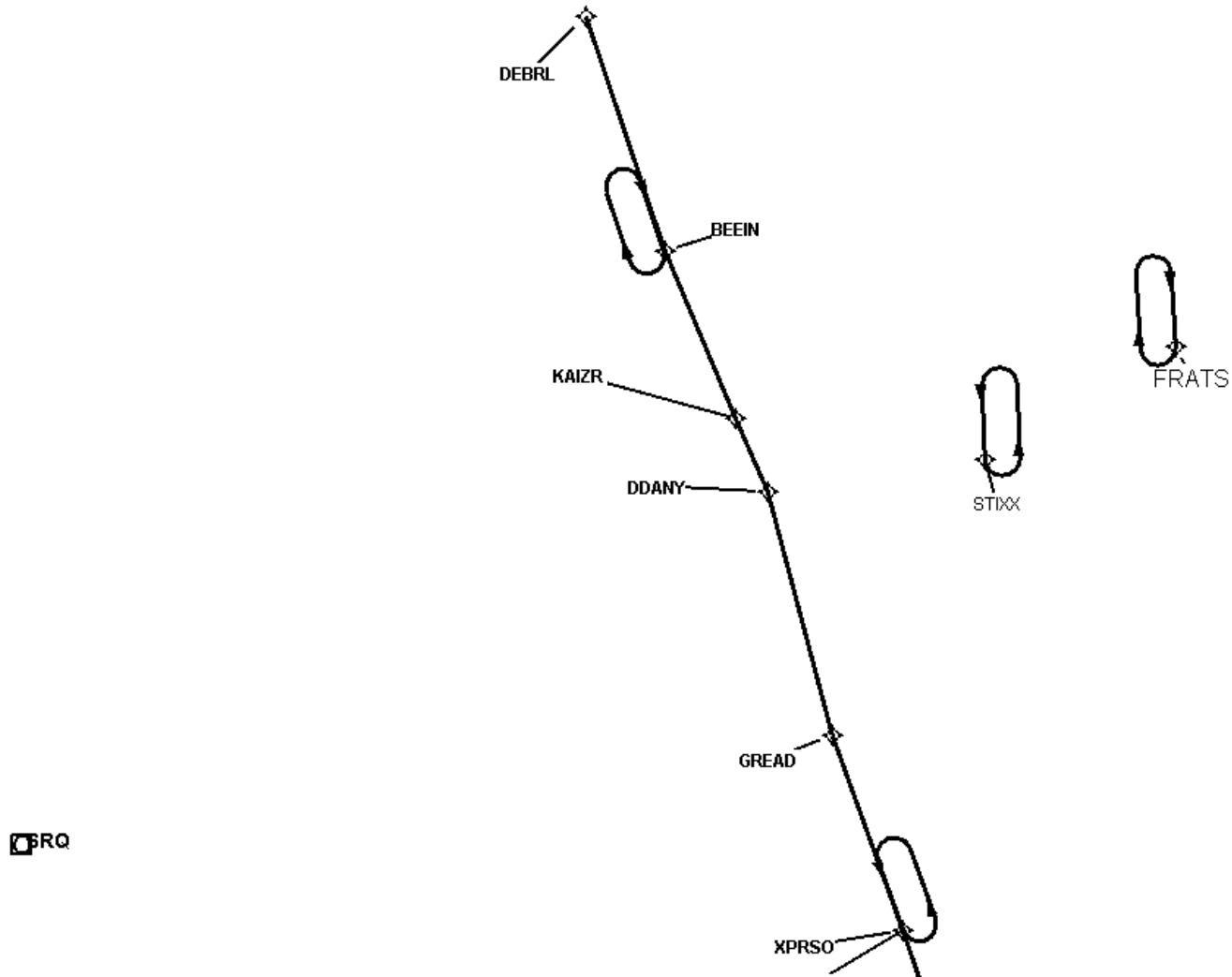
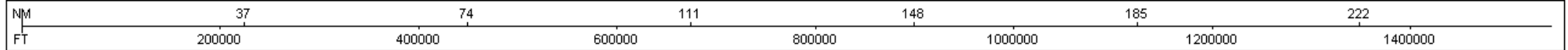


FEDERAL AVIATION ADMINISTRATION
FLIGHT STANDARDS SERVICE
STANDARD TERMINAL ARRIVAL (STAR)

Bearings, headings, courses, tracks and radials are magnetic. Elevations and altitudes are in feet, MSL. Altitudes are minimum altitudes unless otherwise indicated.
Distances are in nautical miles (NM). Graphic depictions attached.

Arrival Name	Number	STAR Computer Code	Superseded Number	Dated	Effective Date
CSTAL (RNAV)	TWO	CSTAL.CSTAL2	ONE	08/12/2021	19 May 2022

Graphic Depiction 1

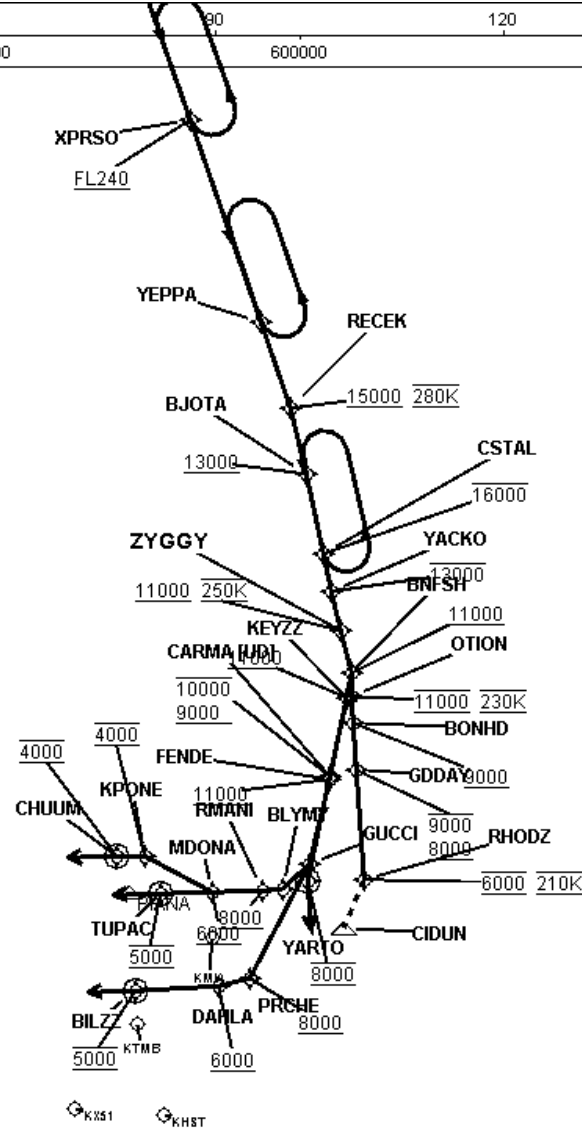
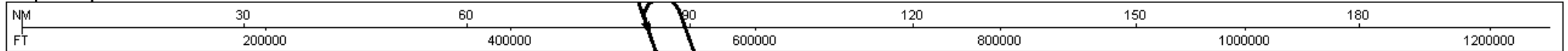


FEDERAL AVIATION ADMINISTRATION
FLIGHT STANDARDS SERVICE
STANDARD TERMINAL ARRIVAL (STAR)

Bearings, headings, courses, tracks and radials are magnetic. Elevations and altitudes are in feet, MSL. Altitudes are minimum altitudes unless otherwise indicated.
Distances are in nautical miles (NM). Graphic depictions attached.

Arrival Name	Number	STAR Computer Code	Superseded Number	Dated	Effective Date
CSTAL (RNAV)	TWO	CSTAL.CSTAL2	ONE	08/12/2021	19 May 2022

Graphic Depiction 2



FEDERAL AVIATION ADMINISTRATION
FLIGHT STANDARDS SERVICE
STAR (DATA RECORD)

Arrival Name CSTAL (RNAV)	Number TWO	STAR Computer Code CSTAL.CSTAL2	Superseded Number ONE	Dated 08/12/2021	Effective Date 19 May 2022
------------------------------	---------------	------------------------------------	--------------------------	---------------------	-------------------------------

FIX/NAVAID	LAT/LONG	C	FO/FB	LEG TYPE	TC	DIST (NM)	ALTITUDE	SPEED	REMARKS
En Route Transition									
DDANY	281241.42N / 0804021.44W	Y		IF					DDANY.CSTAL2
GREAD	273929.15N / 0803025.48W	Y	FB	TF	165.08	34.26			
XPRSO	271245.64N / 0801951.39W	Y	FB	TF	160.53	28.26	AT/ABOVE FL240		
YEPPA	265147.35N / 0801143.51W	Y	FB	TF	160.82	22.14			
RECEK	264242.31N / 0800821.37W	Y	FB	TF	161.58	09.55	AT/ABOVE 15000	AT 280K	
BJOTA	263557.41N / 0800631.59W	Y	FB	TF	166.30	06.93	AT/ABOVE 13000		
CSTAL	262739.82N / 0800427.27W	Y	FB	TF	167.33	08.48	AT/BELOW 16000		

En Route Transition									
DEBRL	291748.73N / 0810802.88W	Y		IF					DEBRL.CSTAL2
BEEIN	284546.17N / 0805604.21W	Y	FB	TF	161.76	33.64			
KAIZR	282251.82N / 0804510.24W	Y	FB	TF	157.17	24.78			
DDANY	281241.42N / 0804021.44W	Y	FB	TF	157.26	11.00			
GREAD	273929.15N / 0803025.48W	Y	FB	TF	165.08	34.26			
XPRSO	271245.64N / 0801951.39W	Y	FB	TF	160.53	28.26	AT/ABOVE FL240		
YEPPA	265147.35N / 0801143.51W	Y	FB	TF	160.82	22.14			
RECEK	264242.31N / 0800821.37W	Y	FB	TF	161.58	09.55	AT/ABOVE 15000	AT 280K	
BJOTA	263557.41N / 0800631.59W	Y	FB	TF	166.30	06.93	AT/ABOVE 13000		
CSTAL	262739.82N / 0800427.27W	Y	FB	TF	167.33	08.48	AT/BELOW 16000		

En Route Transition									
GREAD	273929.15N / 0803025.48W	Y		IF					GREAD.CSTAL2
XPRSO	271245.64N / 0801951.39W	Y	FB	TF	160.53	28.26	AT/ABOVE FL240		
YEPPA	265147.35N / 0801143.51W	Y	FB	TF	160.82	22.14			
RECEK	264242.31N / 0800821.37W	Y	FB	TF	161.58	09.55	AT/ABOVE 15000	AT 280K	
BJOTA	263557.41N / 0800631.59W	Y	FB	TF	166.30	06.93	AT/ABOVE 13000		
CSTAL	262739.82N / 0800427.27W	Y	FB	TF	167.33	08.48	AT/BELOW 16000		

FEDERAL AVIATION ADMINISTRATION
FLIGHT STANDARDS SERVICE
STAR (DATA RECORD)

Arrival Name CSTAL (RNAV)		Number TWO		STAR Computer Code CSTAL.CSTAL2		Superseded Number ONE		Dated 08/12/2021	Effective Date 19 May 2022
FIX/NAVAID	LAT/LONG	C	FO/FB	LEG TYPE	TC	DIST (NM)	ALTITUDE	SPEED	REMARKS
En Route Transition									
XPRSO	271245.64N / 0801951.39W	Y		IF			AT/ABOVE FL240		XPRSO.CSTAL2
YEPPA	265147.35N / 0801143.51W	Y	FB	TF	160.82	22.14			
RECEK	264242.31N / 0800821.37W	Y	FB	TF	161.58	09.55	AT/ABOVE 15000	AT 280K	
BJOTA	263557.41N / 0800631.59W	Y	FB	TF	166.30	06.93	AT/ABOVE 13000		
CSTAL	262739.82N / 0800427.27W	Y	FB	TF	167.33	08.48	AT/BELOW 16000		
Common Route									
CSTAL	262739.82N / 0800427.27W	Y		IF			AT/BELOW 16000		CSTAL.CSTAL2
YACKO	262344.31N / 0800337.34W	Y	FB	TF	169.19	03.98	AT/BELOW 13000		
ZYGGY	261937.40N / 0800229.70W	Y	FB	TF	166.13	04.23	AT/ABOVE 11000	AT 250K	
BNFSH	261515.83N / 0800118.14W	Y	FB	TF	166.14	04.48	AT/ABOVE 11000		
KEYZZ	261242.82N / 0800153.15W	Y	FB	TF	191.66	02.60	AT/ABOVE 11000		
CARMA	260436.00N / 0800344.35W	Y	FB	TF	191.66	08.26	9000B10000		
YARTO	255335.31N / 0800623.17W	Y	FO	TF	192.27	11.23	AT 8000		
07FA,KHST,KTMB, X51				VM	175.00				
Runway Transition									
CSTAL	262739.82N / 0800427.27W	Y		IF			AT/BELOW 16000		
YACKO	262344.31N / 0800337.34W	Y	FB	TF	169.19	03.98	AT/BELOW 13000		
ZYGGY	261937.40N / 0800229.70W	Y	FB	TF	166.13	04.23	AT/ABOVE 11000	AT 250K	
BNFSH	261515.83N / 0800118.14W	Y	FB	TF	166.14	04.48	AT/ABOVE 11000		
FENDE	260409.90N / 0800350.31W	Y	FB	TF	191.66	11.30	AT/ABOVE 11000		
GUCCI	255521.91N / 0800607.46W	Y	FB	TF	193.22	09.01			
BLYMY	255245.48N / 0800919.87W	Y	FB	TF	228.06	03.89			
RMANI	255242.77N / 0801132.89W	Y	FB	TF	268.72	02.00	AT/ABOVE 8000		
MDONA	255231.54N / 0801724.91W	Y	FB	TF	268.00	05.29	AT/ABOVE 6000		

FEDERAL AVIATION ADMINISTRATION
FLIGHT STANDARDS SERVICE
STAR (DATA RECORD)

Arrival Name CSTAL (RNAV)	Number TWO	STAR Computer Code CSTAL.CSTAL2	Superseded Number ONE	Dated 08/12/2021	Effective Date 19 May 2022
------------------------------	---------------	------------------------------------	--------------------------	---------------------	-------------------------------

FIX/NAVAID	LAT/LONG	C	FO/FB	LEG TYPE	TC	DIST (NM)	ALTITUDE	SPEED	REMARKS
TUPAC	255220.04N / 0802317.78W	Y	FO	TF	267.96	05.31	AT 5000		
KMIA:RWY 8L,RWY 8R				FM	267.96				

Runway Transition

CSTAL	262739.82N / 0800427.27W	Y		IF			AT/BELOW 16000		
YACKO	262344.31N / 0800337.34W	Y	FB	TF	169.19	03.98	AT/BELOW 13000		
ZYGGY	261937.40N / 0800229.70W	Y	FB	TF	166.13	04.23	AT/ABOVE 11000	AT 250K	
BNFSH	261515.83N / 0800118.14W	Y	FB	TF	166.14	04.48	AT/ABOVE 11000		
FENDE	260409.90N / 0800350.31W	Y	FB	TF	191.66	11.30	AT/ABOVE 11000		
GUCCI	255521.91N / 0800607.46W	Y	FB	TF	193.22	09.01			
PRCHE	254330.35N / 0801258.32W	Y	FB	TF	207.62	13.34	AT/ABOVE 8000		
DAHLA	254245.22N / 0801635.46W	Y	FB	TF	257.09	03.35	AT/ABOVE 6000		
BILZZ	254217.82N / 0802612.49W	Y	FO	TF	267.03	08.70	AT 5000		
KMIA:RWY 9				FM	267.03				

Runway Transition

CSTAL	262739.82N / 0800427.27W	Y		IF			AT/BELOW 16000		
YACKO	262344.31N / 0800337.34W	Y	FB	TF	169.19	03.98	AT/BELOW 13000		
ZYGGY	261937.40N / 0800229.70W	Y	FB	TF	166.13	04.23	AT/ABOVE 11000	AT 250K	
BNFSH	261515.83N / 0800118.14W	Y	FB	TF	166.14	04.48	AT/ABOVE 11000		
FENDE	260409.90N / 0800350.31W	Y	FB	TF	191.66	11.30	AT/ABOVE 11000		
GUCCI	255521.91N / 0800607.46W	Y	FB	TF	193.22	09.01			
BLYMY	255245.48N / 0800919.87W	Y	FB	TF	228.06	03.89			
RMANI	255242.77N / 0801132.89W	Y	FB	TF	268.72	02.00	AT/ABOVE 8000		
MDONA	255231.54N / 0801724.91W	Y	FB	TF	268.00	05.29	AT/ABOVE 6000		
KPONE	255615.61N / 0802505.11W	Y	FB	TF	298.32	07.85	AT 4000		
CHUUM	255612.42N / 0802824.75W	Y	FO	TF	269.00	03.00	AT 4000		
KMIA:RWY 12				VM	269.00				

FEDERAL AVIATION ADMINISTRATION
FLIGHT STANDARDS SERVICE
STAR (DATA RECORD)

Arrival Name	Number	STAR Computer Code	Superseded Number	Dated	Effective Date
CSTAL (RNAV)	TWO	CSTAL.CSTAL2	ONE	08/12/2021	19 May 2022

FIX/NAVAID	LAT/LONG	C	FO/FB	LEG TYPE	TC	DIST (NM)	ALTITUDE	SPEED	REMARKS
Runway Transition									
CSTAL	262739.82N / 0800427.27W	Y		IF			AT/BELOW 16000		
YACKO	262344.31N / 0800337.34W	Y	FB	TF	169.19	03.98	AT/BELOW 13000		
ZYGGY	261937.40N / 0800229.70W	Y	FB	TF	166.13	04.23	AT/ABOVE 11000	AT 250K	
BNFSH	261515.83N / 0800118.14W	Y	FB	TF	166.14	04.48	AT/ABOVE 11000		
OTION	261246.72N / 0800118.23W	Y	FB	TF	180.03	02.48	AT 11000	AT 230K	
BONHD	261006.29N / 0800105.41W	Y	FB	TF	175.88	02.67	AT/ABOVE 9000		
GDDAY	260514.47N / 0800042.12W	Y	FB	TF	175.88	04.86	8000B9000		
RHODZ	255344.46N / 0795947.18W	Y	FB	TF	175.88	11.50	AT 6000	AT 210K	
KMIA:RWY 26L,RWY 26R,RWY 27,RWY 30									