

FEDERAL AVIATION ADMINISTRATION
 FLIGHT STANDARDS SERVICE
 STANDARD TERMINAL ARRIVAL (STAR)

Bearings, headings, courses, tracks and radials are magnetic. Elevations and altitudes are in feet, MSL. Altitudes are minimum altitudes unless otherwise indicated. Ceilings are in feet above airport elevation. Distances are in nautical miles. Visibilities are in statute miles or feet RVR unless otherwise indicated.

Arrival Name LUBBR (RNAV)	Number FOUR	STAR Computer Code LUBBR.LUBBR4	Superseded Number THREE	Dated 05/19/2022	Effective Date 19 MAR 2026
-------------------------------------	-----------------------	---	-----------------------------------	----------------------------	--------------------------------------

TRANSITION ROUTES:

Transition Name	Transition Computer Codes	From FIX/NAVAID	To FIX/NAVAID	Course	Distance	MEA	MOCA	MAA	Crossing Altitudes / Fixes
KRVUR	KRVUR.LUBBR4	KRVUR	KRVUR						
			WNWUD	139.23	50.00	3000	2700		
			SSPAZ	178.59	34.07	3000	2700		
			BATTN	178.70	25.31	3000	2700		
KYYUU	KYYUU.LUBBR4	KYYUU	LUBBR	183.94	29.49	3000	2700		
			WNWUD	190.61	28.83	3000	2700		
			SSPAZ	178.59	34.07	3000	2700		
			BATTN	178.70	25.31	3000	2700		
SSPAZ	SSPAZ.LUBBR4	SSPAZ	LUBBR	183.94	29.49	3000	2700		
			BATTN	178.70	25.31	3000	2700		
			LUBBR	183.94	29.49	3000	2700		

ARRIVAL ROUTE DESCRIPTION:

SRQ: FROM LUBBR ON TRACK 177.79/11.56 TO ZEBON, THEN ON TRACK 172.23/11.70 TO RUNNE, THEN ON TRACK 177.42/10.71 TO BREKR.

LANDING SRQ RWY 14: FROM BREKR ON TRACK 213.49/23.62 TO WUDDY, THEN ON TRACK 226.28/12.88 TO LYFIE, THEN ON TRACK 273.29/14.59 TO CROSS RUTAE AT OR ABOVE 3000, THEN ON HEADING 230.00. EXPECT RADAR VECTORS TO FINAL APPROACH COURSE.

LANDING SRQ RWY 32: FROM BREKR ON TRACK 213.49/23.62 TO WUDDY, THEN ON TRACK 226.28/12.88 TO LYFIE, THEN ON TRACK 175.30/17.70 TO CROSS MURDO AT OR ABOVE 3000, THEN ON HEADING 228.00. EXPECT RADAR VECTORS TO FINAL APPROACH COURSE.

LANDING FA54: FROM LUBBR ON TRACK 177.79/11.56 TO ZEBON, THEN ON TRACK 172.23/11.70 TO RUNNE, THEN ON TRACK 177.42/10.71 TO BREKR, THEN ON TRACK 213.49/23.62 TO WUDDY, THEN ON TRACK 226.28/12.88 TO LYFIE, THEN ON TRACK 173.39/26.49 TO CROSS ROSTY AT OR ABOVE 3000 AND AT 210 KIAS, THEN ON HEADING 180.00. EXPECT RADAR VECTORS TO FINAL APPROACH COURSE.

LANDING LAL: FROM LUBBR ON TRACK 177.79/11.56 TO ZEBON, THEN ON TRACK 172.23/14.09 TO CROSS ZEPHR AT OR ABOVE 3000, THEN ON TRACK 180.00. EXPECT RADAR VECTORS TO FINAL APPROACH COURSE.

LANDING PGD: FROM LUBBR ON TRACK 177.79/11.56 TO ZEBON, THEN ON TRACK 172.23/11.70 TO RUNNE, THEN ON TRACK 177.42/10.71 TO BREKR, THEN ON TRACK 213.49/23.62 TO WUDDY, THEN ON TRACK 226.28/12.88 TO LYFIE, THEN ON TRACK 173.39/26.49 TO CROSS ROSTY AT OR ABOVE 3000 AND AT 210 KIAS, THEN ON HEADING 150.00. EXPECT RADAR VECTORS TO FINAL APPROACH COURSE.

LANDING VNC: FROM LUBBR ON TRACK 177.79/11.56 TO ZEBON, THEN ON TRACK 172.23/11.70 TO RUNNE, THEN ON TRACK 177.42/10.71 TO BREKR, THEN ON TRACK 213.49/23.62 TO WUDDY, THEN ON TRACK 226.28/12.88 TO LYFIE, THEN ON TRACK 173.39/26.49 TO CROSS ROSTY AT OR ABOVE 3000 AND AT 210 KIAS, THEN ON HEADING 240.00. EXPECT RADAR VECTORS TO FINAL APPROACH COURSE.

PBN REQUIREMENT NOTES:

RNAV 1 - DME/DME/IRU OR GPS

EQUIPMENT REQUIREMENT NOTES:

RADAR REQUIRED



FEDERAL AVIATION ADMINISTRATION
 FLIGHT STANDARDS SERVICE
 STANDARD TERMINAL ARRIVAL (STAR)

Bearings, headings, courses, tracks and radials are magnetic. Elevations and altitudes are in feet, MSL. Altitudes are minimum altitudes unless otherwise indicated.
 Ceilings are in feet above airport elevation. Distances are in nautical miles. Visibilities are in statute miles or feet RVR unless otherwise indicated.

Arrival Name	Number	STAR Computer Code	Superseded Number	Dated	Effective Date
LUBBR (RNAV)	FOUR	LUBBR.LUBBR4	THREE	05/19/2022	19 MAR 2026

PROCEDURAL DATA NOTES:

- NOTE: JET AND TURBOPROP AIRCRAFT ONLY
- NOTE: DO NOT FILE KRVUR AND SSPAZ TRANSITIONS - TO BE ASSIGNED BY ATC.

FIXES AND/OR HOLDING PATTERNS:

CHART HOLDING AT LUBBR: HOLD N, RT, 183.94 INBOUND, 8 NM LEGS.

COMMUNICATIONS:

AIRPORTS SERVED:

AIRPORT ID	CITY	STATE
SRQ	SARASOTA/BRADENTON	FL
FA54	PLACIDA	FL
LAL	LAKELAND	FL
PGD	PUNTA GORDA	FL
VNC	VENICE	FL

LOST COMMUNICATIONS PREFERENCES:

REMARKS:

THE ENVIRONMENTAL REVIEW UNDER ORDER 1050.1 (LATEST EDITION) AND THE NOISE SCREENING HAVE BEEN ACCOMPLISHED.
 2700 FT MOCA VALUES DUE TO 1667 MSL TWR (12-004378) LOCATED DOWNSTREAM IN RWY TRANSITIONS. DO NOT CHART MOCAS; VALUES ARE WITHIN 500 FT OF MEA.

ADDITIONAL FLIGHT DATA:

- DME/DME ASSESSMENT: SAT (RNP 2.0)
- MAG VAR: SRQ 05W/2010
- CHART AT MURDO TERMINUS: SRQ LDG RWY 32
- CHART AT RUTAE TERMINUS: SRQ LDG RWY 14
- CHART AT ROSTY TERMINUS: LDG FA54/VNC/PGD
- CHART AT ZEPHR TERMINUS: LDG LAL



FEDERAL AVIATION ADMINISTRATION
 FLIGHT STANDARDS SERVICE
 STANDARD TERMINAL ARRIVAL (STAR)

Bearings, headings, courses, tracks and radials are magnetic. Elevations and altitudes are in feet, MSL. Altitudes are minimum altitudes unless otherwise indicated. Ceilings are in feet above airport elevation. Distances are in nautical miles. Visibilities are in statute miles or feet RVR unless otherwise indicated.

Arrival Name	Number	STAR Computer Code	Superseded Number	Dated	Effective Date
LUBBR (RNAV)	FOUR	LUBBR.LUBBR4	THREE	05/19/2022	19 MAR 2026

FLIGHT INSPECTED BY:

JEFFREY ECKMAN

ORGANIZATION:

AJF

DATE:

10/24/2025

Flight Inspected Signature:

Digitally signed by

CASIMIR L TABAKA

Oct 24, 2025

Digitally signed by

KWEKU DONKOR

Sep 24, 2025

DEVELOPED BY:

KWEKU DONKOR

AJV-A433

08/06/2025

Developed By Signature:

APPROVED BY:

BEV BORDY

AJV-A430

Approved By Signature:

Digitally signed by

CASIMIR L TABAKA

Oct 24, 2025

CHANGES:

1. MOVED BREKR 1.05 NM EAST TO AVOID PARACHUTE OPERATIONS.
2. MOVED RUNNE 2.08 NM SOUTHEAST TO AVOID PARACHUTE OPERATIONS.
3. MOVED ZEPHR 1.69 NM NORTHEAST TO AVOID PARACHUTE OPERATIONS.
4. ADDED SPEED CONSTRAINT OF 210 KIAS TO ROSTY TERMINUS FIX SERVING PGD, VNC, FA54.
5. CONSOLIDATED CHART NOTE FOR ATC ASSIGNED ONLY TRANSITIONS AT KRVUR AND SSPAZ.
6. INCREASED ALL MOCA VALUES.
7. ADDED REMARK DO NOT CHART MOCA VALUES.
8. REMOVED ARPT K IDENT ON 17.1 FORM.
9. REMOVED OR AS ASSIGNED BY ATC LOCATED IN ARRIVAL DESCRIPTIONS.
10. LAL ARRIVAL VM HEADING (MH) CHANGED FROM 177.35 TO 180.
11. LANDING VNC; INSERTED WP ZEBON AFTER LUBBR.

REASONS:

- 1-4, 11. ATC REQUEST.
5. REDUCED CHART CLUTTER.
6. TWR LOCATED DOWNSTREAM IN COMMON ROUTE.
7. IAW FAAO 8260.19K, PARA 4-5-12(I).
- 8, 9. IAW 8260.19K DOCUMENTATION STANDARDS.
10. VM HEADING RECALCULATION UPDATE.

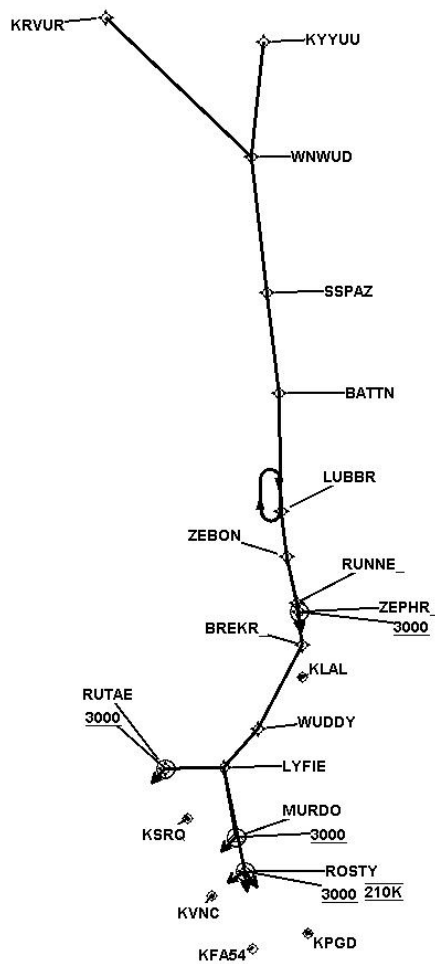


FEDERAL AVIATION ADMINISTRATION
 FLIGHT STANDARDS SERVICE
 STANDARD TERMINAL ARRIVAL (STAR)

Bearings, headings, courses, tracks and radials are magnetic. Elevations and altitudes are in feet, MSL. Altitudes are minimum altitudes unless otherwise indicated.
 Ceilings are in feet above airport elevation. Distances are in nautical miles. Visibilities are in statute miles or feet RVR unless otherwise indicated.

Arrival Name	Number	STAR Computer Code	Superseded Number	Dated	Effective Date
LUBBR (RNAV)	FOUR	LUBBR.LUBBR4	THREE	05/19/2022	19 MAR 2026

Graphic Depiction 1

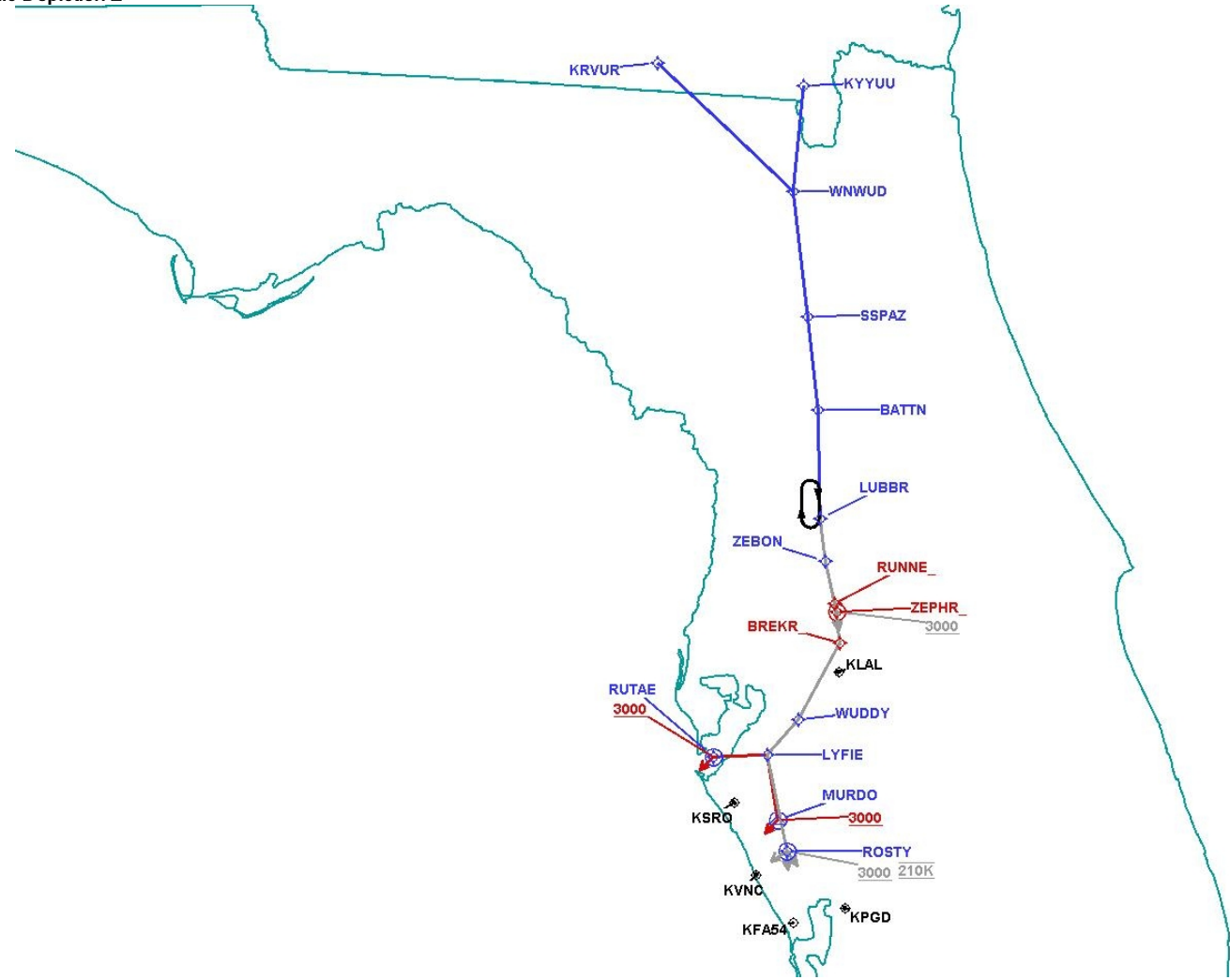


FEDERAL AVIATION ADMINISTRATION
FLIGHT STANDARDS SERVICE
STANDARD TERMINAL ARRIVAL (STAR)

Bearings, headings, courses, tracks and radials are magnetic. Elevations and altitudes are in feet, MSL. Altitudes are minimum altitudes unless otherwise indicated.
Ceilings are in feet above airport elevation. Distances are in nautical miles. Visibilities are in statute miles or feet RVR unless otherwise indicated.

Arrival Name	Number	STAR Computer Code	Superseded Number	Dated	Effective Date
LUBBR (RNAV)	FOUR	LUBBR.LUBBR4	THREE	05/19/2022	19 MAR 2026

Graphic Depiction 2

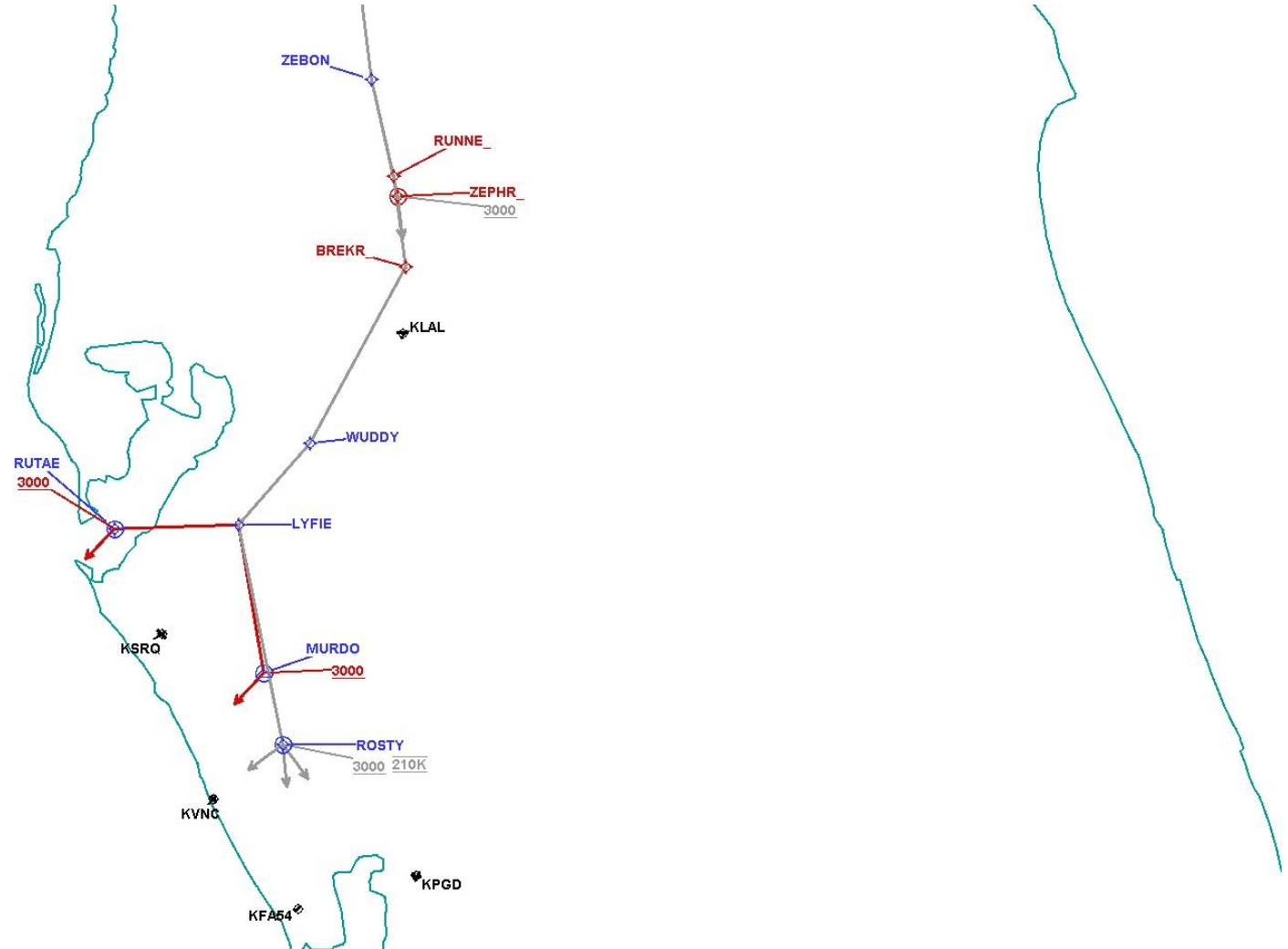


FEDERAL AVIATION ADMINISTRATION
 FLIGHT STANDARDS SERVICE
 STANDARD TERMINAL ARRIVAL (STAR)

Bearings, headings, courses, tracks and radials are magnetic. Elevations and altitudes are in feet, MSL. Altitudes are minimum altitudes unless otherwise indicated.
 Ceilings are in feet above airport elevation. Distances are in nautical miles. Visibilities are in statute miles or feet RVR unless otherwise indicated.

Arrival Name	Number	STAR Computer Code	Superseded Number	Dated	Effective Date
LUBBR (RNAV)	FOUR	LUBBR.LUBBR4	THREE	05/19/2022	19 MAR 2026

Graphic Depiction 3



FEDERAL AVIATION ADMINISTRATION
 FLIGHT STANDARDS SERVICE
 STAR (DATA RECORD)

Arrival Name LUBBR (RNAV)	Number FOUR	STAR Computer Code LUBBR.LUBBR4		Superseded Number THREE	Dated 05/19/2022	Effective Date 19 MAR 2026			
<u>FIX/NAVAID</u>	<u>LAT/LONG</u>	<u>C</u>	<u>FO/FB</u>	<u>LEG TYPE</u>	<u>TC</u>	<u>DIST (NM)</u>	<u>ALTITUDE</u>	<u>SPEED</u>	<u>REMARKS</u>
En Route Transition									
KRVUR	304432.15N / 0825630.39W	Y		IF					KRVUR.LUBBR4
WNWUD	300928.11N / 0821510.74W	Y	FB	TF	134.23	50.00			
SSPAZ	293531.70N / 0821048.79W	Y	FB	TF	173.59	34.07			
BATTN	291018.32N / 0820738.49W	Y	FB	TF	173.70	25.31			
LUBBR	284044.37N / 0820701.41W	Y	FB	TF	178.94	29.49			
En Route Transition									
KYYUU	303813.83N / 0821155.76W	Y		IF					KYYUU.LUBBR4
WNWUD	300928.11N / 0821510.74W	Y	FB	TF	185.61	28.83			
SSPAZ	293531.70N / 0821048.79W	Y	FB	TF	173.59	34.07			
BATTN	291018.32N / 0820738.49W	Y	FB	TF	173.70	25.31			
LUBBR	284044.37N / 0820701.41W	Y	FB	TF	178.94	29.49			
En Route Transition									
SSPAZ	293531.70N / 0821048.79W	Y		IF					SSPAZ.LUBBR4
BATTN	291018.32N / 0820738.49W	Y	FB	TF	173.70	25.31			
LUBBR	284044.37N / 0820701.41W	Y	FB	TF	178.94	29.49			
Common Route									
LUBBR	284044.37N / 0820701.41W	Y		IF					LUBBR.LUBBR4
ZEBON	282914.36N / 0820522.65W	Y	FB	TF	172.79	11.56			
RUNNE	281748.00N / 0820226.93W	Y	FB	TF	167.23	11.70			
BREKR	280709.22N / 0820051.10W	Y	FB	TF	172.42	10.71			
Common Route									
LUBBR	284044.37N / 0820701.41W	Y		IF					LUBBR.LUBBR4
ZEBON	282914.36N / 0820522.65W	Y	FB	TF	172.79	11.56			
RUNNE	281748.00N / 0820226.93W	Y	FB	TF	167.23	11.70			
BREKR	280709.22N / 0820051.10W	Y	FB	TF	172.42	10.71			



FEDERAL AVIATION ADMINISTRATION
 FLIGHT STANDARDS SERVICE
 STAR (DATA RECORD)

Arrival Name LUBBR (RNAV)	Number FOUR	STAR Computer Code LUBBR.LUBBR4	Superseded Number THREE	Dated 05/19/2022	Effective Date 19 MAR 2026
-------------------------------------	-----------------------	---	-----------------------------------	----------------------------	--------------------------------------

<u>FIX/NAVAID</u>	<u>LAT/LONG</u>	<u>C</u>	<u>FO/FB</u>	<u>LEG TYPE</u>	<u>TC</u>	<u>DIST (NM)</u>	<u>ALTITUDE</u>	<u>SPEED</u>	<u>REMARKS</u>
WUDDY	274619.74N / 0821333.09W	Y	FB	TF	208.49	23.62			
LYFIE	273637.18N / 0822306.80W	Y	FB	TF	221.28	12.88			
ROSTY	271036.09N / 0821708.21W	Y	FO	TF	168.39	26.49	AT/ABOVE 3000	AT 210K	
KFA54				VM	175.00				

Common Route

LUBBR	284044.37N / 0820701.41W	Y		IF					LUBBR.LUBBR4
ZEBON	282914.36N / 0820522.65W	Y	FB	TF	172.79	11.56			
ZEPHR	281527.71N / 0820151.09W	Y	FO	TF	167.23	14.09	AT/ABOVE 3000		
KLAL				FM	175.00				

Common Route

LUBBR	284044.37N / 0820701.41W	Y		IF					LUBBR.LUBBR4
ZEBON	282914.36N / 0820522.65W	Y	FB	TF	172.79	11.56			
RUNNE	281748.00N / 0820226.93W	Y	FB	TF	167.23	11.70			
BREKR	280709.22N / 0820051.10W	Y	FB	TF	172.42	10.71			
WUDDY	274619.74N / 0821333.09W	Y	FB	TF	208.49	23.62			
LYFIE	273637.18N / 0822306.80W	Y	FB	TF	221.28	12.88			
ROSTY	271036.09N / 0821708.21W	Y	FO	TF	168.39	26.49	AT/ABOVE 3000	AT 210K	
KPGD				VM	145.00				

Common Route

LUBBR	284044.37N / 0820701.41W	Y		IF					LUBBR.LUBBR4
ZEBON	282914.36N / 0820522.65W	Y	FB	TF	172.79	11.56			
RUNNE	281748.00N / 0820226.93W	Y	FB	TF	167.23	11.70			
BREKR	280709.22N / 0820051.10W	Y	FB	TF	172.42	10.71			
WUDDY	274619.74N / 0821333.09W	Y	FB	TF	208.49	23.62			
LYFIE	273637.18N / 0822306.80W	Y	FB	TF	221.28	12.88			



FEDERAL AVIATION ADMINISTRATION
 FLIGHT STANDARDS SERVICE
 STAR (DATA RECORD)

Arrival Name LUBBR (RNAV)	Number FOUR	STAR Computer Code LUBBR.LUBBR4	Superseded Number THREE	Dated 05/19/2022	Effective Date 19 MAR 2026
-------------------------------------	-----------------------	---	-----------------------------------	----------------------------	--------------------------------------

<u>FIX/NAVAID</u>	<u>LAT/LONG</u>	<u>C</u>	<u>FO/FB</u>	<u>LEG TYPE</u>	<u>TC</u>	<u>DIST (NM)</u>	<u>ALTITUDE</u>	<u>SPEED</u>	<u>REMARKS</u>
ROSTY	271036.09N / 0821708.21W	Y	FO	TF	168.39	26.49	AT/ABOVE 3000	AT 210K	
KVNC				VM	235.00				

Runway Transition

BREKR	280709.22N / 0820051.10W	Y		IF					
WUDDY	274619.74N / 0821333.09W	Y	FB	TF	208.49	23.62			
LYFIE	273637.18N / 0822306.80W	Y	FB	TF	221.28	12.88			
RUTAE	273609.97N / 0823931.89W	Y	FO	TF	268.29	14.59	AT/ABOVE 3000		
KSRQ:RWY 14				VM	225.00				

Runway Transition

BREKR	280709.22N / 0820051.10W	Y		IF					
WUDDY	274619.74N / 0821333.09W	Y	FB	TF	208.49	23.62			
LYFIE	273637.18N / 0822306.80W	Y	FB	TF	221.28	12.88			
MURDO	271907.45N / 0821945.91W	Y	FO	TF	170.30	17.70	AT/ABOVE 3000		
KSRQ:RWY 32				VM	223.00				

