

FEDERAL AVIATION ADMINISTRATION  
 FLIGHT STANDARDS SERVICE  
 STANDARD TERMINAL ARRIVAL (STAR)

Bearings, headings, courses, tracks and radials are magnetic. Elevations and altitudes are in feet, MSL. Altitudes are minimum altitudes unless otherwise indicated. Distances are in nautical miles (NM). Graphic depictions attached.

Arrival Name <b>JOKRS (RNAV)</b>	Number <b>THREE</b>	STAR Computer Code <b>JOKRS.JOKRS3</b>	Superseded Number <b>TWO</b>	Dated <b>12/02/2021</b>	Effective Date <b>19 May 2022</b>
-------------------------------------	------------------------	---	---------------------------------	----------------------------	--------------------------------------

**TRANSITION ROUTES:** This is a corrected copy of the procedure published in NFDD 068. \*\*See page 4 for details. \*\*

Transition Name	Transition Computer Codes	From FIX/NAVAID	To FIX/NAVAID	Course	Distance	MEA	MOCA	MAA	Crossing Altitudes / Fixes
COREA	COREA.JOKRS3	COREA	COREA						
			SIMIE	330.23	47.02	7000	1600		
			FAZES	349.33	23.91	7000	1600		
			MOANS	026.49	16.51	7000	1600		
CSHEL	CSHEL.JOKRS3	CSHEL	JOKRS	016.55	07.31	6000	1600		
			SIMIE	009.30	14.94	7000	1600		
			FAZES	349.33	23.91	7000	1600		
			MOANS	026.49	16.51	7000	1600		
FAZES	FAZES.JOKRS3	FAZES	JOKRS	016.55	07.31	6000	1600		
			MOANS	026.49	16.51	7000	1600		
			JOKRS	016.55	07.31	6000	1600		
			FERAL	016.55	07.31	6000	1600		
FERAL	FERAL.JOKRS3	FERAL	FERAL						
			CSHEL	008.65	30.56	7000	2600		
			SIMIE	009.30	14.94	7000	1600		
			FAZES	349.33	23.91	7000	1600		
			MOANS	026.49	16.51	7000	1600		
MOANS	MOANS.JOKRS3	MOANS	JOKRS	016.55	07.31	6000	1600		
			JOKRS	016.55	07.31	6000	1600		
			JOKRS	016.55	07.31	6000	1600		

**ARRIVAL ROUTE DESCRIPTION:**

LANDING KMCO RWY 17L/R, 18L/R: FROM JOKRS ON TRACK 043.31/16.17 TO CROSS TAYYE BETWEEN 10000 AND 12000 AND AT 250 KIAS, THEN ON TRACK 059.88/7.49 TO ARHIP, THEN ON TRACK 005.99/3.25 TO CROSS GIRAF AT OR ABOVE 8000 AND AT 220 KIAS, THEN ON TRACK 005.99/6.94 TO DVOLA, THEN ON TRACK 006.02/7.96 TO CROSS LYENS AT 5000 AND AT 210 KIAS, THEN ON TRACK 006.02. EXPECT RADAR VECTORS TO FINAL APPROACH COURSE.

LANDING KMCO RWY 35L/R, 36L/R: FROM JOKRS ON TRACK 085.55/16.13 TO CROSS LORRA AT 7000 AND AT 210 KIAS, THEN ON HEADING 096.00 EXPECT RADAR VECTORS TO FINAL APPROACH COURSE.

LANDING KLEE/KSFB/KISM/KMLB/KORL: FROM JOKRS ON TRACK 042.89/7.84 TO ZALEK, THEN ON HEADING 042.89. EXPECT RADAR VECTORS TO FINAL APPROACH COURSE.

**PBN REQUIREMENT NOTES**

RNAV 1 - DME/DME/IRU OR GPS



FEDERAL AVIATION ADMINISTRATION  
FLIGHT STANDARDS SERVICE  
STANDARD TERMINAL ARRIVAL (STAR)

Bearings, headings, courses, tracks and radials are magnetic. Elevations and altitudes are in feet, MSL. Altitudes are minimum altitudes unless otherwise indicated.  
Distances are in nautical miles (NM). Graphic depictions attached.

Arrival Name	Number	STAR Computer Code	Superseded Number	Dated	Effective Date
<b>JOKRS (RNAV)</b>	<b>THREE</b>	<b>JOKRS.JOKRS3</b>	<b>TWO</b>	<b>12/02/2021</b>	<b>19 May 2022</b>

EQUIPMENT REQUIREMENT NOTES

RADAR REQUIRED

PROCEDURAL DATA NOTES:

CHART NOTE: DO NOT FILE COREA, MOANS TRANSITIONS – TO BE ASSIGNED BY ATC.

FIXES AND/OR HOLDING PATTERNS:

CHART HOLDING AT FAZES: HOLD S, LT, 349.33 INBOUND, 10 NM LEGS.

CHART HOLDING AT MOANS: HOLD SW, LT, 026.49 INBOUND, 10 NM LEGS.

CHART HOLDING AT PRICY: HOLD W, RT, 071.64 INBOUND, 10 NM LEGS.

CHART HOLDING AT TOSHE: HOLD S, LT, 340.00 INBOUND, 10 NM LEGS.

CHART PRICY, TOSHE.

COMMUNICATIONS:

CHART: ORLANDO APP CON

AIRPORTS SERVED:

ORLANDO, FL (KMCO)

ORLANDO, FL (KORL)

ORLANDO, FL (KISM)

LEESBURG, FL (KLEE)

MELBOURNE, FL (KMLB)

ORLANDO, FL (KSFB)

LOST COMMUNICATIONS PROCEDURE:REMARKS:

ENVIRONMENTAL REVIEW UNDER ORDER 1050.1 (LATEST EDITION) AND THE NOISE SCREENING HAVE BEEN ACCOMPLISHED.

ADDITIONAL FLIGHT DATA:

DME/DME ASSESSMENT: SAT (RNP 2.0)

MAG VAR: KMCO 06W/2015

CHART AT ZALEK TERMINUS: LDG KLEE/KSFB/KISM/KMLB/KORL

CHART AT LYENS TERMINUS: KMCO LDG RWY 17L/R, 18L/R

CHART AT LORRA TERMINUS: KMCO LDG RWY 35L/R, 36L/R



FEDERAL AVIATION ADMINISTRATION  
 FLIGHT STANDARDS SERVICE  
 STANDARD TERMINAL ARRIVAL (STAR)

Bearings, headings, courses, tracks and radials are magnetic. Elevations and altitudes are in feet, MSL. Altitudes are minimum altitudes unless otherwise indicated. Distances are in nautical miles (NM). Graphic depictions attached.

Arrival Name	Number	STAR Computer Code	Superseded Number	Dated	Effective Date
<b>JOKRS (RNAV)</b>	<b>THREE</b>	<b>JOKRS.JOKRS3</b>	<b>TWO</b>	<b>12/02/2021</b>	<b>19 May 2022</b>
<u>FLIGHT INSPECTED BY:</u>				<i>Digitally signed by</i>	
JOEL P. MURPHY		FIOG	3/15/2022	<b>JASON KRETSCHMER</b>	
Name		Organization	Date	Apr 11, 2022	Signature
<u>DEVELOPED BY:</u>				<i>Digitally signed by</i>	
VICKI TURNER		Design and Implementation Program Manager, AJV-E22	10/21/2021	<b>JASON KRETSCHMER</b>	
Name		Organization	Date	Apr 11, 2022	Signature
<u>APPROVED BY:</u>				<i>Digitally signed by</i>	
MARLON ROBINSON		MANGER, AJV-A420		<b>JASON KRETSCHMER</b>	
Name		Organization	Date	Apr 11, 2022	Signature

CHANGES:

- ADDED: AT 210 KIAS SPEED RESTRICTION AT LYENS.
- ADDED: CSHEL ENROUTE TRANSITION.
- ADDED CSHEL WAYPOINT TO FERAL TRANSITION.
- LOWERED MEA from FI180 at COREA to 7000 at SIMIE.
- LOWERED MEA from FI180 at FERAL to 7000 at SIMIE.
- LOWERED MEA from 14000 at SIMIE to 7000 at FAZES.
- LOWERED MEA from 10000 at FAZES to 7000 at MOANS.
- LOWERED MEA from 7000 at MOANS to 6000 at JOKRS.
- ADDED 220 KIAS at GIRAF.
- REMOVED NOTE: Expect "descend via" clearance and landing direction (north or south) by ARTCC. For vertical navigation planning, landing south, select Rwy 18R, landing north, select Rwy 36L.
- REMOVED NOTE: MCO Landing North: Expect RADAR Vectors prior to LORRA.
- REMOVED NOTE: Landing all Satellite Airports, Expect RADAR Vectors prior to JOKRS.
- REMOVED NOTE: TURBOJET AND TURBOPROP AIRCRAFT ONLY.

REASONS:

- SPEED CONSISTENT WITH OTHER PROCEDURES.
- PROVIDE MORE EFFICIENT ROUTE FOR ALL USERS.
- LOWEST PUBLISHED ALTITUDE BETWEEN FIXES.
- CONSISTENCY IN ARRIVAL SPEEDS.
- CHART NOTE CRITERIA does not allow "EXPECT" NOTES.
- Redundant the procedure gives the same information
- changed who could use the procedure, props now allowed



FEDERAL AVIATION ADMINISTRATION  
 FLIGHT STANDARDS SERVICE  
 STANDARD TERMINAL ARRIVAL (STAR)

Bearings, headings, courses, tracks and radials are magnetic. Elevations and altitudes are in feet, MSL. Altitudes are minimum altitudes unless otherwise indicated.  
 Distances are in nautical miles (NM). Graphic depictions attached.

Arrival Name	Number	STAR Computer Code	Superseded Number	Dated	Effective Date
JOKRS (RNAV)	THREE	JOKRS.JOKRS3	TWO	12/02/2021	19 May 2022

4/11/22: THIS IS A CORRECTED COPY OF THE FORM APPROVED ON 3/18/22.

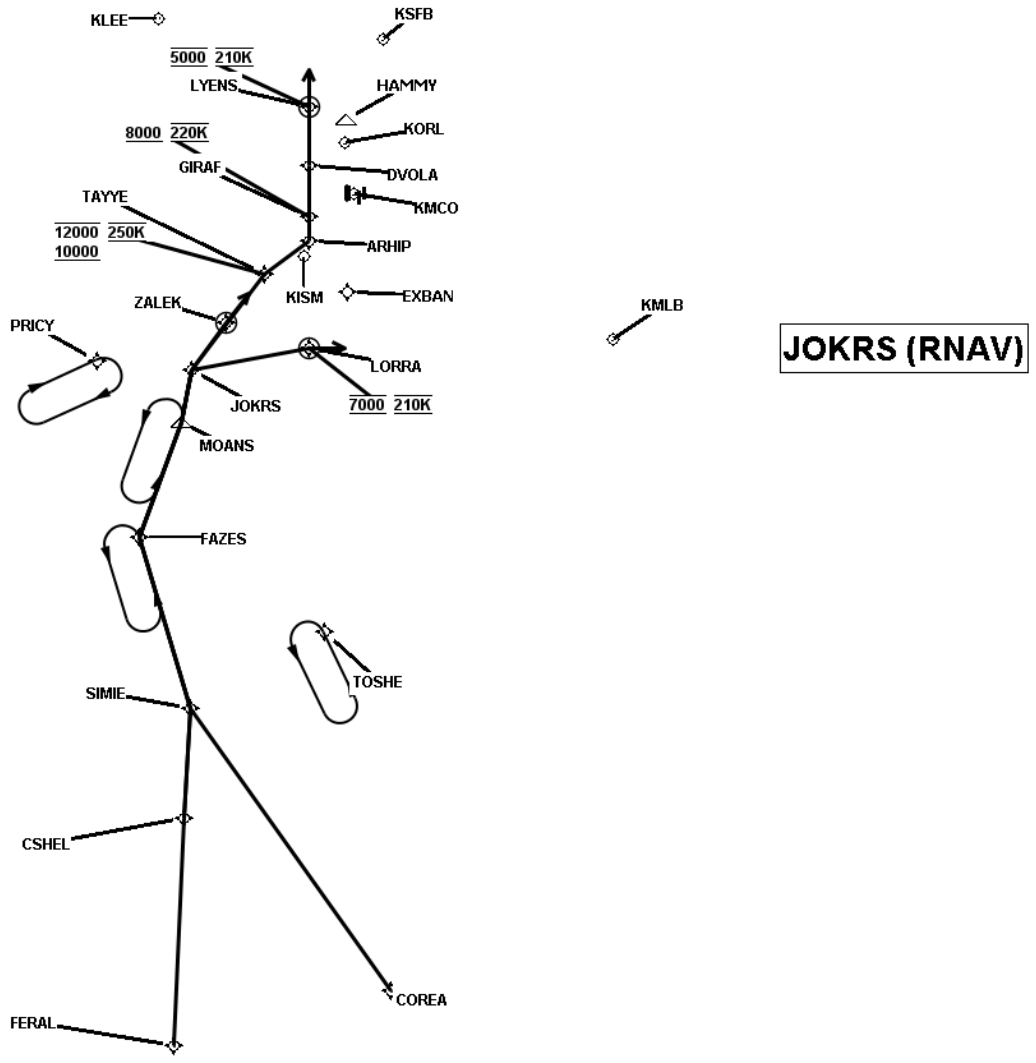
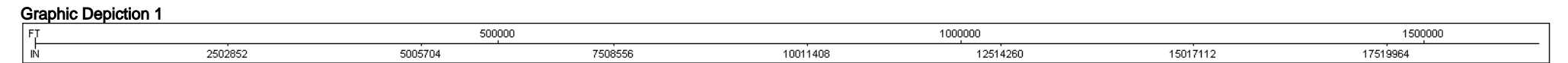
1. DELETED PROCEDURAL DATA NOTE "MCO approach will issue landing runway"
2. CHANGED ADDITIONAL FLIGHT DATA NOTE FROM "REFERENCE MAGNETIC VARIATION = KMCO 06W/2015" to "MAG VAR: KMCO 06W/2015"
3. ADDITIONAL FLIGHT DATA - CHANGED VERBIAGE FROM "LDG KMCO" TO "KMCO LDG"
4. REMOVED ALL LOST COMM PROCEDURES
5. REMOVED "OR AS ASSIGNED BY ATC" FROM ARRIVAL ROUTE DESCRIPTIONS
6. REMOVED HAMMY AND EXBAN FROM FIX AND/OR HOLDING PATTERNS
7. REMOVED AIRPORT NAME FROM AIRPORTS SERVED--AFS REQUEST.
- 8. CHANGED PROCEDURAL DATA NOTE FROM "NOTE: COREA and MOANS Transitions, ATC Assigned only" TO "CHART NOTE: DO NOT FILE COREA, MOANS TRANSITIONS – TO BE ASSIGNED BY ATC"



FEDERAL AVIATION ADMINISTRATION  
FLIGHT STANDARDS SERVICE  
STANDARD TERMINAL ARRIVAL (STAR)

Bearings, headings, courses, tracks and radials are magnetic. Elevations and altitudes are in feet, MSL. Altitudes are minimum altitudes unless otherwise indicated. Distances are in nautical miles (NM). Graphic depictions attached.

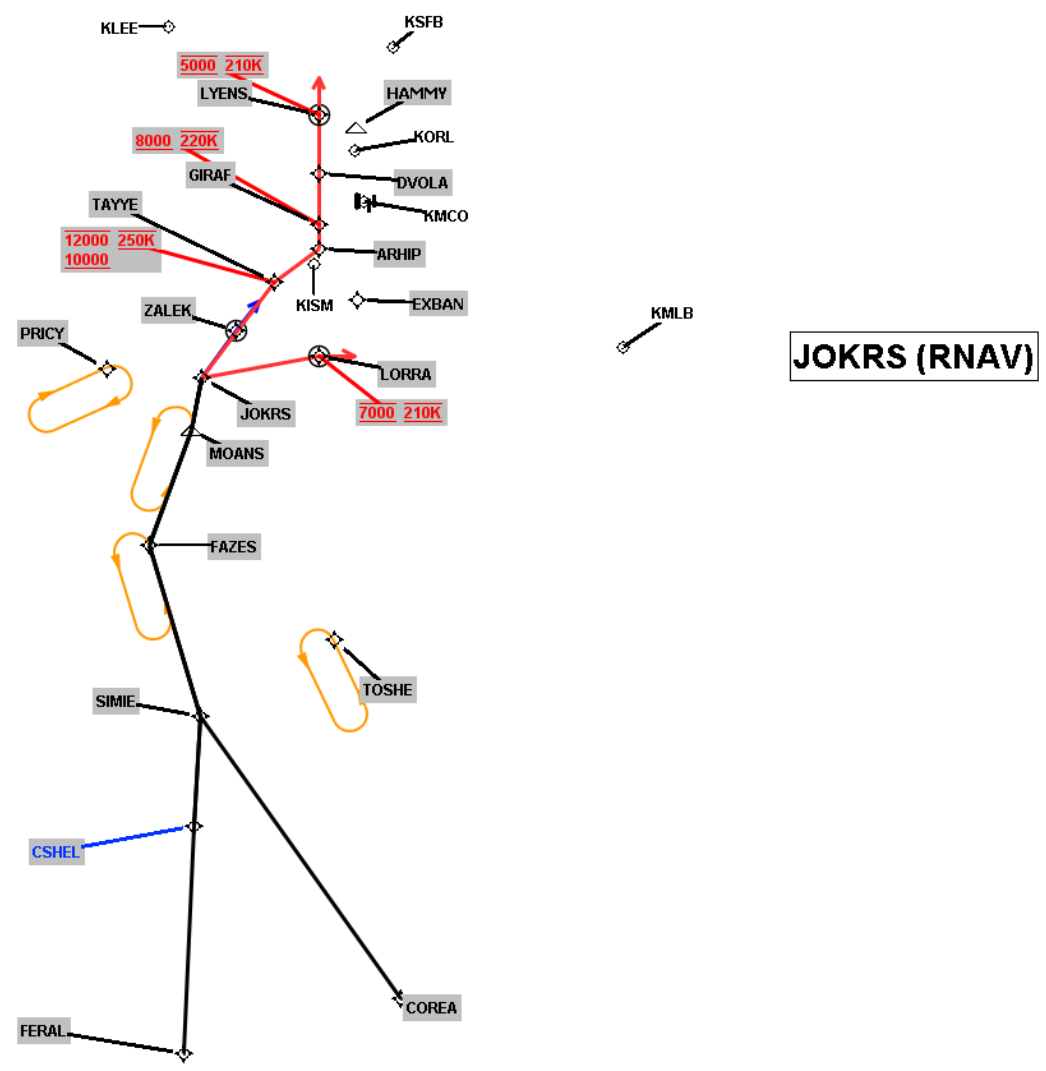
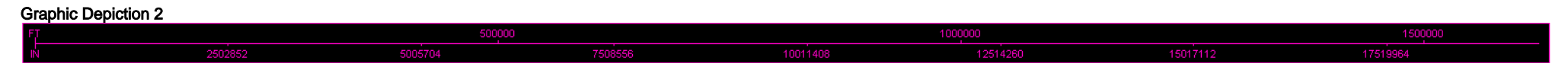
Arrival Name <b>JOKRS (RNAV)</b>	Number <b>THREE</b>	STAR Computer Code <b>JOKRS.JOKRS3</b>	Superseded Number <b>TWO</b>	Dated <b>12/02/2021</b>	Effective Date <b>19 May 2022</b>
-------------------------------------	------------------------	---	---------------------------------	----------------------------	--------------------------------------



FEDERAL AVIATION ADMINISTRATION  
FLIGHT STANDARDS SERVICE  
STANDARD TERMINAL ARRIVAL (STAR)

Bearings, headings, courses, tracks and radials are magnetic. Elevations and altitudes are in feet, MSL. Altitudes are minimum altitudes unless otherwise indicated. Distances are in nautical miles (NM). Graphic depictions attached.

Arrival Name	Number	STAR Computer Code	Superseded Number	Dated	Effective Date
JOKRS (RNAV)	THREE	JOKRS.JOKRS3	TWO	12/02/2021	19 May 2022

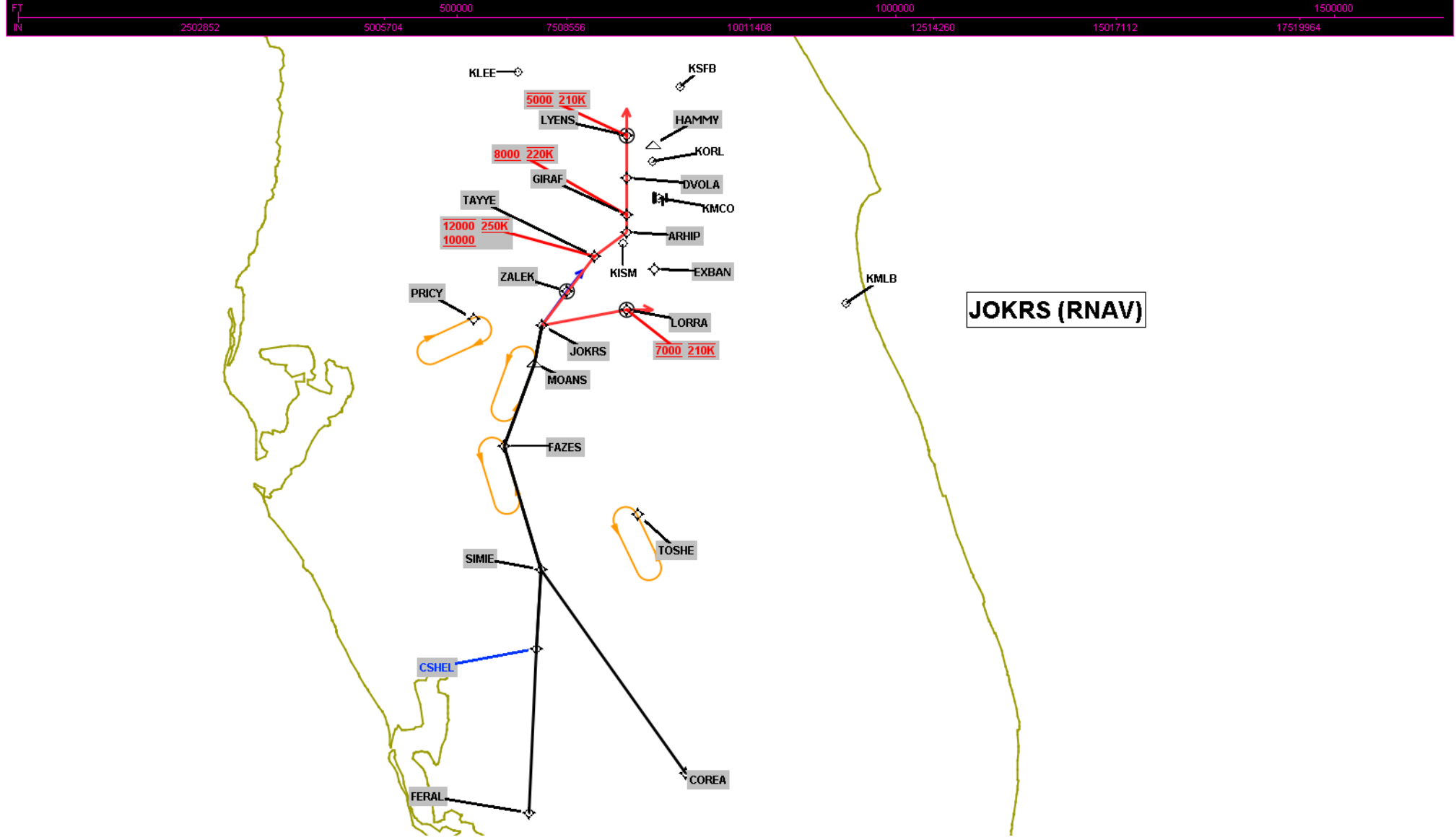


FEDERAL AVIATION ADMINISTRATION  
FLIGHT STANDARDS SERVICE  
STANDARD TERMINAL ARRIVAL (STAR)

Bearings, headings, courses, tracks and radials are magnetic. Elevations and altitudes are in feet, MSL. Altitudes are minimum altitudes unless otherwise indicated. Distances are in nautical miles (NM). Graphic depictions attached.

Arrival Name	Number	STAR Computer Code	Superseded Number	Dated	Effective Date
JOKRS (RNAV)	THREE	JOKRS.JOKRS3	TWO	12/02/2021	19 May 2022

Graphic Depiction 3



FEDERAL AVIATION ADMINISTRATION  
 FLIGHT STANDARDS SERVICE  
 STAR (DATA RECORD)

Arrival Name <b>JOKRS (RNAV)</b>	Number <b>THREE</b>	STAR Computer Code <b>JOKRS.JOKRS3</b>	Superseded Number <b>TWO</b>	Dated <b>12/02/2021</b>	Effective Date <b>19 May 2022</b>
-------------------------------------	------------------------	---	---------------------------------	----------------------------	--------------------------------------

FIX/NAVAID	LAT/LONG	C	FO/FB	LEG TYPE	TC	DIST (NM)	ALTITUDE	SPEED	REMARKS
<b>En Route Transition</b>									
COREA	263808.96N / 0811252.29W	Y		IF					COREA.JOKRS3
SIMIE	271621.48N / 0814342.85W	Y	FB	TF	324.23	47.02			
FAZES	273919.43N / 0815126.38W	Y	FB	TF	343.33	23.91			
MOANS	275449.97N / 0814454.89W	Y	FB	TF	020.49	16.51			
JOKRS	280202.23N / 0814324.20W	Y	FB	TF	010.55	07.31			

<b>En Route Transition</b>									
CSHEL	270124.32N / 0814440.82W	Y		IF					CSHEL.JOKRS3
SIMIE	271621.48N / 0814342.85W	Y	FB	TF	003.30	14.94			
FAZES	273919.43N / 0815126.38W	Y	FB	TF	343.33	23.91			
MOANS	275449.97N / 0814454.89W	Y	FB	TF	020.49	16.51			
JOKRS	280202.23N / 0814324.20W	Y	FB	TF	010.55	07.31			

<b>En Route Transition</b>									
FAZES	273919.43N / 0815126.38W	Y		IF					FAZES.JOKRS3
MOANS	275449.97N / 0814454.89W	Y	FB	TF	020.49	16.51			
JOKRS	280202.23N / 0814324.20W	Y	FB	TF	010.55	07.31			

<b>En Route Transition</b>									
FERAL	263047.36N / 0814615.74W	Y		IF					FERAL.JOKRS3
CSHEL	270124.32N / 0814440.82W	Y	FB	TF	002.65	30.56			
SIMIE	271621.48N / 0814342.85W	Y	FB	TF	003.30	14.94			
FAZES	273919.43N / 0815126.38W	Y	FB	TF	343.33	23.91			
MOANS	275449.97N / 0814454.89W	Y	FB	TF	020.49	16.51			
JOKRS	280202.23N / 0814324.20W	Y	FB	TF	010.55	07.31			



FEDERAL AVIATION ADMINISTRATION  
 FLIGHT STANDARDS SERVICE  
 STAR (DATA RECORD)

Arrival Name <b>JOKRS (RNAV)</b>	Number <b>THREE</b>	STAR Computer Code <b>JOKRS.JOKRS3</b>	Superseded Number <b>TWO</b>	Dated <b>12/02/2021</b>	Effective Date <b>19 May 2022</b>
-------------------------------------	------------------------	---	---------------------------------	----------------------------	--------------------------------------

FIX/NAVAID	LAT/LONG	C	FO/FB	LEG TYPE	TC	DIST (NM)	ALTITUDE	SPEED	REMARKS
<b>En Route Transition</b>									
MOANS	275449.97N / 0814454.89W	Y		IF					MOANS.JOKRS3
JOKRS	280202.23N / 0814324.20W	Y	FB	TF	010.55	07.31			

<b>Common Route</b>									
JOKRS	280202.23N / 0814324.20W	Y		IF					JOKRS.JOKRS3
ZALEK	280819.19N / 0813804.94W	Y	FO	TF	036.89	07.84			
KISM,KLEE,KMLB, KORL,KSFB				VM	036.89				

<b>Runway Transition</b>									
JOKRS	280202.23N / 0814324.20W	Y		IF					
TAYYE	281455.62N / 0813218.23W	Y	FB	TF	037.31	16.17	10000B12000	AT 250K	
ARHIP	281921.10N / 0812526.85W	Y	FB	TF	053.88	07.49			
GIRAF	282236.62N / 0812526.90W	Y	FB	TF	359.99	03.25	AT/ABOVE 8000	AT 220K	
DVOLA	282933.86N / 0812527.00W	Y	FB	TF	359.99	06.94			
LYENS	283732.43N / 0812526.85W	Y	FO	TF	000.02	07.96	AT 5000	AT 210K	
KMCO:RWY 17L,RWY 17R,RWY 18L,RWY 18R				FM	000.02				

<b>Runway Transition</b>									
JOKRS	280202.23N / 0814324.20W	Y		IF					
LORRA	280457.20N / 0812527.91W	Y	FO	TF	079.55	16.13	AT 7000	AT 210K	
KMCO:RWY 35L,RWY 35R,RWY 36L,RWY 36R				VM	090.00				

