

FEDERAL AVIATION ADMINISTRATION
FLIGHT STANDARDS SERVICE
STANDARD TERMINAL ARRIVAL (STAR)

Bearings, headings, courses, tracks and radials are magnetic. Elevations and altitudes are in feet, MSL. Altitudes are minimum altitudes unless otherwise indicated.
Ceilings are in feet above airport elevation. Distances are in nautical miles. Visibilities are in statute miles or feet RVR unless otherwise indicated.

Arrival Name TYNEE (RNAV)	Number THREE	STAR Computer Code TYNEE.TYNEE3	Superseded Number TWO	Dated 09/13/2018	Effective Date 31 Oct 2024				
TRANSITION ROUTES:									
This is a corrected copy of the procedure published in NFDD 175. ** See page 4 for details. **									
Transition Name	Transition Computer Codes	From FIX/NAVAID	To FIX/NAVAID	Course	Distance	MEA	MOCA	MAA	Crossing Altitudes / Fixes
DOWRY	DOWRY.TYNEE3	DOWRY	DOWRY						
			CIGAR	105.08	20.74	FL180	1500		
			SMOGS	105.30	77.66	FL180	1500		
			BAGGS	105.78	28.35	15000	1500		
			TYNEE	127.90	36.02	11000	1400		
FRZBE	FRZBE.TYNEE3	FRZBE	FRZBE						
			JOSFF	149.14	18.00	15000	1400		
			JEVES	148.54	09.19	13000	1400		
			TYNEE	148.59	07.63	11000	1400		
OGGER	OGGER.TYNEE3	OGGER	OGGER						
			FRZBE	162.16	51.87	FL180	1400		
			JOSFF	149.14	18.00	15000	1400		
			JEVES	148.54	09.19	13000	1400		
			TYNEE	148.59	07.63	11000	1400		
PLYER	PLYER.TYNEE3	PLYER	PLYER						
			EGAME	166.15	24.10	FL180	1400		
			OGGER	166.07	30.54	FL180	1400		
			FRZBE	162.16	51.87	FL180	1400		
			JOSFF	149.14	18.00	15000	1400		
			JEVES	148.54	09.19	13000	1400		
			TYNEE	148.59	07.63	11000	1400		
SMOGS	SMOGS.TYNEE3	SMOGS	SMOGS						
			BAGGS	105.78	28.35	15000	1500		
			TYNEE	127.90	36.02	11000	1400		

ARRIVAL ROUTE DESCRIPTION:

LANDING KRSW RWY 6: FROM TYNEE ON TRACK 148.62/20.73 TO SAANN, THEN ON TRACK 148.62. EXPECT RADAR VECTORS TO FINAL APPROACH COURSE.

LANDING KRSW RWY 24: FROM TYNEE ON TRACK 148.62/26.18 TO PASTR, THEN ON TRACK 128.84/5.35 TO LLMER, THEN ON TRACK 085.76/6.73 TO SPNKE, THEN ON TRACK 058.11/6.44 TO CROSS COOPR AT OR ABOVE 4000, THEN ON TRACK 058.11. EXPECT RADAR VECTORS TO FINAL APPROACH COURSE.

LANDING KFMY: FROM TYNEE ON TRACK 148.65/9.24 TO BANYN, THEN ON TRACK 148.65. EXPECT RADAR VECTORS TO FINAL APPROACH COURSE.

FEDERAL AVIATION ADMINISTRATION
FLIGHT STANDARDS SERVICE
STANDARD TERMINAL ARRIVAL (STAR)

Bearings, headings, courses, tracks and radials are magnetic. Elevations and altitudes are in feet, MSL. Altitudes are minimum altitudes unless otherwise indicated.
Ceilings are in feet above airport elevation. Distances are in nautical miles. Visibilities are in statute miles or feet RVR unless otherwise indicated.

Arrival Name	Number	STAR Computer Code	Superseded Number	Dated	Effective Date
TYNEE (RNAV)	THREE	TYNEE.TYNEE3	TWO	09/13/2018	31 Oct 2024

PBN REQUIREMENT NOTES:

RNAV 1 - DME/DME/IRU OR GPS
DOWRY TRANSITION - GPS ONLY.

EQUIPMENT REQUIREMENT NOTES:

RADAR REQUIRED

PROCEDURAL DATA NOTES:

NOTE: JET AND TURBOPROP AIRCRAFT ONLY
NOTE: DO NOT FILE FRZBE, OGGER, SMOGS TRANSITIONS - TO BE ASSIGNED BY ATC.

FIXES AND/OR HOLDING PATTERNS:

CHART HOLDING AT BAGGS: HOLD NW, RT, 127.90 INBOUND, 11 NM LEGS.
CHART HOLDING AT EGAME: HOLD N, LT, 166.07 INBOUND, 11 NM LEGS.
CHART HOLDING AT FRZBE: HOLD NW, LT, 149.14 INBOUND, 11 NM LEGS.
CHART HOLDING AT JOSFF: HOLD NW, RT, 148.54 INBOUND, 10 NM LEGS.
CHART HOLDING AT OGGER: HOLD N, RT, 162.16 INBOUND, 11 NM LEGS.
CHART HOLDING AT SMOGS: HOLD W, RT, 105.30 INBOUND, 11 NM LEGS.
CHART HOLDING AT TYNEE: HOLD NW, LT, 148.62 INBOUND, 7 NM LEGS.
CHART: OBELL, NABAC STAND-ALONE WAYPOINTS.

COMMUNICATIONS:

CHART FORT MYERS APP CONTROL

AIRPORTS SERVED:

<u>AIRPORT ID</u>	<u>CITY</u>	<u>STATE</u>
KRSW	FORT MYERS	FL
KFMY	FORT MYERS	FL

LOST COMMUNICATIONS PREFERENCES:

KRSW LANDING RWY 6: AFTER SAANN, CONTINUE TO OBELL, THEN CONDUCT RWY 6 APPROACH.
KRSW LANDING RWY 24: AFTER COOPR, CONTINUE TO NABAC, THEN CONDUCT RWY 24 APPROACH.

REMARKS:

ASSUMED 295 FT SHIP HEIGHT FOR OBSTS OVER WATER.
MEA ALTITUDES ARE THE RESULT OF A COMBINATION OF FACTORS TO INCLUDE: LACK OF AVAILABLE NAVAIDS FOR DME/DME ANALYSIS OVER THE ATLANTIC; AVOID CRITICAL DME;
ENVIRONMENTAL IMPACT OF NOISE ANALYSIS.

FEDERAL AVIATION ADMINISTRATION
FLIGHT STANDARDS SERVICE
STANDARD TERMINAL ARRIVAL (STAR)

Bearings, headings, courses, tracks and radials are magnetic. Elevations and altitudes are in feet, MSL. Altitudes are minimum altitudes unless otherwise indicated.
Ceilings are in feet above airport elevation. Distances are in nautical miles. Visibilities are in statute miles or feet RVR unless otherwise indicated.

Arrival Name	Number	STAR Computer Code	Superseded Number	Dated	Effective Date
TYNEE (RNAV)	THREE	TYNEE.TYNEE3	TWO	09/13/2018	31 Oct 2024

ADDITIONAL FLIGHT DATA:

DME/DME ASSESSMENT: SAT (RNP 2.0)
MAG VAR: KRSW 04W/2000
CHART AT COOPR TERMINUS: KRSW LDG RWY 24.
CHART AT SAANN TERMINUS: KRSW LDG RWY 06.
CHART AT BANYN TERMINUS: LDG KFMY.

FLIGHT INSPECTED BY:

ERIC L GEYER

ORGANIZATION:

FPO

DATE:

05/28/2024

Flight Inspected Signature:

*Digitally signed by***CASIMIR L TABAKA**

Jun 04, 2024

DEVELOPED BY:

CASIMIR TABAKA (SILVIA YOUNG)

AJV-A432

01/04/2024

Developed By Signature:

*Digitally signed by***CASIMIR L TABAKA**

Mar 21, 2024

APPROVED BY:

CASIMIR TABAKA

AJV-A432

Approved By Signature:

*Digitally signed by***CASIMIR L TABAKA**

Mar 21, 2024

CHANGES:

1. ADDED KFMY TRANSITION WITH NEW TERMINUS WAYPOINT BANYN.
2. AMENDED RWY 6 TRANSITION TO START AT TYNEE AND REMOVE PASTR AND LENPE WAYPOINT AND TERMINATE AT NEW WAYPOINT SAANN WITH FM LEG AND REMOVED WORDING "OR AS ASSIGNED BY ATC."
3. AMENDED RWY 24 TRANSITION TO START AT TYNEE AND TERMINATE AT COOPR WAYPOINT WITH TERMINUS ALTITUDE OF AT/ABOVE 4000.
4. AMENDED LOST COMM PROCEDURES FOR RWY 6 FROM "KRSW LANDING RWY 6: TRACK TO LENPE, INTERCEPT APPROACH" TO READ KRSW LANDING RWY 6: AFTER SAANN, CONTINUE TO OBELL, THEN CONDUCT RWY 6 APPROACH."
5. REMOVED ALL REFERENCES TO EXPECT ALTITUDES AT OGGER, TYNEE, LLMER, AND COOPR.
6. REMOVED CHART NOTE: KRSW LANDING RWY 6: EXPECT TO INTERCEPT APPROACH AT LENPE.
7. REMOVED ALL CHART NOTES REFERENCING CRITICAL DMEs FOR FRZBE, CODGR, AND BAGGS TRANSITIONS.
8. REMOVED OR AS ASSIGNED BY ATC AFTER COOPR ON RWY 24 TRANSITION .
9. ADDED BAGGS HOLDING PATTERN - HOLD NW, RT, 127.90 INBOUND, 11 NM LEGS.
10. AMENDED BAGGS EN ROUTE TRANSITION TO START AT NEW WAYPOINT SMOGS WITH NEW HOLDING PATTERN - HOLD W, RT, 105.30 INBOUND, 11 NM LEGS AT SMOGS.
11. DELETED CODGR EN ROUTE TRANSITION AND HOLDING PATTERN FROM STAR.
12. ADDED DOWRY EN ROUTE TRANSITION FROM NEW WAYPOINT DOWRY TO CIGAR TO SMOGS TO BAGGS TO TYNEE.
13. ADDED CHART NOTE: DO NOT FILE SMOGS TRANSITION - TO BE ASSIGNED BY ATC.
14. ADDED NEW STAND-ALONE WAYPOINT OBELL.
15. CHANGED CHART NOTE FROM "NOTE: TURBOJET AND TURBOPROP AIRCRAFT ONLY" TO READ "NOTE: JET AND TURBOPROP AIRCRAFT ONLY."
16. AMENDED RWY 24 LOST COMM PROCEDURES FROM "KRSW LANDING RWY 24: TRACK TO COOPR, THEN PROCEED DIRECT NABAC, TURN LEFT TO INTERCEPT RWY 24 APPROACH" TO READ "KRSW LANDING RWY 24: AFTER COOPR, CONTINUE TO NABAC, THEN CONDUCT RWY 24 APPROACH."
17. ADDED NOTE: DOWRY TRANSITION - GPS ONLY.
18. ADDED OGGER TRANSITION AND IS ATC ASSIGNED ONLY.
19. REMOVED FIX HODAR.

FEDERAL AVIATION ADMINISTRATION
FLIGHT STANDARDS SERVICE
STANDARD TERMINAL ARRIVAL (STAR)

Bearings, headings, courses, tracks and radials are magnetic. Elevations and altitudes are in feet, MSL. Altitudes are minimum altitudes unless otherwise indicated.
Ceilings are in feet above airport elevation. Distances are in nautical miles. Visibilities are in statute miles or feet RVR unless otherwise indicated.

Arrival Name	Number	STAR Computer Code	Superseded Number	Dated	Effective Date
TYNEE (RNAV)	THREE	TYNEE.TYNEE3	TWO	09/13/2018	31 Oct 2024

20. UPDATED AND PUBLISHED MOCA DATA.
21. REMOVED MEA VALUES FROM ARRIVAL DESCRIPTION.
22. REMOVED AIRPORT NAMES FROM AIRPORTS SERVED.
23. ADDED TERMINUS INFO TO ADDITIONAL FLIGHT DATA.
24. ADDED "ASSUMED 295 FT SHIP HEIGHT FOR OBSTS OVER WATER".
25. ADDED "MEA ALTITUDES ARE THE RESULT OF A COMBINATION OF FACTORS TO INCLUDE: LACK OF AVAILABLE NAVAIDS FOR DME/DME ANALYSIS OVER THE ATLANTIC; AVOID CRITICAL DME; ENVIRONMENTAL IMPACT OF NOISE ANALYSIS."

REASONS:

1. PER DESIGN CRITERIA, PREVIOUS TRANSITION HAD CONFLICTING TURN TYPES AT TYNEE.
- 2-4. PER ATC REQUEST.
5. PER 8260.19I, PARA 4-5-2E.
6. NEEDED FOR REMOVAL OF LENPE FROM PROCEDURE AND RWY 6 APPROACH.
7. SUITABLE DME/DME RESOLUTION EXISTS AND ELIMINATES CRITICAL NAVAIDS.
8. PER CURRENT CHARTING CRITERIA
- 9-11. PER ATC REQUEST FOR MORE EFFICIENT FLOW OF TRAFFIC.
12. PER ATC REQUEST, DME/DME RESOLUTION IS NOT SUITABLE WEST OF SMOGS.
13. PER ATC REQUEST.
14. FACILITATE LOST COMM PROCEDURES FOR RWY 6.
15. IAW 8260.19I, PARA 4-5-2(F).
16. PER ATC REQUEST.
17. INSUFFICIENT DME/DME COVERAGE EXISTS FROM DOWRY TO SMOGS.
- 18-19. PER ATC REQUEST.
20. IAW 8260.19I, PARA 4-5-12b(8).
21. IAW 8260.19I, PARA 4-5-12.
22. PER CURRENT CRITERIA STANDARDS.
23. IAW 8260.19I, PARA 4-5-2H(2).
24. PER IFP CHECKLIST.
25. REMARKS AS PER 8260.3E, 2-2-7D(4) REQUIREMENTS.

05/22/2024: THIS IS AN UPDATED COPY OF THE FORM DEVELOPED ON 01/04/2024.

1. DOWRY TRANSITION: CHANGED CIGAR, SMOGS AND BAGGS MOCAS FROM 1400 TO 1500.

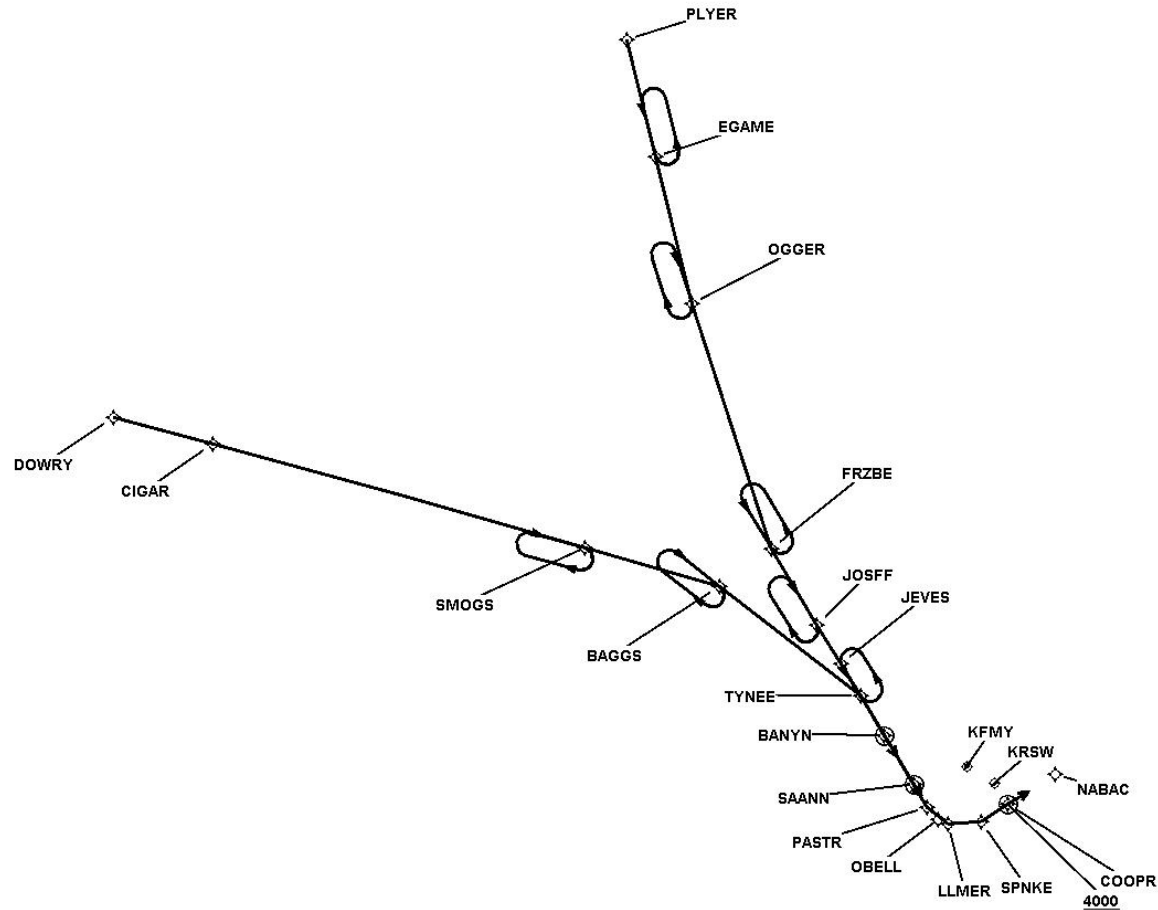
09/25/2024: THIS IS A CORRECTED COPY OF THE FORM APPROVED ON 03/21/2024.

SMOGS TRANSITION: BAGGS MOCA CHANGED FROM 1400 TO 1500.

FEDERAL AVIATION ADMINISTRATION
FLIGHT STANDARDS SERVICE
STANDARD TERMINAL ARRIVAL (STAR)

Bearings, headings, courses, tracks and radials are magnetic. Elevations and altitudes are in feet, MSL. Altitudes are minimum altitudes unless otherwise indicated.
Ceilings are in feet above airport elevation. Distances are in nautical miles. Visibilities are in statute miles or feet RVR unless otherwise indicated.

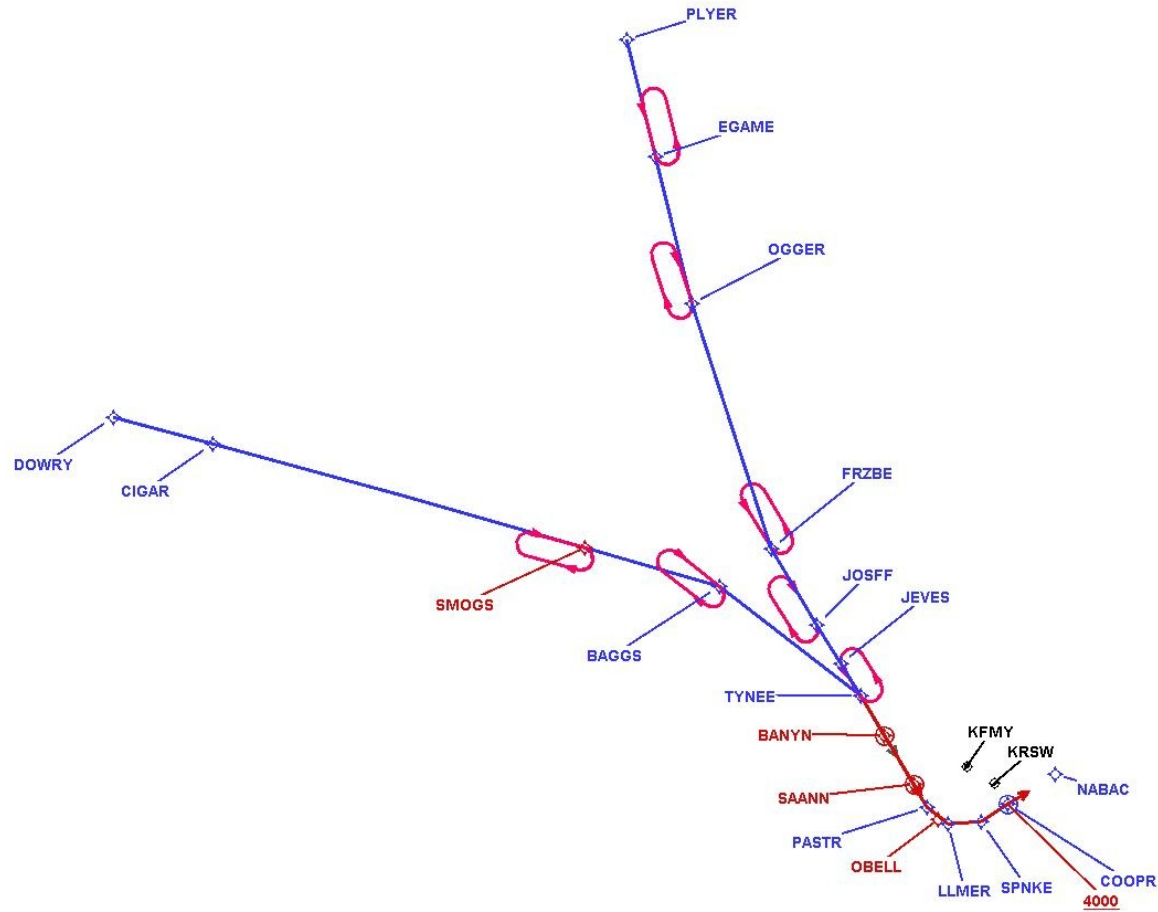
Arrival Name	Number	STAR Computer Code	Superseded Number	Dated	Effective Date
TYNEE (RNAV)	THREE	TYNEE.TYNEE3	TWO	09/13/2018	31 Oct 2024
Graphic Depiction 1					



FEDERAL AVIATION ADMINISTRATION
FLIGHT STANDARDS SERVICE
STANDARD TERMINAL ARRIVAL (STAR)

Bearings, headings, courses, tracks and radials are magnetic. Elevations and altitudes are in feet, MSL. Altitudes are minimum altitudes unless otherwise indicated.
Ceilings are in feet above airport elevation. Distances are in nautical miles. Visibilities are in statute miles or feet RVR unless otherwise indicated.

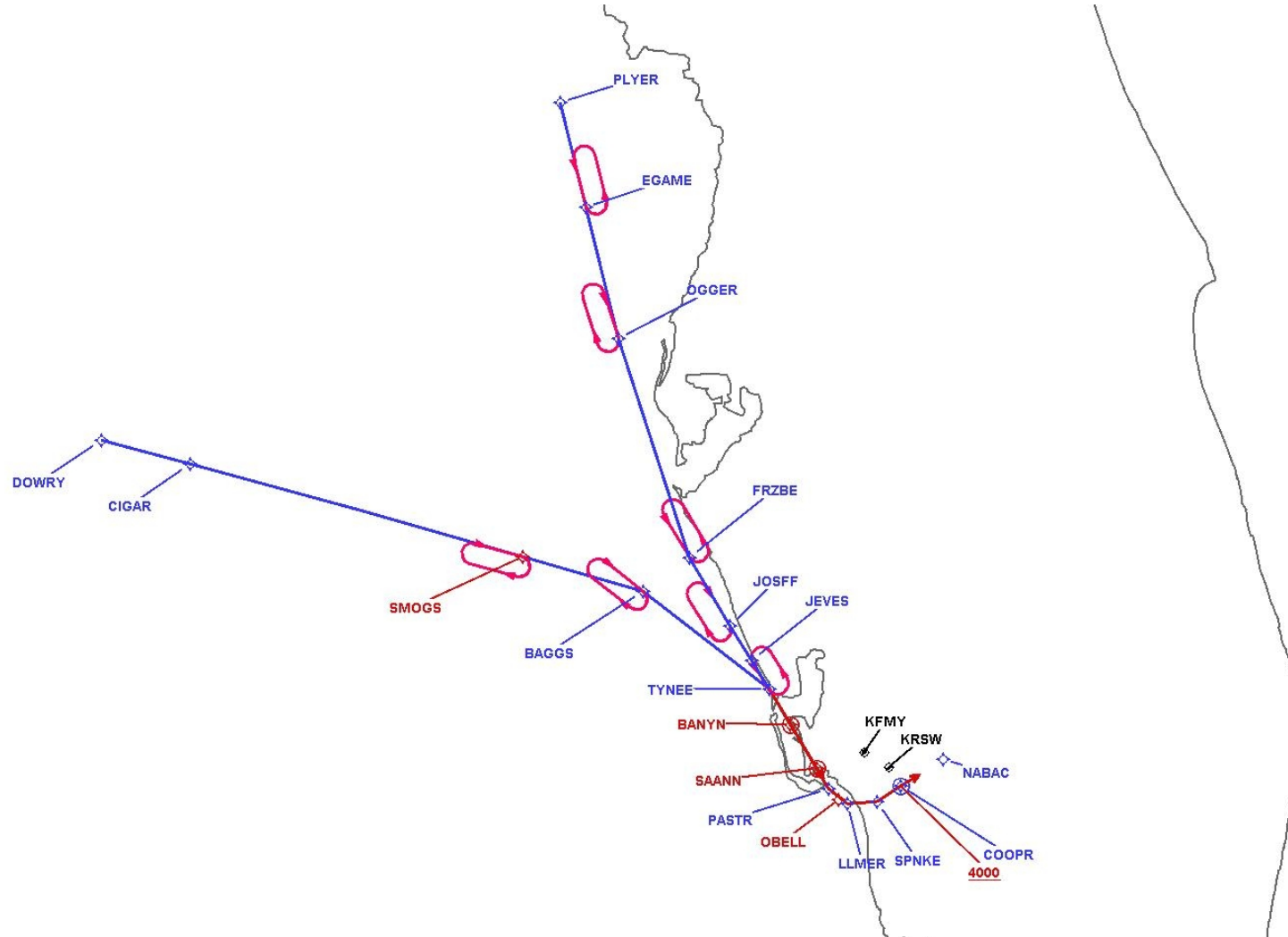
Arrival Name	Number	STAR Computer Code	Superseded Number	Dated	Effective Date
TYNEE (RNAV)	THREE	TYNEE.TYNEE3	TWO	09/13/2018	31 Oct 2024
Graphic Depiction 2					



FEDERAL AVIATION ADMINISTRATION
FLIGHT STANDARDS SERVICE
STANDARD TERMINAL ARRIVAL (STAR)

Bearings, headings, courses, tracks and radials are magnetic. Elevations and altitudes are in feet, MSL. Altitudes are minimum altitudes unless otherwise indicated.
Ceilings are in feet above airport elevation. Distances are in nautical miles. Visibilities are in statute miles or feet RVR unless otherwise indicated.

Arrival Name	Number	STAR Computer Code	Superseded Number	Dated	Effective Date
TYNEE (RNAV)	THREE	TYNEE.TYNEE3	TWO	09/13/2018	31 Oct 2024
Graphic Depiction 3					



FEDERAL AVIATION ADMINISTRATION
FLIGHT STANDARDS SERVICE
STAR (DATA RECORD)

Arrival Name TYNEE (RNAV)		Number THREE		STAR Computer Code TYNEE.TYNEE3			Superseded Number TWO			Dated 09/13/2018	Effective Date 31 Oct 2024
FIX/NAVAID	LAT/LONG	C	FO/FB	LEG TYPE	TC	DIST (NM)	ALTITUDE	SPEED	REMARKS		
En Route Transition											
DOWRY	273338.19N / 0850952.66W	Y		IF					DOWRY.TYNEE3		
CIGAR	272936.61N / 0844659.51W	Y	FB	TF	101.08	20.74					
SMOGS	271354.93N / 0832133.48W	Y	FB	TF	101.30	77.66					
BAGGS	270803.28N / 0825027.20W	Y	FB	TF	101.78	28.35					
TYNEE	264750.66N / 0821702.65W	Y	FB	TF	123.90	36.02					
En Route Transition											
FRZBE	271624.53N / 0823928.03W	Y		IF					FRZBE.TYNEE3		
JOSFF	270135.32N / 0822756.71W	Y	FB	TF	145.14	18.00					
JEVES	265404.77N / 0822158.91W	Y	FB	TF	144.54	09.19					
TYNEE	264750.66N / 0821702.65W	Y	FB	TF	144.59	07.63					
En Route Transition											
OGGER	280443.19N / 0830107.67W	Y		IF					OGGER.TYNEE3		
FRZBE	271624.53N / 0823928.03W	Y	FB	TF	158.16	51.87					
JOSFF	270135.32N / 0822756.71W	Y	FB	TF	145.14	18.00					
JEVES	265404.77N / 0822158.91W	Y	FB	TF	144.54	09.19					
TYNEE	264750.66N / 0821702.65W	Y	FB	TF	144.59	07.63					
En Route Transition											
PLYER	285651.36N / 0832008.59W	Y		IF					PLYER.TYNEE3		
EGAME	283351.38N / 0831145.28W	Y	FB	TF	162.15	24.10					
OGGER	280443.19N / 0830107.67W	Y	FB	TF	162.07	30.54					
FRZBE	271624.53N / 0823928.03W	Y	FB	TF	158.16	51.87					
JOSFF	270135.32N / 0822756.71W	Y	FB	TF	145.14	18.00					
JEVES	265404.77N / 0822158.91W	Y	FB	TF	144.54	09.19					
TYNEE	264750.66N / 0821702.65W	Y	FB	TF	144.59	07.63					

FEDERAL AVIATION ADMINISTRATION
FLIGHT STANDARDS SERVICE
STAR (DATA RECORD)

Arrival Name TYNEE (RNAV)		Number THREE		STAR Computer Code TYNEE.TYNEE3		Superseded Number TWO		Dated 09/13/2018	Effective Date 31 Oct 2024
<u>FIX/NAVAID</u>	<u>LAT/LONG</u>	<u>C</u>	<u>FO/FB</u>	<u>LEG TYPE</u>	<u>TC</u>	<u>DIST (NM)</u>	<u>ALTITUDE</u>	<u>SPEED</u>	<u>REMARKS</u>
En Route Transition									
SMOGS	271354.93N / 0832133.48W	Y		IF					SMOGS.TYNEE3
BAGGS	270803.28N / 0825027.20W	Y	FB	TF	101.78	28.35			
TYNEE	264750.66N / 0821702.65W	Y	FB	TF	123.90	36.02			
Common Route									
TYNEE	264750.66N / 0821702.65W	Y		IF					TYNEE.TYNEE3
BANYN	264016.90N / 0821104.48W	Y	FO	TF	144.65	09.24			
KFMY				FM	144.65				
Runway Transition									
TYNEE	264750.66N / 0821702.65W	Y		IF					
SAANN	263053.22N / 0820340.00W	Y	FO	TF	144.62	20.73			
KRSW:RWY 6				FM	144.62				
Runway Transition									
TYNEE	264750.66N / 0821702.65W	Y		IF					
PASTR	262624.99N / 0820009.33W	Y	FB	TF	144.62	26.18			
LLMER	262321.00N / 0815516.00W	Y	FB	TF	124.84	05.35			
SPNKE	262418.90N / 0814750.77W	Y	FB	TF	081.76	06.73			
COOPR	262806.11N / 0814201.65W	Y	FO	TF	054.11	06.44	AT/ABOVE 4000		
KRSW:RWY 24				FM	054.11				