

FEDERAL AVIATION ADMINISTRATION  
FLIGHT STANDARDS SERVICE  
STANDARD TERMINAL ARRIVAL (STAR)

Bearings, headings, courses, tracks and radials are magnetic. Elevations and altitudes are in feet, MSL. Altitudes are minimum altitudes unless otherwise indicated.  
Ceilings are in feet above airport elevation. Distances are in nautical miles. Visibilities are in statute miles or feet RVR unless otherwise indicated.

Arrival Name	Number	STAR Computer Code	Superseded Number	Dated	Effective Date
<b>COKTL (RNAV)</b>	<b>THREE</b>	<b>COKTL.COKTL3</b>	<b>TWO</b>	<b>07/14/2022</b>	<b>15JUNE2023</b>

TRANSITION ROUTES:

Transition Name	Transition Computer Codes	From FIX/NAVAID	To FIX/NAVAID	Course	Distance	MEA	MOCA	MAA	Crossing Altitudes / Fixes
FLCHR	FLCHR.COKTL3	FLCHR	FLCHR						AT/ABOVE FL240
			TBRAN	134.39	32.71	FL210	9700		
			ARYEL	120.19	17.77	FL210	9700		AT/ABOVE FL210
			COKTL	120.36	18.46	16000	9700		BETWEEN 16000 AND FL190
GIINN	GIINN.COKTL3	GIINN	GIINN						
			TBRAN	114.84	15.30	FL210	9700		
			ARYEL	120.19	17.77	FL210	9700		AT/ABOVE FL210
			COKTL	120.36	18.46	16000	9700		BETWEEN 16000 AND FL190
TQILA	TQILA.COKTL3	TQILA	TQILA						
			BASIC	134.22	10.51	FL240	9700		
			FLCHR	134.27	16.84	FL240	9700		AT/ABOVE FL240
			TBRAN	134.39	32.71	FL210	9700		
			ARYEL	120.19	17.77	FL210	9700		AT/ABOVE FL210
			COKTL	120.36	18.46	16000	9700		BETWEEN 16000 AND FL190

**ARRIVAL ROUTE DESCRIPTION:**

FROM COKTL ON TRACK 116.88/10.95 TO CROSS ZLLDA AT OR ABOVE 14000.

LANDING RWY 1L/R: FROM ZLLDA ON TRACK 150.75/13.11 TO CROSS MEZKL AT OR BELOW 12000, THEN ON TRACK 150.65/6.34 TO LOOMI, THEN ON TRACK 117.92/7.13 TO CROSS ZINPI BETWEEN 10000 AND 11000, THEN ON TRACK 080.84/5.11 TO CROSS BAUMM BETWEEN 8600 AND 11000, THEN ON TRACK 030.29/5.03 TO CROSS ROAMN AT 8000 AND AT 210 KIAS. EXPECT ILS OR LOC RWY 1L OR RADAR VECTORS TO FINAL APPROACH COURSE.

LANDING RWY 8L/R: FROM ZLLDA ON TRACK 150.75/13.11 TO CROSS MEZKL AT OR BELOW 12000, THEN ON TRACK 150.65/6.34 TO LOOMI, THEN ON TRACK 117.92/7.13 TO CROSS ZINPI BETWEEN 10000 AND 11000, THEN ON TRACK 080.84/5.11 TO CROSS BAUMM BETWEEN 8600 AND 11000, THEN ON TRACK 006.28/7.98 TO CROSS YAGGR AT 8000 AND AT 210 KIAS, THEN ON TRACK 005.00. EXPECT RADAR VECTORS TO FINAL APPROACH COURSE.

LANDING RWY 26L/R, 19L/R: FROM ZLLDA ON TRACK 099.72/16.64 TO CROSS DEEON AT OR ABOVE 12000, THEN ON TRACK 099.91/4.00 TO CROSS ENNVY AT OR ABOVE 11000, THEN ON TRACK 082.92/12.02 TO CROSS REDQN AT OR ABOVE 9000 AND AT 210 KIAS, THEN ON TRACK 083.06/2.40 TO TWAFL, THEN ON TRACK 079.32/2.17 TO CROSS BERBN AT 8000 AND AT 210 KIAS, THEN ON TRACK 079.32. EXPECT RADAR VECTORS TO FINAL APPROACH COURSE.

**PBN REQUIREMENT NOTES:**

RNAV 1 - DME/DME/IRU OR GPS

**EQUIPMENT REQUIREMENT NOTES:**

RADAR REQUIRED

**PROCEDURAL DATA NOTES:**

NOTE: JET AIRCRAFT ONLY

NOTE: GIINN TRANSITION ASSIGNED BY ATC--DO NOT FILE.

FEDERAL AVIATION ADMINISTRATION  
FLIGHT STANDARDS SERVICE  
STANDARD TERMINAL ARRIVAL (STAR)

Bearings, headings, courses, tracks and radials are magnetic. Elevations and altitudes are in feet, MSL. Altitudes are minimum altitudes unless otherwise indicated.  
Ceilings are in feet above airport elevation. Distances are in nautical miles. Visibilities are in statute miles or feet RVR unless otherwise indicated.

Arrival Name	Number	STAR Computer Code	Superseded Number	Dated	Effective Date
COKTL (RNAV)	THREE	COKTL.COKTL3	TWO	07/14/2022	15JUNE2023

**FIXES AND/OR HOLDING PATTERNS:**

CHART HOLDING AT ARYL: HOLD NW, RT, 120.19 INBOUND, 11 NM LEGS.  
CHART HOLDING AT COKTL: HOLD NW, RT, 120.36 INBOUND, 10 NM LEGS.  
CHART HOLDING AT SHUFL: HOLD NW, LT, 129.97 INBOUND, 12 NM LEGS.  
CHART HOLDING AT TTMSN: HOLD W, LT, 073.41 INBOUND, 12 NM LEGS.

**COMMUNICATIONS:**

CHART: LAS APP CON  
CHART: LAS TOWER

**AIRPORTS SERVED:**

<u>AIRPORT ID</u>	<u>CITY</u>	<u>STATE</u>
KLAS	LAS VEGAS	NV

**LOST COMMUNICATIONS PREFERENCES:**

LANDING RUNWAY 1L: AT ROAMN EXECUTE ILS OR LOC RWY 1L APPROACH.  
LANDING RUNWAY 8R: AT YAGGR EXECUTE RNAV (RNP) RWY 8R APPROACH, IF UNABLE, PROCEED VIA LAST TRACK TO INTERCEPT THE FINAL APPROACH COURSE; IF UNABLE, MAINTAIN 7000 DIRECT LAS VORTAC THEN DIRECT BLD VORTAC AND EXECUTE ILS OR LOC RWY 26L APPROACH.  
LANDING RUNWAY 26L: AT BERBN EXECUTE ILS OR LOC RWY 26L APPROACH.  
LANDING RUNWAY 26R: AT BERBN EXECUTE ILS OR LOC RWY 26R APPROACH.

**REMARKS:**

MEAs FL190 AND ABOVE NEEDED TO MITIGATE CRITICAL DMEs AND INSURE ADEQUATE SIGNAL COVERAGE FOR DME/DME/IRU NAVIGATION.  
FIX BAUMM UTILIZES 25 DEGREE BANK ANGLE COUPLED WITH 39 KNOT TAILWIND COMPONENT.  
CONTROLLING OBST BAUMM TO YAGGR SEGMENT IS 5898 MSL AAO (355333.32N/1152323.05W) (DTED DATABASE IDENTIFIED HIGHER TERRAIN IN THE REGION).  
THE ENVIRONMENTAL REVIEW UNDER ORDER 1050.1 (LATEST EDITION) AND THE NOISE SCREENING HAVE BEEN ACCOMPLISHED.

**ADDITIONAL FLIGHT DATA:**

DME/DME ASSESSMENT: SAT (RNP 2.0)  
MAG VAR = KLAS 11E/2020  
CHART AT ROAMN TERMINUS: KLAS LDG RWY 1L/R  
CHART AT BERBN TERMINUS: KLAS LDG RWY 26L/R, 19L/R  
CHART AT YAGGR TERMINUS: KLAS LDG RWY 8L/R

FEDERAL AVIATION ADMINISTRATION  
FLIGHT STANDARDS SERVICE  
STANDARD TERMINAL ARRIVAL (STAR)

Bearings, headings, courses, tracks and radials are magnetic. Elevations and altitudes are in feet, MSL. Altitudes are minimum altitudes unless otherwise indicated.  
Ceilings are in feet above airport elevation. Distances are in nautical miles. Visibilities are in statute miles or feet RVR unless otherwise indicated.

Arrival Name	Number	STAR Computer Code	Superseded Number	Dated	Effective Date
COKTL (RNAV)	THREE	COKTL.COKTL3	TWO	07/14/2022 <i>Digitally signed by</i> <b>ERIC N SUSKI</b>	15JUNE2023

**FLIGHT INSPECTED BY:**

STANLEY PHILLIPS

**ORGANIZATION:**

FPO

**DATE:**

03/01/2023

Flight Inspected Signature:

Mar 02, 2023

**DEVELOPED BY:**

NICK COLVIN A&amp;P SPECIALIST

LAS VEGAS  
TRACON

9/20/2022

Developed By Signature:

*Digitally signed by***ERIC N SUSKI**

Feb 02, 2023

**APPROVED BY:**

JOHNNIE BAKER

AJV-A430

Approved By Signature:

*Digitally signed by***ERIC N SUSKI**

Feb 02, 2023

**CHANGES:**

1. ADDED STAND-ALONE HOLDING FIXES/PATTERNS AT SHUFL AND TTMSN.
2. REMOVED AIRPORT NAME FROM AIRPORTS SERVED.

**REASONS:**

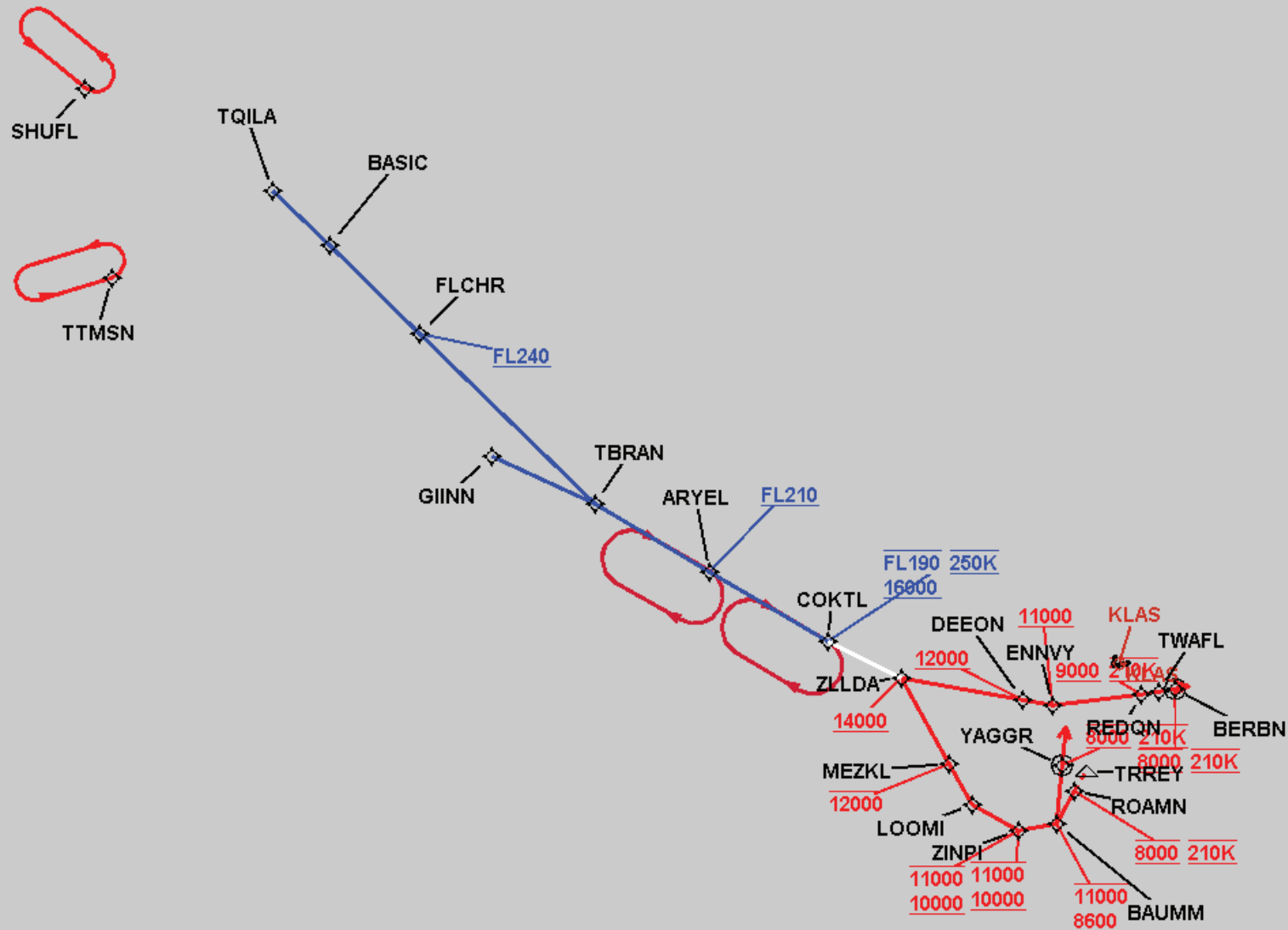
1. ATC REQUEST TO FACILITATE ARRIVAL FLOW METERING.
2. NO LONGER DOCUMENTED.

FEDERAL AVIATION ADMINISTRATION  
FLIGHT STANDARDS SERVICE  
STANDARD TERMINAL ARRIVAL (STAR)

Bearings, headings, courses, tracks and radials are magnetic. Elevations and altitudes are in feet, MSL. Altitudes are minimum altitudes unless otherwise indicated.  
Ceilings are in feet above airport elevation. Distances are in nautical miles. Visibilities are in statute miles or feet RVR unless otherwise indicated.

Arrival Name	Number	STAR Computer Code	Superseded Number	Dated	Effective Date
COKTL (RNAV)	THREE	COKTL.COKTL3	TWO	07/14/2022	15JUNE2023

Graphic Depiction 1

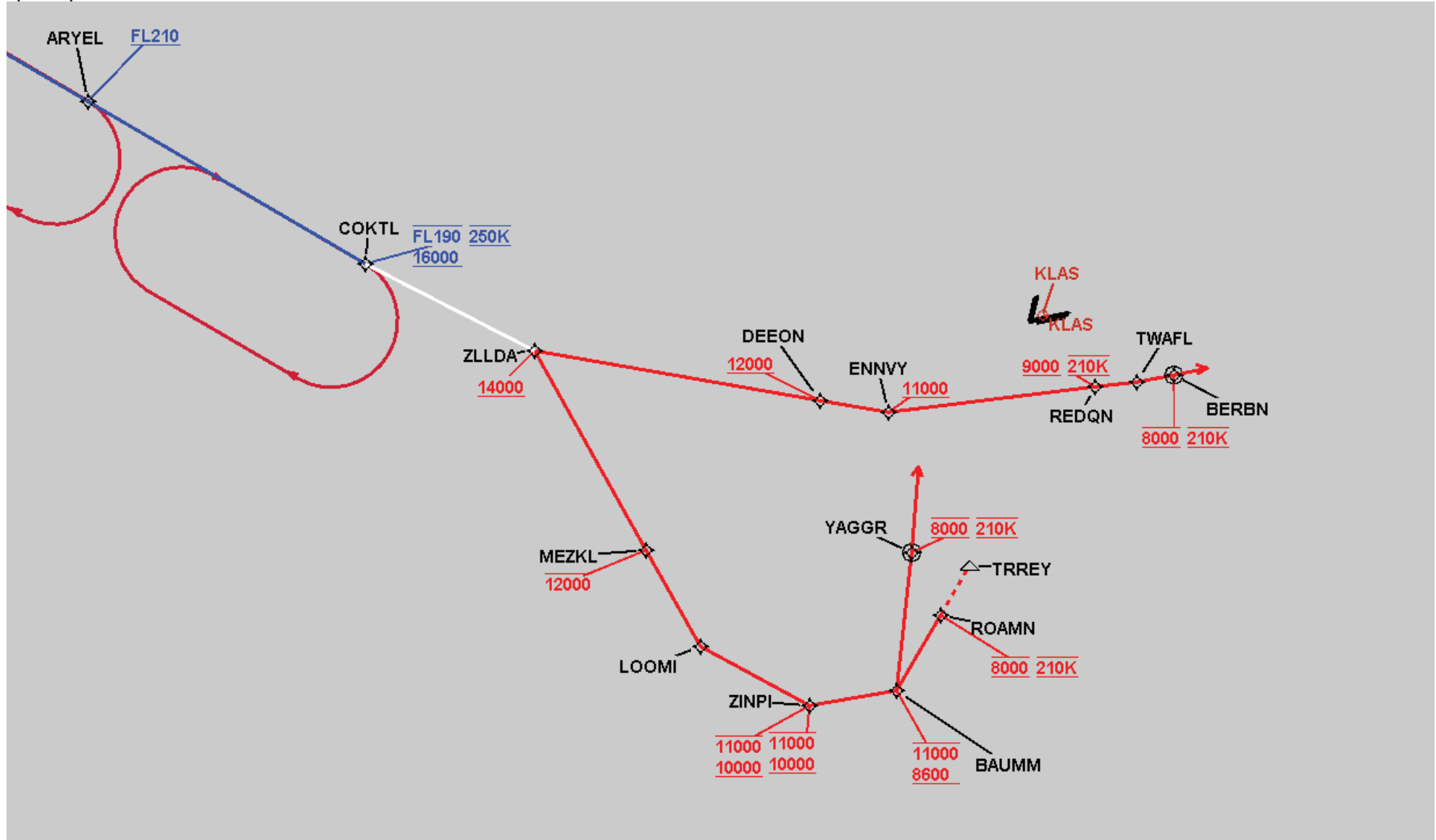


FEDERAL AVIATION ADMINISTRATION  
FLIGHT STANDARDS SERVICE  
STANDARD TERMINAL ARRIVAL (STAR)

Bearings, headings, courses, tracks and radials are magnetic. Elevations and altitudes are in feet, MSL. Altitudes are minimum altitudes unless otherwise indicated.  
Ceilings are in feet above airport elevation. Distances are in nautical miles. Visibilities are in statute miles or feet RVR unless otherwise indicated.

Arrival Name	Number	STAR Computer Code	Superseded Number	Dated	Effective Date
COKTL (RNAV)	THREE	COKTL.COKTL3	TWO	07/14/2022	15JUNE2023

Graphic Depiction 2



**FEDERAL AVIATION ADMINISTRATION  
FLIGHT STANDARDS SERVICE  
STAR (DATA RECORD)**

Arrival Name COKTL (RNAV)	Number THREE		STAR Computer Code COKTL.COKTL3		Superseded Number TWO		Dated 07/14/2022	Effective Date 15JUNE2023	
<u>FIX/NAVAID</u>	<u>LAT/LONG</u>	<u>C</u>	<u>FO/FB</u>	<u>LEG TYPE</u>	<u>TC</u>	<u>DIST (NM)</u>	<u>ALTITUDE</u>	<u>SPEED</u>	<u>REMARKS</u>
En Route Transition									
FLCHR	370602.27N / 1165231.36W	Y		IF			AT/ABOVE FL240		FLCHR.COKTL3
TBRAN	363902.48N / 1162925.81W	Y	FB	TF	145.39	32.71			
ARYEL	362718.20N / 1161251.25W	Y	FB	TF	131.19	17.77	AT/ABOVE FL210		
COKTL	361503.98N / 1155543.16W	Y	FB	TF	131.36	18.46	16000BFL190	AT 250K	
En Route Transition									
GIINN	364801.66N / 1164450.66W	Y		IF					GIINN.COKTL3
TBRAN	363902.48N / 1162925.81W	Y	FB	TF	125.84	15.30			
ARYEL	362718.20N / 1161251.25W	Y	FB	TF	131.19	17.77	AT/ABOVE FL210		
COKTL	361503.98N / 1155543.16W	Y	FB	TF	131.36	18.46	16000BFL190	AT 250K	
En Route Transition									
TQILA	372833.00N / 1171202.00W	Y		IF					TQILA.COKTL3
BASIC	371954.27N / 1170430.98W	Y	FB	TF	145.22	10.51			
FLCHR	370602.27N / 1165231.36W	Y	FB	TF	145.27	16.84	AT/ABOVE FL240		
TBRAN	363902.48N / 1162925.81W	Y	FB	TF	145.39	32.71			
ARYEL	362718.20N / 1161251.25W	Y	FB	TF	131.19	17.77	AT/ABOVE FL210		
COKTL	361503.98N / 1155543.16W	Y	FB	TF	131.36	18.46	16000BFL190	AT 250K	
Common Route									
COKTL	361503.98N / 1155543.16W	Y		IF			16000BFL190	AT 250K	COKTL.COKTL3
ZLLDA	360819.66N / 1154503.06W	Y	FB	TF	127.88	10.95	AT/ABOVE 14000		
Runway Transition									
ZLLDA	360819.66N / 1154503.06W	Y		IF			AT/ABOVE 14000		
MEZKL	355551.36N / 1153959.70W	Y	FB	TF	161.75	13.11	AT/BELOW 12000		
LOOMI	354949.76N / 1153732.46W	Y	FB	TF	161.65	06.34			
ZINPI	354520.49N / 1153043.57W	Y	FB	TF	128.92	07.13	10000B11000		
BAUMM	354510.45N / 1152426.79W	Y	FB	TF	091.84	05.11	8600B11000		

**FEDERAL AVIATION ADMINISTRATION  
FLIGHT STANDARDS SERVICE  
STAR (DATA RECORD)**

Arrival Name COKTL (RNAV)		Number THREE		STAR Computer Code COKTL.COKTL3		Superseded Number TWO		Dated 07/14/2022	Effective Date 15JUNE2023
FIX/NAVAID	LAT/LONG	C	FO/FB	LEG TYPE	TC	DIST (NM)	ALTITUDE	SPEED	REMARKS
ROAMN	354857.47N / 1152021.90W	Y	FB	TF	041.29	05.03	AT 8000	AT 210K	
KLAS:RWY 1L, RWY 1R									
Runway Transition									
ZLLDA	360819.66N / 1154503.06W	Y		IF			AT/ABOVE 14000		
MEZKL	355551.36N / 1153959.70W	Y	FB	TF	161.75	13.11	AT/BELOW 12000		
LOOMI	354949.76N / 1153732.46W	Y	FB	TF	161.65	06.34			
ZINPI	354520.49N / 1153043.57W	Y	FB	TF	128.92	07.13	10000B11000		
BAUMM	354510.45N / 1152426.79W	Y	FB	TF	091.84	05.11	8600B11000		
YAGGR	355248.54N / 1152131.70W	Y	FO	TF	017.28	07.98	AT 8000	AT 210K	
KLAS:RWY 8L, RWY 8R				FM	016.00				
Runway Transition									
ZLLDA	360819.66N / 1154503.06W	Y		IF			AT/ABOVE 14000		
DEEON	360224.36N / 1152551.32W	Y	FB	TF	110.72	16.64	AT/ABOVE 12000		
ENNVY	360058.51N / 1152114.95W	Y	FB	TF	110.91	04.00	AT/ABOVE 11000		
REDQN	360008.26N / 1150628.33W	Y	FB	TF	093.92	12.02	AT/ABOVE 9000	AT 210K	
TWAFI	355958.01N / 1150331.31W	Y	FB	TF	094.06	02.40			
BERBN	355957.25N / 1150050.72W	Y	FO	TF	090.32	02.17	AT 8000	AT 210K	
KLAS:RWY 19L, RWY 19R, RWY 26L, RWY 26R				FM	090.32				