

FEDERAL AVIATION ADMINISTRATION
FLIGHT STANDARDS SERVICE
STANDARD TERMINAL ARRIVAL (STAR)

Bearings, headings, courses, tracks and radials are magnetic. Elevations and altitudes are in feet, MSL. Altitudes are minimum altitudes unless otherwise indicated.
Distances are in nautical miles (NM). Graphic depictions attached.

Arrival Name	Number	STAR Computer Code	Superseded Number	Dated	Effective Date
JAYSN (RNAV)	TWO	JAYSN.JAYSN2	ONE	02/25/2021	19MAY2022

TRANSITION ROUTES:

Transition Name	Transition Computer Codes	From FIX/NAVAID	To FIX/NAVAID	Course	Distance	MEA	MOCA	MAA	Crossing Altitudes / Fixes
BYRDY	BYRDY.JAYSN2	BYRDY	BYRDY						
			JAYSN	097.60	18.06	12000	7200		AT/BELOW FL190

ARRIVAL ROUTE DESCRIPTION:

FROM JAYSN ON TRACK 097.53/10.00 TO WAPID.

LANDING RWY 1L/R: FROM WAPID ON TRACK 139.23/15.41 TO CROSS PESHY AT OR ABOVE 15000 AND AT 250 KIAS, THEN ON TRACK 165.60/8.50 TO CROSS PAIRR AT OR ABOVE 14200, THEN ON TRACK 165.60/12.95 TO CROSS MEZKL AT OR BELOW 12000, THEN ON TRACK 150.65/6.34 TO LOOMI, THEN ON TRACK 117.92/7.13 TO CROSS ZINPI BETWEEN 10000 AND 11000, THEN ON TRACK 080.84/5.11 TO CROSS BAUMM BETWEEN 8600 AND 11000, THEN ON TRACK 030.29/5.03 TO CROSS ROAMN AT 8000 AND AT 210 KIAS. EXPECT RADAR VECTORS TO FINAL APPROACH COURSE.

LANDING RWY 8L/R: FROM WAPID ON TRACK 139.23/15.41 TO CROSS PESHY AT OR ABOVE 15000 AND AT 250 KIAS, THEN ON TRACK 165.60/8.50 TO CROSS PAIRR AT OR ABOVE 14200, THEN ON TRACK 165.60/12.95 TO CROSS MEZKL AT OR BELOW 12000, THEN ON TRACK 150.65/6.34 TO LOOMI, THEN ON TRACK 117.92/7.13 TO CROSS ZINPI BETWEEN 10000 AND 11000, THEN ON TRACK 080.84/5.11 TO CROSS BAUMM BETWEEN 8600 AND 11000, THEN ON TRACK 006.28/7.98 TO CROSS YAGGR AT 8000 AND AT 210 KIAS, THEN ON TRACK 005.00. EXPECT RADAR VECTORS TO FINAL APPROACH COURSE.

LANDING RWY 19L/R: FROM WAPID ON TRACK 080.51/9.54 TO CROSS KEEKE AT OR ABOVE 12000, THEN ON TRACK 103.82/6.75 TO ECAKO, THEN ON TRACK 117.65/3.09 TO CROSS DRXLR AT OR ABOVE 10000, THEN ON TRACK 117.89/5.06 TO CROSS MYSHL AT OR ABOVE 8700, THEN ON TRACK 117.94/9.30 TO CROSS CUEVS AT OR ABOVE 6100, THEN ON TRACK 118.03/6.55 TO CROSS KORYN AT 4800, THEN ON TRACK 118.03. EXPECT RADAR VECTORS TO FINAL APPROACH COURSE.

LANDING RWY 26L/R: FROM WAPID ON TRACK 139.23/15.41 TO CROSS PESHY AT OR ABOVE 15000 AND AT 250 KIAS, THEN ON TRACK 139.20/8.60 TO CROSS NEEMA AT OR ABOVE 14200, THEN ON TRACK 114.88/15.06 TO CROSS ENNVY AT OR ABOVE 11000, THEN ON TRACK 082.92/12.02 TO CROSS REDQN AT OR ABOVE 9000 AND AT 210 KIAS, THEN ON TRACK 083.06/2.40 TO TWAFL, THEN ON TRACK 079.32/2.17 TO CROSS BERBN AT 8000 AND AT 210 KIAS, THEN ON TRACK 079.32. EXPECT RADAR VECTORS TO FINAL APPROACH COURSE.

PBN REQUIREMENT NOTES

RNAV 1 - GPS

EQUIPMENT REQUIREMENT NOTES

RADAR REQUIRED

PROCEDURAL DATA NOTES:

CHART NOTE: DO NOT FILE - TO BE ASSIGNED BY ATC.

FIXES AND/OR HOLDING PATTERNS:

COMMUNICATIONS:

CHART: LAS APP CON.

CHART: LAS TOWER.

AIRPORTS SERVED:

HARRY REID INTL, LAS VEGAS, NV (KLAS)

LOST COMMUNICATIONS PROCEDURE:

LANDING RUNWAY 8R: AT YAGGR EXECUTE RNAV (RNP) RWY 8R APPROACH, IF UNABLE, PROCEED VISUALLY TO INTERCEPT THE FINAL APPROACH COURSE; IF UNABLE, MAINTAIN 8000 PROCEED TO LAS VORTAC THEN MAINTAIN 7000 PROCEED TO BLD VORTAC AND EXECUTE ILS OR LOC RWY 26L APPROACH.

FEDERAL AVIATION ADMINISTRATION
FLIGHT STANDARDS SERVICE
STANDARD TERMINAL ARRIVAL (STAR)

Bearings, headings, courses, tracks and radials are magnetic. Elevations and altitudes are in feet, MSL. Altitudes are minimum altitudes unless otherwise indicated.
Distances are in nautical miles (NM). Graphic depictions attached.

Arrival Name	Number	STAR Computer Code	Superseded Number	Dated	Effective Date
JAYSN (RNAV)	TWO	JAYSN.JAYSN2	ONE	02/25/2021	19MAY2022

REMARKS:

FIX BAUMM UTILIZES 25 DEGREE BANK ANGLE COUPLED WITH 45.81 KNOT TAILWIND COMPONENT.

ADDITIONAL FLIGHT DATA:

DME/DME ASSESSMENT: UNSAT.

REFERENCE MAGNETIC VARIATION = KLAS 11E/2020

CHART AT KORYN TERMINUS: KLAS LDG RWY 19L/R

CHART AT BERBN TERMINUS: KLAS LDG RWY 26L/R

CHART AT YAGGR TERMINUS: KLAS LDG RWY 8L/R

CHART AT ROAMN TERMINUS: KLAS LDG RWY 1L/R

FLIGHT INSPECTED BY:

DANIEL C FAVORITE
Name

FIOG
Organization

12/01/2021
Date

Digitally signed by

ALLAN WILL

Mar 14, 2022

Signature

DEVELOPED BY:

MARK PHIPPS, LAS METROLEX PROJECT MANAGER
Name

DENVER ARTCC
Organization

9/18/2021
Date

Digitally signed by

ALLAN WILL

Mar 14, 2022

Signature

APPROVED BY:

MARLON ROBINSON
Name

AJV-A420
Organization

Date

Digitally signed by

ALLAN WILL

Mar 14, 2022

Signature

CHANGES:

1. CHANGED ZINPI RESTRICTION FROM AT/ABOVE 10000 TO BETWEEN 10000 AND 11000 AND ADDED RESTRICTION AT BAUMM TO CROSS BETWEEN 8600 AND 11000.
2. CHANGED RWY 08L/R TRANSITION TERMINATION FROM VM LEG TO FM 005 TRACK. AMENDED AFFECTED ARRIVAL ROUTE DESCRIPTION.
3. PROCEDURAL DATA NOTES: CHANGED "TURBOJET AIRCRAFT ONLY" TO "JET AIRCRAFT ONLY"
4. PROCEDURAL DATA NOTES: DELETED "RNAV 1" AND REPLACED WITH PBN REQUIREMENT NOTES: "RNAV 1 - GPS".

REASONS:

1. ATC REQUEST: SEGREGATES FROM TRAFFIC ON RADYR SID.
2. ATC REQUEST: CONSISTENT WITH OTHER RWY 08L/R STAR TRANSITIIONS.
3. ATC REQUEST.
4. IAW 8260.19I.

FEDERAL AVIATION ADMINISTRATION
FLIGHT STANDARDS SERVICE
STANDARD TERMINAL ARRIVAL (STAR)

Bearings, headings, courses, tracks and radials are magnetic. Elevations and altitudes are in feet, MSL. Altitudes are minimum altitudes unless otherwise indicated.
Distances are in nautical miles (NM). Graphic depictions attached.

Arrival Name	Number	STAR Computer Code	Superseded Number	Dated	Effective Date
JAYSN (RNAV)	TWO	JAYSN.JAYSN2	ONE	02/25/2021	19MAY2022

01/18/22: THIS IS AN UPDATED COPY OF THE FORM DEVELOPED ON 09/18/21.

1. PROCEDURAL DATA NOTES: DELETED GPS REQUIRED and JET AIRCRAFT ONLY - NOTE IS NOW TIED INTO THE RNAV 1 - GPS REQUIRED NOTE AND ATC REQUEST TO DELETE JET AIRCRAFT NOTE.

2. CHANGED LOST COMM INSTRUCTIONS FOR RWY 8R FROM "LANDING RUNWAY 8R: AT YAGGR EXECUTE RNAV (RNP) RWY 8R APPROACH, IF UNABLE, PROCEED VISUALLY TO INTERCEPT THE FINAL APPROACH COURSE; IF UNABLE, MAINTAIN 7000 DIRECT LAS VORTAC THEN DIRECT BLD VORTAC AND EXECUTE ILS OR LOCALIZER RWY 26L APPROACH," TO "LANDING RUNWAY 8R: AT YAGGR EXECUTE RNAV (RNP) RWY 8R APPROACH, IF UNABLE, PROCEED VISUALLY TO INTERCEPT THE FINAL APPROACH COURSE; IF UNABLE, MAINTAIN 8000 PROCEED TO LAS VORTAC THEN PROCEED TO BLD VORTAC AT 7000 AND EXECUTE ILS OR LOC RWY 26L APPROACH" - IAW 8260.19I, PARA 4-5-2o(4). ALTITUDE YAGGR TO LAS RAISED TO 8000 BASED ON TERPS ANALYSIS.

3. CHANGED LOST COMM INSTRUCTIONS FOR RWY 19L FROM "LANDING RUNWAY 19L: AT KORYN PROCEED VISUALLY VIA THE LAST TRACK TO INTERCEPT THE FINAL APPROACH COURSE; IF UNABLE, MAINTAIN 7000 PROCEED DIRECT LAS VORTAC THEN DIRECT BLD VORTAC AND EXECUTE ILS OR LOC RWY 26L APPROACH" TO "LANDING RUNWAY 19L: AT KORYN PROCEED VISUALLY VIA THE LAST TRACK TO INTERCEPT THE FINAL APPROACH COURSE; IF UNABLE, MAINTAIN 7000 PROCEED TO LAS VORTAC THEN PROCEED TO BLD VORTAC AND EXECUTE ILS OR LOC RWY 26L APPROACH" - IAW 8260.19I, PARA 4-5-2o(4).

03/02/22: THIS IS AN UPDATED COPY OF THE FORM DEVELOPED ON 09/18/21.

1. CHANGED LOST COMM INSTRUCTIONS FROM "LANDING RUNWAY 8R: AT YAGGR EXECUTE RNAV (RNP) RWY 8R APPROACH, IF UNABLE, PROCEED VISUALLY TO INTERCEPT THE FINAL APPROACH COURSE; IF UNABLE, MAINTAIN 8000 PROCEED TO LAS VORTAC THEN PROCEED TO BLD VORTAC AT 7000 AND EXECUTE ILS OR LOC RWY 26L APPROACH" TO "LANDING RUNWAY 8R: AT YAGGR EXECUTE RNAV (RNP) RWY 8R APPROACH, IF UNABLE, PROCEED VISUALLY TO INTERCEPT THE FINAL APPROACH COURSE; IF UNABLE, PROCEED TO LAS VORTAC TO CROSS LAS AT 8000 THEN DESCEND TO 7000 AND PROCEED TO BLD VORTAC AT 7000 AND EXECUTE ILS OR LOC RWY 26L APPROACH" - TO MATCH VERBIAGE USED ON RKSTR AND RNDZR STARS.

03/14/22: THIS IS AN UPDATED COPY OF THE FORM DEVELOPED ON 09/18/21.

1. LOST COMMS: CHANGED INSTRUCTIONS FROM ""LANDING RUNWAY 8R: AT YAGGR EXECUTE RNAV (RNP) RWY 8R APPROACH, IF UNABLE, PROCEED VISUALLY TO INTERCEPT THE FINAL APPROACH COURSE; IF UNABLE, MAINTAIN 8000 PROCEED TO LAS VORTAC THEN PROCEED TO BLD VORTAC AT 7000 AND EXECUTE ILS OR LOC RWY 26L APPROACH" TO "LANDING RUNWAY 8R: AT YAGGR EXECUTE RNAV (RNP) RWY 8R APPROACH, IF UNABLE, PROCEED VISUALLY TO INTERCEPT THE FINAL APPROACH COURSE; IF UNABLE, MAINTAIN 8000 PROCEED TO LAS VORTAC THEN MAINTAIN 7000 PROCEED TO BLD VORTAC AND EXECUTE ILS OR LOC RWY 26L APPROACH" - PER AFS.

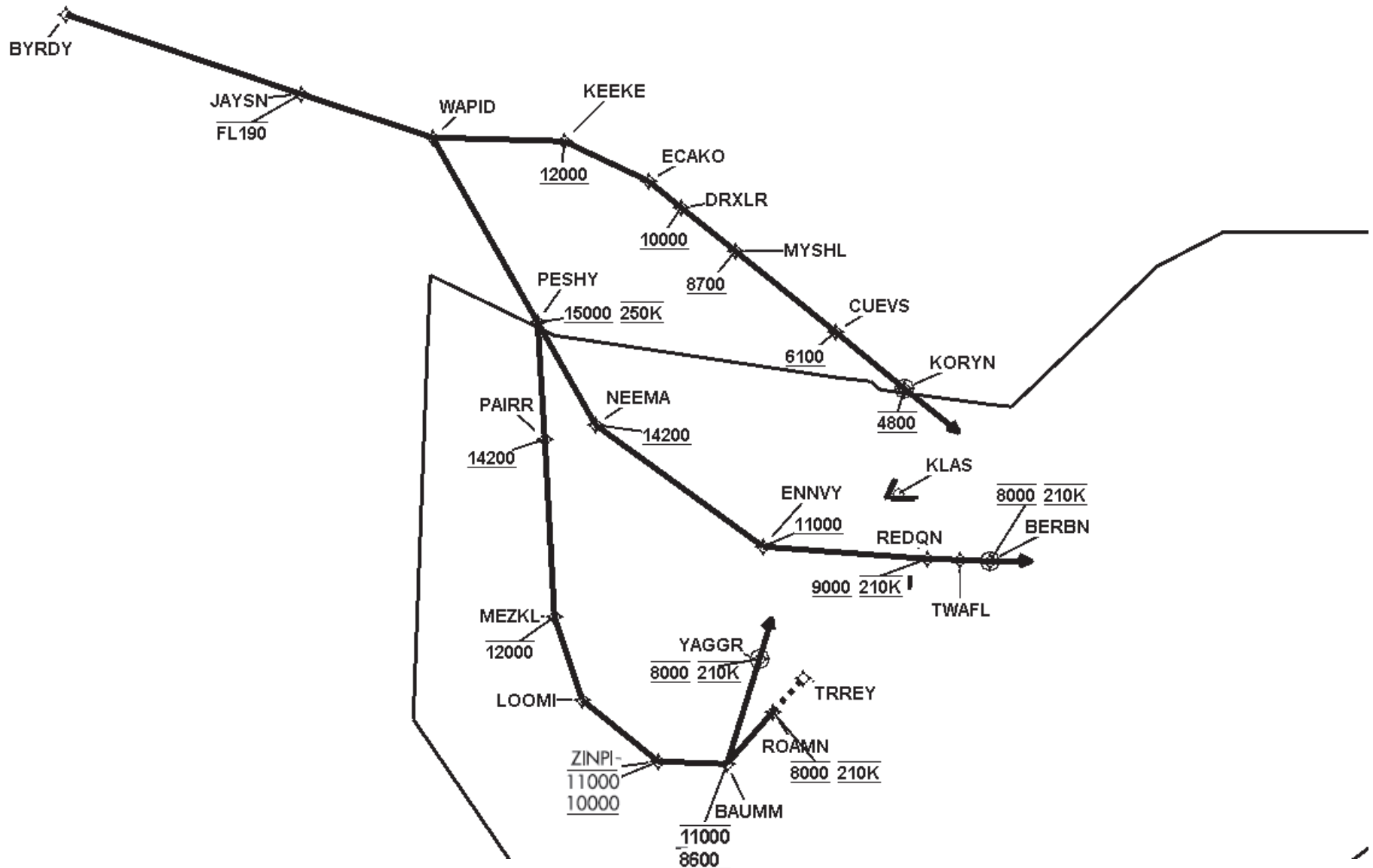
2. LOST COMMS: DELETED "LANDING RUNWAY 19L: AT KORYN PROCEED VISUALLY VIA THE LAST TRACK TO INTERCEPT THE FINAL APPROACH COURSE; IF UNABLE, MAINTAIN 7000 PROCEED TO LAS VORTAC THEN PROCEED TO BLD VORTAC AND EXECUTE ILS OR LOC RWY 26L APPROACH" - REQUIRES A CLIMB. REMOVE PER AFS.

3. LOST COMMS: DELETED INSTRUCTIONS FOR RWYS 1L AND 26L/R - AFS REQUEST; IAW 8260.19I, PARA 4-5-3.

FEDERAL AVIATION ADMINISTRATION
FLIGHT STANDARDS SERVICE
STANDARD TERMINAL ARRIVAL (STAR)

Bearings, headings, courses, tracks and radials are magnetic. Elevations and altitudes are in feet, MSL. Altitudes are minimum altitudes unless otherwise indicated.
Distances are in nautical miles (NM). Graphic depictions attached.

Arrival Name	Number	STAR Computer Code	Superseded Number	Dated	Effective Date
JAYSN (RNAV)	TWO	JAYSN.JAYSN2	ONE	02/25/2021	19MAY2022
Graphic Depiction 1					



FEDERAL AVIATION ADMINISTRATION
FLIGHT STANDARDS SERVICE
STAR (DATA RECORD)

Arrival Name	Number	STAR Computer Code	Superseded Number	Dated	Effective Date
JAYSN (RNAV)	TWO	JAYSN.JAYSN2	ONE	02/25/2021	19MAY2022

FIX/NAVAID	LAT/LONG	C	FO/FB	LEG TYPE	TC	DIST (NM)	ALTITUDE	SPEED	REMARKS
En Route Transition									
BYRDY	363941.35N / 1162402.08W	Y		IF					BYRDY.JAYSN2
JAYSN	363353.41N / 1160247.26W	Y	FB	TF	108.60	18.06	AT/BELOW FL190		
Common Route									
JAYSN	363353.41N / 1160247.26W	Y		IF			AT/BELOW FL190		JAYSN.JAYSN2
WAPID	363041.89N / 1155101.55W	Y	FB	TF	108.53	10.00			
Runway Transition									
WAPID	363041.89N / 1155101.55W	Y		IF					
PESHY	361718.07N / 1154133.83W	Y	FB	TF	150.23	15.41	AT/ABOVE 15000	AT 250K	
PAIRR	360848.24N / 1154056.43W	Y	FB	TF	176.60	08.50	AT/ABOVE 14200		
MEZKL	355551.36N / 1153959.70W	Y	FB	TF	176.60	12.95	AT/BELOW 12000		
LOOMI	354949.76N / 1153732.46W	Y	FB	TF	161.65	06.34			
ZINPI	354520.49N / 1153043.57W	Y	FB	TF	128.92	07.13	10000B11000		
BAUMM	354510.45N / 1152426.79W	Y	FB	TF	091.84	05.11	8600B11000		
ROAMN	354857.47N / 1152021.90W	Y	FB	TF	041.29	05.03	AT 8000	AT 210K	
KLAS:RWY 1L,RWY 1R									
Runway Transition									
WAPID	363041.89N / 1155101.55W	Y		IF					
PESHY	361718.07N / 1154133.83W	Y	FB	TF	150.23	15.41	AT/ABOVE 15000	AT 250K	
PAIRR	360848.24N / 1154056.43W	Y	FB	TF	176.60	08.50	AT/ABOVE 14200		
MEZKL	355551.36N / 1153959.70W	Y	FB	TF	176.60	12.95	AT/BELOW 12000		
LOOMI	354949.76N / 1153732.46W	Y	FB	TF	161.65	06.34			
ZINPI	354520.49N / 1153043.57W	Y	FB	TF	128.92	07.13	10000B11000		
BAUMM	354510.45N / 1152426.79W	Y	FB	TF	091.84	05.11	8600B11000		



FEDERAL AVIATION ADMINISTRATION
FLIGHT STANDARDS SERVICE
STAR (DATA RECORD)

Arrival Name	Number	STAR Computer Code	Superseded Number	Dated	Effective Date
JAYSN (RNAV)	TWO	JAYSN.JAYSN2	ONE	02/25/2021	19MAY2022

FIX/NAVAID	LAT/LONG	C	FO/FB	LEG TYPE	TC	DIST (NM)	ALTITUDE	SPEED	REMARKS
YAGGR	355248.54N / 1152131.70W	Y	FO	TF	017.28	07.98	AT 8000	AT 210K	
KLAS:RWY 8L,RWY 8R				FM	016.00				

Runway Transition									
WAPID	363041.89N / 1155101.55W	Y		IF					
KEEKE	363026.21N / 1153911.55W	Y	FB	TF	091.51	09.54	AT/ABOVE 12000		
ECAKO	362735.74N / 1153135.85W	Y	FB	TF	114.82	06.75			
DRXLR	362539.64N / 1152836.27W	Y	FB	TF	128.65	03.09	AT/ABOVE 10000		
MYSHL	362228.74N / 1152343.77W	Y	FB	TF	128.89	05.06	AT/ABOVE 8700		
CUEVS	361637.22N / 1151446.98W	Y	FB	TF	128.94	09.30	AT/ABOVE 6100		
KORYN	361229.24N / 1150829.72W	Y	FO	TF	129.03	06.55	AT 4800		
KLAS:RWY 19L,RWY 19R				FM	129.03				

Runway Transition									
WAPID	363041.89N / 1155101.55W	Y		IF					
PESHY	361718.07N / 1154133.83W	Y	FB	TF	150.23	15.41	AT/ABOVE 15000	AT 250K	
NEEMA	360949.65N / 1153617.14W	Y	FB	TF	150.20	08.60	AT/ABOVE 14200		
ENNVY	360058.51N / 1152114.95W	Y	FB	TF	125.88	15.06	AT/ABOVE 11000		
REDQN	360008.26N / 1150628.33W	Y	FB	TF	093.92	12.02	AT/ABOVE 9000	AT 210K	
TWAFI	355958.01N / 1150331.31W	Y	FB	TF	094.06	02.40			
BERBN	355957.25N / 1150050.72W	Y	FO	TF	090.32	02.17	AT 8000	AT 210K	
KLAS:RWY 26L,RWY 26R				FM	090.32				

