

FEDERAL AVIATION ADMINISTRATION
FLIGHT STANDARDS SERVICE
STANDARD TERMINAL ARRIVAL (STAR)

Bearings, headings, courses, tracks and radials are magnetic. Elevations and altitudes are in feet, MSL. Altitudes are minimum altitudes unless otherwise indicated.
Ceilings are in feet above airport elevation. Distances are in nautical miles. Visibilities are in statute miles or feet RVR unless otherwise indicated.

Arrival Name	Number	STAR Computer Code	Superseded Number	Dated	Effective Date
FISSK (RNAV)	SIX	FISSK.FISSK6	FIVE	04/20/2023	10 AUG 2023

TRANSITION ROUTES:

Transition Name	Transition Computer Codes	From FIX/NAVAID	To FIX/NAVAID	Course	Distance	MEA	MOCA	MAA	Crossing Altitudes / Fixes
DROSE	DROSE.FISSK6	DROSE	DROSE						
			TROLY	005.00	10.01	3400	2400		
			GOTNE	005.00	16.00	3400	2200		AT/BELOW FL180
			FISSK	290.91	18.25	3400	2200		

ARRIVAL ROUTE DESCRIPTION:

FROM FISSK ON TRACK 302.42/9.61 TO VEECK, THEN ON TRACK 323.21/21.73 TO OZZEY, THEN ON TRACK 321.54/4.76 TO AZUMO, THEN ON TRACK 300.77/7.78 TO CROSS HALIE AT 6000.
LANDING RWY 4R: FROM HALIE ON TRACK 278.27/20.13 TO CROSS OLCYK AT OR ABOVE 4000, THEN ON TRACK 278.27. EXPECT RADAR VECTORS TO FINAL APPROACH COURSE.
LANDING RWY 13C: FROM HALIE ON TRACK 278.55/31.20 TO CROSS TINLY AT OR ABOVE 4000, THEN ON TRACK 278.55. EXPECT RADAR VECTORS TO FINAL APPROACH COURSE.
LANDING RWY 22L: FROM HALIE ON TRACK 343.45/11.90 TO CROSS GERMN AT OR ABOVE 4000, THEN ON TRACK 343.39/3.41 TO LNAME, THEN ON TRACK 339.10/6.29 TO BOCAH, THEN ON TRACK 274.04/4.50 TO CROSS TACTT AT 3000. EXPECT RNAV (RNP/GPS) RWY 22L APPROACH OR RADAR VECTORS TO FINAL APPROACH COURSE.
LANDING RWY 31C: FROM HALIE ON TRACK 295.43/10.76 TO CROSS HAADN AT 6000, THEN ON TRACK 295.31/7.00 TO CROSS HILLS AT 5000 AND AT 240 KIAS. EXPECT ILS OR RNAV (RNP/GPS) RWY 31C APPROACH OR RADAR VECTORS TO FINAL APPROACH COURSE.

PBN REQUIREMENT NOTES:

RNAV 1 - DME/DME/IRU OR GPS

EQUIPMENT REQUIREMENT NOTES:

RADAR REQUIRED

PROCEDURAL DATA NOTES:

NOTE: LANDING RWY 31C: FOR NON-RNP AIRCRAFT, EXPECT RADAR VECTORS TO FINAL APPROACH COURSE.

FIXES AND/OR HOLDING PATTERNS:

CHART HOLDING AT FISSK: HOLD E, RT, 290.91 INBOUND, 8 NM LEGS.
CHART HOLDING AT OZZEY: HOLD SE, LT, 323.21 INBOUND, 8 NM LEGS.
CHART HOLDING AT STASH: HOLD E, RT, 270.00 INBOUND, 10 NM LEGS.

COMMUNICATIONS:

CHART: CHICAGO APPROACH CONTROL.

AIRPORTS SERVED:

AIRPORT ID	CITY	STATE
KMDW	CHICAGO	IL

LOST COMMUNICATIONS PREFERENCES:

RWY 22L: IF APPROACH CLEARANCE NOT RECEIVED BY TACTT, PROCEED INBOUND ON RNAV (GPS) OR RNAV (RNP) RWY 22L ROUTING.

REMARKS:

STASH WP IS STAND-ALONE HOLDING.



FEDERAL AVIATION ADMINISTRATION
FLIGHT STANDARDS SERVICE
STANDARD TERMINAL ARRIVAL (STAR)

Bearings, headings, courses, tracks and radials are magnetic. Elevations and altitudes are in feet, MSL. Altitudes are minimum altitudes unless otherwise indicated.
Ceilings are in feet above airport elevation. Distances are in nautical miles. Visibilities are in statute miles or feet RVR unless otherwise indicated.

Arrival Name	Number	STAR Computer Code	Superseded Number	Dated	Effective Date
FISSK (RNAV)	SIX	FISSK.FISSK6	FIVE	04/20/2023	10 AUG 2023

ADDITIONAL FLIGHT DATA:

DME/DME ASSESSMENT: SAT (RNP 2.0)

MAG VAR = KMDW 04W/2015

CHART AT TACTT TERMINUS: KMDW LDG RWY 22L

CHART AT HILLS TERMINUS: KMDW LDG RWY 31C

CHART AT TINLY TERMINUS: KMDW LDG RWY 13C

CHART AT OLCYK TERMINUS: KMDW LDG RWY 4R

FLIGHT INSPECTED BY:

JAMES ONIEAL

ORGANIZATION:

FPO

DATE:

05/26/2023

Flight Inspected Signature:

*Digitally signed by***ALLAN WILL**

May 26, 2023

DEVELOPED BY:

JOSEPH BOCIK, AIRSPACE/PROCEDURES MANAGER

CHICAGO ARTCC

04/24/2023

Developed By Signature:

*Digitally signed by***RAKE MCGRAW**~~May 08, 2023~~*Digitally signed by***RAKE MCGRAW**

May 08, 2023

APPROVED BY:

ALLAN WILL, MANAGER

AJV-A423

Approved By Signature:

CHANGES:

1. ARRIVAL ROUTE 4R: REMOVED EXPECT RNAV (RNP) Y RWY 4R APPROACH, ADDED FM LEG, AND ADDED EXPECT RADAR VECTORS TO FINAL APPROACH COURSE.
2. ARRIVAL ROUTE 13C: REMOVED OLCYK.

REASONS:

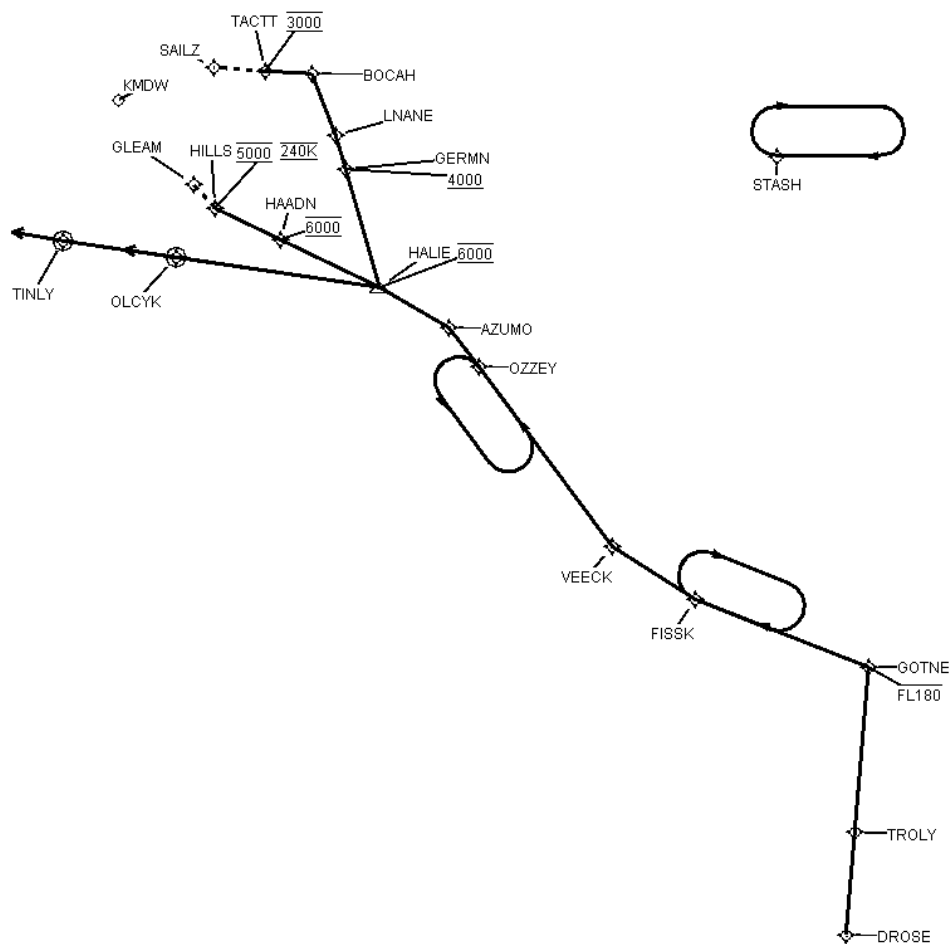
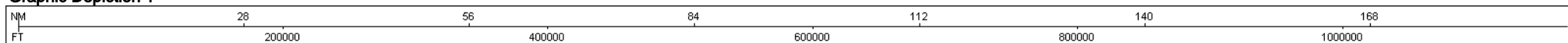
1. PER ATC REQUEST.
2. OLCYK REMOVED TO AVOID VIOLATING 8260.58B 2-2-1.A.(2).



FEDERAL AVIATION ADMINISTRATION
FLIGHT STANDARDS SERVICE
STANDARD TERMINAL ARRIVAL (STAR)

Bearings, headings, courses, tracks and radials are magnetic. Elevations and altitudes are in feet, MSL. Altitudes are minimum altitudes unless otherwise indicated.
Ceilings are in feet above airport elevation. Distances are in nautical miles or feet RVR unless otherwise indicated.

Arrival Name	Number	STAR Computer Code	Superseded Number	Dated	Effective Date
FISSK (RNAV)	SIX	FISSK.FISSK6	FIVE	04/20/2023	10 AUG 2023

Graphic Depiction 1

**FEDERAL AVIATION ADMINISTRATION
FLIGHT STANDARDS SERVICE
STAR (DATA RECORD)**

Arrival Name FISSK (RNAV)		Number SIX		STAR Computer Code FISSK.FISSK6			Superseded Number FIVE			Dated 04/20/2023	Effective Date 10 AUG 2023
FIX/NAVAID	LAT/LONG	C	FO/FB	LEG TYPE	TC	DIST (NM)	ALTITUDE	SPEED	REMARKS		
En Route Transition											
DROSE	403139.41N / 0860328.82W	Y		IF					DROSE.FISSK6		
TROLY	404140.35N / 0860315.09W	Y	FB	TF	001.00	10.01					
GOTNE	405740.58N / 0860252.95W	Y	FB	TF	001.00	16.00	AT/BELOW FL180				
FISSK	410257.00N / 0862558.00W	Y	FB	TF	286.91	18.25					
Common Route											
FISSK	410257.00N / 0862558.00W	Y		IF					FISSK.FISSK6		
VEECK	410731.00N / 0863709.00W	Y	FB	TF	298.42	09.61					
OZZEY	412357.00N / 0865600.60W	Y	FB	TF	319.21	21.73					
AZUMO	412727.94N / 0870017.27W	Y	FB	TF	317.54	04.76					
HALIE	413057.85N / 0870931.95W	Y	FB	TF	296.77	07.78	AT 6000				
Runway Transition											
HALIE	413057.85N / 0870931.95W	Y		IF			AT 6000				
OLCYK	413224.69N / 0873616.06W	Y	FO	TF	274.27	20.13	AT/ABOVE 4000				
KMDW:RWY 4R				FM	274.27						
Runway Transition											
HALIE	413057.85N / 0870931.95W	Y		IF			AT 6000				
TINLY	413319.08N / 0875057.56W	Y	FO	TF	274.55	31.20	AT/ABOVE 4000				
KMDW:RWY 13C				FM	274.55						
Runway Transition											
HALIE	413057.85N / 0870931.95W	Y		IF			AT 6000				
GERMN	414206.60N / 0871506.58W	Y	FB	TF	339.45	11.90	AT/ABOVE 4000				
LNANE	414518.38N / 0871642.92W	Y	FB	TF	339.39	03.41					
BOCAH	415100.78N / 0872015.49W	Y	FB	TF	335.10	06.29					



FEDERAL AVIATION ADMINISTRATION
FLIGHT STANDARDS SERVICE
STAR (DATA RECORD)

Arrival Name FISSK (RNAV)	Number SIX	STAR Computer Code FISSK.FISSK6		Superseded Number FIVE		Dated 04/20/2023	Effective Date 10 AUG 2023		
<u>FIX/NAVAID</u>	<u>LAT/LONG</u>	<u>C</u>	<u>FO/FB</u>	<u>LEG TYPE</u>	<u>TC</u>	<u>DIST (NM)</u>	<u>ALTITUDE</u>	<u>SPEED</u>	<u>REMARKS</u>
TACTT	415100.82N / 0872616.77W	Y	FB	TF	270.04	04.50	AT 3000		
KMDW:RWY 22L									
Runway Transition									
HALIE	413057.85N / 0870931.95W	Y		IF			AT 6000		
HAADN	413453.03N / 0872252.46W	Y	FB	TF	291.43	10.76	AT 6000		
HILLS	413725.40N / 0873134.18W	Y	FB	TF	291.31	07.00	AT 5000	AT 240K	
KMDW:RWY 31C									