

FEDERAL AVIATION ADMINISTRATION
FLIGHT STANDARDS SERVICE
STANDARD TERMINAL ARRIVAL (STAR)

Bearings, headings, courses, tracks and radials are magnetic. Elevations and altitudes are in feet, MSL. Altitudes are minimum altitudes unless otherwise indicated.
Distances are in nautical miles (NM). Graphic depictions attached.

Arrival Name	Number	STAR Computer Code	Superseded Number	Dated	Effective Date
NIIXX (RNAV)	THREE	NIIXX.NIIXX3	TWO	12/31/2020	7 OCT 21

TRANSITION ROUTES:

Transition Name	Transition Computer Codes	From FIX/NAVAID	To FIX/NAVAID	Course	Distance	MEA	MOCA	MAA	Crossing Altitudes / Fixes
HALEN	HALEN.NIIXX3	HALEN	HALEN						
			KOORN	305.05	32.59	FL190			
			IDOLL	304.74	54.27	FL190			
			NIIXX	304.15	28.02	15000	8700		BETWEEN FL190 AND FL220
NARNO	NARNO.NIIXX3	NARNO	NARNO						
			IDOLL	328.52	28.14	FL190			
			NIIXX	304.15	28.02	15000	8700		BETWEEN FL190 AND FL220
ZIGEE	ZIGEE.NIIXX3	ZIGEE	ZIGEE						
			NARNO	328.96	56.25	FL190			
			IDOLL	328.52	28.14	FL190			
			NIIXX	304.15	28.02	15000	8700		BETWEEN FL190 AND FL220

ARRIVAL ROUTE DESCRIPTION:

FROM NIIXX ON TRACK 303.54/15.96 TO CROSS HAGGR BETWEEN 15000 AND FL200 AND AT 250 KIAS.

LANDING RWY 7, 8: FROM HAGGR ON TRACK 321.88/11.94 TO CROSS JPAGE BETWEEN 15000 AND 17000, THEN ON TRACK 312.65/17.07 TO CROSS ROOTZ BETWEEN 13000 AND 15000 AND AT 250 KIAS, THEN ON TRACK 295.28/5.36 TO RPIDS, THEN ON TRACK 263.06/4.74 TO CROSS BBOOK AT 11000 AND AT 210 KIAS, THEN ON TRACK 263.06. EXPECT RADAR VECTORS TO FINAL APPROACH COURSE.

LANDING RWY 16L, 17L/R: FROM HAGGR ON TRACK 321.88/11.94 TO CROSS JPAGE BETWEEN 15000 AND 17000, THEN ON TRACK 325.61/17.32 TO CROSS JAAAM BETWEEN 13000 AND 15000 AND AT 250 KIAS, THEN ON TRACK 337.05/7.20 TO HUDPI, THEN ON TRACK 352.53/5.00 TO CROSS QWIKI AT 11000 AND AT 210 KIAS, THEN ON TRACK 352.53. EXPECT RADAR VECTORS TO FINAL APPROACH COURSE.

LANDING RWY 16R: FROM HAGGR ON TRACK 321.88/11.94 TO CROSS JPAGE BETWEEN 15000 AND 17000, THEN ON TRACK 312.65/17.07 TO CROSS ROOTZ BETWEEN 13000 AND 15000 AND AT 250 KIAS, THEN ON TRACK 295.28/5.36 TO RPIDS, THEN ON TRACK 294.83/10.63 TO RDDVL, THEN ON TRACK 352.51/5.00 TO CROSS CLFFF AT 11000 AND AT 210 KIAS, THEN ON TRACK 352.51. EXPECT RADAR VECTORS TO FINAL APPROACH COURSE.

LANDING RWY 25, 26: FROM HAGGR ON TRACK 316.88/4.50 TO CROSS GEILS AT 14000, THEN ON TRACK 316.88. EXPECT RADAR VECTORS TO FINAL APPROACH COURSE.

LANDING RWY 34L/R: FROM HAGGR ON TRACK 273.67/12.02 TO CROSS BSTON BETWEEN 13000 AND 14000 AND AT 230 KIAS, THEN ON TRACK 273.45/7.14 TO CROSS BOSSS AT 12000 AND AT 210 KIAS. EXPECT ILS OR LOC RWY 34L/R APPROACH.

LANDING RWY 35L/R: FROM HAGGR ON TRACK 273.67/12.02 TO CROSS BSTON BETWEEN 13000 AND 14000 AND AT 230 KIAS, THEN ON TRACK 273.45/7.14 TO CROSS BOSSS AT 12000 AND AT 210 KIAS. EXPECT ILS OR LOC RWY 35L/R APPROACH.

PROCEDURAL DATA NOTES:

NOTE: TURBOJET AIRCRAFT ONLY.

NOTE: TURBOJET AIRCRAFT DESCEND VIA MACH NUMBER UNTIL INTERCEPTING 280 KIAS. MAINTAIN 280 KIAS UNTIL SLOWED BY STAR.

NOTE: DENVER CENTER WILL ISSUE "DESCEND VIA" CLEARANCE AND LANDING DIRECTION.

NOTE: NARNO ENROUTE TRANSITION: DO NOT FILE – TO BE ASSIGNED BY ATC.

NOTE: LANDING NORTH SELECT RWY 35R TRANSITION.

NOTE: LANDING SOUTH SELECT RWY 17R TRANSITION.

NOTE: LANDING EAST SELECT RWY 7 TRANSITION.

NOTE: LANDING WEST SELECT RWY 26 TRANSITION.

NOTE: EXPECT RUNWAY ASSIGNMENT ON INITIAL CONTACT WITH DENVER TRACON.



FEDERAL AVIATION ADMINISTRATION
FLIGHT STANDARDS SERVICE
STANDARD TERMINAL ARRIVAL (STAR)

Bearings, headings, courses, tracks and radials are magnetic. Elevations and altitudes are in feet, MSL. Altitudes are minimum altitudes unless otherwise indicated.
Distances are in nautical miles (NM). Graphic depictions attached.

Arrival Name	Number	STAR Computer Code	Superseded Number	Dated	Effective Date
NIIX (RNAV)	THREE	NIIX.NIIX3	TWO	12/31/2020	7 OCT 21

PBN REQUIREMENT NOTES:

RNAV 1 - DME/DME/IRU OR GPS

EQUIPMENT REQUIREMENT NOTES:

RADAR REQUIRED FOR NON-GPS EQUIPPED AIRCRAFT

FIXES AND/OR HOLDING PATTERNS:

CHART HOLDING AT HAGGR: HOLD SE, RT, 303.54 INBOUND, 10 NM LEGS.

CHART HOLDING AT IDOLL: HOLD SE, LT, 304.74 INBOUND, 11 NM LEGS.

CHART HOLDING AT KOORN: HOLD SE, LT, 305.05 INBOUND, 12 NM LEGS.

CHART LYNKN AND HOLDING AT LYNKN: HOLD SE, RT, 293.84 INBOUND, 12 NM LEGS.

CHART HOLDING AT NARNO: HOLD SE, RT, 328.96 INBOUND, 12 NM LEGS.

CHART HOLDING AT NIIX: HOLD SE, LT, 304.15 INBOUND, 10 NM LEGS.

COMMUNICATIONS:

CHART: DENVER APP CON

CHART: DENVER TOWER

AIRPORTS SERVED:

DENVER INTL, DENVER, CO (KDEN)

LOST COMMUNICATIONS PROCEDURE:

IN THE EVENT OF LOST COMMUNICATIONS PRIOR TO RUNWAY TRANSITION ASSIGNMENT, WHEN DEN IS LANDING SOUTH, EXECUTE THE ILS RWY 17R, WHEN DEN IS LANDING NORTH, EXECUTE THE ILS RWY 35R

REMARKS:

MEA'S FL190 AND ABOVE NEEDED TO MITIGATE CRITICAL DME'S AND INSURE ADEQUATE SIGNAL RECEPTION FOR DME/DME/IRU NAVIGATION.

ADDITIONAL FLIGHT DATA:

DME/DME ASSESSMENT: SAT (RNP 2.0)

REFERENCE MAGNETIC VARIATION = KDEN 08E/2015

CHART AT BOSSS TERMINUS: LDG KDEN RWYS 34L/R AND 35L/R

CHART AT BBOOK TERMINUS: LDG KDEN RWYS 7 AND 8

CHART AT QWIKI TERMINUS: LDG KDEN RWYS 17L/R AND 16L

CHART AT CLFFF TERMINUS: LDG KDEN RWYS 16R

CHART AT GEILS TERMINUS: LDG KDEN RWYS 25 AND 26

FEDERAL AVIATION ADMINISTRATION
FLIGHT STANDARDS SERVICE
STANDARD TERMINAL ARRIVAL (STAR)

Bearings, headings, courses, tracks and radials are magnetic. Elevations and altitudes are in feet, MSL. Altitudes are minimum altitudes unless otherwise indicated.
Distances are in nautical miles (NM). Graphic depictions attached.

Arrival Name	Number	STAR Computer Code	Superseded Number	Dated	Effective Date
NIIX (RNAV)	THREE	NIIX.NIIX3	TWO	12/31/2020	7 OCT 21
<u>FLIGHT INSPECTED BY:</u>					
MATTHEW R BUFORD		FICO	07/27/2021		<i>Digitally signed by</i> DONALD H LANIER
Name		Organization	Date	Signature	Jul 28, 2021
<u>DEVELOPED BY:</u>					
Mark Phipps DEN Metroplex Manager		DENVER ARTCC	4/22/2021		<i>Digitally signed by</i> DONALD H LANIER
Name		Organization	Date	Signature	Jul 28, 2021
<u>APPROVED BY:</u>					
LONNIE EVERHART		AJV-A430			<i>Digitally signed by</i> DONALD H LANIER
Name		Organization	Date	Signature	Jul 28, 2021

CHANGES:

1. RECONFIGURED TRANSITION FOR RWY 25, 26; ADDED ROUTING FOR FIXES HAGGR, GEILS; UPDATED TERMINUS DATA.
2. PROCEDURAL DATA NOTES: CHANGED "NOTE: NARNO ENROUTE TRANSITION IS ATC ASSIGNED ONLY--DO NOT FILE" TO "NOTE: NARNO ENROUTE TRANSITION: DO NOT FILE – TO BE ASSIGNED BY ATC.
3. REFORMATTED RADAR REQUIRED, RNAV 1, DME/DME/IRU OR GPS REQUIRED NOTES TO CURRENT PBN & EQUIPMENT REQUIREMENT NOTES FORMAT.
4. CHANGED RESTRICTION AT NIIX FROM AT OR ABOVE FL190 TO 190B220.
5. ADDED CHART NOTE ABOUT MAINTAINING 280KIAS AND LISTING LANDING DIRECTIONS AND RUNWAYS.

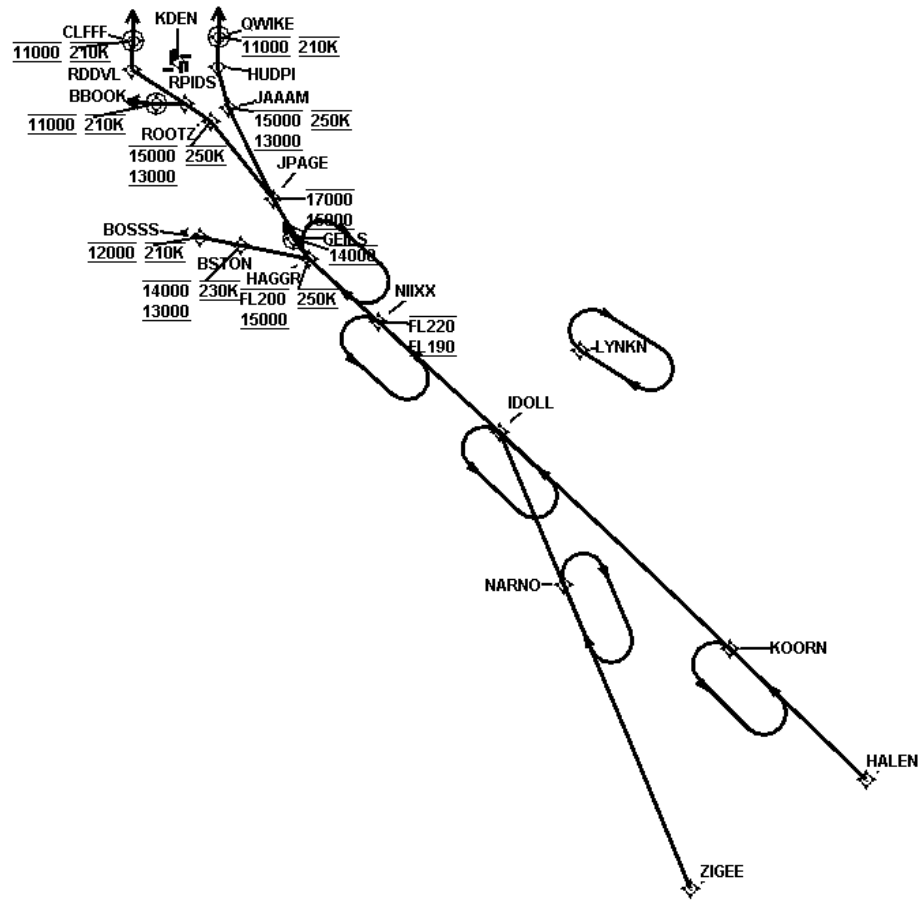
REASONS:

1. REQUIRED FOR AIRCRAFT TO BE IN THE CORRECT POSITION AND ALTITUDE FOR LANDING WEST TO OPTIMIZE CONVERGING LANDING OPERATIONS.
2. CRITERIA – IAW 8260.19I, 4-5-2.
3. CRITERIA – IAW 8260.19I, 4-5-3.
4. ATC REQUIRED FOR TBO COMPLIANCE.
5. ATC REQUIRED FOR TBO COMPLIANCE.

FEDERAL AVIATION ADMINISTRATION
FLIGHT STANDARDS SERVICE
STANDARD TERMINAL ARRIVAL (STAR)

Bearings, headings, courses, tracks and radials are magnetic. Elevations and altitudes are in feet, MSL. Altitudes are minimum altitudes unless otherwise indicated.
Distances are in nautical miles (NM). Graphic depictions attached.

Arrival Name	Number	STAR Computer Code	Superseded Number	Dated	Effective Date
NIIXX (RNAV)	THREE	NIIXX.NIIXX3	TWO	12/31/2020	7 OCT 21
Graphic Depiction 1					



FEDERAL AVIATION ADMINISTRATION
FLIGHT STANDARDS SERVICE
STAR (DATA RECORD)

Arrival Name NIIXX (RNAV)	Number THREE	STAR Computer Code NIIXX.NIIXX3	Superseded Number TWO	Dated 12/31/2020	Effective Date 7 OCT 21
-------------------------------------	------------------------	-------------------------------------------	---------------------------------	----------------------------	-----------------------------------

FIX/NAVAID	LAT/LONG	C	FO/FB	LEG TYPE	TC	DIST (NM)	ALTITUDE	SPEED	REMARKS
En Route Transition									
HALEN	374951.85N / 1020757.15W	Y		IF					HALEN.NIIXX3
KOORN	381204.14N / 1023809.79W	Y	FB	TF	313.05	32.59			
IDOLL	384845.14N / 1032909.11W	Y	FB	TF	312.74	54.27			
NIIXX	390731.50N / 1035550.96W	Y	FB	TF	312.15	28.02	FL190BFL220		
En Route Transition									
NARNO	382255.94N / 1031448.55W	Y		IF					NARNO.NIIXX3
IDOLL	384845.14N / 1032909.11W	Y	FB	TF	336.52	28.14			
NIIXX	390731.50N / 1035550.96W	Y	FB	TF	312.15	28.02	FL190BFL220		
En Route Transition									
ZIGEE	373110.35N / 1024648.58W	Y		IF					ZIGEE.NIIXX3
NARNO	382255.94N / 1031448.55W	Y	FB	TF	336.96	56.25			
IDOLL	384845.14N / 1032909.11W	Y	FB	TF	336.52	28.14			
NIIXX	390731.50N / 1035550.96W	Y	FB	TF	312.15	28.02	FL190BFL220		
Common Route									
NIIXX	390731.50N / 1035550.96W	Y		IF			FL190BFL220		NIIXX.NIIXX3
HAGGR	391805.92N / 1041114.17W	Y	FB	TF	311.54	15.96	15000BFL200	AT 250K	
Runway Transition									
HAGGR	391805.92N / 1041114.17W	Y		IF			15000BFL200	AT 250K	
JPAGE	392825.99N / 1041858.48W	Y	FB	TF	329.88	11.94	15000B17000		
ROOTZ	394138.07N / 1043259.98W	Y	FB	TF	320.65	17.07	13000B15000	AT 250K	
RPIDS	394434.57N / 1043848.54W	Y	FB	TF	303.28	05.36			
BBOOK	394439.67N / 1044456.83W	Y	FO	TF	271.06	04.74	AT 11000	AT 210K	
KDEN:RWY 7,RWY 8				FM	271.06				



FEDERAL AVIATION ADMINISTRATION
FLIGHT STANDARDS SERVICE
STAR (DATA RECORD)

Arrival Name NIIXX (RNAV)	Number THREE		STAR Computer Code NIIXX.NIIXX3		Superseded Number TWO		Dated 12/31/2020		Effective Date 7 OCT 21
FIX/NAVAID	LAT/LONG	C	FO/FB	LEG TYPE	TC	DIST (NM)	ALTITUDE	SPEED	REMARKS
Runway Transition									
HAGGR	391805.92N / 1041114.17W	Y		IF			15000BFL200	AT 250K	
JPAGE	392825.99N / 1041858.48W	Y	FB	TF	329.88	11.94	15000B17000		
JAAAM	394357.46N / 1042857.43W	Y	FB	TF	333.61	17.32	13000B15000	AT 250K	
HUDPI	395055.21N / 1043122.20W	Y	FB	TF	345.05	07.20			
QWIKI	395555.43N / 1043118.56W	Y	FO	TF	000.53	05.00	AT 11000	AT 210K	
KDEN:RWY 16L,RWY 17L,RWY 17R				FM	000.53				
Runway Transition									
HAGGR	391805.92N / 1041114.17W	Y		IF			15000BFL200	AT 250K	
JPAGE	392825.99N / 1041858.48W	Y	FB	TF	329.88	11.94	15000B17000		
ROOTZ	394138.07N / 1043259.98W	Y	FB	TF	320.65	17.07	13000B15000	AT 250K	
RPIDS	394434.57N / 1043848.54W	Y	FB	TF	303.28	05.36			
RDDVL	395019.88N / 1045024.03W	Y	FB	TF	302.83	10.63			
CLFFF	395520.10N / 1045020.55W	Y	FO	TF	000.51	05.00	AT 11000	AT 210K	
KDEN:RWY 16R				FM	000.51				
Runway Transition									
HAGGR	391805.92N / 1041114.17W	Y		IF			15000BFL200	AT 250K	
GEILS	392146.91N / 1041434.45W	Y	FO	TF	324.88	04.50	AT 14000		
KDEN:RWY 25,RWY 26				FM	324.88				
Runway Transition									
HAGGR	391805.92N / 1041114.17W	Y		IF			15000BFL200	AT 250K	
BSTON	392030.89N / 1042624.58W	Y	FB	TF	281.67	12.02	13000B14000	AT 230K	
BOSSS	392155.61N / 1043525.77W	Y	FB	TF	281.45	07.14	AT 12000	AT 210K	
KDEN:RWY 34L,RWY 34R									



FEDERAL AVIATION ADMINISTRATION
FLIGHT STANDARDS SERVICE
STAR (DATA RECORD)

Arrival Name	Number	STAR Computer Code	Superseded Number	Dated	Effective Date
NIIXX (RNAV)	THREE	NIIXX.NIIXX3	TWO	12/31/2020	7 OCT 21

FIX/NAVAID	LAT/LONG	C	FO/FB	LEG TYPE	TC	DIST (NM)	ALTITUDE	SPEED	REMARKS
Runway Transition									
HAGGR	391805.92N / 1041114.17W	Y		IF			15000BFL200	AT 250K	
BSTON	392030.89N / 1042624.58W	Y	FB	TF	281.67	12.02	13000B14000	AT 230K	
BOSSS	392155.61N / 1043525.77W	Y	FB	TF	281.45	07.14	AT 12000	AT 210K	
KDEN:RWY 35L,RWY 35R									

