

FEDERAL AVIATION ADMINISTRATION
FLIGHT STANDARDS SERVICE
STANDARD TERMINAL ARRIVAL (STAR)

Bearings, headings, courses, tracks and radials are magnetic. Elevations and altitudes are in feet, MSL. Altitudes are minimum altitudes unless otherwise indicated.
Ceilings are in feet above airport elevation. Distances are in nautical miles. Visibilities are in statute miles or feet RVR unless otherwise indicated.

Arrival Name	Number	STAR Computer Code	Superseded Number	Dated	Effective Date
CONDR (RNAV)	FOUR	CONDR.CONDR4	THREE	02/01/2018	31 OCT 2024

TRANSITION ROUTES:

Transition Name	Transition Computer Codes	From FIX/NAVAID	To FIX/NAVAID	Course	Distance	MEA	MOCA	MAA	Crossing Altitudes / Fixes
EVLYN	EVLYN.CONDR4	EVLYN	EVLYN						AT/ABOVE 14000
			CONDR	095.43	19.00	6000	1800		AT/BELOW 10000
LITTR	LITTR.CONDR4	LITTR	LITTR						
			JOMAT	061.36	42.99	8000	2100		AT/ABOVE 16000
			EVLYN	061.79	12.55	8000	1800		AT/ABOVE 14000
			CONDR	095.43	19.00	6000	1800		AT/BELOW 10000
YRBRO	YRBRO.CONDR4	YRBRO	YRBRO						
			WUKER	094.80	35.82	15000	2000		AT/ABOVE 16000
			EVLYN	095.22	18.00	8000	1800		AT/ABOVE 14000
			CONDR	095.43	19.00	6000	1800		AT/BELOW 10000

ARRIVAL ROUTE DESCRIPTION:

FROM CONDR ON TRACK 095.65/13.00 TO CROSS JFRED AT 6000 AND AT 210 KIAS, THEN ON TRACK 095.65. EXPECT RADAR VECTORS TO FINAL APPROACH COURSE.

PBN REQUIREMENT NOTES:

RNAV 1 - DME/DME/IRU OR GPS

EQUIPMENT REQUIREMENT NOTES:

RADAR REQUIRED

PROCEDURAL DATA NOTES:

NOTE: JET AIRCRAFT ONLY

NOTE: DO NOT FILE - TO BE ASSIGNED BY ATC.

FIXES AND/OR HOLDING PATTERNS:

CHART HOLDING AT WUKER: HOLD W, LT, 095.22 INBOUND, 15 NM LEGS.

CHART: BUDEE

COMMUNICATIONS:

CHART: MEMPHIS APP CONTROL

AIRPORTS SERVED:

AIRPORT ID
MEM

CITY
MEMPHIS

STATE
TN

LOST COMMUNICATIONS PREFERENCES:

FEDERAL AVIATION ADMINISTRATION
FLIGHT STANDARDS SERVICE
STANDARD TERMINAL ARRIVAL (STAR)

Bearings, headings, courses, tracks and radials are magnetic. Elevations and altitudes are in feet, MSL. Altitudes are minimum altitudes unless otherwise indicated.
Ceilings are in feet above airport elevation. Distances are in nautical miles. Visibilities are in statute miles or feet RVR unless otherwise indicated.

Arrival Name	Number	STAR Computer Code	Superseded Number	Dated	Effective Date
CONDR (RNAV)	FOUR	CONDR.CONDR4	THREE	02/01/2018	31 OCT 2024

REMARKS:

THE ENVIRONMENTAL REVIEW UNDER ORDER 1050.1 (LATEST EDITION) AND THE NOISE SCREENING HAVE BEEN ACCOMPLISHED.

ADDITIONAL FLIGHT DATA:

DME/DME ASSESSMENT: SAT (RNP 2.0)
MAG VAR: KMEM 01W/2020
CHART AT JFRED TERMINUS: LDG KMEM

FLIGHT INSPECTED BY:

RUSSELL ROSLEWSKI

ORGANIZATION:

FPO

DATE:

08/07/2024

Flight Inspected Signature:

Digitally signed by

ROBERT G HAMILTON

Aug 09, 2024

Digitally signed by

ROBERT G HAMILTON

Aug 09, 2024

DEVELOPED BY:

Joey Tinsley, ESC PBN CO-LEAD

NATCA

10/19/2023

Developed By Signature:

Digitally signed by

ROBERT G HAMILTON

Aug 09, 2024

APPROVED BY:

BEV BORDY

AJV-A430

Approved By Signature:

CHANGES:

1. REPLACED LITTLE ROCK VORTAC WITH LITTR WP.
2. ADDED ALTITUDE RESTRICTION TO WUKER AT OR ABOVE 16000.
3. ADDED SPEED RESTRICTION OF 270 KIAS TO WUKER AND JOMAT.
4. AMENDED ALTITUDE RESTRICTION AT EVLYN FROM: AT 14000 TO AT OR ABOVE 14000.
5. AMENDED ALTITUDE RESTRICTION AT CONDR FROM: BETWEEN 7000 AND 10000 TO: AT OR BELOW 10000.
6. CHANGED PROCEDURAL DATA NOTE TURBOJET AIRCRAFT ONLY TO JET AIRCRAFT ONLY.
7. CHANGED CHART NOTE: "ASSIGNED BY ATC ONLY" TO "DO NOT FILE - TO BE ASSIGNED BY ATC".
8. LOWERED MEAs ON EN ROUTE TRANSITIONS EVLYN TO CONDR FROM 7000 TO 6000, JOMAT TO EVLYN FROM 10000 TO 8000, YRBRO TO WUKLER FROM FL180 TO 15000, WUKER TO EVLYN FROM 10000 TO 8000.
9. REPLACED PROCEDURAL DATA NOTES DME/DME/IRU OR GPS REQUIRED AND RNAV 1 WITH PBN REQUIREMENT NOTE RNAV 1 - DME/DME/IRU OR GPS.
10. ADDED MOCA DATA.
11. ADDED TERMINUS INFO TO ADDITIONAL FLIGHT DATA.
12. REMOVED RECOMMENDED NAVAID FROM 17.2.
13. REMOVED AIRPORT NAME AND K FROM 3 LETTER IDENT IN AIRPORTS SERVED.

REASONS:

1. LITTLE ROCK VORTAC DECOMMISSION, LITTLE ROCK DME RELOCATION.
- 2 - 5. ATC REQUEST.
6. COMPLIANCE FAAO 8260.19J
7. COMPLIANCE FAAO 8260.19J
8. MINIMUM DME/DME/IRU COVERAGE.

FEDERAL AVIATION ADMINISTRATION
FLIGHT STANDARDS SERVICE
STANDARD TERMINAL ARRIVAL (STAR)

Bearings, headings, courses, tracks and radials are magnetic. Elevations and altitudes are in feet, MSL. Altitudes are minimum altitudes unless otherwise indicated.
Ceilings are in feet above airport elevation. Distances are in nautical miles. Visibilities are in statute miles or feet RVR unless otherwise indicated.

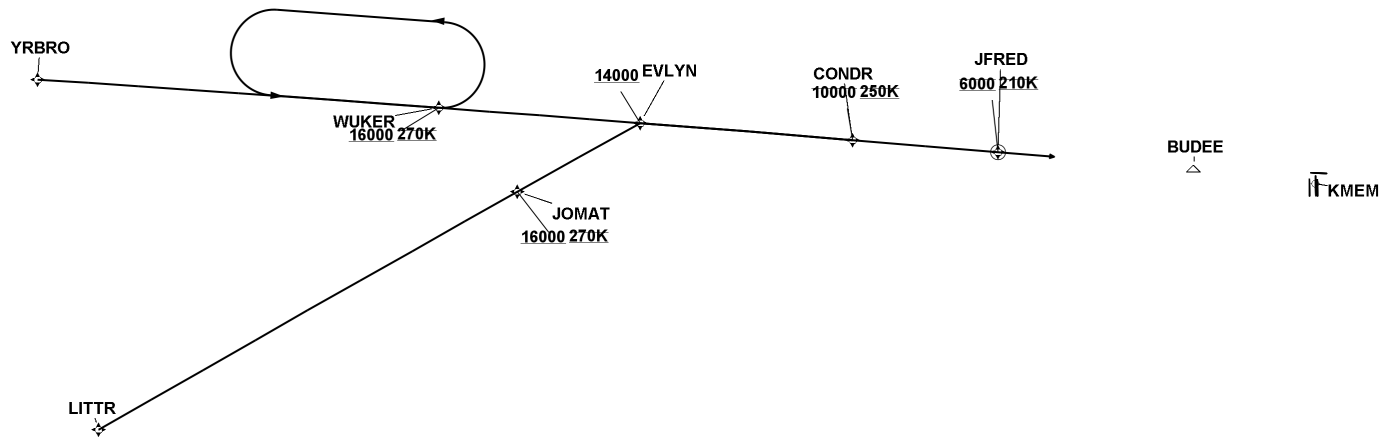
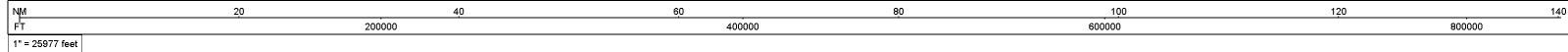
Arrival Name	Number	STAR Computer Code	Superseded Number	Dated	Effective Date
CONDR (RNAV)	FOUR	CONDR.CONDR4	THREE	02/01/2018	31 OCT 2024
9. REQUIRED TO ANNOTATE PBN REQUIREMENTS IAW 8260.46J 2-1-1.f.6.					
10. REQUIRED FOR TRANSITION ROUTE SEGMENTS.					
11. REQUIRED IAW 8260.19J PARA 4-5-2.h.2.					
12-13. CURRENT DOCUMENTATION STANDARDS.					



FEDERAL AVIATION ADMINISTRATION
FLIGHT STANDARDS SERVICE
STANDARD TERMINAL ARRIVAL (STAR)

Bearings, headings, courses, tracks and radials are magnetic. Elevations and altitudes are in feet, MSL. Altitudes are minimum altitudes unless otherwise indicated.
Ceilings are in feet above airport elevation. Distances are in nautical miles. Visibilities are in statute miles or feet RVR unless otherwise indicated.

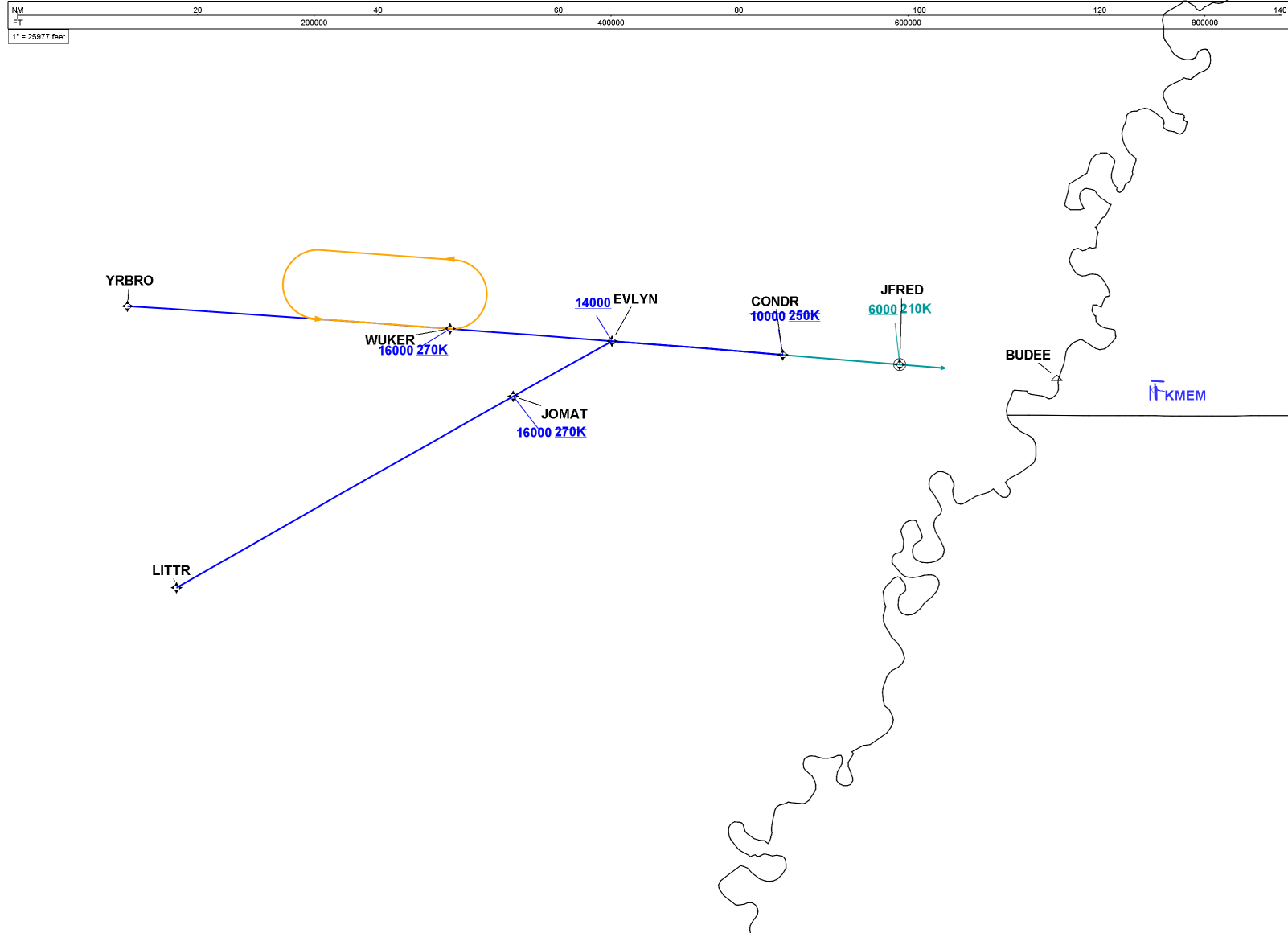
Arrival Name	Number	STAR Computer Code	Superseded Number	Dated	Effective Date
CONDR (RNAV)	FOUR	CONDR.CONDR4	THREE	02/01/2018	31 OCT 2024
Graphic Depiction 1					



FEDERAL AVIATION ADMINISTRATION
FLIGHT STANDARDS SERVICE
STANDARD TERMINAL ARRIVAL (STAR)

Bearings, headings, courses, tracks and radials are magnetic. Elevations and altitudes are in feet, MSL. Altitudes are minimum altitudes unless otherwise indicated.
Ceilings are in feet above airport elevation. Distances are in nautical miles. Visibilities are in statute miles or feet RVR unless otherwise indicated.

Arrival Name	Number	STAR Computer Code	Superseded Number	Dated	Effective Date
CONDR (RNAV)	FOUR	CONDR.CONDR4	THREE	02/01/2018	31 OCT 2024
Graphic Depiction 2					



FEDERAL AVIATION ADMINISTRATION
FLIGHT STANDARDS SERVICE
STAR (DATA RECORD)

Arrival Name CONDR (RNAV)	Number FOUR	STAR Computer Code CONDR.CONDR4			Superseded Number THREE		Dated 02/01/2018	Effective Date 31 OCT 2024	
<u>FIX/NAVAID</u>	<u>LAT/LONG</u>	<u>C</u>	<u>FO/FB</u>	<u>LEG TYPE</u>	<u>TC</u>	<u>DIST (NM)</u>	<u>ALTITUDE</u>	<u>SPEED</u>	<u>REMARKS</u>
En Route Transition									
EVLYN	350756.48N / 0911157.83W	Y		IF			AT/ABOVE 14000		EVLYN.CONDR4
CONDR	350626.05N / 0904852.51W	Y	FB	TF	094.43	19.00	AT/BELOW 10000	AT 250K	
En Route Transition									
LITTR	344039.90N / 0921049.26W	Y		IF					LITTR.CONDR4
JOMAT	350149.14N / 0912519.31W	Y	FB	TF	060.36	42.99	AT/ABOVE 16000	AT 270K	
EVLYN	350756.48N / 0911157.83W	Y	FB	TF	060.79	12.55	AT/ABOVE 14000		
CONDR	350626.05N / 0904852.51W	Y	FB	TF	094.43	19.00	AT/BELOW 10000	AT 250K	
En Route Transition									
YRBRO	351148.73N / 0921726.63W	Y		IF					YRBRO.CONDR4
WUKER	350918.08N / 0913351.01W	Y	FB	TF	093.80	35.82	AT/ABOVE 16000	AT 270K	
EVLYN	350756.48N / 0911157.83W	Y	FB	TF	094.22	18.00	AT/ABOVE 14000		
CONDR	350626.05N / 0904852.51W	Y	FB	TF	094.43	19.00	AT/BELOW 10000	AT 250K	
Common Route									
CONDR	350626.05N / 0904852.51W	Y		IF			AT/BELOW 10000	AT 250K	CONDR.CONDR4
JFRED	350521.64N / 0903305.16W	Y	FO	TF	094.65	13.00	AT 6000	AT 210K	
KMEM				FM	094.65				