

FEDERAL AVIATION ADMINISTRATION
 FLIGHT STANDARDS SERVICE
 STANDARD TERMINAL ARRIVAL (STAR)

Bearings, headings, courses, tracks and radials are magnetic. Elevations and altitudes are in feet, MSL. Altitudes are minimum altitudes unless otherwise indicated. Distances are in nautical miles (NM). Graphic depictions attached.

Arrival Name MAZIE (RNAV)	Number THREE	STAR Computer Code MAZIE.MAZIE3	Superseded Number TWO	Dated 03/07/2013	Effective Date 05 NOV 2020
-------------------------------------	------------------------	---	---------------------------------	----------------------------	--------------------------------------

TRANSITION ROUTES:

Transition Name	Transition Computer Codes	From FIX/NAVAID	To FIX/NAVAID	Course	Distance	MEA	MOCA	MAA	Crossing Altitudes / Fixes
SHLBK	SHLBK.MAZIE3	SHLBK	SHLBK						
			LOUIE	033.10	17.64	10000	1600		AT 13000
			BACKY	034.69	26.24	10000	1600		
			BUZIE	033.56	36.55	6000	1500		
			JAIKE	047.31	15.05	6000	1700		AT 12000
			ILENE	047.42	26.40	3000	2000		AT 12000
			WACKI	047.55	07.70	3000	1700		AT 11000
			MAZIE	047.64	05.30	3000	1900		
SWANN	SWANN.MAZIE3	SWANN	SWANN						
			GATBY	054.29	08.89	10000	1500		
			RAZER	048.56	07.10	10000	1500		
			BUZIE	048.21	16.85	6000	1500		
			JAIKE	047.31	15.05	6000	1700		AT 12000
			ILENE	047.42	26.40	3000	2000		AT 12000
			WACKI	047.55	07.70	3000	1700		AT 11000
			MAZIE	047.64	05.30	3000	1900		

ARRIVAL ROUTE DESCRIPTION:

LANDING ALL AIRPORTS: FROM MAZIE ON TRACK 059.04/7.16 TO CROSS REGLE AT 7000, THEN ON TRACK 059.08/12.00 TO GNNZO, THEN ON TRACK 059.08. EXPECT RADAR VECTORS TO FINAL APPROACH COURSE.

PROCEDURAL DATA NOTES:

- NOTE: RADAR REQUIRED
- NOTE: RNAV 1
- NOTE: DME/DME/IRU OR GPS REQUIRED
- NOTE: TURBOPROP AIRCRAFT ONLY

FIXES AND/OR HOLDING PATTERNS:

- CHART HOLDING AT RAZER: SW, RT, 048.56 INBOUND, 6 NM LEGS.
- CHART HOLDING AT MAZIE: SW, LT, 059.01 INBOUND, 4 NM LEGS.
- CHART HOLDING AT BACKY: SW, RT, 036.00 INBOUND, 7 NM LEGS.
- CHART STAND-ALONE WAYPOINT: HUNNR.
- CHART SBJ VOR/DME.

**This is a corrected copy of the procedure published in NFDD 180.
 ** See page 4 for details. ****



FEDERAL AVIATION ADMINISTRATION
 FLIGHT STANDARDS SERVICE
 STANDARD TERMINAL ARRIVAL (STAR)

Bearings, headings, courses, tracks and radials are magnetic. Elevations and altitudes are in feet, MSL. Altitudes are minimum altitudes unless otherwise indicated. Distances are in nautical miles (NM). Graphic depictions attached.

Arrival Name	Number	STAR Computer Code	Superseded Number	Dated	Effective Date
MAZIE (RNAV)	THREE	MAZIE.MAZIE3	TWO	03/07/2013	05 NOV 2020

COMMUNICATIONS:

POTOMAC APP CON.
 PHILADELPHIA APP CON.
 NEW YORK APP CON.
 TETERBORO ATIS.
 MORRISTOWN MUNI ATIS.
 ESSEX COUNTY ATIS.

AIRPORTS SERVED:

CENTRAL JERSEY RGNL, MANVILLE, NJ (47N)
 ESSEX COUNTY, CALDWELL, NJ (KCDW)
 LINCOLN PARK, LINCOLN PARK, NJ (N07)
 LINDEN, LINDEN, NJ (KLDJ)
 MORRISTOWN MUNI, MORRISTOWN, NJ (KMMU)
 SOMERSET, SOMERVILLE, NJ (KSMQ)
 TETERBORO, TETERBORO, NJ (KTEB)

LOST COMMUNICATIONS PROCEDURE:

AFTER REGLE AT 7000 FEET, PROCEED DIRECT GNNZO, CROSS GNNZO AT 3000 FEET, PROCEED DIRECT SBJ VOR/DME, THEN PROCEED WITH APPROACH.

REMARKS:

DO NOT CHART MOCAS.

ADDITIONAL FLIGHT DATA:

DME/DME ASSESSMENT: SAT (RNP 2.0)
 MAG VAR: KTEB 12W/1980
 CHART AT GNNZO TERMINUS: LDG KTEB, 47N, KLDJ, KCDW, KMMU, N07 AND KSMQ
 SHOW LOST COMMUNICATIONS AS TEXT ONLY - DO NOT GRAPHICALLY DEPICT LOST COMMUNICATIONS.



FEDERAL AVIATION ADMINISTRATION
 FLIGHT STANDARDS SERVICE
 STANDARD TERMINAL ARRIVAL (STAR)

Bearings, headings, courses, tracks and radials are magnetic. Elevations and altitudes are in feet, MSL. Altitudes are minimum altitudes unless otherwise indicated. Distances are in nautical miles (NM). Graphic depictions attached.

Arrival Name	Number	STAR Computer Code	Superseded Number	Dated	Effective Date
MAZIE (RNAV)	THREE	MAZIE.MAZIE3	TWO	03/07/2013	05 NOV 2020

FLIGHT INSPECTED BY:

Name	Organization	Date	Signature
------	--------------	------	-----------

DEVELOPED BY:

Joey Tinsley Name	FAA Eastern PBN Co-Leads Organization	1/29/2020 Date	Signature
----------------------	--	-------------------	-----------

APPROVED BY:

PAT MULQEEN, MANAGER Name	AJV-A440 Organization	Date	Signature
------------------------------	--------------------------	------	-----------

CHANGES:

1. Deleted PXT En Route Transition.
2. Added SHLBK En Route Transition.
3. Moved the GATBY junction east from GATBY to BUZIE.
4. Amended Common Route from "MAZIE SIXIE SBJ" to "MAZIE REGLE GNNZO".
5. Moved REGLE 0.16 NM Northeast.
6. Amended VM Leg heading 040.00 to FM Leg track 059.08.
7. Added HUNNR stand-alone waypoint.
8. Removed NAVAIDs PXT and SBJ, Fix SIXIE.
9. Deleted ZENNS and WANES stand-alone waypoints.
10. Added waypoints BACKY and holding, SHLBK, GNNZO and REGLE.
11. Added (N07) Licoln Park to the airports served.
12. Amended holding at MAZIE from 10NM to 4NM legs, course inbound changed from 047.64 to 059.01.
13. Removed note: CROSS SWANN AT OR BELOW 13000.
14. Changed note from Turboprops Only to Turboprop Aircraft Only.
15. Removed MEAs from Common Route.
16. Updated MEAs for the SWANN Transition.
17. Added Lost Communications Procedure.

REASONS:

- 1-2. VOR MON Decommissioning.
- 3-4. Mitigate safety issue and consolidate MAZIE and JAIKE STARs over the common points.
5. Criteria, resolve Leg Length issue.
6. ATC request, safety issue and traffic flow.
- 7-9. ATC request.
10. Design, VOR MON support.



FEDERAL AVIATION ADMINISTRATION
 FLIGHT STANDARDS SERVICE
 STANDARD TERMINAL ARRIVAL (STAR)

Bearings, headings, courses, tracks and radials are magnetic. Elevations and altitudes are in feet, MSL. Altitudes are minimum altitudes unless otherwise indicated.
 Distances are in nautical miles (NM). Graphic depictions attached.

Arrival Name	Number	STAR Computer Code	Superseded Number	Dated	Effective Date
MAZIE (RNAV)	THREE	MAZIE.MAZIE3	TWO	03/07/2013	05 NOV 2020
11-14. ATC request, Datacom tie-in. 15. Change in criteria. 16. New obstacle evaluation. 17. ATC request.					

09/17/2020: THIS IS A CORRECTED COPY OF THE FORM APPROVED ON 09/11/2020.

1. COMMUNICATIONS: CHANGED WASHINGTON CENTER TO POTOMAC APP CON.

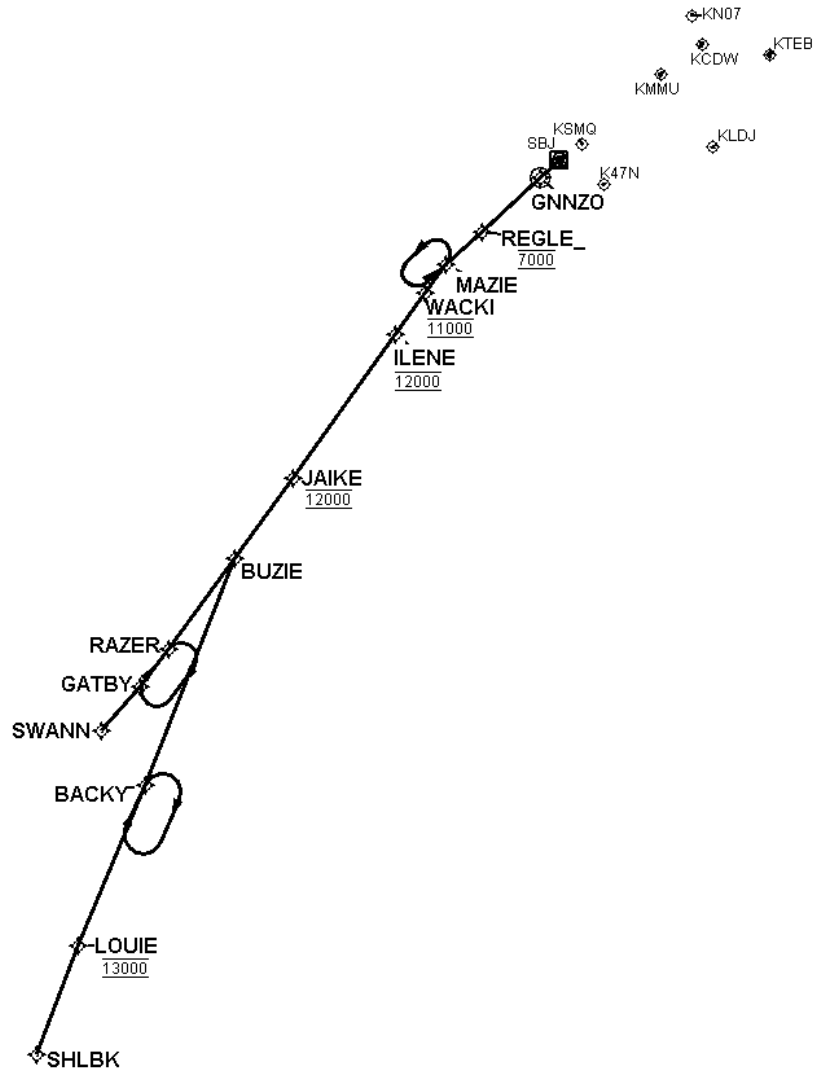


FEDERAL AVIATION ADMINISTRATION
 FLIGHT STANDARDS SERVICE
 STANDARD TERMINAL ARRIVAL (STAR)

Bearings, headings, courses, tracks and radials are magnetic. Elevations and altitudes are in feet, MSL. Altitudes are minimum altitudes unless otherwise indicated. Distances are in nautical miles (NM). Graphic depictions attached.

Arrival Name	Number	STAR Computer Code	Superseded Number	Dated	Effective Date
MAZIE (RNAV)	THREE	MAZIE.MAZIE3	TWO	03/07/2013	

Graphic Depiction 1

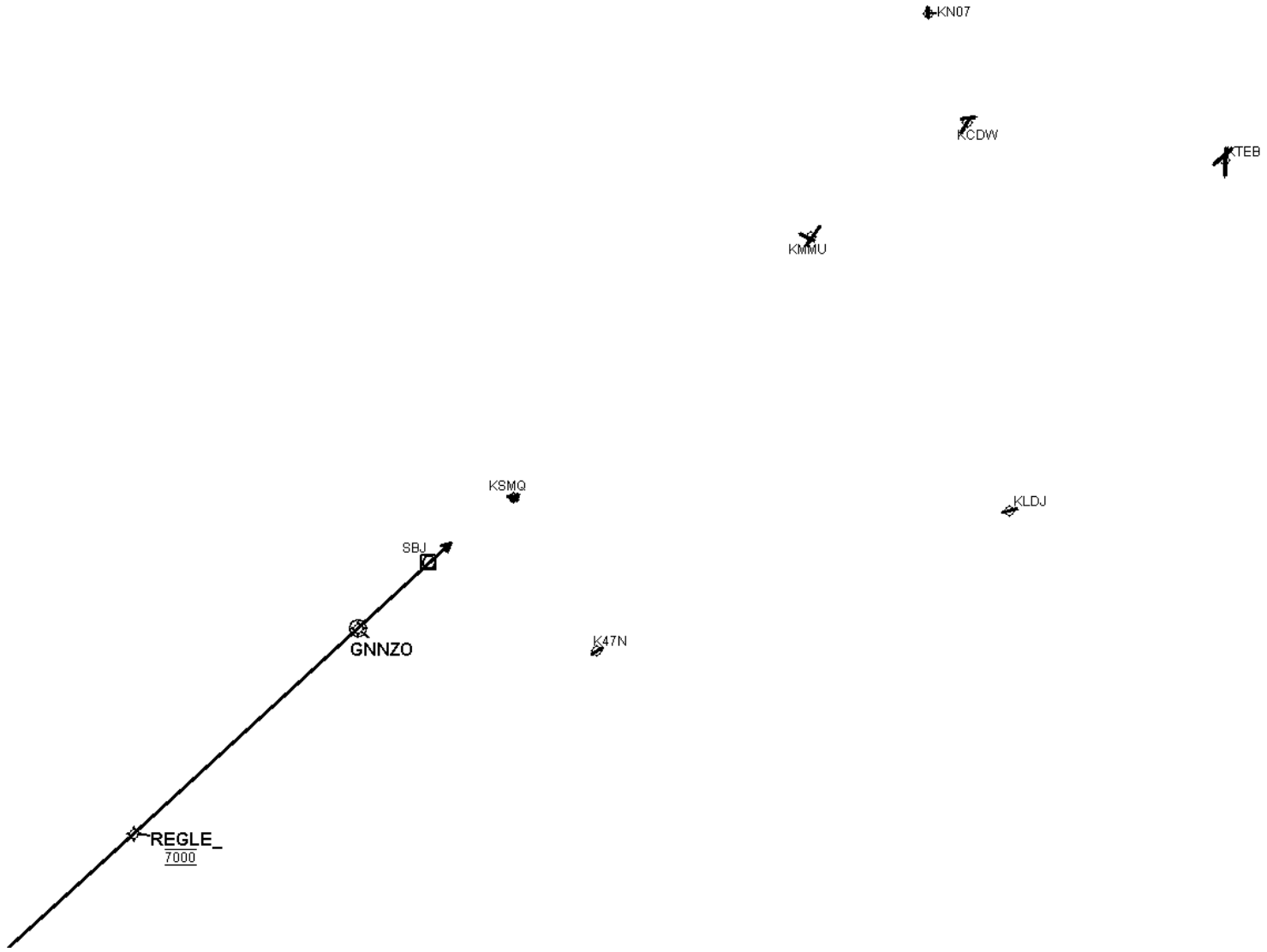


FEDERAL AVIATION ADMINISTRATION
FLIGHT STANDARDS SERVICE
STANDARD TERMINAL ARRIVAL (STAR)

Bearings, headings, courses, tracks and radials are magnetic. Elevations and altitudes are in feet, MSL. Altitudes are minimum altitudes unless otherwise indicated.
Distances are in nautical miles (NM). Graphic depictions attached.

Arrival Name	Number	STAR Computer Code	Superseded Number	Dated	Effective Date
MAZIE (RNAV)	THREE	MAZIE.MAZIE3	TWO	03/07/2013	

Graphic Depiction 2

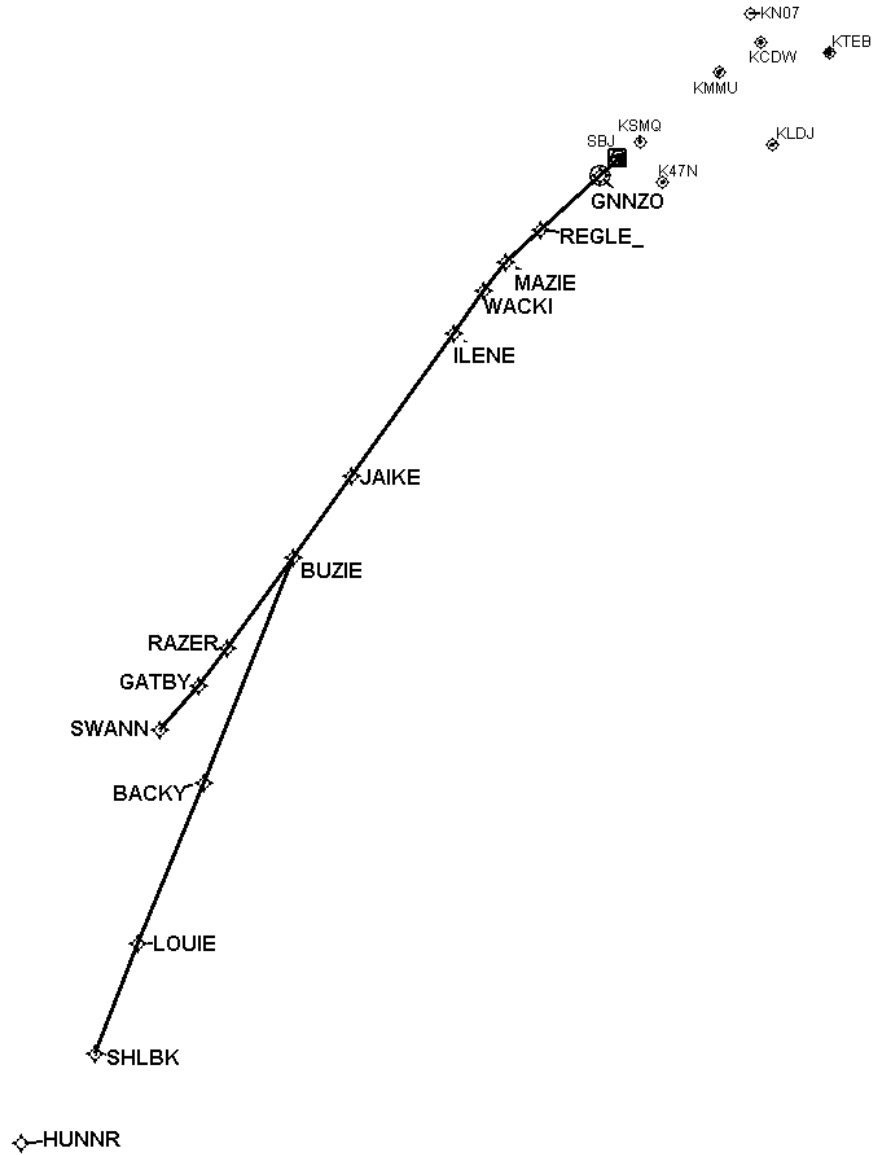


FEDERAL AVIATION ADMINISTRATION
FLIGHT STANDARDS SERVICE
STANDARD TERMINAL ARRIVAL (STAR)

Bearings, headings, courses, tracks and radials are magnetic. Elevations and altitudes are in feet, MSL. Altitudes are minimum altitudes unless otherwise indicated.
Distances are in nautical miles (NM). Graphic depictions attached.

Arrival Name	Number	STAR Computer Code	Superseded Number	Dated	Effective Date
MAZIE (RNAV)	THREE	MAZIE.MAZIE3	TWO	03/07/2013	

Graphic Depiction 3



FEDERAL AVIATION ADMINISTRATION
 FLIGHT STANDARDS SERVICE
 STAR (DATA RECORD)

Arrival Name MAZIE (RNAV)	Number THREE	STAR Computer Code MAZIE.MAZIE3	Superseded Number TWO	Dated 03/07/2013	Effective Date 05 NOV 2020
-------------------------------------	------------------------	---	---------------------------------	----------------------------	--------------------------------------

FIX/NAVAID	LAT/LONG	C	FO/FB	LEG TYPE	TC	DIST (NM)	ALTITUDE	SPEED	REMARKS
En Route Transition									
SHLBK	382016.21N / 0762610.51W	Y		IF					SHLBK.MAZIE3
LOUIE	383644.33N / 0761804.37W	Y	FB	TF	021.10	17.64	AT 13000		
BACKY	390057.71N / 0760504.92W	Y	FB	TF	022.69	26.24			
BUZIE	393457.93N / 0754742.45W	Y	FB	TF	021.56	36.55			
JAIKE	394714.76N / 0753625.53W	Y	FB	TF	035.31	15.05	AT 12000		
ILENE	400845.09N / 0751628.27W	Y	FB	TF	035.42	26.40	AT 12000		
WACKI	401500.92N / 0751037.60W	Y	FB	TF	035.55	07.70	AT 11000		
MAZIE	401919.55N / 0750635.28W	Y	FB	TF	035.64	05.30			

En Route Transition									
SWANN	390905.28N / 0761343.94W	Y		IF					SWANN.MAZIE3
GATBY	391540.02N / 0760601.84W	Y	FB	TF	042.29	08.89			
RAZER	392122.35N / 0760034.71W	Y	FB	TF	036.56	07.10			
BUZIE	393457.93N / 0754742.45W	Y	FB	TF	036.21	16.85			
JAIKE	394714.76N / 0753625.53W	Y	FB	TF	035.31	15.05	AT 12000		
ILENE	400845.09N / 0751628.27W	Y	FB	TF	035.42	26.40	AT 12000		
WACKI	401500.92N / 0751037.60W	Y	FB	TF	035.55	07.70	AT 11000		
MAZIE	401919.55N / 0750635.28W	Y	FB	TF	035.64	05.30			

Common Route									
MAZIE	401919.55N / 0750635.28W	Y		IF					MAZIE.MAZIE3
REGLE	402412.34N / 0745943.76W	Y	FB	TF	047.04	07.16	AT 7000		
GNNZO	403222.45N / 0744812.23W	Y	FO	TF	047.08	12.00			
47N,KCDW,KLDJ, KMMU,N07,KSMQ, KTEB				FM	047.08				

