

This is a corrected copy of the procedure published in **FEDERAL AVIATION ADMINISTRATION
FLIGHT STANDARDS SERVICE
STANDARD TERMINAL ARRIVAL (STAR)**
NFDD 042. See page 4.

Bearings, headings, courses, tracks and radials are magnetic. Elevations and altitudes are in feet, MSL. Altitudes are minimum altitudes unless otherwise indicated.
Distances are in nautical miles (NM). Graphic depictions attached.

| Arrival Name | Number | STAR Computer Code | Superseded Number | Dated | Effective Date |
|---------------------|-------------|---------------------|-------------------|-------------------|-------------------|
| PAATS (RNAV) | FOUR | ESSSO.PAATS4 | THREE | 02/01/2018 | 04/20/2023 |

TRANSITION ROUTES:

| Transition Name | Transition Computer Codes | From FIX/NAVAID | To FIX/NAVAID | Course | Distance | MEA | MOCA | MAA | Crossing Altitudes / Fixes |
|-----------------|---------------------------|-----------------|---------------|--------|----------|------|------|-----|----------------------------|
| BBDOL | BBDOL.PAATS4 | BBDOL | BBDOL | | | | | | |
| | | | WNDYB | 048.89 | 12.47 | 6000 | 2100 | | |
| | | | GDZLA | 049.22 | 20.39 | 6000 | 2100 | | |
| | | | KRABY | 045.73 | 22.63 | 6000 | 2100 | | |
| | | | BUKYY | 057.65 | 27.43 | 6000 | 2100 | | |
| | | | JAYBO | 086.98 | 35.02 | 6000 | 1600 | | |
| | | | HEDGE | 087.49 | 09.00 | 6000 | 1600 | | |
| | | | CANNY | 048.34 | 12.57 | 6000 | 1600 | | |
| | | | ESSSO | 016.85 | 13.42 | 6000 | 1500 | | |
| GORDONSVILLE | GVE.PAATS4 | GVE VORTAC | GVE VORTAC | | | | | | |
| | | | BOOYA | 069.59 | 44.14 | 6000 | 2800 | | |
| | | | BUKYY | 070.08 | 34.18 | 6000 | 2100 | | |
| | | | JAYBO | 086.98 | 35.02 | 6000 | 1600 | | |
| | | | HEDGE | 087.49 | 09.00 | 6000 | 1600 | | |
| | | | CANNY | 048.34 | 12.57 | 6000 | 1600 | | |
| | | | ESSSO | 016.85 | 13.42 | 6000 | 1500 | | |
| HYTRA | HYTRA.PAATS4 | HYTRA | HYTRA | | | | | | |
| | | | PRNCZ | 049.50 | 25.35 | 6000 | 1600 | | |
| | | | GARED | 048.19 | 05.00 | 6000 | 1600 | | |
| | | | HEDGE | 048.22 | 14.70 | 6000 | 1600 | | |
| | | | CANNY | 048.34 | 12.57 | 6000 | 1600 | | |
| | | | ESSSO | 016.85 | 13.42 | 6000 | 1500 | | |

ARRIVAL ROUTE DESCRIPTION:

KPHL: FROM ESSSO ON TRACK 046.03/7.52 TO PAATS.

LANDING KPHL RWY 9L/R: FROM PAATS ON TRACK 016.86/10.91 TO TRNBL, THEN ON TRACK 349.94/7.93 TO WEVVE, THEN ON TRACK 267.52/4.00 TO ERNYY, THEN ON TRACK 267.52. EXPECT RADAR VECTORS TO FINAL APPROACH COURSE.

LANDING KPHL RWY 17, 35: FROM PAATS ON TRACK 069.61/12.99 TO TEBEE, THEN ON TRACK 055.00. EXPECT RADAR VECTORS TO FINAL APPROACH COURSE.

FEDERAL AVIATION ADMINISTRATION
FLIGHT STANDARDS SERVICE
STANDARD TERMINAL ARRIVAL (STAR)

Bearings, headings, courses, tracks and radials are magnetic. Elevations and altitudes are in feet, MSL. Altitudes are minimum altitudes unless otherwise indicated.
Distances are in nautical miles (NM). Graphic depictions attached.

| Arrival Name | Number | STAR Computer Code | Superseded Number | Dated | Effective Date |
|---------------------|-------------|---------------------|-------------------|-------------------|-------------------|
| PAATS (RNAV) | FOUR | ESSSO.PAATS4 | THREE | 02/01/2018 | 04/20/2023 |

LANDING KPHL RWY 26, 27L/R: FROM PAATS ON TRACK 080.79/12.63 TO ROLL, THEN ON TRACK 045.43/19.09 TO CHPMN, THEN ON TRACK 059.61/9.39 TO PSOUT, THEN ON TRACK 087.00/3.00 TO MKORD, THEN ON TRACK 087.00. EXPECT RADAR VECTORS TO FINAL APPROACH COURSE.

LANDING KMQS: FROM ESSSO ON TRACK 046.03/7.52 TO PAATS, THEN ON TRACK 025.89/16.61 TO RANSM, THEN ON TRACK 352.00/2.00 TO EBRLY, THEN ON TRACK 352.00. EXPECT RADAR VECTORS TO FINAL APPROACH COURSE.

LANDING KTTN/KPNE: FROM ESSSO ON TRACK 046.03/7.52 TO PAATS, THEN ON TRACK 025.89/16.61 TO RANSM, THEN ON TRACK 076.11/20.05 TO WOJIK, THEN ON TRACK 086.60/7.41 TO PSOUT, THEN ON TRACK 029.00/16.58 TO HENYY, THEN ON TRACK 029.00. EXPECT RADAR VECTORS TO FINAL APPROACH COURSE.

PBN REQUIREMENT NOTES

RNAV 1 - DME/DME/IRU OR GPS

EQUIPMENT REQUIREMENT NOTES

RADAR REQUIRED

PROCEDURAL DATA NOTES:

NOTE: JET AIRCRAFT ONLY.

NOTE: HYTRA TRANSITION DO NOT FILE – TO BE ASSIGNED BY ATC.

NOTE: CAUTION: PARACHUTE JUMPING 2.7 NM SE CHPMN, 1.5 NM RADIUS OF CROSS KEYS AIRPORT, AOB 13,500 (SR-SS).

FIXES AND/OR HOLDING PATTERNS:

CHART HOLDING AT BBDOL: HOLD SW, LT, 48.89 INBOUND, 10 NM LEGS.

CHART HOLDING AT BUKYY: HOLD W, RT, 068.08 INBOUND, 9 NM LEGS, 230 KIAS.

CHART HOLDING AT GDZLA: HOLD SW, RT, 049.22 INBOUND, 10 NM LEGS.

CHART HOLDING AT GVE VORTAC: HOLD W, LT, 093.00 INBOUND, 10 NM LEGS.

CHART HOLDING AT JAYBO: HOLD W, RT, 087.49 INBOUND, 8 NM LEGS.

CHART HOLDING AT PAATS: HOLD SW, LT, 051.18 INBOUND, 4 NM LEGS, 210 KIAS.

CHART HOLDING AT PRNCZ: HOLD SW, LT, 049.50 INBOUND, 10 NM LEGS.

COMMUNICATIONS:

CHART: MQS AWOS

CHART: PHL APP CON

AIRPORTS SERVED:

| <u>AIRPORT ID</u> | <u>CITY</u> | <u>STATE</u> |
|-------------------|--------------|--------------|
| KPHL | PHILADELPHIA | PA |
| KMQS | COATESVILLE | PA |
| KPNE | PHILADELPHIA | PA |
| KTTN | TRENTON | NJ |

LOST COMMUNICATIONS PREFERENCES:

FEDERAL AVIATION ADMINISTRATION
FLIGHT STANDARDS SERVICE
STANDARD TERMINAL ARRIVAL (STAR)

Bearings, headings, courses, tracks and radials are magnetic. Elevations and altitudes are in feet, MSL. Altitudes are minimum altitudes unless otherwise indicated.
Distances are in nautical miles (NM). Graphic depictions attached.

| Arrival Name | Number | STAR Computer Code | Superseded Number | Dated | Effective Date |
|---------------------|-------------|---------------------|-------------------|-------------------|-------------------|
| PAATS (RNAV) | FOUR | ESSSO.PAATS4 | THREE | 02/01/2018 | 04/20/2023 |

REMARKS:

THE ENVIRONMENTAL REVIEW UNDER ORDER 1050.1 (LATEST EDITION) AND THE NOISE SCREENING HAVE BEEN ACCOMPLISHED.

ADDITIONAL FLIGHT DATA:

DME/DME ASSESSMENT: SAT (RNP 2.0)

MAG VAR: KPHL 12W/2020.

CHART AT ERNYY TERMINUS: KPHL LDG RWY 09L/R.

CHART AT MKORD TERMINUS: KPHL LDG RWY 27L/R, 26.

CHART AT TEBEE TERMINUS: KPHL LDG RWY 17, 35.

CHART AT EBRLY TERMINUS: LDG KMQS.

CHART AT HENYY TERMINUS: LDG KPNE AND KTTN.

FLIGHT INSPECTED BY:

PENDING

Name

Organization

Date

Digitally signed by

JASON KRETSCHMER

Feb 27, 2023

Signature

DEVELOPED BY:

JASON KRETSCHMER (DANIEL JOHNSEN)

Name

AJV-A421

Organization

10/4/2022

Date

Digitally signed by

JASON KRETSCHMER

Dec 01, 2022

Signature

APPROVED BY:

MARLON ROBINSON

Name

AJV-A420

Organization

Date

Digitally signed by

JASON KRETSCHMER

Dec 01, 2022

Signature

FEDERAL AVIATION ADMINISTRATION
FLIGHT STANDARDS SERVICE
STANDARD TERMINAL ARRIVAL (STAR)

Bearings, headings, courses, tracks and radials are magnetic. Elevations and altitudes are in feet, MSL. Altitudes are minimum altitudes unless otherwise indicated.
Distances are in nautical miles (NM). Graphic depictions attached.

| Arrival Name | Number | STAR Computer Code | Superseded Number | Dated | Effective Date |
|---------------------|-------------|---------------------|-------------------|-------------------|-------------------|
| PAATS (RNAV) | FOUR | ESSSO.PAATS4 | THREE | 02/01/2018 | 04/20/2023 |

CHANGES:

1. STAR COMPUTER CODE CHANGED FROM PAATS.PAATS3 TO ESSSO.PAATS4.
2. REMOVED FLAT ROCK (FAK) TRANSITION TO BUKYY.
3. ADDED BBDOL TRANSITION.
4. REMOVED PATUXENT (PXT) TRANSITION TO BUKYY.
5. ADDED HYTRA TRANSITION.
6. ALL MEAS LOWERED TO 6000.
7. REMOVED MEAS FROM THE COMMON ROUTE.
8. ADDED MINIMUM OBSTACLE CLEARANCE ALTITUDES TO ALL TRANSITION LEGS.
9. REMOVED FIXES BEELZ, CHEAZ, SHONA, AND TULK.
10. AMENDED GORDONSVILLE (GVE) TRANSITION FROM "GVE BUKYY JAYBO HEDGE CANNY ESSO" TO "GVE BOOYA BUKKY JAYBO CANNY ESSSO."
11. AMENDED KPHL RWY 09L AND 09R TRANSITION FROM "PAATS CHEAZ STAYK TRACK 266.00" TO "PAATS TRNBLE WEVVE ERNYY TRACK 267.52."
12. AMENDED KPHL RWY 17 AND 35 TRANSITION FROM "PAATS TEBEE TRACK 057.00" TO "PAATS TEBEE TRACK 055.00."
13. AMENDED KPHL RWY 26, 27L AND 27R TRANSITION FROM "PAATS RROLL BEELZ WOJIK PSOUT TRACK 087.00" TO "PAATS RROLL CHPMN PSOUT MKORD TRACK 087.00."
14. AMENDED MQS COMMON ROUTE FROM "PAATS RANSM TRACK 352.00" TO "ESSO PAATS RANSM EBRLY TRACK 352.00."
15. AMENDED PNE/TTN COMMON ROUTE FROM "PAATS RANSM WOJIK PSOUT TRACK 032.00" TO "ESSO PAATS RANSM WOJIK PSOUT HENYY TRACK 029.00".
16. REMOVED PROCEDURAL DATA NOTE: RNAV, DME/DME/IRU OR GPS REQUIRED. ADDED PBN REQUIREMENT NOTES: RNAV 1 – DME/DME/IRU OR GPS.
17. REMOVED PROCEDURAL DATA NOTE: RADAR REQUIRED. ADDED EQUIPMENT REQUIREMENT NOTES: RADAR REQUIRED.
18. CHANGED TURBO JET AIRCRAFT NOTE TO READ JET AIRCRAFT.
19. ADDED NOTE: HYTRA TRANSITION DO NOT FILE – TO BE ASSIGNED BY ATC.
20. REMOVED CHART: "EXPECT TO CROSS JAYBO AT 15000", "EXPECT TO CROSS GARED AT 13000", AND "CROSS CHEAZ AT 190 KIAS."
21. REMOVED CHART: LANDING PHL EXPECT TO CROSS ESSSO AT 10000 AND 250 KIAS. LANDING ALL OTHER AIRPORTS EXPECT TO CROSS ESSSO AT 12000 AND 250 KIAS.
22. REMOVED LANDING PHL: CROSS WOJIK AT 190 KIAS.
23. ADDED CHARTED HOLDING AT GVE, BBDOL, GDZLA AND PRNCZ.
24. REMOVED GARED HOLDING FROM PROCEDURE.
25. ADDED CHART AT ERNYY TERMINUS: KPHL LDG RWY 09L/R; CHART AT MKORD TERMINUS: KPHL LDG RWY 27L/R, 26; CHART AT TEBEE TERMINUS: KPHL LDG RWY 17, 35; CHART AT EBRLY TERMINUS: LDG KMQS; AND CHART AT HENYY TERMINUS: LDG KPNE AND KTTN.
26. CHANGED HOLDING AT BUKYY FROM "HOLD SW, RT, 056.00 INBOUND, 10 NM LEGS" TO "HOLD W, RT, 068.08 INBOUND, 9 NM LEGS, 230 KIAS."
27. REMOVED RECOMMENDED NAVAID.
28. REMOVED AIRPORT NAMES FROM AIRPORTS SERVED.

REASONS:

1. UPDATED IAW 8260.19I, 4-5-2.R.
- 2-5. VOR MON DECOMMISSIONING.
6. MEA LOWERED TO THE LOWEST POSSIBLE ALTITUDE (CRITERIA).
- 7, 28. UPDATED IAW 8260.19I DOCUMENTATION STANDARDS.
8. REQUIRED IAW 8260.19I 4-5-12 B(8).
9. ATC REQUEST, NO LONGER NEEDED
- 10-15. ATC REQUEST TO IMPROVE EFFICIENCY AND ALIGN WITH CURRENT TRAFFIC FLOWS.
- 16-17. NEW FORMAT; IAW 8260.19I 8-6-8 MEMO.
18. CURRENT DOCUMENTATION STANDARDS IAW 8260.19I 4-5-12 D(4).
19. ATC REQUEST.
- 20-22. VERTICAL NAV PLANNING NO LONGER COMPLIANT IAW 8260.19I
23. ATC REQUEST TO FACILITATE HOLDING
24. ATC REQUEST, NO LONGER NEEDED
25. IAW 8260.19I 4-5-12 H(5)
26. UPDATED PER ATC REQUEST.
27. NO LONGER REQUIRED FOR CODING.



FEDERAL AVIATION ADMINISTRATION
FLIGHT STANDARDS SERVICE
STANDARD TERMINAL ARRIVAL (STAR)

Bearings, headings, courses, tracks and radials are magnetic. Elevations and altitudes are in feet, MSL. Altitudes are minimum altitudes unless otherwise indicated.
Distances are in nautical miles (NM). Graphic depictions attached.

| Arrival Name | Number | STAR Computer Code | Superseded Number | Dated | Effective Date |
|--------------|--------|--------------------|-------------------|------------|----------------|
| PAATS (RNAV) | FOUR | ESSSO.PAATS4 | THREE | 02/01/2018 | 04/20/2023 |

01/26/23: THIS IS AN UPDATED COPY OF THE FORM DEVELOPED ON 10/04/22.

1. ADDED "NOTE: CAUTION: PARACHUTE JUMPING 2.7 NM SE CHPMN, 1.5 NM RADIUS OF CROSS KEYS AIRPORT, AOB 13,500 (SR-SS)" -- ATC REQUEST; SEE LOA DATED 01/25/23.

02/08/23: THIS IS AN UPDATED COPY OF THE FORM DEVELOPED ON 10/04/22.

1. ADDED BLOCK ALTITUDE "BETWEEN 10000 AND 12000" AT ESSSO ON ALL TRANSITION ROUTES -- DIRECTED BY AFS IAW 8260.58B, 1-2-5.B(1)(A).

02/27/23: THIS IS AN UPDATED COPY OF THE FORM DEVELOPED ON 10/04/22.

1. REQUIRED EFFECTIVE DATE CHANGED FROM ROUTINE TO 04/20/2023.

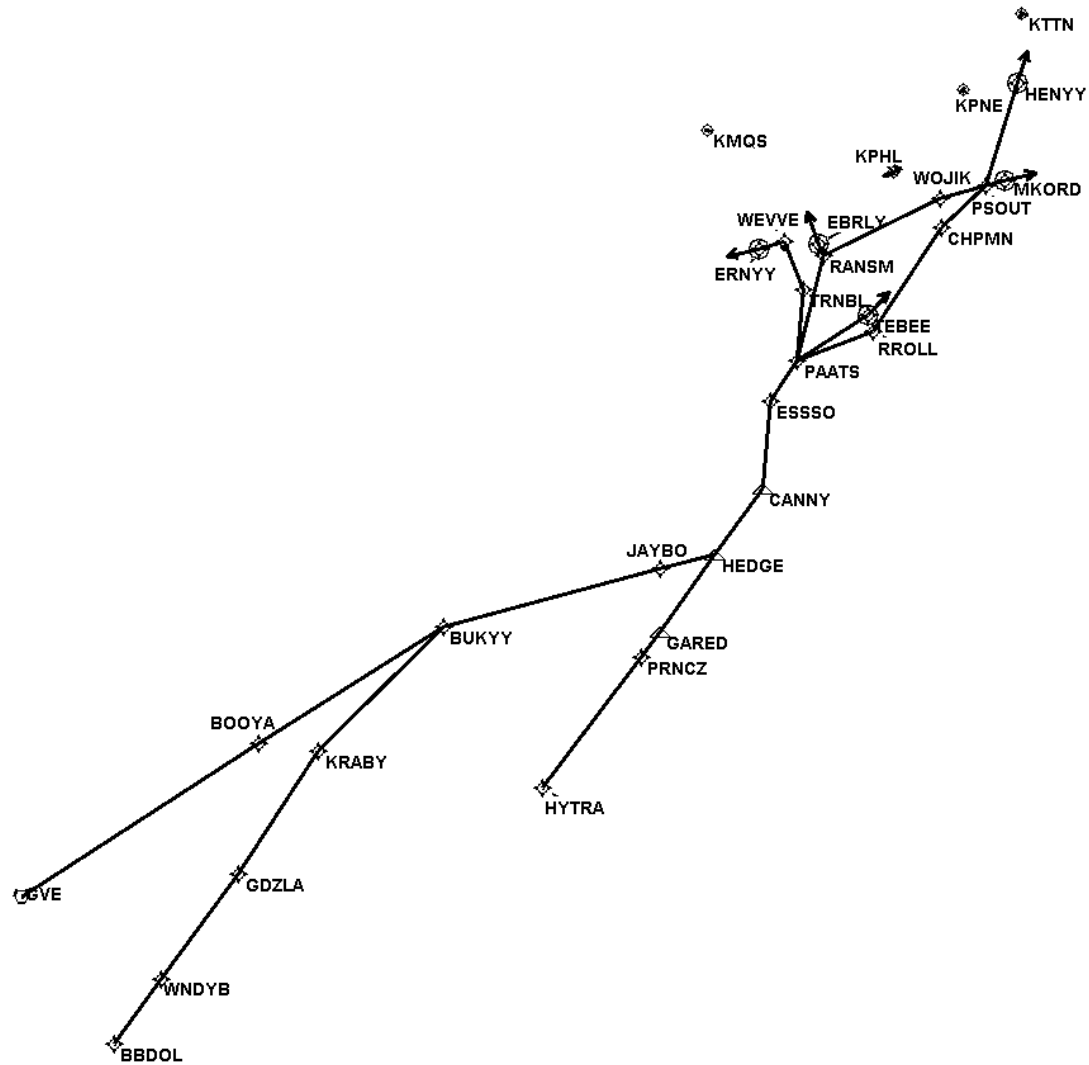
03/07/23: THIS IS AN CORRECTED COPY OF THE FORM APPROVED ON 02/27/22.

1. DELETED BLOCK ALTITUDE "BETWEEN 10000 AND 12000" AT ESSSO ON ALL TRANSITION ROUTES -- WAIVER REQUEST FOR ABSENCE OF MANDATORY ALTITUDES/MINIMUM LEG LENGTHS WAS SPLIT INTO SEPARATE WAIVERS TO ACCOMMODATE AFS APPROVAL.

FEDERAL AVIATION ADMINISTRATION
FLIGHT STANDARDS SERVICE
STANDARD TERMINAL ARRIVAL (STAR)

Bearings, headings, courses, tracks and radials are magnetic. Elevations and altitudes are in feet, MSL. Altitudes are minimum altitudes unless otherwise indicated.
Ceilings are in feet above airport elevation. Distances are in nautical miles. Visibilities are in statute miles or feet RVR unless otherwise indicated.

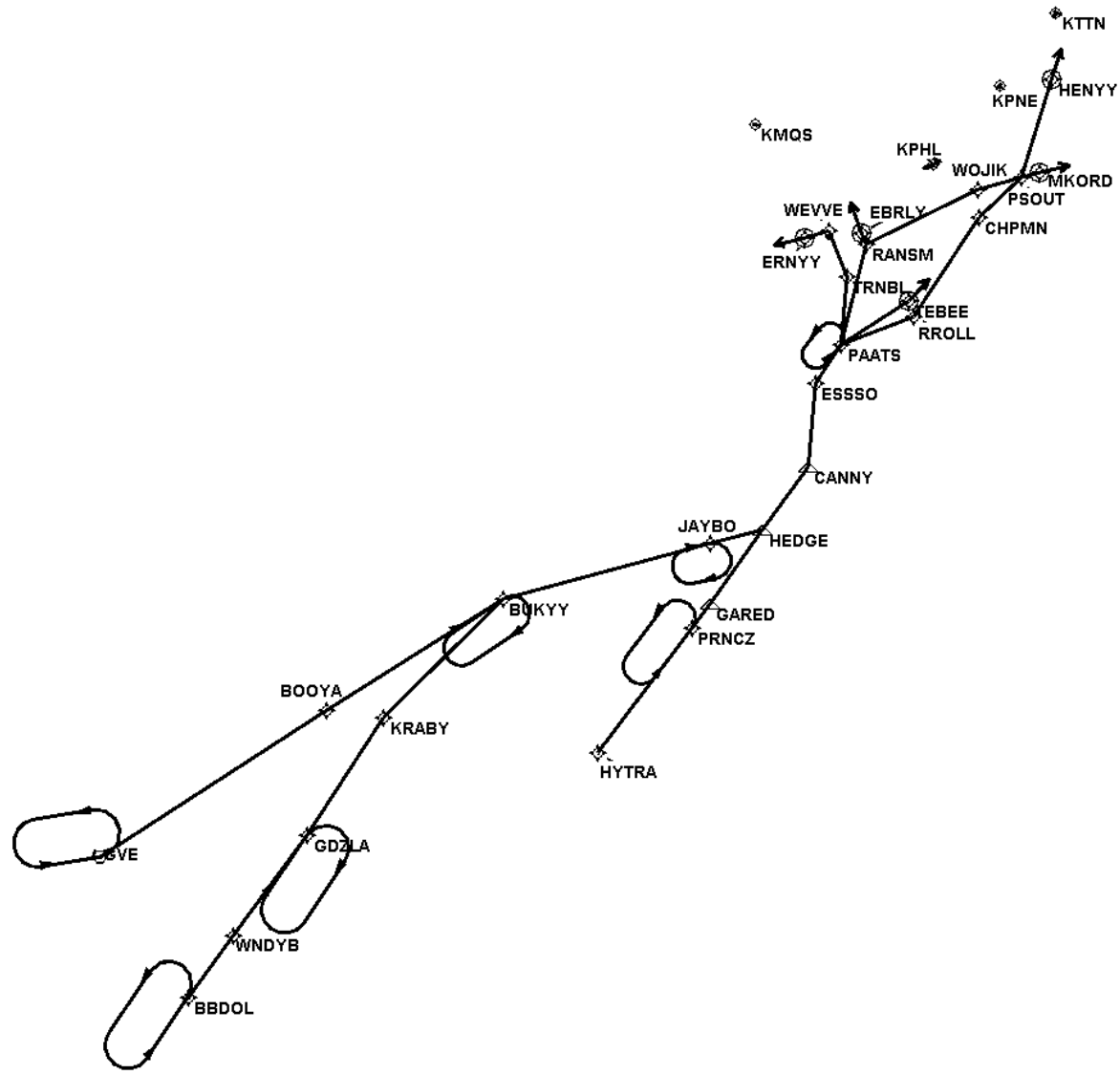
| Arrival Name | Number | STAR Computer Code | Superseded Number | Dated | Effective Date |
|---------------------|--------|--------------------|-------------------|------------|----------------|
| PAATS (RNAV) | FOUR | ESSSO.PAATS4 | THREE | 02/01/2018 | 04/20/2023 |
| Graphic Depiction 1 | | | | | |



FEDERAL AVIATION ADMINISTRATION
FLIGHT STANDARDS SERVICE
STANDARD TERMINAL ARRIVAL (STAR)

Bearings, headings, courses, tracks and radials are magnetic. Elevations and altitudes are in feet, MSL. Altitudes are minimum altitudes unless otherwise indicated.
Ceilings are in feet above airport elevation. Distances are in nautical miles. Visibilities are in statute miles or feet RVR unless otherwise indicated.

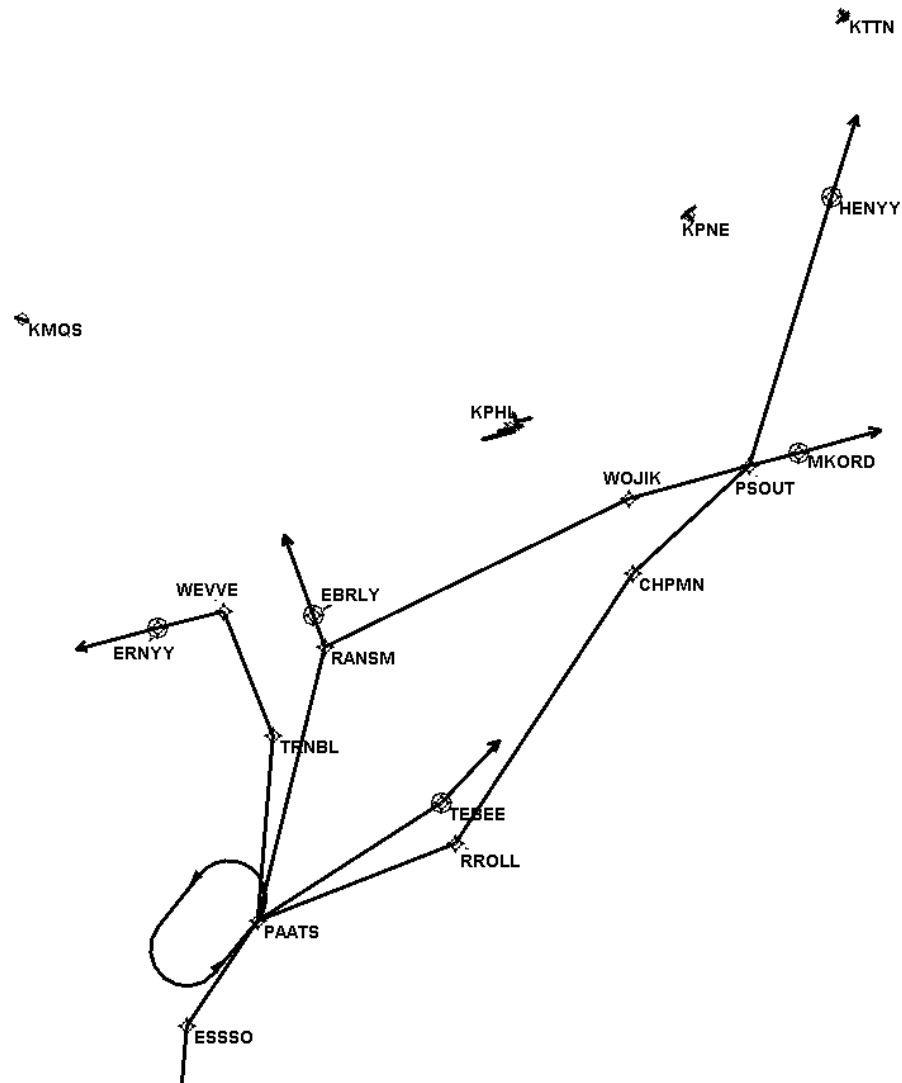
| Arrival Name | Number | STAR Computer Code | Superseded Number | Dated | Effective Date |
|---------------------|--------|--------------------|-------------------|------------|----------------|
| PAATS (RNAV) | FOUR | ESSSO.PAATS4 | THREE | 02/01/2018 | 04/20/2023 |
| Graphic Depiction 2 | | | | | |



FEDERAL AVIATION ADMINISTRATION
FLIGHT STANDARDS SERVICE
STANDARD TERMINAL ARRIVAL (STAR)

Bearings, headings, courses, tracks and radials are magnetic. Elevations and altitudes are in feet, MSL. Altitudes are minimum altitudes unless otherwise indicated.
Ceilings are in feet above airport elevation. Distances are in nautical miles. Visibilities are in statute miles or feet RVR unless otherwise indicated.

| Arrival Name | Number | STAR Computer Code | Superseded Number | Dated | Effective Date |
|---------------------|--------|--------------------|-------------------|------------|----------------|
| PAATS (RNAV) | FOUR | ESSSO.PAATS4 | THREE | 02/01/2018 | 04/20/2023 |
| Graphic Depiction 3 | | | | | |



FEDERAL AVIATION ADMINISTRATION
FLIGHT STANDARDS SERVICE
STAR (DATA RECORD)

| Arrival Name PAATS (RNAV) | | Number FOUR | | STAR Computer Code ESSSO.PAATS4 | | Superseded Number THREE | | Dated 02/01/2018 | Effective Date 04/20/2023 |
|------------------------------|--------------------------|----------------|-------|------------------------------------|--------|----------------------------|----------|---------------------|------------------------------|
| FIX/NAVAID | LAT/LONG | C | FO/FB | LEG TYPE | TC | DIST (NM) | ALTITUDE | SPEED | REMARKS |
| En Route Transition | | | | | | | | | |
| BBDOL | 373809.20N / 0775047.86W | Y | | IF | | | | | BBDOL.PAATS4 |
| WNDYB | 374807.91N / 0774121.23W | Y | FB | TF | 036.89 | 12.47 | | | |
| GDZLA | 380422.01N / 0772544.41W | Y | FB | TF | 037.22 | 20.39 | | | |
| KRABY | 382311.14N / 0770945.72W | Y | FB | TF | 033.73 | 22.63 | | | |
| BUKYY | 384220.00N / 0764442.63W | Y | FB | TF | 045.65 | 27.43 | | | |
| JAYBO | 385117.17N / 0760124.35W | Y | FB | TF | 074.98 | 35.02 | | | |
| HEDGE | 385332.11N / 0755014.46W | Y | FB | TF | 075.49 | 09.00 | | | |
| CANNY | 390339.92N / 0754040.65W | Y | FB | TF | 036.34 | 12.57 | | | |
| ESSSO | 391703.00N / 0753913.00W | Y | FB | TF | 004.85 | 13.42 | | | |
| | | | | | | | | | |
| En Route Transition | | | | | | | | | |
| GVE VORTAC | 380048.96N / 0780910.90W | Y | | IF | | | | | GVE.PAATS4 |
| BOOYA | 382420.50N / 0772146.36W | Y | FB | TF | 057.59 | 44.14 | | | |
| BUKYY | 384220.00N / 0764442.63W | Y | FB | TF | 058.08 | 34.18 | | | |
| JAYBO | 385117.17N / 0760124.35W | Y | FB | TF | 074.98 | 35.02 | | | |
| HEDGE | 385332.11N / 0755014.46W | Y | FB | TF | 075.49 | 09.00 | | | |
| CANNY | 390339.92N / 0754040.65W | Y | FB | TF | 036.34 | 12.57 | | | |
| ESSSO | 391703.00N / 0753913.00W | Y | FB | TF | 004.85 | 13.42 | | | |
| | | | | | | | | | |
| En Route Transition | | | | | | | | | |
| HYTRA | 381731.91N / 0762449.80W | Y | | IF | | | | | HYTRA.PAATS4 |
| PRNCZ | 383738.10N / 0760508.20W | Y | FB | TF | 037.50 | 25.35 | | | |
| GARED | 384140.41N / 0760121.96W | Y | FB | TF | 036.19 | 05.00 | | | |
| HEDGE | 385332.11N / 0755014.46W | Y | FB | TF | 036.22 | 14.70 | | | |
| CANNY | 390339.92N / 0754040.65W | Y | FB | TF | 036.34 | 12.57 | | | |
| ESSSO | 391703.00N / 0753913.00W | Y | FB | TF | 004.85 | 13.42 | | | |

FEDERAL AVIATION ADMINISTRATION
FLIGHT STANDARDS SERVICE
STAR (DATA RECORD)

| Arrival Name PAATS (RNAV) | | Number FOUR | | STAR Computer Code ESSSO.PAATS4 | | Superseded Number THREE | | Dated 02/01/2018 | Effective Date 04/20/2023 |
|------------------------------|--------------------------|----------------|-------|------------------------------------|--------|----------------------------|----------|---------------------|------------------------------|
| FIX/NAVAID | LAT/LONG | C | FO/FB | LEG TYPE | TC | DIST (NM) | ALTITUDE | SPEED | REMARKS |
| Common Route | | | | | | | | | |
| ESSSO | 391703.00N / 0753913.00W | Y | | IF | | | | | ESSSO.PAATS4 |
| PAATS | 392317.01N / 0753347.46W | Y | FB | TF | 034.03 | 07.52 | | | |
| | | | | | | | | | |
| Common Route | | | | | | | | | |
| ESSSO | 391703.00N / 0753913.00W | Y | | IF | | | | | ESSSO.PAATS4 |
| PAATS | 392317.01N / 0753347.46W | Y | FB | TF | 034.03 | 07.52 | | | |
| RANSM | 393925.02N / 0752837.70W | Y | FB | TF | 013.89 | 16.61 | | | |
| EBRLY | 394117.87N / 0752930.87W | Y | FO | TF | 340.00 | 02.00 | | | |
| KMQS | | | | FM | 340.00 | | | | |
| | | | | | | | | | |
| Common Route | | | | | | | | | |
| ESSSO | 391703.00N / 0753913.00W | Y | | IF | | | | | ESSSO.PAATS4 |
| PAATS | 392317.01N / 0753347.46W | Y | FB | TF | 034.03 | 07.52 | | | |
| RANSM | 393925.02N / 0752837.70W | Y | FB | TF | 013.89 | 16.61 | | | |
| WOJIK | 394808.34N / 0750513.46W | Y | FB | TF | 064.11 | 20.05 | | | |
| PSOUT | 395006.14N / 0745557.16W | Y | FB | TF | 074.60 | 07.41 | | | |
| HENYY | 400558.20N / 0744938.00W | Y | FO | TF | 017.00 | 16.58 | | | |
| KPNE, KTTN | | | | FM | 017.00 | | | | |
| | | | | | | | | | |
| Runway Transition | | | | | | | | | |
| PAATS | 392317.01N / 0753347.46W | Y | | IF | | | | | |
| TRNBL | 393409.96N / 0753235.72W | Y | FB | TF | 004.86 | 10.91 | | | |
| WEVVE | 394131.35N / 0753627.25W | Y | FB | TF | 337.94 | 07.93 | | | |
| ERNYY | 394031.19N / 0754128.22W | Y | FO | TF | 255.52 | 04.00 | | | |
| KPHL:RWY 9L, RWY 9R | | | | FM | 255.52 | | | | |



FEDERAL AVIATION ADMINISTRATION
FLIGHT STANDARDS SERVICE
STAR (DATA RECORD)

| Arrival Name | Number | STAR Computer Code | Superseded Number | Dated | Effective Date |
|--------------|--------|--------------------|-------------------|------------|----------------|
| PAATS (RNAV) | FOUR | ESSSO.PAATS4 | THREE | 02/01/2018 | 04/20/2023 |

| FIX/NAVAID | LAT/LONG | C | FO/FB | LEG TYPE | TC | DIST (NM) | ALTITUDE | SPEED | REMARKS |
|--------------------------|--------------------------|---|-------|-------------|--------|--------------|----------|-------|---------|
| Runway Transition | | | | | | | | | |
| PAATS | 392317.01N / 0753347.46W | Y | | IF | | | | | |
| TEBEE | 393013.97N / 0751937.19W | Y | FO | TF | 057.61 | 12.99 | | | |
| KPHL: RWY 17, RWY 35 | | | | FM | 043.00 | | | | |

| | | | | | | | | | |
|-----------------------------------|--------------------------|---|----|----|--------|-------|--|--|--|
| Runway Transition | | | | | | | | | |
| PAATS | 392317.01N / 0753347.46W | Y | | IF | | | | | |
| RROLL | 392750.44N / 0751835.08W | Y | FB | TF | 068.79 | 12.63 | | | |
| CHPMN | 394346.53N / 0750457.02W | Y | FB | TF | 033.43 | 19.09 | | | |
| PSOUT | 395006.14N / 0745557.16W | Y | FB | TF | 047.61 | 09.39 | | | |
| MKORD | 395052.70N / 0745211.41W | Y | FO | TF | 075.00 | 03.00 | | | |
| KPHL: RWY 26, RWY 27L, RWY 27R | | | | FM | 075.00 | | | | |