

FEDERAL AVIATION ADMINISTRATION  
FLIGHT STANDARDS SERVICE  
STANDARD TERMINAL ARRIVAL (STAR)

Bearings, headings, courses, tracks and radials are magnetic. Elevations and altitudes are in feet, MSL. Altitudes are minimum altitudes unless otherwise indicated.  
Ceilings are in feet above airport elevation. Distances are in nautical miles. Visibilities are in statute miles or feet RVR unless otherwise indicated.

Arrival Name	Number	STAR Computer Code	Superseded Number	Dated	Effective Date
DEEPO (RNAV)	TWO	DEEPO.DEEPO2	ONE	6/10/2004	17 Apr 2025

TRANSITION ROUTES:

Transition Name	Transition Computer Codes	From FIX/NAVAID	To FIX/NAVAID	Course	Distance	MEA	MOCA	MAA	Crossing Altitudes / Fixes
GROTON	GON.DEEPO2	GON VOR/DME	GON VOR/DME						
			MINNK	102.06	28.43	3000	1900	FL230	
			DEEPO	134.83	30.45	3000	1900	FL230	AT 11000
KYSKY	KYSKY.DEEPO2	KYSKY	KYSKY						
			CPCOD	086.79	27.77	3000	1900	FL230	
			LIBBE	086.74	13.17	3000	1900	FL230	
			FLAPE	090.12	13.50	3000	1900	FL230	
			DEEPO	090.32	11.00	3000	1900	FL230	AT 11000
YANTC	YANTC.DEEPO2	YANTC	YANTC						
			MINNK	130.08	28.45	3000	2100	FL230	
			DEEPO	134.83	30.45	3000	1900	FL230	AT 11000

ARRIVAL ROUTE DESCRIPTION:

FROM DEEPO ON TRACK 096.59/11.21 TO VESSL.

LANDING RWY 6: FROM VESSL ON TRACK 085.48/8.41 TO CROSS BUOYS AT OR ABOVE 5000, THEN ON TRACK 136.43/9.14 TO CROSS UFTAC AT OR ABOVE 2300. EXPECT ILS OR LOC RWY 6 APPROACH.

LANDING RWY 24: FROM VESSL ON TRACK 096.75/9.00 TO CROSS DLPHN AT OR ABOVE 9000, THEN ON TRACK 116.66/11.96 TO TOWBT, THEN ON TRACK 082.91/11.71 TO CROSS TARIF AT 5000, THEN ON TRACK 060.00. EXPECT RADAR VECTORS TO FINAL APPROACH COURSE.

PBN REQUIREMENT NOTES:

RNAV 1 - DME/DME/IRU OR GPS

EQUIPMENT REQUIREMENT NOTES:

RADAR REQUIRED

PROCEDURAL DATA NOTES:

FIXES AND/OR HOLDING PATTERNS:

CHART HOLDING AT DEEPO: HOLD W, RT, 090.32 INBOUND, 4 NM LEGS, 210 KIAS.

CHART HOLDING AT LIBBE: HOLD W, RT, 086.74 INBOUND, 8 NM LEGS.

COMMUNICATIONS:

CHART: NANTUCKET TOWER

AIRPORTS SERVED:

AIRPORT ID  
ACK

CITY  
NANTUCKET

STATE  
MA

FEDERAL AVIATION ADMINISTRATION  
FLIGHT STANDARDS SERVICE  
STANDARD TERMINAL ARRIVAL (STAR)

Bearings, headings, courses, tracks and radials are magnetic. Elevations and altitudes are in feet, MSL. Altitudes are minimum altitudes unless otherwise indicated.  
Ceilings are in feet above airport elevation. Distances are in nautical miles. Visibilities are in statute miles or feet RVR unless otherwise indicated.

Arrival Name	Number	STAR Computer Code	Superseded Number	Dated	Effective Date
DEEPO (RNAV)	TWO	DEEPO.DEEPO2	ONE	6/10/2004	17 Apr 2025

LOST COMMUNICATIONS PREFERENCES:

REMARKS:

THE ENVIRONMENTAL REVIEW UNDER ORDER 1050.1 (LATEST EDITION) AND THE NOISE SCREENING HAVE BEEN ACCOMPLISHED.  
208 FT SHIP HEIGHT EVALUATED OVER OPEN WATER

ADDITIONAL FLIGHT DATA:

DME/DME ASSESSMENT: SAT (RNP 2.0)  
MAG VAR: ACK 16W/1995  
CHART AT UFTAC TERMINUS: ACK LDG RWY 6.  
CHART AT TARIF TERMINUS: ACK LDG RWY 24.

FLIGHT INSPECTED BY:

ERIC L GEYER

ORGANIZATION:

AJF

DATE:

02/11/2025

Flight Inspected Signature:

*Digitally signed by*

**DAVID DANNER**

Feb 13, 2025

*Digitally signed by*

**DAVID DANNER**

Feb 13, 2025

*Digitally signed by*

**DAVID DANNER**

Feb 13, 2025

DEVELOPED BY:

NICHOLAS HEIDERSTADT

AJV-A33

10/07/2024

Developed By Signature:

APPROVED BY:

JOHN BORDY

AJV-A33

Approved By Signature:

CHANGES:

1. REMOVED: RIFLE AND TRANSITION.
2. RADAR REQUIRED MOVED FROM PROCEDURAL DATA NOTES TO EQUIPMENT REQUIRED NOTES.
3. ADDED: KYSKY TRANSITION
4. REMOVED: ORW TRANSITION.
5. ADDED: YANTC TRANSITION
6. ADDED: HOLDING AT DEEPO.
7. DELETED: EXPECT TO CROSS DEEPO AT 11000 AND 250 KTS.
8. ADDED: HOLDING AT LIBBE.
9. ADDED: "AT 11000" CROSSING RESTRICTION AT DEEPO.
10. REMOVED: CONDN, SALDY FROM ARRIVAL ROUTE DESCRIPTION .
11. ADDED: COMMON ROUTE - DEEPO TO VESSL.
12. ADDED: RUNWAY TRANSITION FOR RWY 06 AND 24.
13. CHANGED PBN REQUIREMENTS NOTE FROM "GPS REQUIRED" TO "RNAV 1 - DME/EME/IRU OR GPS, MOVED FROM PROCEDURAL DATA NOTES TO PBN REQUIREMENTS.

FEDERAL AVIATION ADMINISTRATION  
FLIGHT STANDARDS SERVICE  
STANDARD TERMINAL ARRIVAL (STAR)

Bearings, headings, courses, tracks and radials are magnetic. Elevations and altitudes are in feet, MSL. Altitudes are minimum altitudes unless otherwise indicated.  
Ceilings are in feet above airport elevation. Distances are in nautical miles. Visibilities are in statute miles or feet RVR unless otherwise indicated.

Arrival Name	Number	STAR Computer Code	Superseded Number	Dated	Effective Date
DEEPO (RNAV)	TWO	DEEPO.DEEPO2	ONE	6/10/2004	17 Apr 2025

14. FOR USE BY /E /F /G AMD /R EQUIPPED AIRCRAFT ONLY NOTE REMOVED FROM PROCEDURAL DATA NOTES.  
15. AIRPORTS SERVED CHANGED FROM AIRPORT NAME TO AIRPORT IDENTIFIER.  
16. MOCAS ADDED, ALL TRANSITIONS.

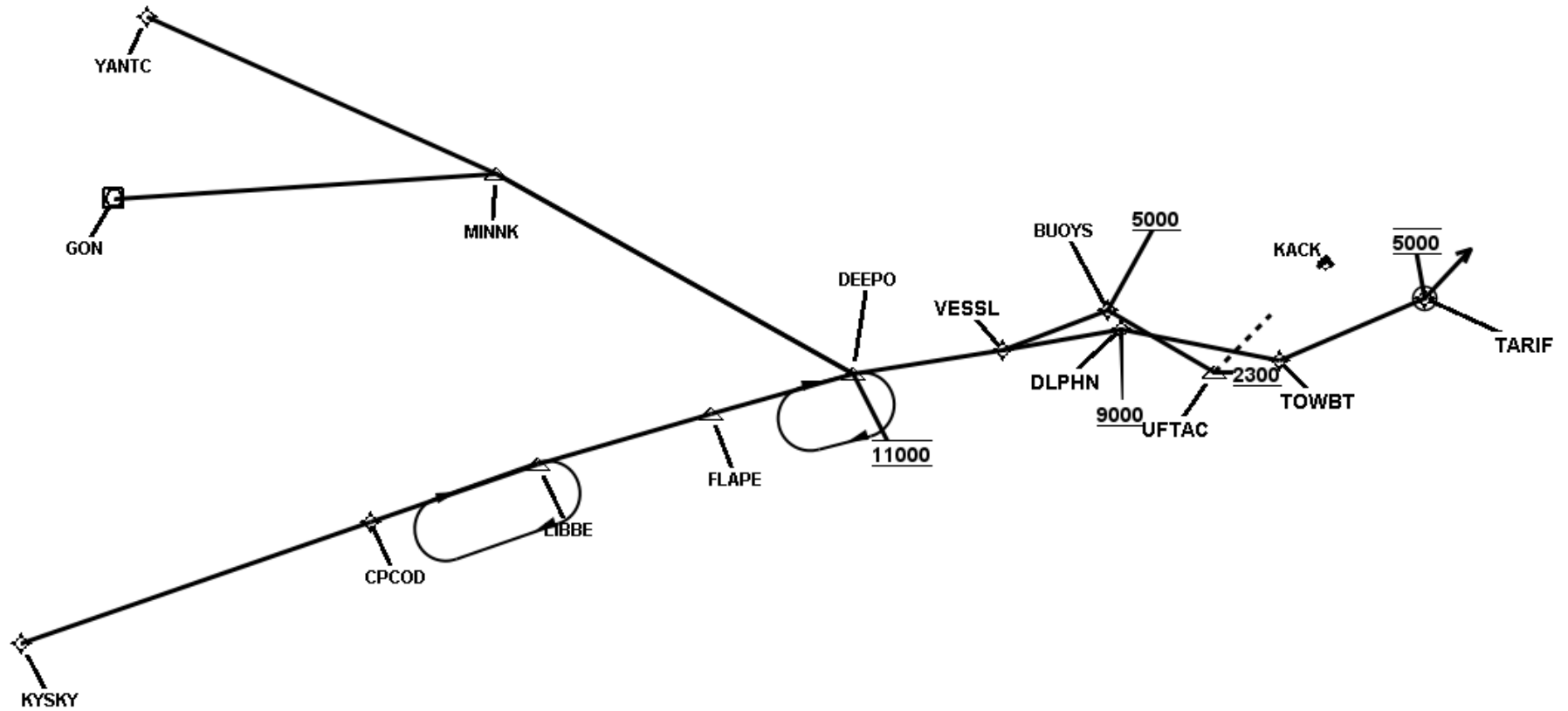
**REASONS:**

- 1 ATC REQUEST, MORE EFFICIENT ROUTING.  
2. IAW 8260.19J 4-5-12  
3. VOR MON DECOMMISSIONING  
4. IAW 8260.19J 4-5-12  
5-6. VOR MON DECOMMISSIONING.  
7. ATC REQUEST.  
8. NO LONGER REQUIRED  
9. ATC REQUEST.  
10. ATC REQUEST, NORMAL OPERATING PRACTICE.  
11-13. ATC REQUEST, MORE EFFICIENT AND PREDICTABLE ROUTE.  
14-17 IAW 8260.19J 4-5-12

FEDERAL AVIATION ADMINISTRATION  
FLIGHT STANDARDS SERVICE  
STANDARD TERMINAL ARRIVAL (STAR)

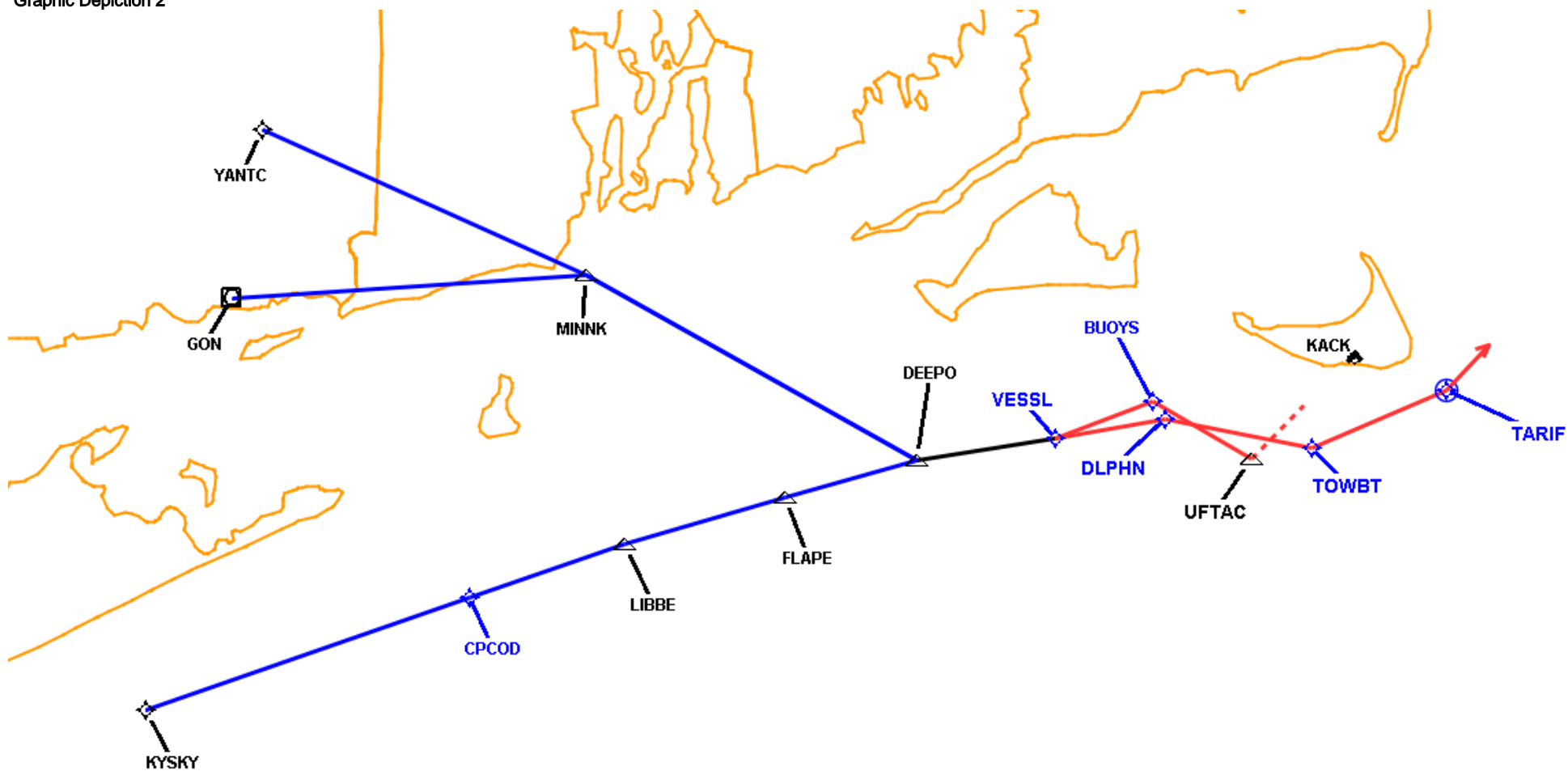
Bearings, headings, courses, tracks and radials are magnetic. Elevations and altitudes are in feet, MSL. Altitudes are minimum altitudes unless otherwise indicated.  
Ceilings are in feet above airport elevation. Distances are in nautical miles. Visibilities are in statute miles or feet RVR unless otherwise indicated.

Arrival Name	Number	STAR Computer Code	Superseded Number	Dated	Effective Date
DEEPO (RNAV)	TWO	DEEPO.DEEPO2	ONE	6/10/2004	17 Apr 2025
Graphic Depiction 1					



Bearings, headings, courses, tracks and radials are magnetic. Elevations and altitudes are in feet, MSL. Altitudes are minimum altitudes unless otherwise indicated. Ceilings are in feet above airport elevation. Distances are in nautical miles. Visibilities are in statute miles or feet RVR unless otherwise indicated.

### Graphic Depiction 2



FEDERAL AVIATION ADMINISTRATION  
FLIGHT STANDARDS SERVICE  
STAR (DATA RECORD)

Arrival Name DEEPO (RNAV)	Number TWO		STAR Computer Code DEEPO.DEEPO2		Superseded Number ONE		Dated 6/10/2004		Effective Date 17 Apr 2025	
FIX/NAVAID	LAT/LONG	C	FO/FB	LEG TYPE	TC	DIST (NM)	ALTITUDE	SPEED	REMARKS	
En Route Transition										
GON VOR/DME	411949.45N / 0720307.14W	Y		IF					GON.DEEPO2	
MINNK	412140.67N / 0712527.20W	Y	FB	TF	086.06	28.43				
DEEPO	410653.96N / 0705009.85W	Y	FB	TF	118.83	30.45	AT 11000			
En Route Transition										
KYSKY	404652.75N / 0721221.45W	Y		IF					KYSKY.DEEPO2	
CPCOD	405556.17N / 0713745.74W	Y	FB	TF	070.79	27.77				
LIBBE	410015.86N / 0712120.34W	Y	FB	TF	070.74	13.17				
FLAPE	410356.30N / 0710410.55W	Y	FB	TF	074.12	13.50				
DEEPO	410653.96N / 0705009.85W	Y	FB	TF	074.32	11.00	AT 11000			
En Route Transition										
YANTC	413322.81N / 0715956.95W	Y		IF					YANTC.DEEPO2	
MINNK	412140.67N / 0712527.20W	Y	FB	TF	114.08	28.45				
DEEPO	410653.96N / 0705009.85W	Y	FB	TF	118.83	30.45	AT 11000			
Common Route										
DEEPO	410653.96N / 0705009.85W	Y		IF			AT 11000		DEEPO.DEEPO2	
VESSL	410843.02N / 0703531.54W	Y	FB	TF	080.59	11.21				
Runway Transition										
VESSL	410843.02N / 0703531.54W	Y		IF						
BUOYS	411139.46N / 0702505.74W	Y	FB	TF	069.48	08.41	AT/ABOVE 5000			
UFTAC	410700.93N / 0701439.85W	Y	FB	TF	120.43	09.14	AT/ABOVE 2300			
KACK:RWY 6										
Runway Transition										
VESSL	410843.02N / 0703531.54W	Y		IF						
DLPHN	411009.24N / 0702345.76W	Y	FB	TF	080.75	09.00	AT/ABOVE 9000			



FEDERAL AVIATION ADMINISTRATION  
FLIGHT STANDARDS SERVICE  
STAR (DATA RECORD)

Arrival Name DEEPO (RNAV)	Number TWO	STAR Computer Code DEEPO.DEEPO2		Superseded Number ONE		Dated 6/10/2004	Effective Date 17 Apr 2025		
<u>FIX/NAVAID</u>	<u>LAT/LONG</u>	<u>C</u>	<u>FO/FB</u>	<u>LEG TYPE</u>	<u>TC</u>	<u>DIST (NM)</u>	<u>ALTITUDE</u>	<u>SPEED</u>	<u>REMARKS</u>
TOWBT	410755.34N / 0700812.64W	Y	FB	TF	100.66	11.96			
TARIF	411230.23N / 0695356.20W	Y	FO	TF	066.91	11.71	AT 5000		
KACK:RWY 24				FM	044.00				