

FEDERAL AVIATION ADMINISTRATION
 FLIGHT STANDARDS SERVICE
 STANDARD TERMINAL ARRIVAL (STAR)

Bearings, headings, courses, tracks and radials are magnetic. Elevations and altitudes are in feet, MSL. Altitudes are minimum altitudes unless otherwise indicated.
 Ceilings are in feet above airport elevation. Distances are in nautical miles. Visibilities are in statute miles or feet RVR unless otherwise indicated.

Arrival Name PRICY (RNAV)	Number FOUR	STAR Computer Code PRICY.PRICY4	Superseded Number THREE	Dated 11/03/2022	Effective Date 31 Oct 2024
-------------------------------------	-----------------------	---	-----------------------------------	----------------------------	--------------------------------------

TRANSITION ROUTES:

Transition Name	Transition Computer Codes	From FIX/NAVAID	To FIX/NAVAID	Course	Distance	MEA	MOCA	MAA	Crossing Altitudes / Fixes
BAYNE	BAYNE.PRICY4	BAYNE	BAYNE						
			BULKS	117.16	29.50	FL180	2000	BETWEEN FL190 AND FL200	
BULKS	BULKS.PRICY4	BULKS	PRICY	071.64	25.92	12000	2000	BETWEEN 13000 AND 16000	
			BULKS	071.64	25.92	12000	2000	BETWEEN 13000 AND 16000	
CHIVE	CHIVE.PRICY4	CHIVE	CHIVE						BETWEEN FL240 AND FL260
			DECKS	095.83	31.50	FL180	2000	AT/ABOVE FL210	
			BULKS	096.90	13.91	FL180	2000	BETWEEN FL190 AND FL200	
CHRG	CHRG.PRICY4	CHRG	PRICY	071.64	25.92	12000	2000	BETWEEN 13000 AND 16000	
			CHRG						
			DAAWG	092.84	48.83	FL180	2000		
CHIVE	CHIVE.PRICY4	CHIVE	CHIVE	093.27	34.63	FL180	2000	BETWEEN FL240 AND FL260	
			DECKS	095.83	31.50	FL180	2000	AT/ABOVE FL210	
			BULKS	096.90	13.91	FL180	2000	BETWEEN FL190 AND FL200	
CIGAR	CIGAR.PRICY4	CIGAR	PRICY	071.64	25.92	12000	2000	BETWEEN 13000 AND 16000	
			DAAWG	070.77	51.02	FL180	2000		
			CHIVE	093.27	34.63	FL180	2000	BETWEEN FL240 AND FL260	
DOZES	DOZES.PRICY4	DOZES	DECKS	095.83	31.50	FL180	2000	AT/ABOVE FL210	
			BULKS	096.90	13.91	FL180	2000	BETWEEN FL190 AND FL200	
			PRICY	071.64	25.92	12000	2000	BETWEEN 13000 AND 16000	
DOZES	DOZES.PRICY4	DOZES	DOZES					AT FL240	
			QUAYL	070.00	34.59	FL180	2000	AT/ABOVE FL210	
			BULKS	070.27	13.91	FL180	2000	BETWEEN FL190 AND FL200	
			PRICY	071.64	25.92	12000	2000	BETWEEN 13000 AND 16000	



FEDERAL AVIATION ADMINISTRATION
 FLIGHT STANDARDS SERVICE
 STANDARD TERMINAL ARRIVAL (STAR)

Bearings, headings, courses, tracks and radials are magnetic. Elevations and altitudes are in feet, MSL. Altitudes are minimum altitudes unless otherwise indicated.
 Ceilings are in feet above airport elevation. Distances are in nautical miles. Visibilities are in statute miles or feet RVR unless otherwise indicated.

Arrival Name	Number	STAR Computer Code	Superseded Number	Dated	Effective Date
PRICY (RNAV)	FOUR	PRICY.PRICY4	THREE	11/03/2022	31 Oct 2024

ARRIVAL ROUTE DESCRIPTION:

MCO: FROM PRICY ON TRACK 071.34/4.90 TO BOCCE, THEN ON TRACK 068.30/5.11 TO JUMBA.

LANDING MCO RWY 17L/R, 18L/R: FROM JUMBA ON TRACK 068.22/15.48 TO CROSS TAYYE BETWEEN 10000 AND 12000, THEN ON TRACK 059.88/7.49 TO ARHIP, THEN ON TRACK 005.99/3.25 TO CROSS GIRAF AT OR ABOVE 8000 AND AT 220 KIAS, THEN ON TRACK 005.99/6.94 TO DVOLA, THEN ON TRACK 006.02/7.96 TO CROSS LYENS AT 5000 AND AT 210 KIAS, THEN ON TRACK 006.02. EXPECT RADAR VECTORS TO FINAL APPROACH COURSE.

LANDING MCO RWY 35L/R, 36L/R: FROM JUMBA ON TRACK 103.82/8.95 TO CROSS AMADS AT OR BELOW 9000, THEN ON TRACK 103.90/11.00 TO CROSS LORRA AT 7000 AND AT 210 KIAS, THEN ON HEADING 096.00. EXPECT RADAR VECTORS TO FINAL APPROACH COURSE.

LANDING LEE/SFB/ISM/MLB/ORL: FROM PRICY ON TRACK 071.34/4.90 TO BOCCE, THEN ON TRACK 056.00/5.72 TO CROSS OTKEE AT 11000, THEN ON TRACK 056.00. EXPECT RADAR VECTORS TO FINAL APPROACH COURSE.

PBN REQUIREMENT NOTES:

- RNAV 1 - DME/DME/IRU OR GPS
- CHRG TRANSITION - RNAV 1 - GPS.
- CIGAR TRANSITION - RNAV 1 - GPS.

EQUIPMENT REQUIREMENT NOTES:

RADAR REQUIRED

PROCEDURAL DATA NOTES:

- NOTE: JET AIRCRAFT ONLY
- NOTE: DO NOT FILE BULKS, CHIVE, OR DOZES TRANSITION - TO BE ASSIGNED BY ATC.
- NOTE: LANDING SOUTH USE RWY 18R TRANSITION, LANDING NORTH USE RWY 36L TRANSITION.

FIXES AND/OR HOLDING PATTERNS:

- CHART HOLDING AT BAYNE: HOLD NW, LT, 137.00 INBOUND, 10 NM LEGS.
- CHART HOLDING AT BULKS: HOLD W, RT, 096.90 INBOUND, 10 NM LEGS.
- CHART HOLDING AT CHIVE: HOLD W, RT, 093.27 INBOUND, 10 NM LEGS.
- CHART HOLDING AT DAAWG: HOLD W, RT, 091.84 INBOUND, 10 NM LEGS.
- CHART HOLDING AT DECKS: HOLD W, RT, 095.83 INBOUND, 10 NM LEGS.
- CHART HOLDING AT DOZES: HOLD W, RT, 070.00 INBOUND, 10 NM LEGS.
- CHART HOLDING AT FAZES: HOLD S, LT, 349.33 INBOUND, 10 NM LEGS.
- CHART HOLDING AT MOANS: HOLD SW, LT, 026.49 INBOUND, 10 NM LEGS.
- CHART HOLDING AT PRICY: HOLD W, RT, 071.64 INBOUND, 10 NM LEGS.
- CHART HOLDING AT TOSHE: HOLD S, LT, 340.00 INBOUND, 10 NM LEGS.
- CHART HAMMY, EXBAN AS STAND-ALONE WAYPOINTS.

COMMUNICATIONS:

CHART: ORLANDO APP CON



FEDERAL AVIATION ADMINISTRATION
 FLIGHT STANDARDS SERVICE
 STANDARD TERMINAL ARRIVAL (STAR)

Bearings, headings, courses, tracks and radials are magnetic. Elevations and altitudes are in feet, MSL. Altitudes are minimum altitudes unless otherwise indicated. Ceilings are in feet above airport elevation. Distances are in nautical miles. Visibilities are in statute miles or feet RVR unless otherwise indicated.

Arrival Name PRICY (RNAV)	Number FOUR	STAR Computer Code PRICY.PRICY4	Superseded Number THREE	Dated 11/03/2022	Effective Date 31 Oct 2024
-------------------------------------	-----------------------	---	-----------------------------------	----------------------------	--------------------------------------

AIRPORTS SERVED:

<u>AIRPORT ID</u>	<u>CITY</u>	<u>STATE</u>
MCO	ORLANDO	FL
ORL	ORLANDO	FL
ISM	ORLANDO	FL
LEE	LEESBURG	FL
MLB	MELBOURNE	FL
SFB	ORLANDO	FL

LOST COMMUNICATIONS PREFERENCES:

REMARKS:

ENVIRONMENTAL REVIEW UNDER ORDER 1050.1 (LATEST EDITION) AND THE NOISE SCREENING HAVE BEEN ACCOMPLISHED.

ADDITIONAL FLIGHT DATA:

DME/DME ASSESSMENT: SAT (RNP 2.0)
 MAG VAR: MCO 06W/2015
 CHART AT LYENS TERMINUS: KMCO LDG RWY 17L/R, 18L/R
 CHART AT LORRA TERMINUS: KMCO LDG RWY 35L/R, 36L/R
 CHART AT OTKEE TERMINUS: LDG LEE/SFB/ISM/MLB/ORL

FLIGHT INSPECTED BY:

Digitally signed by

ORGANIZATION: **DATE:**

WILLIAM M YINGLING

ERIC N SUSKI

FPO

07/24/2024

Flight Inspected Signature: _____

Jul 26, 2024

DEVELOPED BY:

Digitally signed by

AJV-A431 4/26/2024

WESTLEY OWENS

ERIC N SUSKI

Developed By Signature: _____

Jul 26, 2024

APPROVED BY:

Digitally signed by

AJV-A431

ERIC SUSKI

Approved By Signature: _____

ERIC N SUSKI

Jul 26, 2024

CHANGES:

- ADDED SPEED RESTRICTION OF 250K AT PRICY.
- DELETED SPEED RESTRICTION OF 250K AT TAYYE AND OTKEE.
- AMENDED CHART NOTE FROM "FOR VERTICAL NAVIGATION PLANNING, LANDING SOUTH, SELECT RWY 18R, LANDING NORTH SELECT RWY 36L" TO READ "LANDING SOUTH USE RWY 18R TRANSITION, LANDING NORTH USE RWY 36L TRANSITION."
- REMOVED K IDENT FROM ALL AIRPORT ID(S).



FEDERAL AVIATION ADMINISTRATION
FLIGHT STANDARDS SERVICE
STANDARD TERMINAL ARRIVAL (STAR)

Bearings, headings, courses, tracks and radials are magnetic. Elevations and altitudes are in feet, MSL. Altitudes are minimum altitudes unless otherwise indicated.
Ceilings are in feet above airport elevation. Distances are in nautical miles. Visibilities are in statute miles or feet RVR unless otherwise indicated.

Arrival Name	Number	STAR Computer Code	Superseded Number	Dated	Effective Date
PRICY (RNAV)	FOUR	PRICY.PRICY4	THREE	11/03/2022	31 Oct 2024

REASONS:

1. ATC REQUEST.
2. ATC REQUEST.
3. CHART NOTE STANDARDIZATION.
4. PER THE 8260.19J.

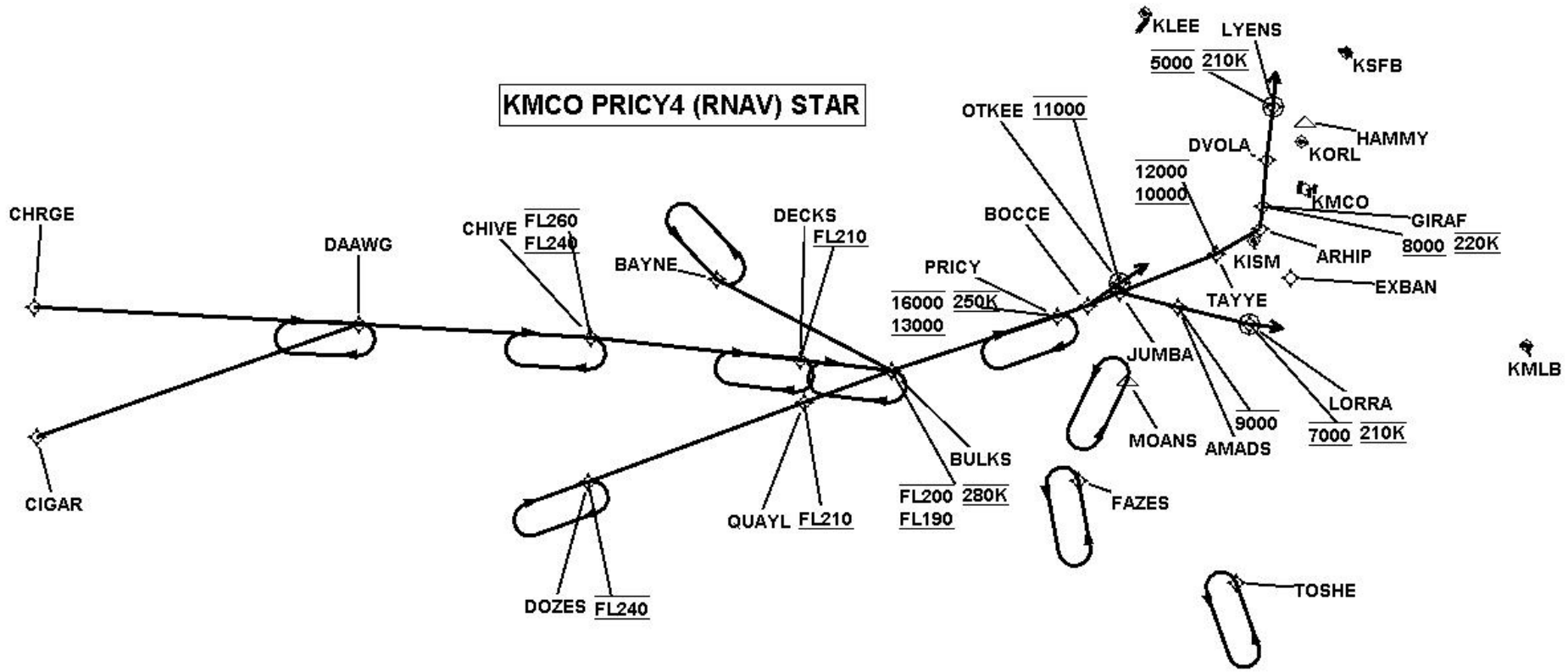


FEDERAL AVIATION ADMINISTRATION
FLIGHT STANDARDS SERVICE
STANDARD TERMINAL ARRIVAL (STAR)

Bearings, headings, courses, tracks and radials are magnetic. Elevations and altitudes are in feet, MSL. Altitudes are minimum altitudes unless otherwise indicated. Ceilings are in feet above airport elevation. Distances are in nautical miles. Visibilities are in statute miles or feet RVR unless otherwise indicated.

Arrival Name	Number	STAR Computer Code	Superseded Number	Dated	Effective Date
PRICY (RNAV)	FOUR	PRICY.PRICY4	THREE	11/03/2022	31 Oct 2024

Graphic Depiction 1

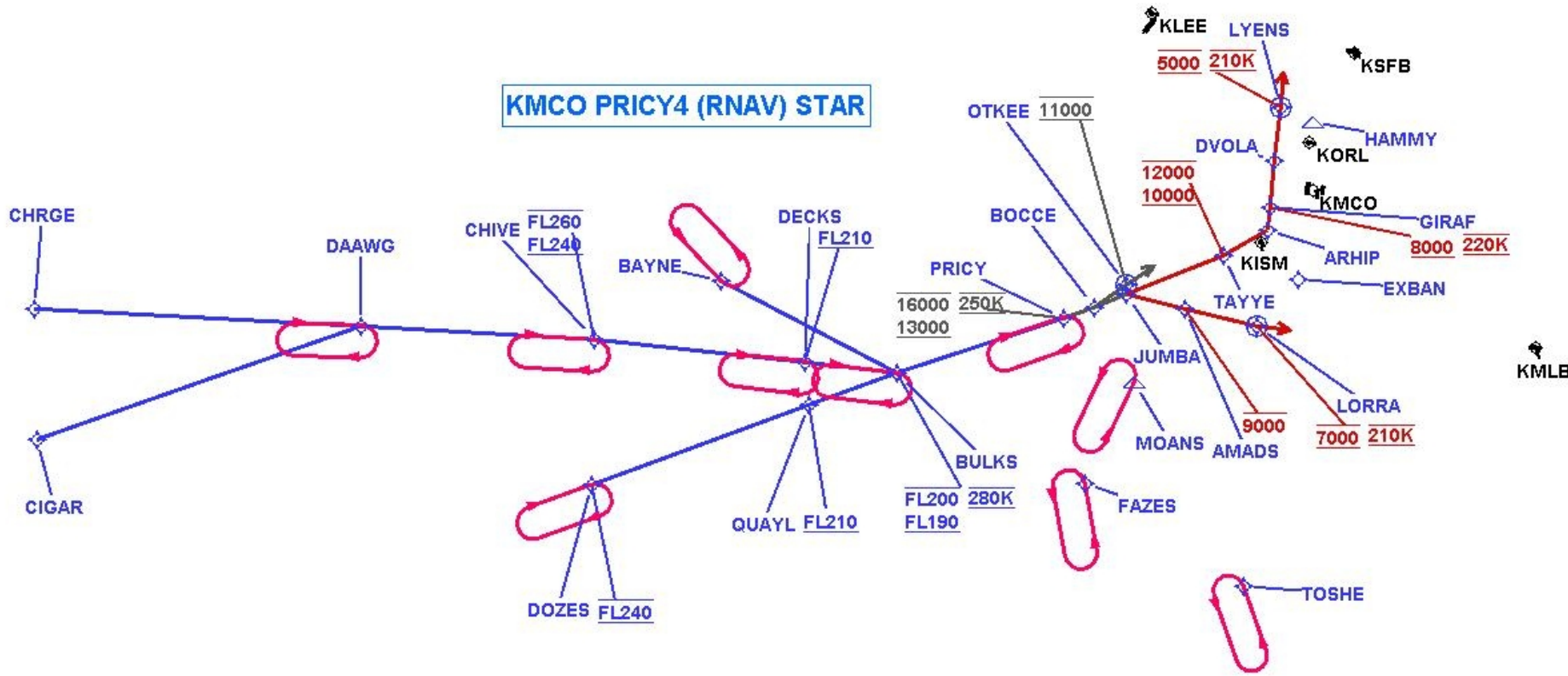


FEDERAL AVIATION ADMINISTRATION
FLIGHT STANDARDS SERVICE
STANDARD TERMINAL ARRIVAL (STAR)

Bearings, headings, courses, tracks and radials are magnetic. Elevations and altitudes are in feet, MSL. Altitudes are minimum altitudes unless otherwise indicated. Ceilings are in feet above airport elevation. Distances are in nautical miles. Visibilities are in statute miles or feet RVR unless otherwise indicated.

Arrival Name	Number	STAR Computer Code	Superseded Number	Dated	Effective Date
PRICY (RNAV)	FOUR	PRICY.PRICY4	THREE	11/03/2022	31 Oct 2024

Graphic Depiction 2

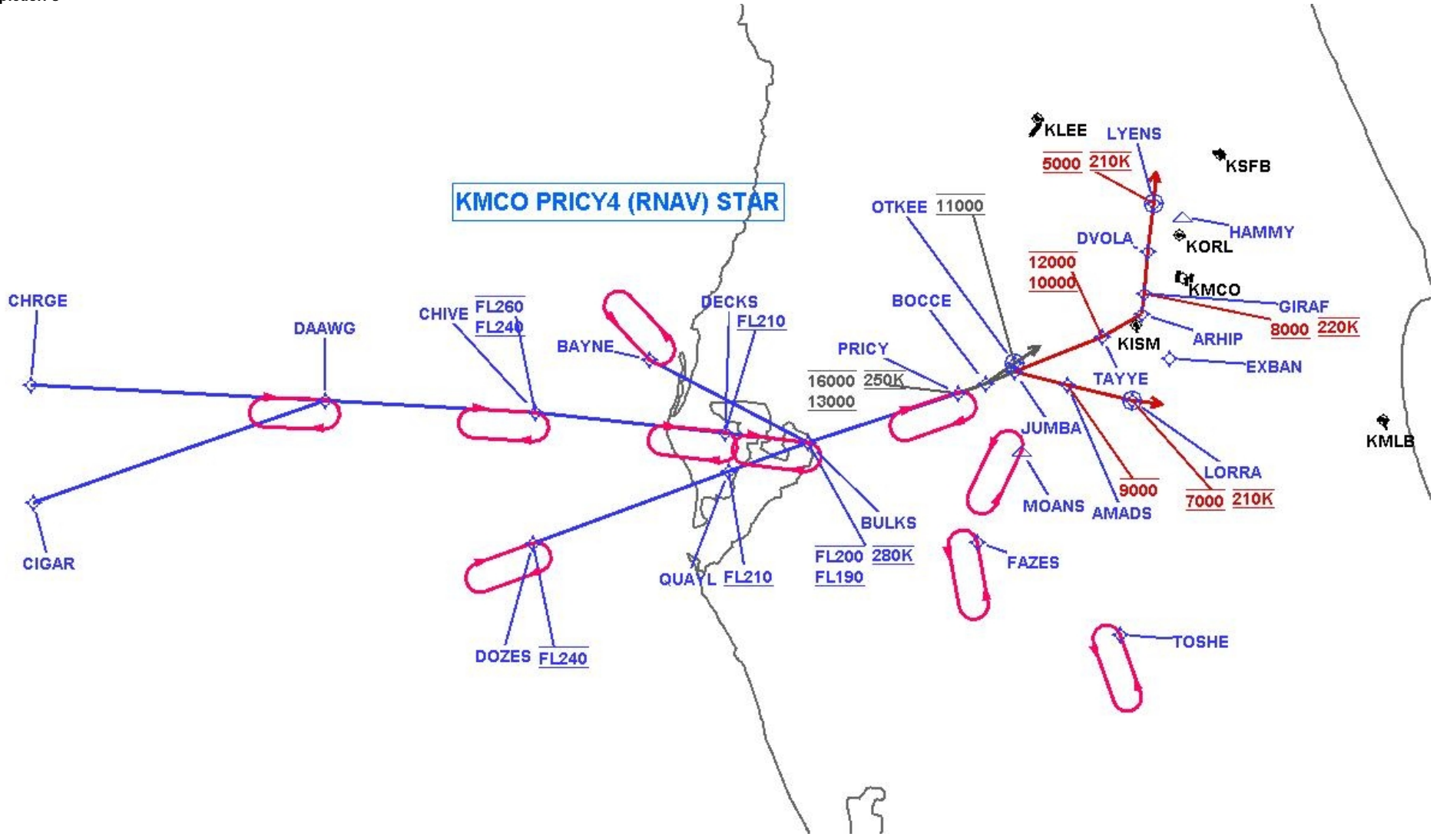


FEDERAL AVIATION ADMINISTRATION
FLIGHT STANDARDS SERVICE
STANDARD TERMINAL ARRIVAL (STAR)

Bearings, headings, courses, tracks and radials are magnetic. Elevations and altitudes are in feet, MSL. Altitudes are minimum altitudes unless otherwise indicated.
Ceilings are in feet above airport elevation. Distances are in nautical miles. Visibilities are in statute miles or feet RVR unless otherwise indicated.

Arrival Name	Number	STAR Computer Code	Superseded Number	Dated	Effective Date
PRICY (RNAV)	FOUR	PRICY.PRICY4	THREE	11/03/2022	31 Oct 2024

Graphic Depiction 3



FEDERAL AVIATION ADMINISTRATION
 FLIGHT STANDARDS SERVICE
 STAR (DATA RECORD)

Arrival Name PRICY (RNAV)	Number FOUR	STAR Computer Code PRICY.PRICY4		Superseded Number THREE		Dated 11/03/2022	Effective Date 31 Oct 2024		
FIX/NAVAID	LAT/LONG	C	FO/FB	LEG TYPE	TC	DIST (NM)	ALTITUDE	SPEED	REMARKS
En Route Transition									
BAYNE	280320.24N / 0825541.52W	Y		IF					BAYNE.PRICY4
BULKS	275236.12N / 0822438.96W	Y	FB	TF	111.16	29.50	FL190BFL200	AT 280K	
PRICY	280316.76N / 0815757.83W	Y	FB	TF	065.64	25.92	13000B16000	AT 250K	
En Route Transition									
BULKS	275236.12N / 0822438.96W	Y		IF			FL190BFL200	AT 280K	BULKS.PRICY4
PRICY	280316.76N / 0815757.83W	Y	FB	TF	065.64	25.92	13000B16000	AT 250K	
En Route Transition									
CHIVE	275249.14N / 0831553.44W	Y		IF			FL240BFL260		CHIVE.PRICY4
DECKS	275250.13N / 0824020.64W	Y	FB	TF	089.83	31.50	AT/ABOVE FL210		
BULKS	275236.12N / 0822438.96W	Y	FB	TF	090.90	13.91	FL190BFL200	AT 280K	
PRICY	280316.76N / 0815757.83W	Y	FB	TF	065.64	25.92	13000B16000	AT 250K	
En Route Transition									
CHRG	274844.48N / 0844955.93W	Y		IF					CHRG.PRICY4
DAAWG	275115.40N / 0835455.52W	Y	FB	TF	086.84	48.83			
CHIVE	275249.14N / 0831553.44W	Y	FB	TF	087.27	34.63	FL240BFL260		
DECKS	275250.13N / 0824020.64W	Y	FB	TF	089.83	31.50	AT/ABOVE FL210		
BULKS	275236.12N / 0822438.96W	Y	FB	TF	090.90	13.91	FL190BFL200	AT 280K	
PRICY	280316.76N / 0815757.83W	Y	FB	TF	065.64	25.92	13000B16000	AT 250K	
En Route Transition									
CIGAR	272936.61N / 0844659.51W	Y		IF					CIGAR.PRICY4
DAAWG	275115.40N / 0835455.52W	Y	FB	TF	064.77	51.02			
CHIVE	275249.14N / 0831553.44W	Y	FB	TF	087.27	34.63	FL240BFL260		
DECKS	275250.13N / 0824020.64W	Y	FB	TF	089.83	31.50	AT/ABOVE FL210		



FEDERAL AVIATION ADMINISTRATION
 FLIGHT STANDARDS SERVICE
 STAR (DATA RECORD)

Arrival Name	Number	STAR Computer Code		Superseded Number		Dated	Effective Date		
PRICY (RNAV)	FOUR	PRICY.PRICY4		THREE		11/03/2022	31 Oct 2024		
FIX/NAVAID	LAT/LONG	C	FO/FB	LEG TYPE	TC	DIST (NM)	ALTITUDE	SPEED	REMARKS
BULKS	275236.12N / 0822438.96W	Y	FB	TF	090.90	13.91	FL190BFL200	AT 280K	
PRICY	280316.76N / 0815757.83W	Y	FB	TF	065.64	25.92	13000B16000	AT 250K	
En Route Transition									
DOZES	273125.83N / 0831350.46W	Y		IF			AT FL240		DOZES.PRICY4
QUAYL	274633.59N / 0823847.40W	Y	FB	TF	064.00	34.59	AT/ABOVE FL210		
BULKS	275236.12N / 0822438.96W	Y	FB	TF	064.27	13.91	FL190BFL200	AT 280K	
PRICY	280316.76N / 0815757.83W	Y	FB	TF	065.64	25.92	13000B16000	AT 250K	
Common Route									
PRICY	280316.76N / 0815757.83W	Y		IF			13000B16000	AT 250K	PRICY.PRICY4
BOCCE	280519.65N / 0815255.73W	Y	FB	TF	065.34	04.90			
JUMBA	280742.38N / 0814748.84W	Y	FB	TF	062.30	05.11			
Common Route									
PRICY	280316.76N / 0815757.83W	Y		IF			13000B16000	AT 250K	PRICY.PRICY4
BOCCE	280519.65N / 0815255.73W	Y	FB	TF	065.34	04.90			
OTKEE	280900.61N / 0814758.51W	Y	FO	TF	050.00	05.72	AT 11000		
KISM,KLEE,KMLB, KORL,KSFB				FM	050.00				
Runway Transition									
JUMBA	280742.38N / 0814748.84W	Y		IF					
TAYYE	281455.62N / 0813218.23W	Y	FB	TF	062.22	15.48	10000B12000		
ARHIP	281921.10N / 0812526.85W	Y	FB	TF	053.88	07.49			
GIRAF	282236.62N / 0812526.90W	Y	FB	TF	359.99	03.25	AT/ABOVE 8000	AT 220K	
DVOLA	282933.86N / 0812527.00W	Y	FB	TF	359.99	06.94			



FEDERAL AVIATION ADMINISTRATION
 FLIGHT STANDARDS SERVICE
 STAR (DATA RECORD)

Arrival Name	Number	STAR Computer Code	Superseded Number	Dated	Effective Date				
PRICY (RNAV)	FOUR	PRICY.PRICY4	THREE	11/03/2022	31 Oct 2024				
<u>FIX/NAVAID</u>	<u>LAT/LONG</u>	<u>C</u>	<u>FO/FB</u>	<u>LEG TYPE</u>	<u>TC</u>	<u>DIST (NM)</u>	<u>ALTITUDE</u>	<u>SPEED</u>	<u>REMARKS</u>
LYENS	283732.43N / 0812526.85W	Y	FO	TF	000.02	07.96	AT 5000	AT 210K	
KMCO:RWY 17L,RWY 17R,RWY 18L,RWY 18R				FM	000.02				
Runway Transition									
JUMBA	280742.38N / 0814748.84W	Y		IF					
AMADS	280628.71N / 0813747.00W	Y	FB	TF	097.82	08.95	AT/BELOW 9000		
LORRA	280457.20N / 0812527.91W	Y	FO	TF	097.90	11.00	AT 7000	AT 210K	
KMCO:RWY 35L,RWY 35R,RWY 36L,RWY 36R				VM	090.00				

