

FEDERAL AVIATION ADMINISTRATION
FLIGHT STANDARDS SERVICE
STANDARD TERMINAL ARRIVAL (STAR)

Bearings, headings, courses, tracks and radials are magnetic. Elevations and altitudes are in feet, MSL. Altitudes are minimum altitudes unless otherwise indicated.
Ceilings are in feet above airport elevation. Distances are in nautical miles. Visibilities are in statute miles or feet RVR unless otherwise indicated.

Arrival Name	Number	STAR Computer Code	Superseded Number	Dated	Effective Date
CLIPR (RNAV)	THREE	CLIPR.CLIPR3	TWO	03/29/2018	10 AUG 2023

TRANSITION ROUTES:

Transition Name	Transition Computer Codes	From FIX/NAVAID	To FIX/NAVAID	Course	Distance	MEA	MOCA	MAA	Crossing Altitudes / Fixes
MODENA	MXE.CLIPR3	MXE VORTAC	MXE VORTAC						
			NUGGY	247.00	18.72	11000	2000		
			TROYZ	246.79	06.28	11000	1900		
			BELAY	246.72	10.24	8000	1900		
			TRISH	225.00	06.09	8000	1900		
			CLIPR	224.97	04.00	8000	1900		AT 12000
			BAL VORTAC	224.94	20.00	6000	1800		AT 10000
			EYESS	233.76	16.24	4000	1600		

ARRIVAL ROUTE DESCRIPTION:

LANDING RWY 1, 4, 33: FROM EYESS ON TRACK 230.39/3.18 TO BRUNC, THEN ON TRACK 192.36/9.07 TO FELTY, THEN ON TRACK 186.64/5.46 TO HITEK, THEN ON TRACK 186.93/15.78 TO CAVDI, THEN ON HEADING 186.93. EXPECT RADAR VECTORS TO FINAL APPROACH COURSE.

LANDING RWY 15, 19, 22: FROM EYESS ON TRACK 283.55/6.11 TO EDDWD, THEN ON TRACK 327.69/4.88 TO MEGGS, THEN ON TRACK 326.88/8.20 TO NAYES, THEN ON HEADING 326.88. EXPECT RADAR VECTORS TO FINAL APPROACH COURSE.

PBN REQUIREMENT NOTES:

RNAV 1 - DME/DME/IRU OR GPS

EQUIPMENT REQUIREMENT NOTES:

RADAR REQUIRED

PROCEDURAL DATA NOTES:

NOTE: PROHIBITED AREA (P-56) 1.5 NM NORTH OF DCA-AVOID-SURFACE TO FL180.

FIXES AND/OR HOLDING PATTERNS:

CHART HOLDING AT SKILS: HOLD N, RT, 195.02 INBOUND, 4 NM LEGS, 210 KIAS.

CHART HOLDING AT TRISH: HOLD NE, RT, 225.00 INBOUND, 7 NM LEGS, 210 KIAS.

COMMUNICATIONS:

CHART: POTOMAC TRACON

AIRPORTS SERVED:

AIRPORT ID
KDCA

CITY
WASHINGTON

STATE
DC

LOST COMMUNICATIONS PREFERENCES:

QUALITY
14
CHECKED

FEDERAL AVIATION ADMINISTRATION
FLIGHT STANDARDS SERVICE
STANDARD TERMINAL ARRIVAL (STAR)

Bearings, headings, courses, tracks and radials are magnetic. Elevations and altitudes are in feet, MSL. Altitudes are minimum altitudes unless otherwise indicated.
Ceilings are in feet above airport elevation. Distances are in nautical miles. Visibilities are in statute miles or feet RVR unless otherwise indicated.

Arrival Name	Number	STAR Computer Code	Superseded Number	Dated	Effective Date
CLIPR (RNAV)	THREE	CLIPR.CLIPR3	TWO	03/29/2018	10 AUG 2023

REMARKS:

THE ENVIRONMENTAL REVIEW UNDER ORDER 1050.1 (LATEST EDITION) AND THE NOISE SCREENING HAVE BEEN ACCOMPLISHED.

ADDITIONAL FLIGHT DATA:

DME/DME ASSESSMENT: SAT (RNP 2.0)
MAG VAR: KDCA 11W/2020.
CHART P-56A.
CHART P-56B.
CHART AT CAVDI TERMINUS: KDCA LDG RWY 01, 04, 33.
CHART AT NAYES TERMINUS: KDCA LDG RWY 15, 19, 22.

FLIGHT INSPECTED BY:

JEREMY R VIRTS

ORGANIZATION:

FPO

DATE:

04/18/2023

Flight Inspected Signature:

Digitally signed by

ALLAN WILL

Apr 19, 2023

DEVELOPED BY:

DAVID JOHNSON; CHRISTIAN KARNS

ESC PBN CO-
LEADS

09/29/2022

Developed By Signature:

Digitally signed by

ALLAN WILL

Apr 19, 2023

APPROVED BY:

ALLAN WILL, MANAGER

AJV-A423

Approved By Signature:

Digitally signed by

ALLAN WILL

Apr 19, 2023

CHANGES:

1. ADDED RWYS 4, 13 TO RWY 1 ARRIVAL DESCRIPTION.
2. ADDED RWYS 15, 22 TO RWY 19 ARRIVAL DESCRIPTION; REMOVED WORD DEPART.
3. REMOVED NOTE NON-TURBOJETS: EXPECT TO CROSS NUGGY AT 11000.
4. REMOVED NOTE TURBOJETS: EXPECT TO CROSS TRISH AT 12000.
5. REMOVED NOTE TURBOJETS: EXPECT TO CROSS BAL VORTAC AT 10000.
6. REMOVED NOTE CROSS BAL VORTAC AT 250 KIAS.
7. ADDED: "AT 12000" CROSSING ALTITUDE AT CLIPPR.
8. REMOVED MEA VALUES FROM ARRIVAL DESCRIPTION.
9. ADDED TERMINUS DATA.
10. REMOVED RECOMMENDED NAVAID FROM 17.2.
11. REMOVED AIRPORT NAME FROM AIRPORTS SERVED.
12. ADDED MOCA DATA.
13. ADDED AT 10000 CROSSING ALTITUDE AT BAL VORTAC AND 250 KIAS.

REASONS:

- 1-2. ATC REQUEST, IMPROVE FLOW AND EFFICIENCY INTO KDCA.
- 3-5. IAW 8260.19I, 4-5-2E.



FEDERAL AVIATION ADMINISTRATION
FLIGHT STANDARDS SERVICE
STANDARD TERMINAL ARRIVAL (STAR)

Bearings, headings, courses, tracks and radials are magnetic. Elevations and altitudes are in feet, MSL. Altitudes are minimum altitudes unless otherwise indicated.
Ceilings are in feet above airport elevation. Distances are in nautical miles. Visibilities are in statute miles or feet RVR unless otherwise indicated.

Arrival Name	Number	STAR Computer Code	Superseded Number	Dated	Effective Date
CLIPR (RNAV)	THREE	CLIPR.CLIPR3	TWO	03/29/2018	10 AUG 2023

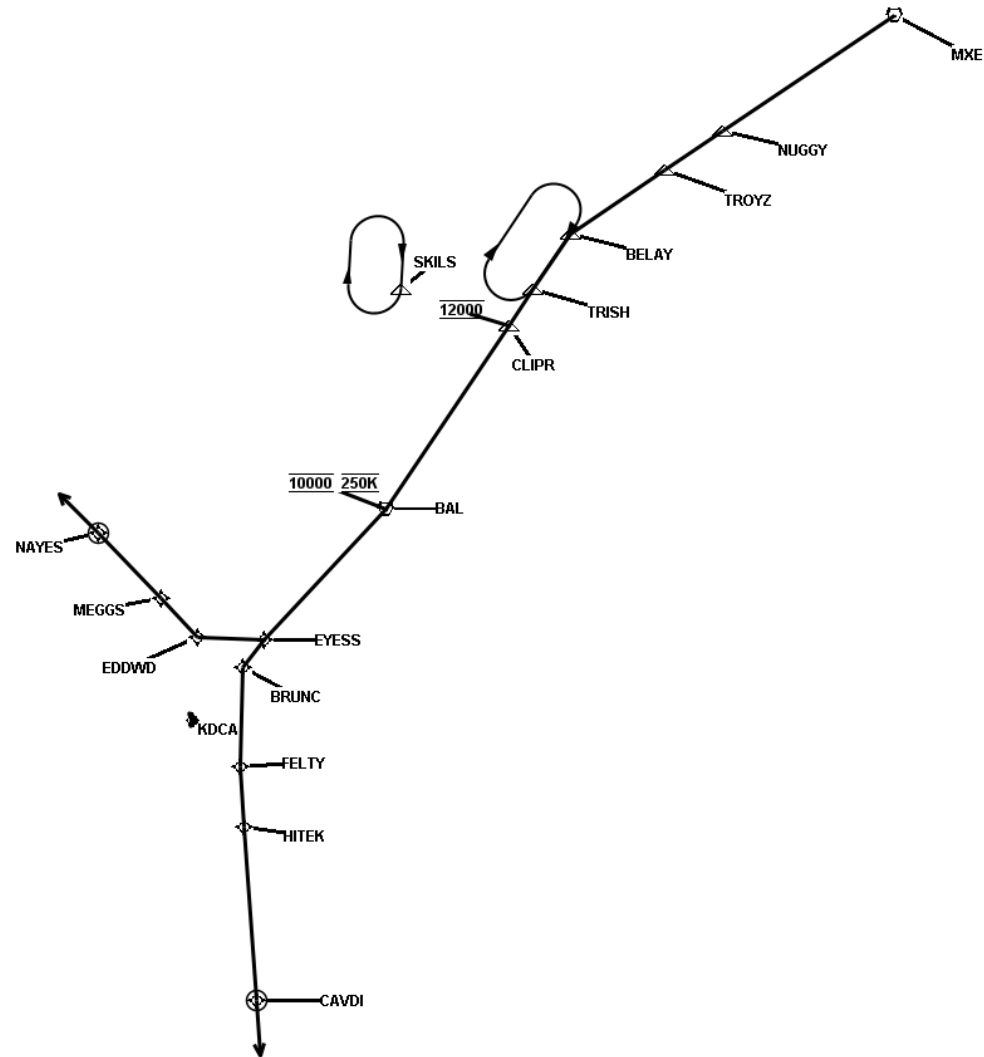
6. ATC REQUEST.
7. ATC REQUEST, IMPROVE FLOW AND EFFICIENCY INTO KDCA.
8. IAW 8260.3E, 2-2-7E(3).
9. IAW 8260.19I, 4-5-2H(2).
- 10, 11. NO LONGER DOCUMENTED.
12. IAW 8260.19I, 4-5-12B(8).
13. ATC REQUEST, IMPROVE FLOW AND EFFICIENCY INTO KDCA.



FEDERAL AVIATION ADMINISTRATION
FLIGHT STANDARDS SERVICE
STANDARD TERMINAL ARRIVAL (STAR)

Bearings, headings, courses, tracks and radials are magnetic. Elevations and altitudes are in feet, MSL. Altitudes are minimum altitudes unless otherwise indicated.
Ceilings are in feet above airport elevation. Distances are in nautical miles. Visibilities are in statute miles or feet RVR unless otherwise indicated.

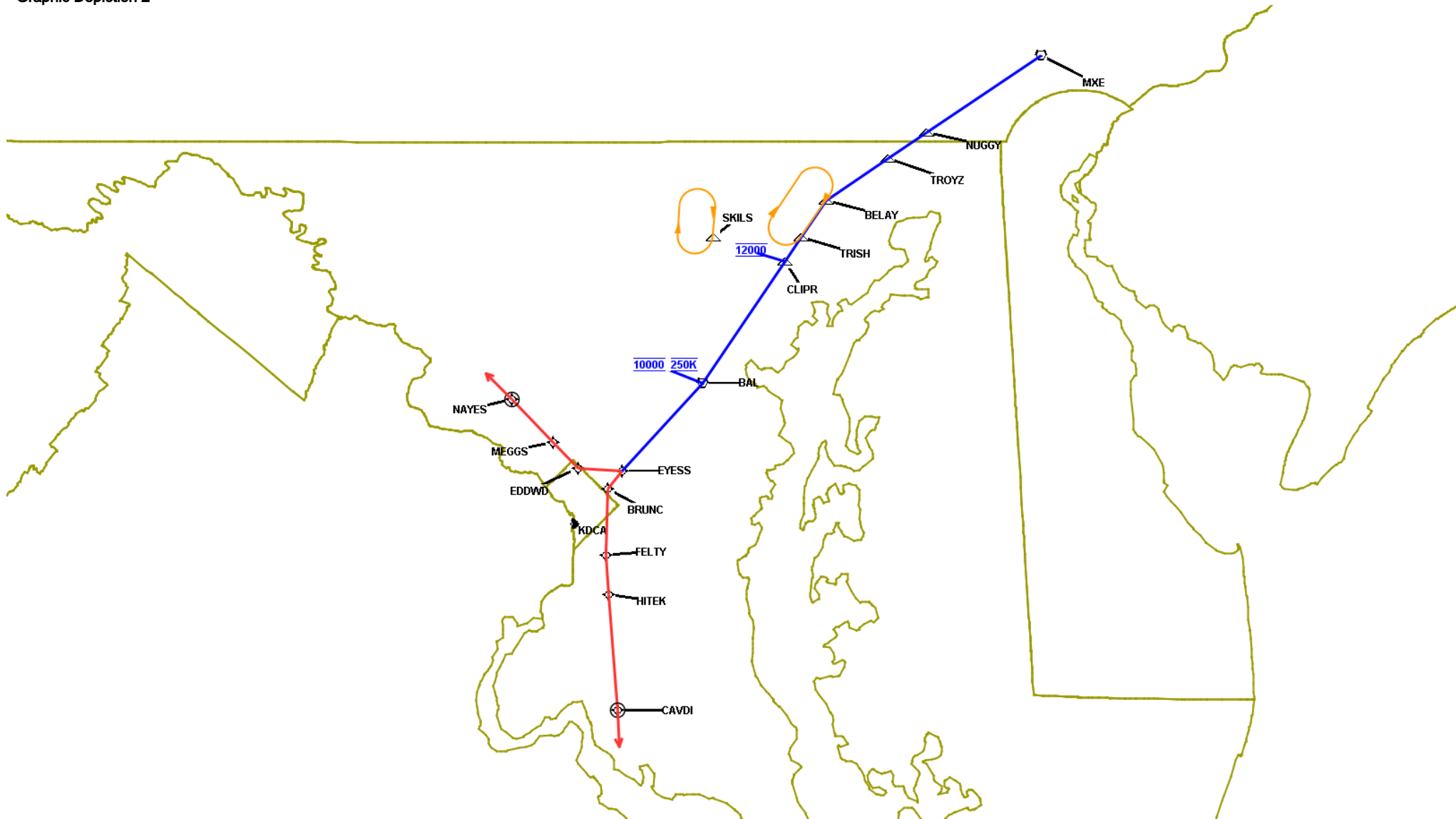
Arrival Name	Number	STAR Computer Code	Superseded Number	Dated	Effective Date
CLIPR (RNAV)	THREE	CLIPR.CLIPR3	TWO	03/29/2018	10 AUG 2023
Graphic Depiction 1					



FEDERAL AVIATION ADMINISTRATION
FLIGHT STANDARDS SERVICE
STANDARD TERMINAL ARRIVAL (STAR)

Bearings, headings, courses, tracks and radials are magnetic. Elevations and altitudes are in feet, MSL. Altitudes are minimum altitudes unless otherwise indicated.
Ceilings are in feet above airport elevation. Distances are in nautical miles. Visibilities are in statute miles or feet RVR unless otherwise indicated.

Arrival Name	Number	STAR Computer Code	Superseded Number	Dated	Effective Date
CLIPR (RNAV)	THREE	CLIPR.CLIPR3	TWO	03/29/2018	10 AUG 2023
Graphic Depiction 2					



**FEDERAL AVIATION ADMINISTRATION
FLIGHT STANDARDS SERVICE
STAR (DATA RECORD)**

Arrival Name CLIPR (RNAV)		Number THREE		STAR Computer Code CLIPR.CLIPR3		Superseded Number TWO		Dated 03/29/2018	Effective Date 10 AUG 2023
<u>FIX/NAVAID</u>	<u>LAT/LONG</u>	<u>C</u>	<u>FO/FB</u>	<u>LEG TYPE</u>	<u>TC</u>	<u>DIST (NM)</u>	<u>ALTITUDE</u>	<u>SPEED</u>	<u>REMARKS</u>
En Route Transition									
MXE VORTAC	395504.98N / 0754014.96W	Y		IF					MXE.CLIPR3
NUGGY	394434.56N / 0760022.21W	Y	FB	TF	236.00	18.72			
TROYZ	394102.40N / 0760705.67W	Y	FB	TF	235.79	06.28			
BELAY	393515.67N / 0761802.00W	Y	FB	TF	235.72	10.24			
TRISH	393012.43N / 0762225.99W	Y	FB	TF	214.00	06.09			
CLIPR	392653.17N / 0762519.09W	Y	FB	TF	213.97	04.00	AT 12000		
BAL VORTAC	391015.83N / 0763940.52W	Y	FB	TF	213.94	20.00	AT 10000	AT 250K	
EYESS	385818.75N / 0765348.84W	Y	FB	TF	222.76	16.24			
Runway Transition									
EYESS	385818.75N / 0765348.84W	Y		IF					
BRUNC	385550.89N / 0765624.24W	Y	FB	TF	219.39	03.18			
FELTY	384646.15N / 0765640.79W	Y	FB	TF	181.36	09.07			
HITEK	384119.00N / 0765609.00W	Y	FB	TF	175.64	05.46			
CAVDI	382533.43N / 0765443.49W	Y	FO	TF	175.93	15.78			
KDCA:RWY 1, RWY 4, RWY 33				VM	175.93				
Runway Transition									
EYESS	385818.75N / 0765348.84W	Y		IF					
EDDWD	385834.80N / 0770138.25W	Y	FB	TF	272.55	06.11			
MEGGS	390207.88N / 0770555.86W	Y	FB	TF	316.69	04.88			
NAYES	390801.02N / 0771315.81W	Y	FO	TF	315.88	08.20			
KDCA:RWY 15, RWY 19, RWY 22				VM	315.88				

