

FEDERAL AVIATION ADMINISTRATION  
FLIGHT STANDARDS SERVICE  
STANDARD TERMINAL ARRIVAL (STAR)

Bearings, headings, courses, tracks and radials are magnetic. Elevations and altitudes are in feet, MSL. Altitudes are minimum altitudes unless otherwise indicated.  
Ceilings are in feet above airport elevation. Distances are in nautical miles. Visibilities are in statute miles or feet RVR unless otherwise indicated.

Arrival Name	Number	STAR Computer Code	Superseded Number	Dated	Effective Date
<b>RNDZ (RNAV)</b>	<b>THREE</b>	<b>RNDZ.RNDRZ3</b>	<b>TWO</b>	<b>05/19/2022</b>	<b>31OCT2024</b>

TRANSITION ROUTES:

Transition Name	Transition Computer Codes	From FIX/NAVAID	To FIX/NAVAID	Course	Distance	MEA	MOCA	MAA	Crossing Altitudes / Fixes
MISEN	MISEN.RNDRZ3	MISEN	MISEN						AT/ABOVE FL240
			TEDDE	035.67	10.80	17000	7100		
			WATEV	037.28	08.53	13000	7100		AT/ABOVE FL190
			RNDRZ	037.36	24.40	13000	7100		BETWEEN 13000 AND 16000
NEEDLES	EED.RNDRZ3	EED VORTAC	EED VORTAC						
			ZELMA	260.65	42.31	17000	9800		BETWEEN FL190 AND FL230
			MIYKE	326.47	33.29	13000	9800		
			RNDRZ	326.13	19.15	13000	9800		BETWEEN 13000 AND 16000
TWENTYNINE PALMS	TNP.RNDRZ3	TNP VORTAC	TNP VORTAC						
			JOTNU	032.00	17.51	17000	9800		
			ZELMA	008.80	29.13	17000	9800		BETWEEN FL190 AND FL230
			MIYKE	326.47	33.29	13000	9800		
			RNDRZ	326.13	19.15	13000	9800		BETWEEN 13000 AND 16000

ARRIVAL ROUTE DESCRIPTION:

LANDING RWY 1L/R: FROM RNDRZ ON TRACK 048.17/12.01 TO CROSS RUMLY BETWEEN 10000 AND 13000, THEN ON TRACK 048.29/4.40 TO CROSS HIMIT AT OR ABOVE 8800, THEN ON TRACK 048.34/2.60 TO CROSS SLOTS AT 8000, THEN ON TRACK 030.29/5.03 TO CROSS ROAMN AT 8000 AND AT 210 KIAS, THEN ON TRACK 030.29. EXPECT RADAR VECTORS TO FINAL APPROACH COURSE.

LANDING RWY 8L/R: FROM RNDRZ ON TRACK 048.17/12.01 TO CROSS RUMLY BETWEEN 10000 AND 13000, THEN ON TRACK 048.29/4.40 TO CROSS HIMIT AT OR ABOVE 8800, THEN ON TRACK 048.34/2.60 TO CROSS SLOTS AT 8000, THEN ON TRACK 006.28/7.98 TO CROSS YAGGR AT 8000 AND AT 210 KIAS, THEN ON TRACK 005.00. EXPECT RADAR VECTORS TO FINAL APPROACH COURSE.

LANDING RWY 26L/R, 19L/R: FROM RNDRZ ON TRACK 036.75/12.28 TO GRMMA, THEN ON TRACK 018.69/12.35 TO CROSS BUETY AT OR ABOVE 13000, THEN ON TRACK 018.56/7.50 TO CROSS ENNVY AT OR ABOVE 11000, THEN ON TRACK 082.42/12.02 TO CROSS REDQN AT OR ABOVE 9000 AND AT 210 KIAS, THEN ON TRACK 082.57/4.57 TO CROSS BERBN AT 8000 AND AT 210 KIAS, THEN ON TRACK 079.32. EXPECT RADAR VECTORS TO FINAL APPROACH COURSE.

PBN REQUIREMENT NOTES:

RNAV 1 - DME/DME/IRU OR GPS

EQUIPMENT REQUIREMENT NOTES:

RADAR REQUIRED

PROCEDURAL DATA NOTES:

NOTE: JET AIRCRAFT ONLY

NOTE: NEEDLES TRANSITION, ATC ASSIGNED ONLY.

QUALITY  
14  
CHECKED

FEDERAL AVIATION ADMINISTRATION  
FLIGHT STANDARDS SERVICE  
STANDARD TERMINAL ARRIVAL (STAR)

Bearings, headings, courses, tracks and radials are magnetic. Elevations and altitudes are in feet, MSL. Altitudes are minimum altitudes unless otherwise indicated.  
Ceilings are in feet above airport elevation. Distances are in nautical miles. Visibilities are in statute miles or feet RVR unless otherwise indicated.

Arrival Name	Number	STAR Computer Code	Superseded Number	Dated	Effective Date
<b>RNDRZ (RNAV)</b>	<b>THREE</b>	<b>RNDRZ.RNDRZ3</b>	<b>TWO</b>	<b>05/19/2022</b>	<b>31OCT2024</b>

**FIXES AND/OR HOLDING PATTERNS:**

CHART HOLDING AT RNDRZ: HOLD SW, RT, 037.36 INBOUND, 10 NM LEGS.

CHART HOLDING AT WATEV: HOLD SW, RT, 037.28 INBOUND, 10 NM LEGS.

**COMMUNICATIONS:**

CHART: LAS VEGAS APP CON.

CHART: LAS VEGAS TWR.

**AIRPORTS SERVED:**

<u>AIRPORT ID</u>	<u>CITY</u>	<u>STATE</u>
LAS	LAS VEGAS	NV

**LOST COMMUNICATIONS PREFERENCES:**

LANDING RUNWAY 8R: AT YAGGR PROCEED ON THE RNAV (RNP) RWY 8R APPROACH, IF UNABLE, PROCEED VISUALLY TO INTERCEPT THE FINAL APPROACH COURSE; IF UNABLE, MAINTAIN 8000 PROCEED DIRECT LAS VORTAC THEN MAINTAIN 7000 PROCEED TO BLD VORTAC AND THEN ON THE ILS OR LOC RWY 26L APPROACH.

**REMARKS:****ADDITIONAL FLIGHT DATA:**

DME/DME ASSESSMENT: SAT (RNP 2.0)

MAG VAR: KLAS 11E/2020

CHART AT ROAMN TERMINUS: LDG RWY 1L/R

CHART AT BERBN TERMINUS: LDG RWY 26L/R, 19L/R

CHART AT YAGGR TERMINUS: LDG RWY 8L/R

**FLIGHT INSPECTED BY:****ORGANIZATION:**    **DATE:**

Flight Inspected Signature:

*Digitally signed by*  
**ROBERT G HAMILTON**

Aug 29, 2024

**DEVELOPED BY:**SEAN ROZENBERG, SUPPORT MANAGER FOR  
AIRSPACE & PROCEDURESLOS ANGELES  
ARTCC    03/12/2024

Developed By Signature:

*Digitally signed by*  
**ROBERT G HAMILTON**

Aug 29, 2024

**APPROVED BY:**

JOHN BORDY

AJV-A33

Approved By Signature:

*Digitally signed by*  
**ROBERT G HAMILTON**

Aug 29, 2024

**CHANGES:**

1. TOETS WP AND ASSOCIATED HOLDING PATTERN DELETED FROM PROCEDURE.
2. HOLDING PATTERN CREATED AT RNDRZ: HOLD SW, RT, 037.36 INBOUND, 10 NM LEGS.
3. RESTRICTION AT MISEN CHANGED FROM AT FL240 TO AT/ABOVE FL240.

QUALITY  
14  
CHECKED

FEDERAL AVIATION ADMINISTRATION  
FLIGHT STANDARDS SERVICE  
STANDARD TERMINAL ARRIVAL (STAR)

Bearings, headings, courses, tracks and radials are magnetic. Elevations and altitudes are in feet, MSL. Altitudes are minimum altitudes unless otherwise indicated.  
Ceilings are in feet above airport elevation. Distances are in nautical miles. Visibilities are in statute miles or feet RVR unless otherwise indicated.

Arrival Name	Number	STAR Computer Code	Superseded Number	Dated	Effective Date
<b>RNDRZ (RNAV)</b>	<b>THREE</b>	<b>RNDRZ.RNDRZ3</b>	<b>TWO</b>	<b>05/19/2022</b>	<b>31OCT2024</b>
4. RESTRICTION AT RNDRZ CHANGED FROM BETWEEN 13000 AND FL190 TO BETWEEN 13000 AND 16000.					
5. BAUMM NAME CHANGED TO HAYLO.					
6. DELETED TWAFL FROM RWY 26L/R TRANSITION BETWEEN ENVVY AND REDQN.					
7. REDQN MOVED 629 FEET NORTH.					
8. ESTABLISHED NEW WP HIMIT BETWEEN RUMLY AND HAYLO ON RWY 1L/R AND RWY 8L/R TRANSITIONS WITH RESTRICTION OF AT/ABOVE 8800.					
9. MEA MISEN TO TEDDE CHANGED FROM FL190 TO 17000.					
10. MEA TEDDE TO WATEV CHANGED FROM FL190 TO 13000.					
11. MEA TNP TO JOTNU CHANGED FROM FL190 TO 17000.					
12. MEA JOTNU TO ZELMA FROM FL190 TO 17000.					
13. MEA EED TO ZELMA CHANGED FROM FL190 TO 17000.					
14. MOCA MISEN TO TEDDE CHANGED FROM 7900 TO 7100.					
15. MOCA TEDDE TO WATEV CHANGED FROM 7900 TO 7100.					
16. MOCA WATEV TO RNDRZ CHANGED FROM 7900 TO 7100.					
17. MOCA TNP TO JOTNU CHANGED FROM 10500 TO 9800.					
18. MOCA JOTNU TO ZELMA CHANGED FROM 10500 TO 9800.					
19. MOCA ZELMA TO MIYKE CHANGED FROM 10500 TO 9800.					
20. MOCA MIYKE TO RNDRZ CHANGED FROM 10500 TO 9800.					
21. REMOVED BANK ANGLE AND OBST REMARKS.					
22. REMOVED LETTER K FROM IDENT AND CITY FROM AIRPORTS SERVED.					
23. REVISED LOST COMMUNICATIONS.					
24. REVISED ARRIVAL DESCRIPTIONS WITH NEW FM LEG CHANGES.					

**REASONS:**

1. NO LONGER NEEDED.
2. ATC REQUEST TO REPLACE HOLDING AT TOETS.
3. ATC REQUEST TO ALLOW CROSSING AT OR ABOVE FL240.
4. ATC REQUEST TO FACILITATE ARRIVAL SEQUENCING.
5. ATC REQUEST--INAPPROPRIATE WP NAME.
6. ATC REQUEST--NO LONGER NEEDED.
7. STRAIGHTENS THE PATH FROM ENVVY TO BERBN.
8. STEP DOWN FIX NEEDED TO PROTECT FOR MOCA DESCENDING TO 8000 AT HAYLO.
- 9-13. UPDATED DME ANALYSIS AND ADDITIONAL ESVs ALLOW FOR LOWER MEAs.
- 14-21. UPDATED OBSTACLE/TERRAIN ANALYSIS RESULTS.
- 22-23. CURRENT DOCUMENTATION STANDARDS.
24. ATC REQUEST.



FEDERAL AVIATION ADMINISTRATION  
FLIGHT STANDARDS SERVICE  
STANDARD TERMINAL ARRIVAL (STAR)

Bearings, headings, courses, tracks and radials are magnetic. Elevations and altitudes are in feet, MSL. Altitudes are minimum altitudes unless otherwise indicated.  
Ceilings are in feet above airport elevation. Distances are in nautical miles. Visibilities are in statute miles or feet RVR unless otherwise indicated.

Arrival Name	Number	STAR Computer Code	Superseded Number	Dated	Effective Date
<b>RNDRZ (RNAV)</b>	<b>THREE</b>	<b>RNDRZ.RNDRZ3</b>	<b>TWO</b>	<b>05/19/2022</b>	<b>31OCT2024</b>

THIS IS AN UPDATED COPY OF THE FORM DEVELOPED ON 03/12/2024:

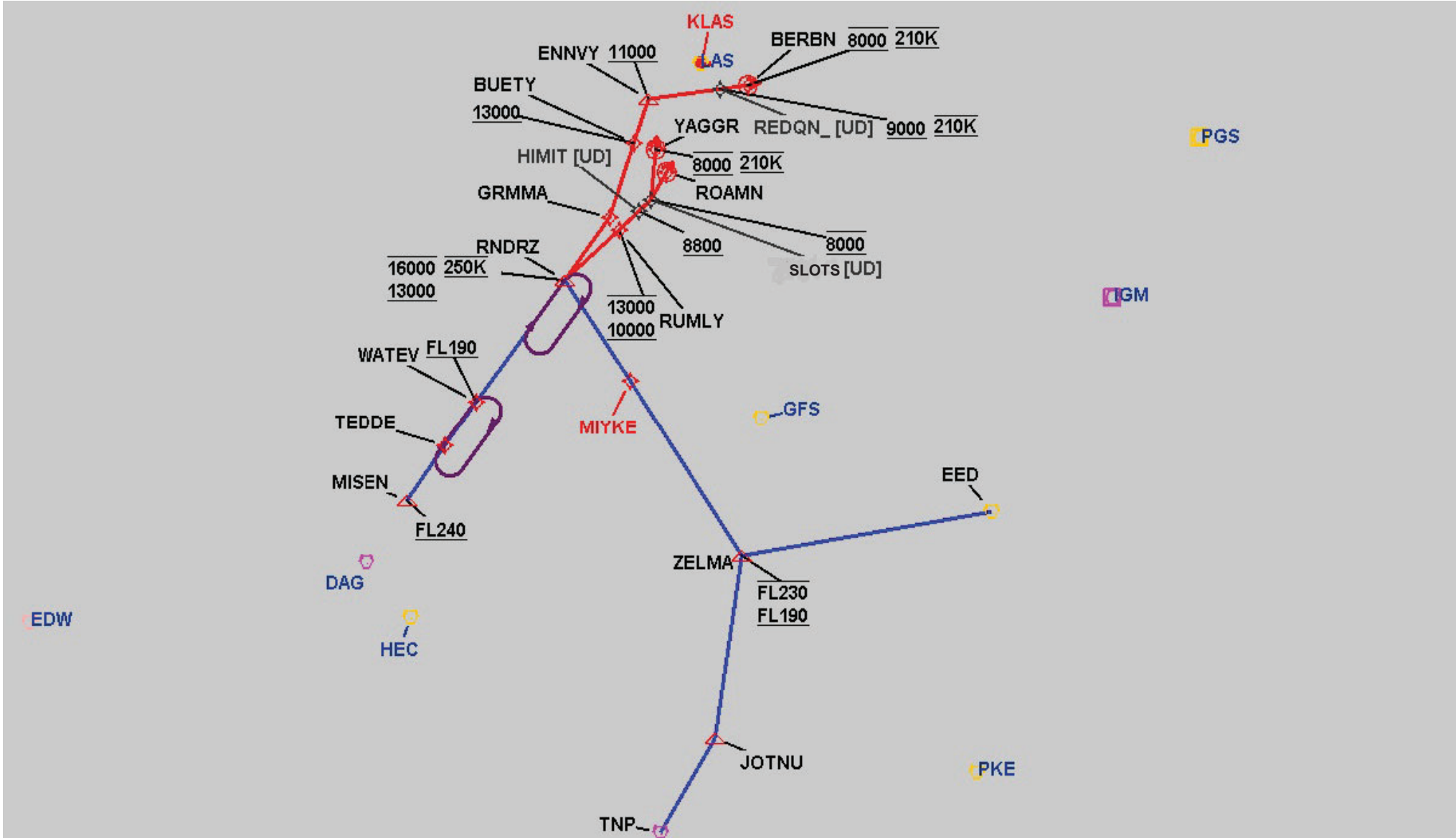
1. DUE TO SIMILAR SOUNDING FIX HAILO IN ZLA AIRSPACE HAYLO IS BEING CHANGED TO SLOTS.



FEDERAL AVIATION ADMINISTRATION  
FLIGHT STANDARDS SERVICE  
STANDARD TERMINAL ARRIVAL (STAR)

Bearings, headings, courses, tracks and radials are magnetic. Elevations and altitudes are in feet, MSL. Altitudes are minimum altitudes unless otherwise indicated.  
Ceilings are in feet above airport elevation. Distances are in nautical miles. Visibilities are in statute miles or feet RVR unless otherwise indicated.

Arrival Name	Number	STAR Computer Code	Superseded Number	Dated	Effective Date
RNDRZ (RNAV)	THREE	RNDRZ.RNDRZ3	TWO	05/19/2022	31OCT2024
Graphic Depiction 1					



FEDERAL AVIATION ADMINISTRATION  
FLIGHT STANDARDS SERVICE  
STAR (DATA RECORD)

Arrival Name RNDRZ (RNAV)	Number THREE	STAR Computer Code RNDRZ.RNDRZ3		Superseded Number TWO		Dated 05/19/2022	Effective Date 31OCT2024		
FIX/NAVAID	LAT/LONG	C	FO/FB	LEG TYPE	TC	DIST (NM)	ALTITUDE	SPEED	REMARKS
En Route Transition									
MISEN	350608.46N / 1162413.86W	Y		IF			AT/ABOVE FL240		MISEN.RNDRZ3
TEDDE	351333.39N / 1161438.54W	Y	FB	TF	046.67	10.80			
WATEV	351914.28N / 1160651.71W	Y	FB	TF	048.28	08.53	AT/ABOVE FL190		
RNDRZ	353526.72N / 1154430.06W	Y	FB	TF	048.36	24.40	13000B16000	AT 250K	
En Route Transition									
EED VORTAC	344557.62N / 1142826.78W	Y		IF					EED.RNDRZ3
ZELMA	344659.99N / 1151947.51W	Y	FB	TF	271.65	42.31	FL190BFL230		
MIYKE	351746.87N / 1153522.64W	Y	FB	TF	337.47	33.29			
RNDRZ	353526.72N / 1154430.06W	Y	FB	TF	337.13	19.15	13000B16000	AT 250K	
En Route Transition									
TNP VORTAC	340644.04N / 1154611.66W	Y		IF					TNP.RNDRZ3
JOTNU	341933.11N / 1153146.29W	Y	FB	TF	043.00	17.51			
ZELMA	344659.99N / 1151947.51W	Y	FB	TF	019.80	29.13	FL190BFL230		
MIYKE	351746.87N / 1153522.64W	Y	FB	TF	337.47	33.29			
RNDRZ	353526.72N / 1154430.06W	Y	FB	TF	337.13	19.15	13000B16000	AT 250K	
Runway Transition									
RNDRZ	353526.72N / 1154430.06W	Y		IF			13000B16000	AT 250K	
RUMLY	354135.88N / 1153150.45W	Y	FB	TF	059.17	12.01	10000B13000		
HIMIT	354350.81N / 1152711.65W	Y	FB	TF	059.29	04.40	AT/ABOVE 8800		
SLOTS	354510.45N / 1152426.79W	Y	FB	TF	059.34	02.60	AT 8000		
ROAMN	354857.47N / 1152021.90W	Y	FO	TF	041.29	05.03	AT 8000	AT 210K	
KLAS:RWY 1L,RWY 1R				FM	041.29				
Runway Transition									
RNDRZ	353526.72N / 1154430.06W	Y		IF			13000B16000	AT 250K	

FEDERAL AVIATION ADMINISTRATION  
FLIGHT STANDARDS SERVICE  
STAR (DATA RECORD)

Arrival Name RNDRZ (RNAV)		Number THREE		STAR Computer Code RNDRZ.RNDRZ3			Superseded Number TWO		Dated 05/19/2022	Effective Date 31OCT2024
<u>FIX/NAVAID</u>	<u>LAT/LONG</u>	<u>C</u>	<u>FO/FB</u>	<u>LEG TYPE</u>	<u>TC</u>	<u>DIST (NM)</u>	<u>ALTITUDE</u>	<u>SPEED</u>	<u>REMARKS</u>	
RUMLY	354135.88N / 1153150.45W	Y	FB	TF	059.17	12.01	10000B13000			
HIMIT	354350.81N / 1152711.65W	Y	FB	TF	059.29	04.40	AT/ABOVE 8800			
SLOTS	354510.45N / 1152426.79W	Y	FB	TF	059.34	02.60	AT 8000			
YAGGR	355248.54N / 1152131.70W	Y	FO	TF	017.28	07.98	AT 8000	AT 210K		
KLAS:RWY 8L,RWY 8R				FM	016.00					
Runway Transition										
RNDRZ	353526.72N / 1154430.06W	Y		IF			13000B16000	AT 250K		
GRMMA	354342.13N / 1153320.39W	Y	FB	TF	047.75	12.28				
BUETY	355426.59N / 1152548.58W	Y	FB	TF	029.69	12.35	AT/ABOVE 13000			
ENNVY	360058.51N / 1152114.95W	Y	FB	TF	029.56	07.50	AT/ABOVE 11000			
REDQN	360014.47N / 1150627.81W	Y	FB	TF	093.42	12.02	AT/ABOVE 9000	AT 210K		
BERBN	355957.25N / 1150050.72W	Y	FO	TF	093.57	04.57	AT 8000	AT 210K		
KLAS:RWY 19L,RWY 19R,RWY 26L,RWY 26R				FM	090.32					