

FEDERAL AVIATION ADMINISTRATION
FLIGHT STANDARDS SERVICE
STANDARD TERMINAL ARRIVAL (STAR)

Bearings, headings, courses, tracks and radials are magnetic. Elevations and altitudes are in feet, MSL. Altitudes are minimum altitudes unless otherwise indicated.
Ceilings are in feet above airport elevation. Distances are in nautical miles. Visibilities are in statute miles or feet RVR unless otherwise indicated.

Arrival Name	Number	STAR Computer Code	Superseded Number	Dated	Effective Date
FILPZ (RNAV)	FOUR	JJENY.FILPZ4	THREE	08/17/2017	16 MAY 2024

TRANSITION ROUTES:

Transition Name	Transition Computer Codes	From FIX/NAVAID	To FIX/NAVAID	Course	Distance	MEA	MOCA	MAA	Crossing Altitudes / Fixes
COMDY	COMDY.FILPZ4	COMDY	COMDY						
			BLAYQ	112.22	15.42	13000	8300		
			PHAYE	112.20	23.42	13000	8300		AT/ABOVE FL240
			JJENY	112.56	21.15	11000	8300		BETWEEN FL190 AND FL270
SKYWA	SKYWA.FILPZ4	SKYWA	SKYWA						
			NIZAM	137.97	14.96	13000	8300		
			COMDY	137.97	42.72	13000	8300		
			BLAYQ	112.22	15.42	13000	8300		
			PHAYE	112.20	23.42	13000	8300		AT/ABOVE FL240
			JJENY	112.56	21.15	11000	8300		BETWEEN FL190 AND FL270
TAZZA	TAZZA.FILPZ4	TAZZA	TAZZA						
			COMDY	091.92	57.61	13000	8300		
			BLAYQ	112.22	15.42	13000	8300		
			PHAYE	112.20	23.42	13000	8300		AT/ABOVE FL240
			JJENY	112.56	21.15	11000	8300		BETWEEN FL190 AND FL270

ARRIVAL ROUTE DESCRIPTION:

FROM JJENY ON TRACK 112.81/11.27 TO CROSS FILPZ AT OR ABOVE 16000 AND AT 270 KIAS.

LANDING RWY 18L/C/R: FROM FILPZ ON TRACK 109.48/15.71 TO CROSS GLAXI BETWEEN 12000 AND 14000 AND AT 250 KIAS, THEN ON TRACK 109.54/7.73 TO CROSS JOBOT AT 11000 AND AT 250 KIAS, THEN ON TRACK 090.13/6.16 TO CROSS ERHRT AT OR BELOW 10000, THEN ON TRACK 090.19/13.18 TO CROSS FISHN AT 7000 AND AT 210 KIAS, THEN ON TRACK 090.19. EXPECT RADAR VECTORS TO FINAL APPROACH COURSE.

LANDING RWY 36L/C/R: FROM FILPZ ON TRACK 120.79/20.31 TO CROSS ADOWN BETWEEN 12000 AND FL190 AND AT 250 KIAS, THEN ON TRACK 115.99/10.11 TO CROSS INWAL BETWEEN 11000 AND 15000 AND AT 250 KIAS, THEN ON TRACK 116.07/13.54 TO CROSS JELNO BETWEEN 10000 AND 11000, THEN ON TRACK 116.18/8.00 TO CROSS CEDOX AT 10000 AND AT 210 KIAS, THEN ON TRACK 182.83/12.00 TO VALL, THEN ON TRACK 182.83. EXPECT RADAR VECTORS TO FINAL APPROACH COURSE.

PBN REQUIREMENT NOTES:

RNAV 1 - DME/DME/IRU OR GPS

EQUIPMENT REQUIREMENT NOTES:

RADAR REQUIRED

PROCEDURAL DATA NOTES:

NOTE: JET AIRCRAFT ONLY

NOTE: LANDING SOUTH USE RWY 18R TRANSITION, LANDING NORTH USE RWY 36L TRANSITION. EXPECT RUNWAY ASSIGNMENT FROM CLT APPROACH.

NOTE: JET AIRCRAFT DESCEND VIA MACH NUMBER UNTIL 270 KIAS, IF UNABLE, ADVISE ATC.



FEDERAL AVIATION ADMINISTRATION
FLIGHT STANDARDS SERVICE
STANDARD TERMINAL ARRIVAL (STAR)

Bearings, headings, courses, tracks and radials are magnetic. Elevations and altitudes are in feet, MSL. Altitudes are minimum altitudes unless otherwise indicated.
Ceilings are in feet above airport elevation. Distances are in nautical miles. Visibilities are in statute miles or feet RVR unless otherwise indicated.

Arrival Name	Number	STAR Computer Code	Superseded Number	Dated	Effective Date
FILPZ (RNAV)	FOUR	JJENY.FILPZ4	THREE	08/17/2017	16 MAY 2024

FIXES AND/OR HOLDING PATTERNS:

CHART HOLDING AT FILPZ: HOLD NW, LT, 112.81 INBOUND, 10 NM LEGS.
CHART HOLDING AT LIINN: HOLD NW, RT, 121.00 INBOUND, 10 NM LEGS.
CHART HOLDING AT PHAYE: HOLD W, LT, 112.20 INBOUND, 10 NM LEGS.

COMMUNICATIONS:

CHART: CHARLOTTE APP CON

AIRPORTS SERVED:

<u>AIRPORT ID</u>	<u>CITY</u>	<u>STATE</u>
KCLT	CHARLOTTE	NC

LOST COMMUNICATIONS PREFERENCES:**REMARKS:**

THE ENVIRONMENTAL REVIEW UNDER ORDER 1050.1 (LATEST EDITION) AND THE NOISE SCREENING HAVE BEEN ACCOMPLISHED.

ABBREVIATED AMENDMENT

ADDITIONAL FLIGHT DATA:

DME/DME ASSESSMENT: SAT (RNP 2.0)
MAG VAR: KCLT 07W/2000
CHART AT VALLL TERMINUS: KCLT LDG RWY 36L/C/R
CHART AT FISHN TERMINUS: KCLT LDG RWY 18L/C/R
CHART: N92
CHART: USE CAUTION: PARACHUTE JUMPING, 5NM NORTHEAST FISHN, 3NM RADIUS N92 AT OR BELOW 11,500 MSL.

FLIGHT INSPECTED BY:

JEFFREY ECKMAN

ORGANIZATION:

FPO

DATE:

02/14/2024

Flight Inspected Signature:

Digitally signed by
CASIMIR L TABAKA

Feb 15, 2024

DEVELOPED BY:

JOSEPH L. ZEDER

AJV-A432

11/7/2023

Developed By Signature:

Digitally signed by
CASIMIR L TABAKA

Jan 16, 2024

APPROVED BY:

CASIMIR TABAKA (MANAGER)

AJV-A432

Approved By Signature:

Digitally signed by
CASIMIR L TABAKA

Jan 16, 2024

CHANGES:

1. REMOVED ALL REFERENCES TO RWYS 5/23.
2. REMOVED RESTRICTION AT VALLL WP: AT 6000 AT 210K.

QUALITY
14
CHECKED

FEDERAL AVIATION ADMINISTRATION
FLIGHT STANDARDS SERVICE
STANDARD TERMINAL ARRIVAL (STAR)

Bearings, headings, courses, tracks and radials are magnetic. Elevations and altitudes are in feet, MSL. Altitudes are minimum altitudes unless otherwise indicated.
Ceilings are in feet above airport elevation. Distances are in nautical miles. Visibilities are in statute miles or feet RVR unless otherwise indicated.

Arrival Name	Number	STAR Computer Code	Superseded Number	Dated	Effective Date
FILPZ (RNAV)	FOUR	JJENY.FILPZ4	THREE	08/17/2017	16 MAY 2024
3. AMENDED ALTITUDE RESTRICTION AT CEDOX FROM: AT 9000 TO: AT 10000.					
4. AMENDED ALTITUDE RESTRICTION AT GLAXI FROM: AOA 12000 TO: BETWEEN 12000 and 14000.					
5. AMENDED ALTITUDE RESTRICTION AT JOBOT FROM: BETWEEN 11000 and 12000 TO: AT 11000.					
6. AMENDED NOTE: "CHART NEAR N92: CAUTION: PARACHUTE JUMPING 5NM NE FISHN, 3.0 NM RADIUS N92 (LANEY FIELD), AOB 11,500 MSL" TO "CAUTION: PARACHUTE JUMPING 5NM NE FISHN, 3.0 NM RADIUS N92 (LANEY FIELD), AOB 11,500 MSL".					
7. REMOVED FISHN CHART NOTE: Expect RADAR vectors to final approach course after FISHN.					
8. REMOVED VALLL CHART NOTE: Expect RADAR vectors to final approach course after VALLL.					
9. DELETE NOTE: EXPECT "DESCEND VIA" CLEARANCE AND LANDING DIRECTION ASSIGNMENT (NORTH or SOUTH) BY ARTCC. FOR VERTICAL NAVIGATION PLANNING, LANDING SOUTH, SELECT RWY18R, LANDING NORTH, SELECT RWY36L.					
10. DELETE NOTE:CLT APPROACH WILL ASSIGN LANDING RUNWAY.					
11. DELETE NOTE: DESCEND VIA MACH NUMBER UNTIL INTERCEPTING 270 KIAS. MAINTAIN 270 KIAS UNTIL SLOWED BY THE STAR OR ASSIGNED BY ATC					
12. ADD NOTE:LANDING SOUTH USE RUNWAY 18R TRANSITION, LANDING NORTH USE RUNWAY 36L TRANSITION.EXPECT RUNWAY ASSIGNMENT FROM CLT APCH.					
13. ADD NOTE: JET AIRCRAFT DESCEND VIA MACH NUMBER UNTIL 270 KIAS, IF UNABLE, ADVISE ATC.					
14. CHANGE NOTE "TURBOJET AIRCRAFT ONLY" TO "JET AIRCRAFT ONLY".					
15. RAISED ALL MOCAS PRIOR TO JJENY TO 8300.					
16. REMOVED RECOMMENDED NAVAID.					

REASONS:

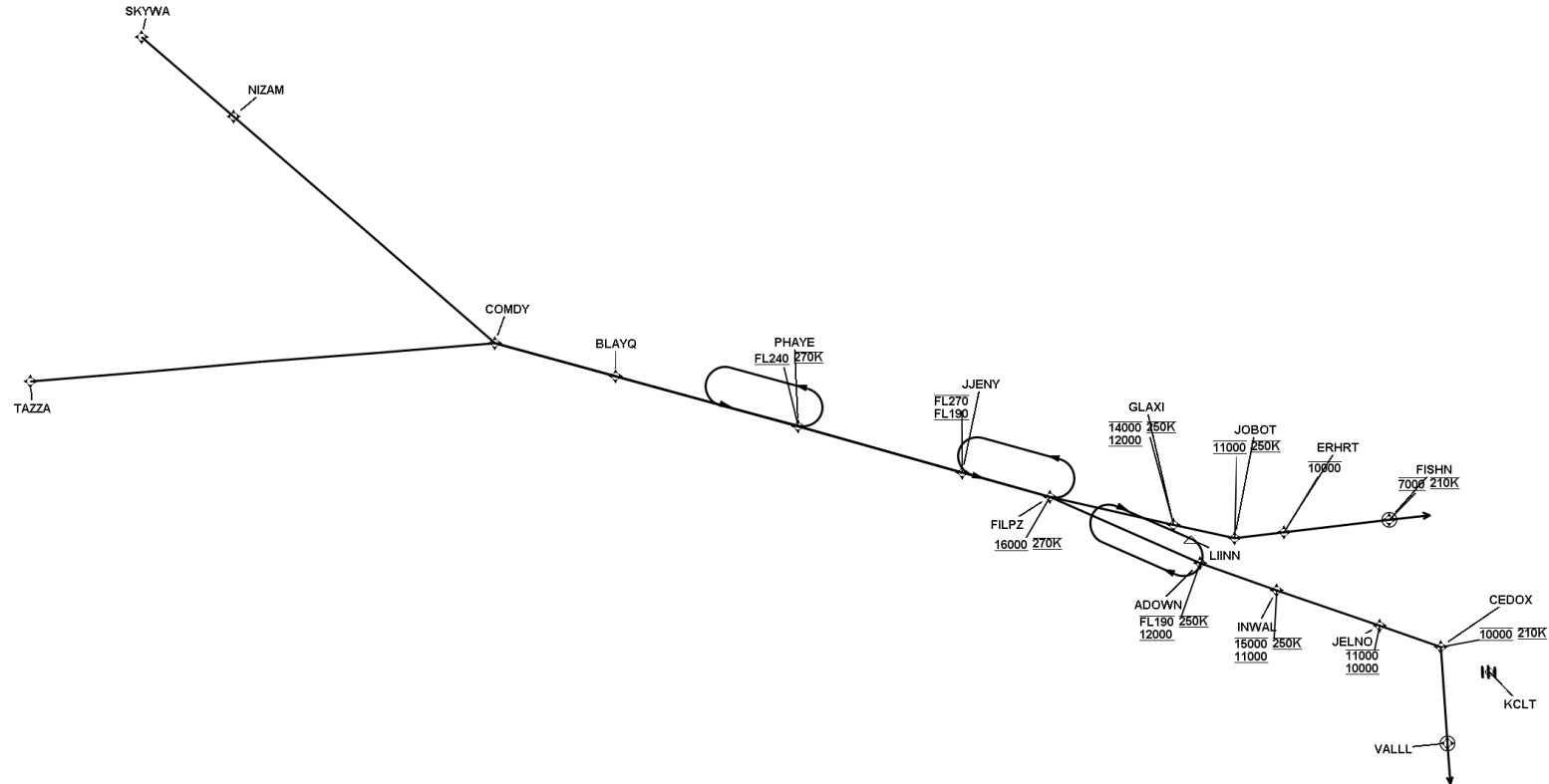
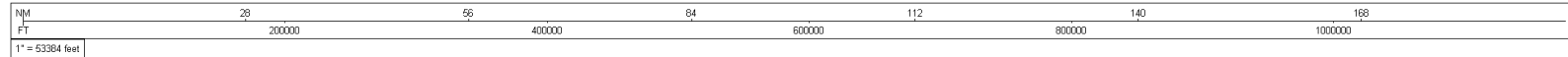
- 1-6. ATC REQUEST.
- 7-8. DUPLICATED INFORMATION. CONTAINED IN ARRIVAL ROUTE DESCRIPTION, REDUCES CHART CLUTTER.
- 9-13. FAAO 8260.19I 4-5-2.
14. UPDATED TERMINOLOGY.
15. IAW 8260.3E 2-2-7 d, (3). A MOCA MUST NOT BE HIGHER THAN THE PREVIOUS MOCA.
16. NO LONGER REQUIRED.

QUALITY
14
CHECKED

FEDERAL AVIATION ADMINISTRATION
FLIGHT STANDARDS SERVICE
STANDARD TERMINAL ARRIVAL (STAR)

Bearings, headings, courses, tracks and radials are magnetic. Elevations and altitudes are in feet, MSL. Altitudes are minimum altitudes unless otherwise indicated.
Ceilings are in feet above airport elevation. Distances are in nautical miles. Visibilities are in statute miles or feet RVR unless otherwise indicated.

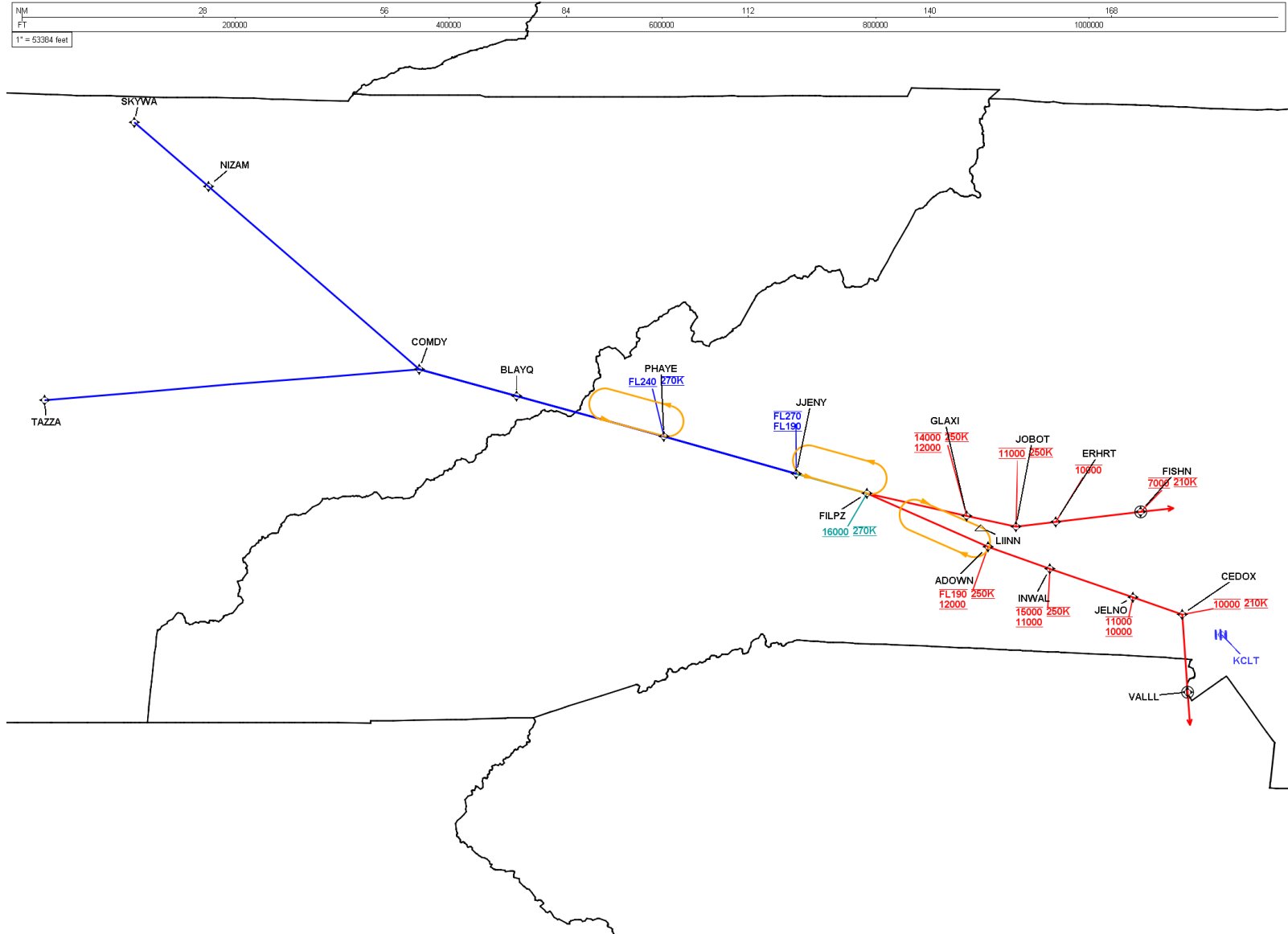
Arrival Name	Number	STAR Computer Code	Superseded Number	Dated	Effective Date
FILPZ (RNAV)	FOUR	JJENY.FILPZ4	THREE	08/17/2017	16 MAY 2024
Graphic Depiction 1					



FEDERAL AVIATION ADMINISTRATION
FLIGHT STANDARDS SERVICE
STANDARD TERMINAL ARRIVAL (STAR)

Bearings, headings, courses, tracks and radials are magnetic. Elevations and altitudes are in feet, MSL. Altitudes are minimum altitudes unless otherwise indicated.
Ceilings are in feet above airport elevation. Distances are in nautical miles. Visibilities are in statute miles or feet RVR unless otherwise indicated.

Arrival Name	Number	STAR Computer Code	Superseded Number	Dated	Effective Date
FILPZ (RNAV)	FOUR	JJENY.FILPZ4	THREE	08/17/2017	16 MAY 2024
Graphic Depiction 2					



FEDERAL AVIATION ADMINISTRATION
FLIGHT STANDARDS SERVICE
STAR (DATA RECORD)

Arrival Name FILPZ (RNAV)		Number FOUR		STAR Computer Code JJENY.FILPZ4		Superseded Number THREE		Dated 08/17/2017	Effective Date 16 MAY 2024
FIX/NAVAID	LAT/LONG	C	FO/FB	LEG TYPE	TC	DIST (NM)	ALTITUDE	SPEED	REMARKS
En Route Transition									
COMDY	355337.26N / 0832801.28W	Y		IF					COMDY.FILPZ4
BLAYQ	354932.60N / 0830943.09W	Y	FB	TF	105.22	15.42			
PHAYE	354320.41N / 0824157.66W	Y	FB	TF	105.20	23.42	AT/ABOVE FL240	AT 270K	
JJENY	353736.86N / 0821657.77W	Y	FB	TF	105.56	21.15	FL190BFL270		
En Route Transition									
SKYWA	363137.31N / 0842142.40W	Y		IF					SKYWA.FILPZ4
NIZAM	362146.96N / 0840743.06W	Y	FB	TF	130.97	14.96			
COMDY	355337.26N / 0832801.28W	Y	FB	TF	130.97	42.72			
BLAYQ	354932.60N / 0830943.09W	Y	FB	TF	105.22	15.42			
PHAYE	354320.41N / 0824157.66W	Y	FB	TF	105.20	23.42	AT/ABOVE FL240	AT 270K	
JJENY	353736.86N / 0821657.77W	Y	FB	TF	105.56	21.15	FL190BFL270		
En Route Transition									
TAZZA	354851.72N / 0843838.87W	Y		IF					TAZZA.FILPZ4
COMDY	355337.26N / 0832801.28W	Y	FB	TF	084.92	57.61			
BLAYQ	354932.60N / 0830943.09W	Y	FB	TF	105.22	15.42			
PHAYE	354320.41N / 0824157.66W	Y	FB	TF	105.20	23.42	AT/ABOVE FL240	AT 270K	
JJENY	353736.86N / 0821657.77W	Y	FB	TF	105.56	21.15	FL190BFL270		
Common Route									
JJENY	353736.86N / 0821657.77W	Y		IF			FL190BFL270		JJENY.FILPZ4
FILPZ	353431.56N / 0820340.14W	Y	FB	TF	105.81	11.27	AT/ABOVE 16000	AT 270K	
Runway Transition									
FILPZ	353431.56N / 0820340.14W	Y		IF			AT/ABOVE 16000	AT 270K	
GLAXI	353106.09N / 0814452.96W	Y	FB	TF	102.48	15.71	12000B14000	AT 250K	
JOBOT	352924.88N / 0813538.45W	Y	FB	TF	102.54	07.73	AT 11000	AT 250K	
ERHRT	353008.91N / 0812808.86W	Y	FB	TF	083.13	06.16	AT/BELOW 10000		

FEDERAL AVIATION ADMINISTRATION
FLIGHT STANDARDS SERVICE
STAR (DATA RECORD)

Arrival Name FILPZ (RNAV)		Number FOUR		STAR Computer Code JJENY.FILPZ4			Superseded Number THREE		Dated 08/17/2017	Effective Date 16 MAY 2024
FIX/NAVAID	LAT/LONG	C	FO/FB	LEG TYPE	TC	DIST (NM)	ALTITUDE	SPEED	REMARKS	
FISHN	353141.80N / 0811207.07W	Y	FO	TF	083.19	13.18	AT 7000	AT 210K		
KCLT:RWY 18R, RWY 18C, RWY 18L				FM	083.19					
Runway Transition										
FILPZ	353431.56N / 0820340.14W	Y		IF			AT/ABOVE 16000	AT 270K		
ADOWN	352617.14N / 0814055.87W	Y	FB	TF	113.79	20.31	12000BFL190	AT 250K		
INWAL	352258.84N / 0812914.35W	Y	FB	TF	108.99	10.11	11000B15000	AT 250K		
JELNO	351831.95N / 0811335.92W	Y	FB	TF	109.07	13.54	10000B11000			
CEDOX	351553.64N / 0810422.20W	Y	FB	TF	109.18	08.00	AT 10000	AT 210K		
VALLL	350354.40N / 0810318.39W	Y	FO	TF	175.83	12.00				
KCLT:RWY 36L, RWY 36C, RWY 36R				FM	175.83					