

FEDERAL AVIATION ADMINISTRATION
FLIGHT STANDARDS SERVICE
STANDARD TERMINAL ARRIVAL (STAR)

Bearings, headings, courses, tracks and radials are magnetic. Elevations and altitudes are in feet, MSL. Altitudes are minimum altitudes unless otherwise indicated.
Ceilings are in feet above airport elevation. Distances are in nautical miles. Visibilities are in statute miles or feet RVR unless otherwise indicated.

Arrival Name NIIXX (RNAV)	Number FOUR	STAR Computer Code NIIXX.NIIXX4	Superseded Number THREE	Dated 10/07/2021	Effective Date 12 JUN 25
------------------------------	----------------	------------------------------------	----------------------------	---------------------	-----------------------------

TRANSITION ROUTES:

Transition Name	Transition Computer Codes	From FIX/NAVAID	To FIX/NAVAID	Course	Distance	MEA	MOCA	MAA	Crossing Altitudes / Fixes
HALEN	HALEN.NIIXX4	HALEN	HALEN						
			KOORN	305.05	32.59	FL190	9100		
			IDOLL	304.74	54.27	17000	9100		
			YOUTU	304.15	18.02	15000	9100		
			NIIXX	303.97	10.00	15000	9100		BETWEEN FL190 AND FL220
NARNO	NARNO.NIIXX4	NARNO	NARNO						
			IDOLL	328.52	28.14	17000	9100		
			YOUTU	304.15	18.02	15000	9100		
			NIIXX	303.97	10.00	15000	9100		BETWEEN FL190 AND FL220
ZIGEE	ZIGEE.NIIXX4	ZIGEE	ZIGEE						
			NARNO	328.96	56.25	FL190	9100		
			IDOLL	328.52	28.14	17000	9100		
			YOUTU	304.15	18.02	15000	9100		
			NIIXX	303.97	10.00	15000	9100		BETWEEN FL190 AND FL220

ARRIVAL ROUTE DESCRIPTION:

FROM NIIXX ON TRACK 303.54/15.96 TO CROSS HAGGR BETWEEN 15000 AND FL190 AND AT 250 KIAS.

LANDING RWY 7, 8: FROM HAGGR ON TRACK 321.88/11.94 TO CROSS JPAGE BETWEEN 15000 AND 17000, THEN ON TRACK 312.65/17.07 TO CROSS ROOTZ BETWEEN 13000 AND 15000 AND AT 250 KIAS, THEN ON TRACK 295.28/5.36 TO RPIDS, THEN ON TRACK 263.06/4.74 TO CROSS BBOOK AT 11000 AND AT 210 KIAS, THEN ON TRACK 263.06. EXPECT RADAR VECTORS TO FINAL APPROACH COURSE.

LANDING RWY 16L, 17L/R: FROM HAGGR ON TRACK 321.88/11.94 TO CROSS JPAGE BETWEEN 15000 AND 17000, THEN ON TRACK 325.61/17.32 TO CROSS JAAAM BETWEEN 13000 AND 15000 AND AT 250 KIAS, THEN ON TRACK 337.05/7.20 TO HUDPI, THEN ON TRACK 352.53/5.00 TO CROSS QWIKI AT 11000 AND AT 210 KIAS, THEN ON TRACK 352.53. EXPECT RADAR VECTORS TO FINAL APPROACH COURSE.

LANDING RWY 16R: FROM HAGGR ON TRACK 321.88/11.94 TO CROSS JPAGE BETWEEN 15000 AND 17000, THEN ON TRACK 312.65/17.07 TO CROSS ROOTZ BETWEEN 13000 AND 15000 AND AT 250 KIAS, THEN ON TRACK 295.28/5.36 TO RPIDS, THEN ON TRACK 294.83/10.63 TO RDDVL, THEN ON TRACK 352.51/5.00 TO CROSS CLFFF AT 11000 AND AT 210 KIAS, THEN ON TRACK 352.51. EXPECT RADAR VECTORS TO FINAL APPROACH COURSE.

LANDING RWY 25, 26: FROM HAGGR ON TRACK 316.88/4.50 TO CROSS GEILS AT 14000, THEN ON TRACK 316.88. EXPECT RADAR VECTORS TO FINAL APPROACH COURSE.

LANDING RWY 34L/R, 35L/R: FROM HAGGR ON TRACK 273.67/12.02 TO CROSS BSTON BETWEEN 13000 AND 14000 AND AT 230 KIAS, THEN ON TRACK 273.45/7.14 TO CROSS BOSSS AT 12000 AND AT 210 KIAS. EXPECT ILS OR LOC RWY 34L, RWY 34R, RWY 35L, RWY 35R APPROACH.

PBN REQUIREMENT NOTES:

RNAV 1 - DME/DME/IRU OR GPS

EQUIPMENT REQUIREMENT NOTES:

RADAR REQUIRED

FEDERAL AVIATION ADMINISTRATION
FLIGHT STANDARDS SERVICE
STANDARD TERMINAL ARRIVAL (STAR)

Bearings, headings, courses, tracks and radials are magnetic. Elevations and altitudes are in feet, MSL. Altitudes are minimum altitudes unless otherwise indicated.
Ceilings are in feet above airport elevation. Distances are in nautical miles. Visibilities are in statute miles or feet RVR unless otherwise indicated.

Arrival Name	Number	STAR Computer Code	Superseded Number	Dated	Effective Date
NIIXX (RNAV)	FOUR	NIIXX.NIIXX4	THREE	10/07/2021	12 JUN 25

PROCEDURAL DATA NOTES:

NOTE: JET AIRCRAFT ONLY
NOTE: DENVER CENTER WILL ISSUE "DESCEND VIA" CLEARANCE AND LANDING DIRECTION.
NOTE: NARNO TRANSITION, ATC ASSIGNED ONLY.
NOTE: EXPECT RUNWAY ASSIGNMENT ON INITIAL CONTACT WITH DENVER TRACON.
NOTE: LANDING NORTH SELECT RWY 35L TRANSITION.
NOTE: LANDING SOUTH SELECT RWY 17R TRANSITION.
NOTE: LANDING EAST SELECT RWY 7 TRANSITION.
NOTE: LANDING WEST SELECT RWY 26 TRANSITION.

FIXES AND/OR HOLDING PATTERNS:

CHART HOLDING AT HAGGR: HOLD SE, RT, 303.54 INBOUND, 10 NM LEGS.
CHART HOLDING AT JAAAM: HOLD SE, LT, 300.23 INBOUND, 10 NM LEGS.
CHART HOLDING AT IDOLL: HOLD SE, LT, 304.74 INBOUND, 11 NM LEGS.
CHART HOLDING AT KOORN: HOLD SE, LT, 305.05 INBOUND, 12 NM LEGS.
CHART HOLDING AT LYNKN: HOLD SE, RT, 293.84 INBOUND, 12 NM LEGS.
CHART HOLDING AT NARNO: HOLD SE, RT, 328.96 INBOUND, 12 NM LEGS.
CHART HOLDING AT NIIXX: HOLD SE, LT, 304.15 INBOUND, 10 NM LEGS.

COMMUNICATIONS:

CHART: DENVER ARTCC.
CHART: DENVER TOWER.

AIRPORTS SERVED:

<u>AIRPORT ID</u>	<u>CITY</u>	<u>STATE</u>
DEN	DENVER	CO

LOST COMMUNICATIONS PREFERENCES:

IN THE EVENT OF LOST COMMUNICATIONS PRIOR TO RUNWAY TRANSITION ASSIGNMENT, WHEN DEN IS LANDING SOUTH, EXECUTE THE ILS RWY 17R, WHEN DEN IS LANDING NORTH, EXECUTE THE ILS RWY 35L

REMARKS:

MEA'S FL190 AND ABOVE NEEDED TO MITIGATE CRITICAL DME'S AND INSURE ADEQUATE SIGNAL RECEPTION FOR DME/DME/IRU NAVIGATION.

ADDITIONAL FLIGHT DATA:

DME/DME ASSESSMENT: SAT (RNP 2.0)
REFERENCE MAGNETIC VARIATION: DEN 08E/2015
CHART AT QWIKI TERMINUS: DEN LDG RWY 16L, 17L/R
CHART AT BBOOK TERMINUS: DEN LDG RWY 7, 8

FEDERAL AVIATION ADMINISTRATION
FLIGHT STANDARDS SERVICE
STANDARD TERMINAL ARRIVAL (STAR)

Bearings, headings, courses, tracks and radials are magnetic. Elevations and altitudes are in feet, MSL. Altitudes are minimum altitudes unless otherwise indicated.
Ceilings are in feet above airport elevation. Distances are in nautical miles. Visibilities are in statute miles or feet RVR unless otherwise indicated.

Arrival Name	Number	STAR Computer Code	Superseded Number	Dated	Effective Date
NIIXX (RNAV)	FOUR	NIIXX.NIIXX4	THREE	10/07/2021	12 JUN 25

CHART AT GEILS TERMINUS: DEN LDG RWY 25, 26
CHART AT CLFFF TERMINUS: DEN LDG RWY 16R
CHART AT BOSSS TERMINUS: DEN LDG RWY 34L/R, 35L/R

FLIGHT INSPECTED BY:	<i>Digitally signed by</i> ROBERT G HAMILTON	ORGANIZATION:	DATE:		
JEREMY C LEIGHTON	Feb 06, 2025	AJF	01/23/2025	Flight Inspected Signature:	_____
DEVELOPED BY:	<i>Digitally signed by</i> ROBERT G HAMILTON	ZDV	05/01/2024	Developed By Signature:	_____
Jenifer Nordstrom	Feb 06, 2025	Airspace&Procedures			
APPROVED BY:	<i>Digitally signed by</i> ROBERT G HAMILTON	AJV-A430		Approved By Signature:	_____
Bev Bordy	Feb 06, 2025				

CHANGES:

1. REMOVED NOTE: TURBOJET AIRCRAFT DESCEND VIA MACH NUMBER UNTIL INTERCEPTING 280 KIAS. MAINTAIN 280 KIAS UNTIL SLOWED BY STAR.
2. ADDED 280 KIAS RESTRICTION AT NIIXX.
3. ADDED HOLDING AT JAAAM WP: HOLD SE, LT, 300.23 INBOUND, 10 NM LEGS.
4. ADDED YOUTU BETWEEN IDOLL AND NIIXX.
5. CHANGED MAX ALTITUDE RESTRICTION AT HAGGR FROM FL200 TO FL190.
6. CHANGED LOST COMMUNICATIONS FROM EXECUTE ILS RWY 35R TO EXECUTE ILS RWY 35L.
7. CHANGED NOTE: FROM LANDING NORTH SELECT RWY 35R TO LANDING NORTH SELECT RWY 35L.
8. REMOVED DEN APP CON FROM COMMUNICATIONS.
9. ADDED DEN ARTCC TO COMMUNICATIONS.
10. REVISED MEAs.
11. REMOVED AIRPORT NAME FROM AIRPORTS SERVED AND ADDED AIRPORT ID; REMOVED K IDENT FROM 17.1 FORM.
12. CHANGED TURBOJET NOTE TO REFLECT JET.
13. EQUIPMENT REQUIREMENTS NOTE CHANGED FROM RADAR REQUIRED FOR NON-GPS EQUIPPED AIRCRAFT TO RADAR REQUIRED.
14. MOCA VALUES ADDED FOR ALL TRANSITION ROUTE SEGMENTS.

REASONS:

- 1-2. TO SATISFY ERC/ATSAP AND ZDV/D01 SAFETY COUNCIL RECOMMENDATIONS.
3. ATC REQUEST.
4. ATC REQUEST FOR SPEED MANAGEMENT.
5. ATC REQUEST TO CONTAIN AIRCRAFT WITHIN ANTICIPATED DESCENT PROFILE.
6. ATC REQUEST TO MATCH NOTE CHANGE.
7. ATC REQUEST OPERATIONAL NEED.
8. APPROACH CONTROL AUTOMATICALLY CHARTED AND DOES NOT NEED TO BE DOCUMENTED IN THIS SECTION IAW 8260.19J PARA 4-5-12(F).

FEDERAL AVIATION ADMINISTRATION
FLIGHT STANDARDS SERVICE
STANDARD TERMINAL ARRIVAL (STAR)

Bearings, headings, courses, tracks and radials are magnetic. Elevations and altitudes are in feet, MSL. Altitudes are minimum altitudes unless otherwise indicated.
Ceilings are in feet above airport elevation. Distances are in nautical miles. Visibilities are in statute miles or feet RVR unless otherwise indicated.

Arrival Name	Number	STAR Computer Code	Superseded Number	Dated	Effective Date
NIIXX (RNAV)	FOUR	NIIXX.NIIXX4	THREE	10/07/2021	12 JUN 25

9. ATC REQUEST.

10. NEW OBSTACLE/TERRAIN EVALUATION AND DME/DME ASSESSMENT.

11-12. IAW 8260.19J DOCUMENTATION STANDARDS.

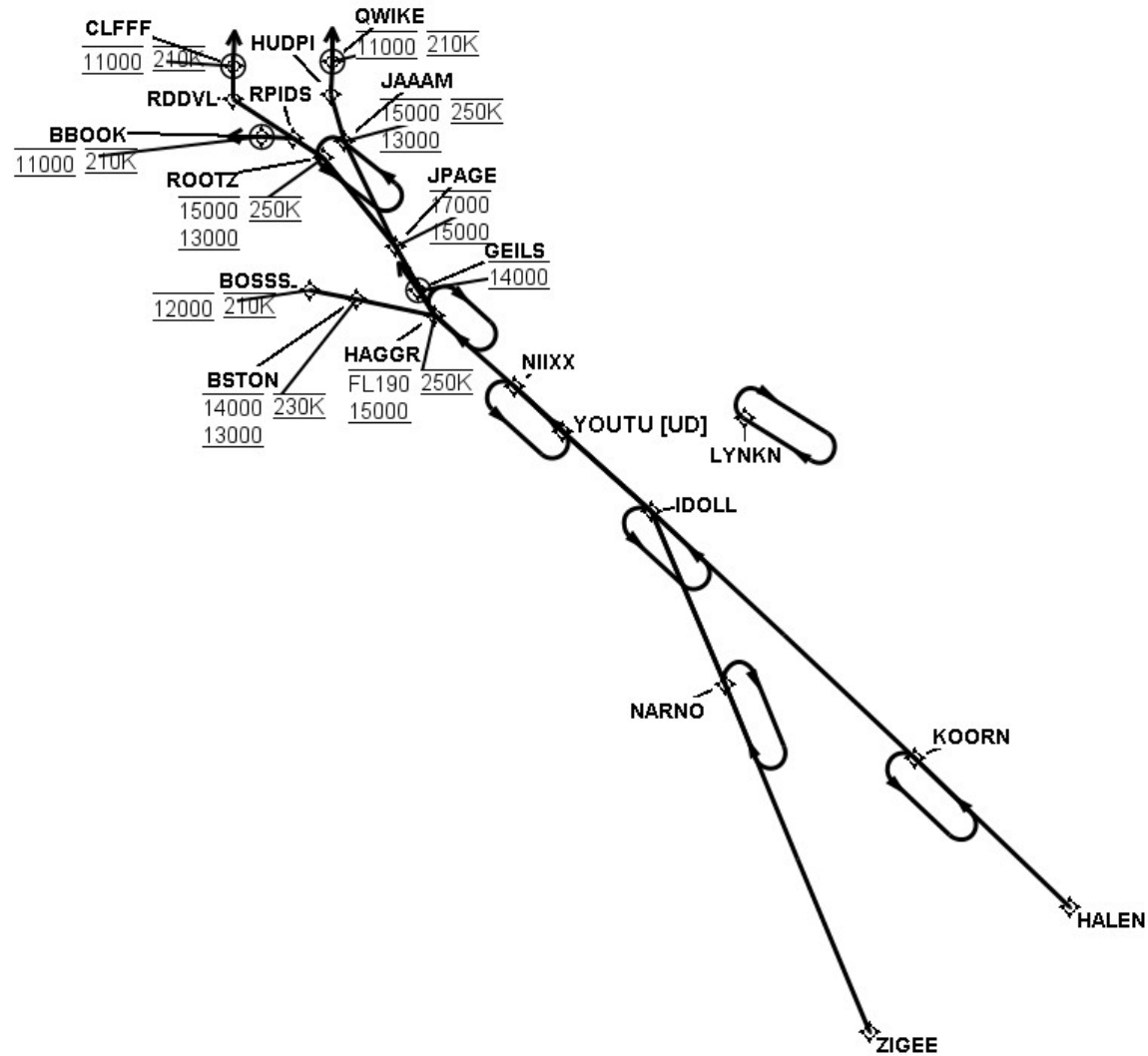
13. REQUIRED FOR RADAR VECTORS IAW 8260.19J 4-5-12.d.(2)(b)

14. MOCA ALWAYS DOCUMENTED IAW 8260.19J 4-5-12.b.(8)

FEDERAL AVIATION ADMINISTRATION
FLIGHT STANDARDS SERVICE
STANDARD TERMINAL ARRIVAL (STAR)

Bearings, headings, courses, tracks and radials are magnetic. Elevations and altitudes are in feet, MSL. Altitudes are minimum altitudes unless otherwise indicated.
Ceilings are in feet above airport elevation. Distances are in nautical miles. Visibilities are in statute miles or feet RVR unless otherwise indicated.

Arrival Name	Number	STAR Computer Code	Superseded Number	Dated	Effective Date
NIIXX (RNAV)	FOUR	NIIXX.NIIXX4	THREE	10/07/2021	12 JUN 25
Graphic Depiction 1					



**FEDERAL AVIATION ADMINISTRATION
FLIGHT STANDARDS SERVICE
STAR (DATA RECORD)**

Arrival Name NIIXX (RNAV)		Number FOUR		STAR Computer Code NIIXX.NIIXX4			Superseded Number THREE		Dated 10/07/2021	Effective Date 12 JUN 25
FIX/NAVAID	LAT/LONG	C	FO/FB	LEG TYPE	TC	DIST (NM)	ALTITUDE	SPEED	REMARKS	
En Route Transition										
HALEN	374951.85N / 1020757.15W	Y		IF					HALEN.NIIXX4	
KOORN	381204.14N / 1023809.79W	Y	FB	TF	313.05	32.59				
IDOLL	384845.14N / 1032909.11W	Y	FB	TF	312.74	54.27				
YOUTU	390050.27N / 1034617.72W	Y	FB	TF	312.15	18.02				
NIIXX	390731.50N / 1035550.96W	Y	FB	TF	311.97	10.00	FL190BFL220	AT 280K		
En Route Transition										
NARNO	382255.94N / 1031448.55W	Y		IF					NARNO.NIIXX4	
IDOLL	384845.14N / 1032909.11W	Y	FB	TF	336.52	28.14				
YOUTU	390050.27N / 1034617.72W	Y	FB	TF	312.15	18.02				
NIIXX	390731.50N / 1035550.96W	Y	FB	TF	311.97	10.00	FL190BFL220	AT 280K		
En Route Transition										
ZIGEE	373110.35N / 1024648.58W	Y		IF					ZIGEE.NIIXX4	
NARNO	382255.94N / 1031448.55W	Y	FB	TF	336.96	56.25				
IDOLL	384845.14N / 1032909.11W	Y	FB	TF	336.52	28.14				
YOUTU	390050.27N / 1034617.72W	Y	FB	TF	312.15	18.02				
NIIXX	390731.50N / 1035550.96W	Y	FB	TF	311.97	10.00	FL190BFL220	AT 280K		
Common Route										
NIIXX	390731.50N / 1035550.96W	Y		IF			FL190BFL220	AT 280K	NIIXX.NIIXX4	
HAGGR	391805.92N / 1041114.17W	Y	FB	TF	311.54	15.96	15000BFL190	AT 250K		
Runway Transition										
HAGGR	391805.92N / 1041114.17W	Y		IF			15000BFL190	AT 250K		
JPAGE	392825.99N / 1041858.48W	Y	FB	TF	329.88	11.94	15000B17000			
ROOTZ	394138.07N / 1043259.98W	Y	FB	TF	320.65	17.07	13000B15000	AT 250K		
RPIDS	394434.57N / 1043848.54W	Y	FB	TF	303.28	05.36				

**FEDERAL AVIATION ADMINISTRATION
FLIGHT STANDARDS SERVICE
STAR (DATA RECORD)**

Arrival Name NIIXX (RNAV)		Number FOUR		STAR Computer Code NIIXX.NIIXX4		Superseded Number THREE		Dated 10/07/2021	Effective Date 12 JUN 25
FIX/NAVAID	LAT/LONG	C	FO/FB	LEG TYPE	TC	DIST (NM)	ALTITUDE	SPEED	REMARKS
BBOOK	394439.67N / 1044456.83W	Y	FO	TF	271.06	04.74	AT 11000	AT 210K	
KDEN:RWY 7,RWY 8				FM	271.06				
Runway Transition									
HAGGR	391805.92N / 1041114.17W	Y		IF			15000BFL190	AT 250K	
JPAGE	392825.99N / 1041858.48W	Y	FB	TF	329.88	11.94	15000B17000		
JAAAM	394357.46N / 1042857.43W	Y	FB	TF	333.61	17.32	13000B15000	AT 250K	
HUDPI	395055.21N / 1043122.20W	Y	FB	TF	345.05	07.20			
QWIKI	395555.43N / 1043118.56W	Y	FO	TF	000.53	05.00	AT 11000	AT 210K	
KDEN:RWY 16L,RWY 17L,RWY 17R				FM	000.53				
Runway Transition									
HAGGR	391805.92N / 1041114.17W	Y		IF			15000BFL190	AT 250K	
JPAGE	392825.99N / 1041858.48W	Y	FB	TF	329.88	11.94	15000B17000		
ROOTZ	394138.07N / 1043259.98W	Y	FB	TF	320.65	17.07	13000B15000	AT 250K	
RPIDS	394434.57N / 1043848.54W	Y	FB	TF	303.28	05.36			
RDDVL	395019.88N / 1045024.03W	Y	FB	TF	302.83	10.63			
CLFFF	395520.10N / 1045020.55W	Y	FO	TF	000.51	05.00	AT 11000	AT 210K	
KDEN:RWY 16R				FM	000.51				
Runway Transition									
HAGGR	391805.92N / 1041114.17W	Y		IF			15000BFL190	AT 250K	
GEILS	392146.91N / 1041434.45W	Y	FO	TF	324.88	04.50	AT 14000		
KDEN:RWY 25,RWY 26				FM	324.88				

FEDERAL AVIATION ADMINISTRATION
FLIGHT STANDARDS SERVICE
STAR (DATA RECORD)

Arrival Name NIIXX (RNAV)	Number FOUR	STAR Computer Code NIIXX.NIIXX4			Superseded Number THREE		Dated 10/07/2021	Effective Date 12 JUN 25	
<u>FIX/NAVAID</u>	<u>LAT/LONG</u>	<u>C</u>	<u>FO/FB</u>	<u>LEG TYPE</u>	<u>TC</u>	<u>DIST (NM)</u>	<u>ALTITUDE</u>	<u>SPEED</u>	<u>REMARKS</u>
Runway Transition									
HAGGR	391805.92N / 1041114.17W	Y		IF			15000BFL190	AT 250K	
BSTON	392030.89N / 1042624.58W	Y	FB	TF	281.67	12.02	13000B14000	AT 230K	
BOSSS	392155.61N / 1043525.77W	Y	FB	TF	281.45	07.14	AT 12000	AT 210K	
KDEN:RWY 34L,RWY 34R,RWY 35L,RWY 35R									