

FEDERAL AVIATION ADMINISTRATION
 FLIGHT STANDARDS SERVICE
 STANDARD TERMINAL ARRIVAL (STAR)

Bearings, headings, courses, tracks and radials are magnetic. Elevations and altitudes are in feet, MSL. Altitudes are minimum altitudes unless otherwise indicated. Distances are in nautical miles (NM). Graphic depictions attached.

Arrival Name SUUTR (RNAV)	Number FOUR	STAR Computer Code SUUTR.SUUTR4	Superseded Number THREE	Dated 05/21/2020	Effective Date 14JULY2022
-------------------------------------	-----------------------	---	-----------------------------------	----------------------------	-------------------------------------

TRANSITION ROUTES:

Transition Name	Transition Computer Codes	From FIX/NAVAID	To FIX/NAVAID	Course	Distance	MEA	MOCA	MAA	Crossing Altitudes / Fixes
NURAY	NURAY.SUUTR4	NURAY	NURAY						
			KAELA	314.61	48.65	15000	2800		AT/ABOVE FL280
			SUUTR	315.15	13.36	15000	2800		BETWEEN FL240 AND FL260

ARRIVAL ROUTE DESCRIPTION:

FROM SUUTR ON TRACK 308.42/9.97 TO CROSS FOOLZ AT FL210, THEN ON TRACK 308.47/10.65 TO CROSS GLDDD AT OR BELOW FL190, THEN ON TRACK 308.39/9.19 TO CROSS WRAPS AT OR BELOW 17000, THEN ON TRACK 308.19/16.67 TO CROSS PNNEN BETWEEN 12000 AND 16000 AND AT 280 KIAS, THEN ON TRACK 297.69/10.00 TO SLUIC.

LANDING RWY 17L/R: FROM SLUIC ON TRACK 297.74/3.06 TO CROSS AMADR AT 9000, THEN ON TRACK 302.11/21.90 TO CROSS NGGET BETWEEN 7000 AND 9000, THEN ON TRACK 308.71/8.20 TO CROSS CHNEL AT OR ABOVE 5000, THEN ON TRACK 330.23/8.10 TO CROSS OVOME AT 4000 AND AT 210 KIAS, THEN ON TRACK 348.00. EXPECT ASSIGNED INSTRUMENT APPROACH OR RADAR VECTORS TO FINAL APPROACH COURSE.

LANDING RWY 35L/R: FROM SLUIC ON TRACK 297.59/2.96 TO CROSS MYNRR AT 9000, THEN ON TRACK 299.00. EXPECT ASSIGNED INSTRUMENT APPROACH PROCEDURE OR RADAR VECTORS TO FINAL APPROACH COURSE.

PBN REQUIREMENT NOTES

RNAV 1 - DME/DME/IRU OR GPS

EQUIPMENT REQUIREMENT NOTES

RADAR REQUIRED

PROCEDURAL DATA NOTES:

NOTE: EXPECT RUNWAY ASSIGNMENT PRIOR TO PNNEN.

FIXES AND/OR HOLDING PATTERNS:

CHART HOLDING AT NURAY: HOLD SE, LT, 314.79 INBOUND, 10 NM LEGS.

COMMUNICATIONS:

- CHART: ZOA.
- CHART: NORCAL APP CON.
- CHART: ATCT.
- CHART: GND CON.

AIRPORTS SERVED:

SACRAMENTO INTL, SACRAMENTO, CA (KSMF)

LOST COMMUNICATIONS PROCEDURE:

REMARKS:

- RF REQUIRED FOR 17L/R RNP IAPS AT OVOME.
- MEA(s) BASED ON MINIMUM DME/DME ASSESSMENT.



FEDERAL AVIATION ADMINISTRATION
 FLIGHT STANDARDS SERVICE
 STANDARD TERMINAL ARRIVAL (STAR)

Bearings, headings, courses, tracks and radials are magnetic. Elevations and altitudes are in feet, MSL. Altitudes are minimum altitudes unless otherwise indicated. Distances are in nautical miles (NM). Graphic depictions attached.

Arrival Name	Number	STAR Computer Code	Superseded Number	Dated	Effective Date
SUUTR (RNAV)	FOUR	SUUTR.SUUTR4	THREE	05/21/2020	14JULY2022

ADDITIONAL FLIGHT DATA:

DME/DME ASSESSMENT: SAT (RNP 2.0)
 REFERENCE MAGNETIC VARIATION = KSMF 13E/2020
 CHART AT MYNRR TERMINUS: KSMF LDG RWY 35L/R.
 CHART AT OVOME TERMINUS: KSMF LDG RWY 17L/R.

FLIGHT INSPECTED BY:

CARL J VEER
 Name

FPO
 Organization

10/29/2021
 Date

Digitally signed by
DONALD H LANIER
 Mar 16, 2022 Signature

DEVELOPED BY:

KELLY DEAN
 Name

AJV-A431
 Organization

08/24/2021
 Date

Digitally signed by
KELLY D DEAN
 Sep 14, 2021 Signature

APPROVED BY:

LONNIE EVERHART, MANAGER
 Name

AJV-A430
 Organization

Date

Digitally signed by
DONALD H LANIER
 Mar 16, 2022 Signature

CHANGES:

1. CHANGED THE NAME OF TRLOC WAYPOINT TO KAELA WAYPOINT AND CHANGED ALTITUDE FROM AT OR ABOVE FL290 TO AT OR ABOVE FL280.
2. CHANGED ALTITUDE RESTRICTION AT FOOLZ WAYPOINT FROM AT OR BELOW FL210 TO AT FL210.
3. ADDED WRAPS WAYPOINT WITH ALTITUDE RESTRICTION OF AT OR BELOW 17000.
4. CHANGED ALTITUDE RESTRICTION AT PNNEN FROM 12000BFL190 TO 12000B16000
5. ADDED SLUIC WAYPOINT AND MADE SLUIC WAYPOINT END OF COMMON ROUTE.
6. REMOVED SPEED 240 KIAS AND CHANGED ALTITUDE FROM AT OR ABOVE 9000 TO AT 9000 AT MYNRR WAYPOINT.
7. MADE MYNRR WAYPOINT STAR TERMINUS FOR RWY 35L/R AND CHANGED FROM FLYBY TO FLYOVER WITH FM LEG HEADING 299.
8. REMOVED MYNRR WAYPOINT FROM RWY 17L/R RUNWAY TRANSITION.
9. ADDED AMADR WAYPOINT TO RWY 17L/R RUNWAY TRANSITION WITH ALTITUDE RESTRICTION OF AT 9000.
10. CHANGED ALTITUDE AT NGGET WAYPOINT FROM 7000B10000 TO 7000B9000.
11. REMOVED ELKOE WAYPOINT.
12. ADDED CHNEL WAYPOINT WITH ALTITUDE RESTRICTION OF AT OR ABOVE 5000.
13. MOVED OVOME WAYPOINT 0.23 NM WEST.
14. REMOVED FIKAN, FIPIN, AND ELMAC WAYPOINTS.
15. ADDED RUNWAY TERMINUS DATA CHARTING AT MYNRR FOR RWY 35L/R AND AT OVOME FOR RWY 17L/R.
16. REMOVED NOTE: EXPECT TO RECEIVE TRANSITION (SOUTH/NORTH) AND "DESCEND VIA" CLEARANCE FROM OAKLAND CENTER. NORTHERN CALIFORNIA TRACON WILL ASSIGN LANDING RUNWAY.
17. REMOVED NOTE: SOUTH TRANSITION INDICATES RWYS 17L/R.
18. REMOVED NOTE: NORTH TRANSITION INDICATES RWYS 35L/R.
19. REMOVED MEAs FROM RUNWAY TRANSITION AND COMMON ROUTE.



FEDERAL AVIATION ADMINISTRATION
 FLIGHT STANDARDS SERVICE
 STANDARD TERMINAL ARRIVAL (STAR)

Bearings, headings, courses, tracks and radials are magnetic. Elevations and altitudes are in feet, MSL. Altitudes are minimum altitudes unless otherwise indicated.
 Distances are in nautical miles (NM). Graphic depictions attached.

Arrival Name	Number	STAR Computer Code	Superseded Number	Dated	Effective Date
SUUTR (RNAV)	FOUR	SUUTR.SUUTR4	THREE	05/21/2020	14JULY2022

- 20. ADDED NOTE: EXPECT RUNWAY ASSIGNMENT PRIOR TO PNNEN.
- 21. RAISED MEA NURAY TO SUUTR FROM 12000 TO 15000.
- 22. ADDED FM LEG FROM OVOME TOWARD FIKAN.
- 23. CHANGED NOTE: ADDED TO 35L/R ARRIVAL TEXT TO EXPECT RADAR VECTORS.
- 24. CHANGED MOCA AT KAELA FROM 2200 TO 2800.

REASONS:

- 1-12. ATC REQUEST.
- 13. CONFORM TO CRITERIA.
- 14. ATC REQUEST.
- 15. CONFORM TO CRITERIA.
- 16-18. ATC REQUEST.
- 19. CONFORM TO CRITERIA.
- 20. ATC REQUEST.
- 21. NEW DME/DME ASSESSMENT REQUIREMENT.
- 22. ATC REQUEST TO FACILITATE AIRCRAFT TOWARD DOWNWIND WHEN NOT ASSIGNED APPROACH CLEARANCE.
- 23. TO COMPLY WITH 8260.19I, 4-5-3G.
- 24. TO COMPLY WITH 7/1/21 MEMO PER AIS QC.

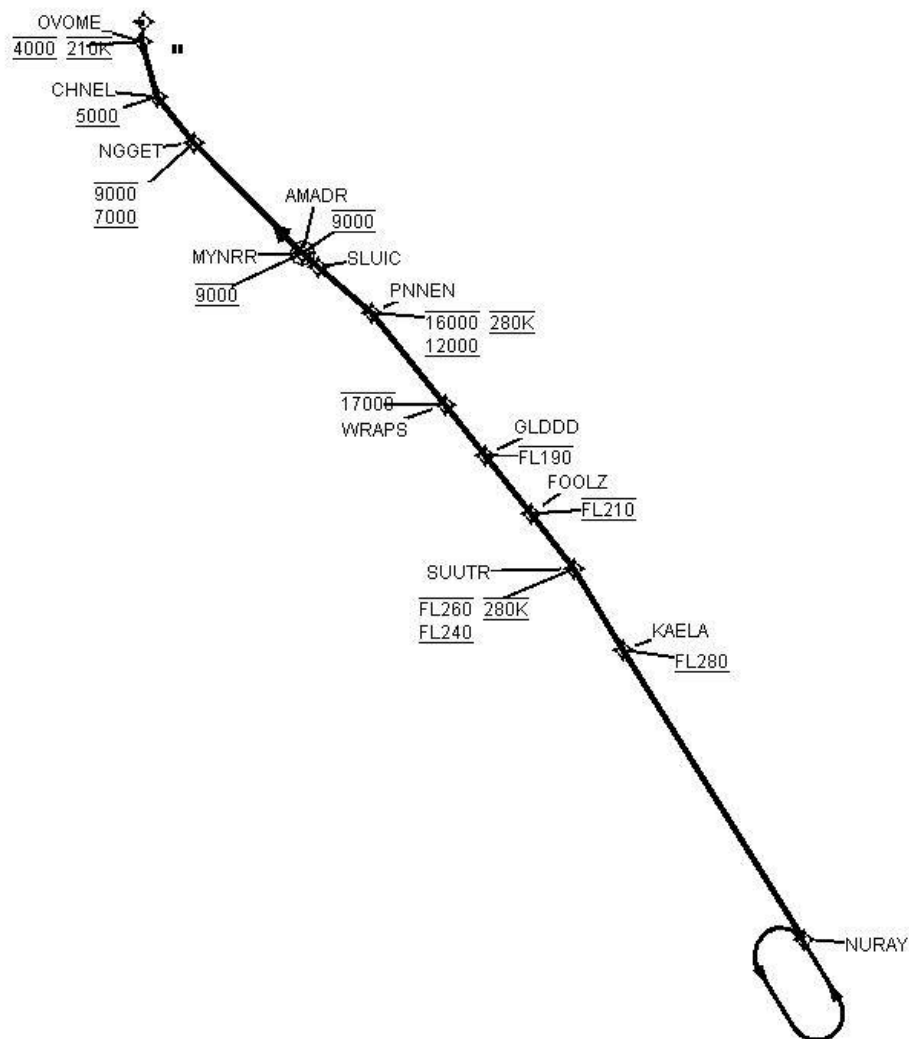


FEDERAL AVIATION ADMINISTRATION
FLIGHT STANDARDS SERVICE
STANDARD TERMINAL ARRIVAL (STAR)

Bearings, headings, courses, tracks and radials are magnetic. Elevations and altitudes are in feet, MSL. Altitudes are minimum altitudes unless otherwise indicated. Distances are in nautical miles (NM). Graphic depictions attached.

Arrival Name	Number	STAR Computer Code	Superseded Number	Dated	Effective Date
SUUTR (RNAV)	FOUR	SUUTR.SUUTR4	THREE	05/21/2020	14JULY2022

Graphic Depiction 1

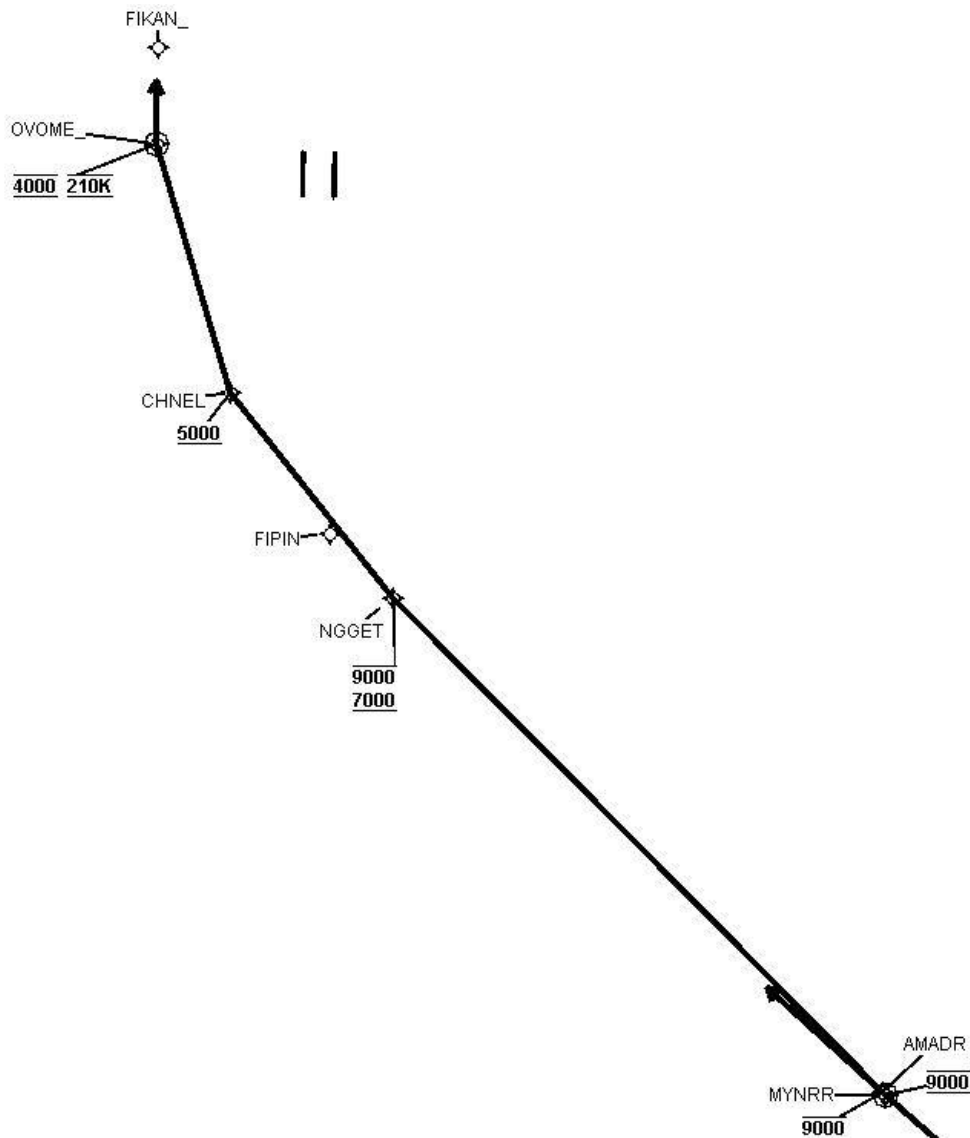


FEDERAL AVIATION ADMINISTRATION
FLIGHT STANDARDS SERVICE
STANDARD TERMINAL ARRIVAL (STAR)

Bearings, headings, courses, tracks and radials are magnetic. Elevations and altitudes are in feet, MSL. Altitudes are minimum altitudes unless otherwise indicated. Distances are in nautical miles (NM). Graphic depictions attached.

Arrival Name	Number	STAR Computer Code	Superseded Number	Dated	Effective Date
SUUTR (RNAV)	FOUR	SUUTR.SUUTR4	THREE	05/21/2020	14JULY2022

Graphic Depiction 2



FEDERAL AVIATION ADMINISTRATION
 FLIGHT STANDARDS SERVICE
 STAR (DATA RECORD)

Arrival Name SUUTR (RNAV)	Number FOUR	STAR Computer Code SUUTR.SUUTR4	Superseded Number THREE	Dated 05/21/2020	Effective Date 14JULY2022
-------------------------------------	-----------------------	---	-----------------------------------	----------------------------	-------------------------------------

FIX/NAVAID	LAT/LONG	C	FO/FB	LEG TYPE	TC	DIST (NM)	ALTITUDE	SPEED	REMARKS
En Route Transition									
NURAY	363544.75N / 1194205.28W	Y		IF					NURAY.SUUTR4
KAELA	371648.37N / 1201444.83W	Y	FB	TF	327.61	48.65	AT/ABOVE FL280		
SUUTR	372809.53N / 1202336.04W	Y	FB	TF	328.15	13.36	FL240BFL260	AT 280K	

Common Route									
SUUTR	372809.53N / 1202336.04W	Y		IF			FL240BFL260	AT 280K	SUUTR.SUUTR4
FOOLZ	373557.25N / 1203125.30W	Y	FB	TF	321.42	09.97	AT FL210		
GLDDD	374417.27N / 1203946.87W	Y	FB	TF	321.47	10.65	AT/BELOW FL190		
WRAPS	375128.60N / 1204701.48W	Y	FB	TF	321.39	09.19	AT/BELOW 17000		
PNNEN	380427.91N / 1210015.20W	Y	FB	TF	321.19	16.67	12000B16000	AT 280K	
SLUIC	381059.10N / 1210952.24W	Y	FB	TF	310.69	10.00			

Runway Transition									
SLUIC	381059.10N / 1210952.24W	Y		IF					
AMADR	381259.17N / 1211248.99W	Y	FB	TF	310.74	03.06	AT 9000		
NGGET	382829.24N / 1213229.81W	Y	FB	TF	315.11	21.90	7000B9000		
CHNEL	383455.55N / 1213858.55W	Y	FB	TF	321.71	08.20	AT/ABOVE 5000		
OVOME	384241.04N / 1214157.56W	Y	FO	TF	343.23	08.10	AT 4000	AT 210K	
KSMF:RWY 17L,RWY 17R				FM	001.00				

Runway Transition									
SLUIC	381059.10N / 1210952.24W	Y		IF					
MYNRR	381254.91N / 1211243.62W	Y	FO	TF	310.59	02.96	AT 9000		
KSMF:RWY 35L,RWY 35R				FM	312.00				

