

LOC/DME I-RFD 109.3 Chan 30	APP CRS 185°	Rwy Idg 8099 TDZE 736 Apt Elev 736
---	------------------------	---

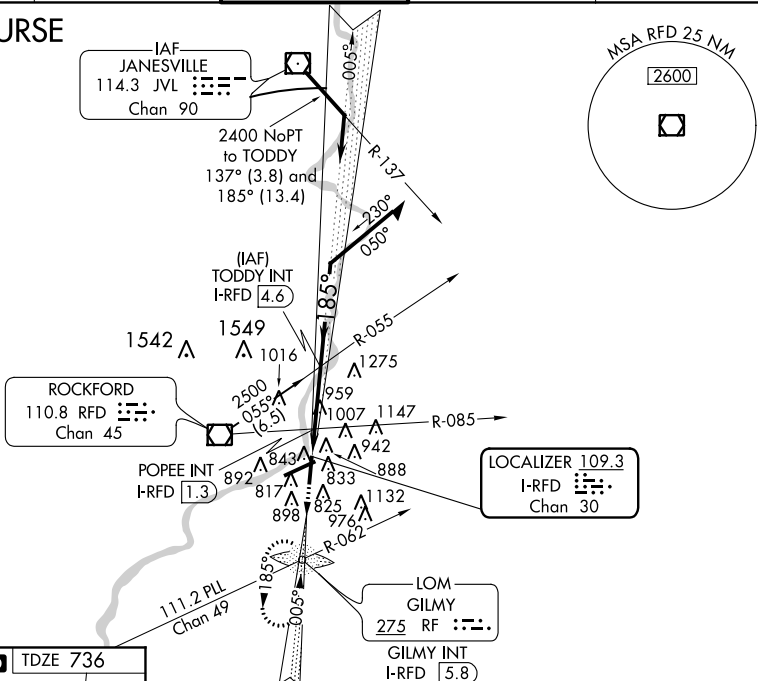
LOC BC RWY 19

CHICAGO/ROCKFORD INTL (RFD)

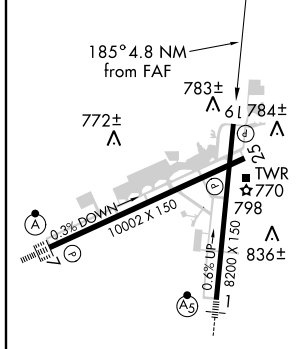
ASR	MISSED APPROACH: Climb to 2500 via I-RFD LOC S course to GILMY LOM/INT/I-RFD 5.8 DME and hold.			
-----	--	--	--	--

ATIS 127.6	ROCKFORD APP CON 121.0 327.0	ROCKFORD TOWER 118.1 239.0	GND CON 121.9 239.0	CLNC DEL 119.25
----------------------	--	--------------------------------------	-------------------------------	---------------------------

BACK COURSE

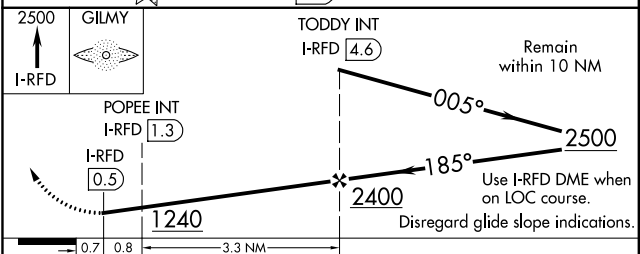


ELEV 736	D	TDZE 736
----------	----------	----------



REIL Rwy 19 and 25
HIRL Rwy 1-19 and 7-25
TDZ/CL Rwy 1 and 7

FAF to MAP 4.1 NM					
Knots	60	90	120	150	180
Min:Sec	4:06	2:44	2:03	1:38	1:22



CATEGORY	A	B	C	D
S-19	1240-1	504 (500-1)	1240-1½	504 (500-1½)
CIRCLING	1240-1	504 (600-1)	1240-1½	1320-2 584 (600-2)
POPEE INT/DME MINIMUMS				
S-19	1140-1	404 (400-1)	1140-1¼	404 (400-1¼)
CIRCLING	1220-1	1240-1	1240-1½	1320-2 584 (600-2)

EC-3, 21 JUN 2018 to 19 JUL 2018

EC-3, 21 JUN 2018 to 19 JUL 2018