

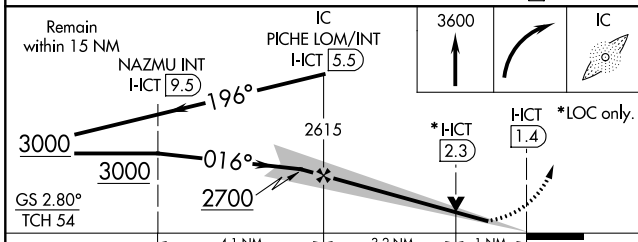
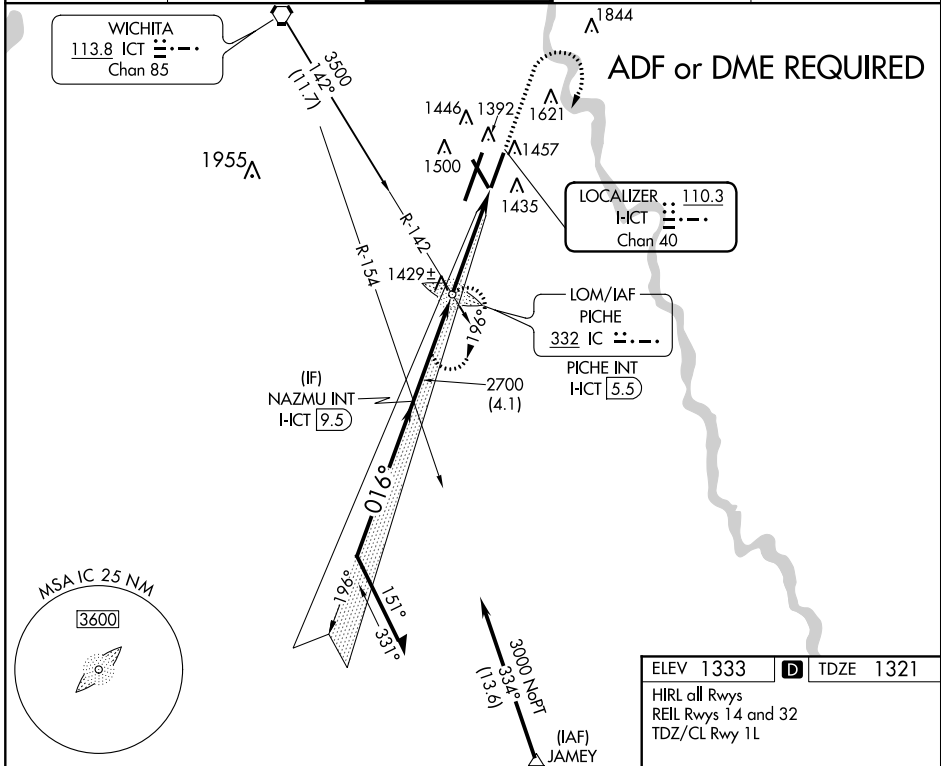
LOC/DME HCT 110.3 Chan 40	APP CRS 016°	Rwy Idg TDZE Apt Elev	7301 1321 1333
--	------------------------	-----------------------------	---

ILS or LOC RWY 1R

WICHITA DWIGHT D EISENHOWER NATIONAL (ICT)

<p>Simultaneous approach authorized with Rwy 1L. ADF or DME required. #RVR 1800 authorized with the use of FD or AP or HUD to DA.</p>	<p>MALS R</p>	<p>MISSED APPROACH: Climb to 3600 then right turn direct PICHE LOM/INT/I-CT 5.5 DME and hold.</p>
---	---------------	---

ATIS 125.15	WICHITA APP CON 126.7 353.5	WICHITA TOWER 118.2 257.8	GND CON 121.9 348.6	CLNC DEL 125.7
-----------------------	---------------------------------------	-------------------------------------	-------------------------------	--------------------------



ELEV 1333	D	TDZE 1321			
HIRL all Rwys REIL Rwys 14 and 32 TDZ/CL Rwy 1L					
<p>1360</p> <p>1030 X 150</p> <p>2001 X 150</p> <p>2001 X 150</p> <p>1R</p> <p>016° 4.1 NM from FAF</p> <p>FAF to MAP 4.1 NM</p>					
CIRCLING	60	90	120	150	180
	4:06	2:44	2:03	1:38	1:22

CATEGORY	A	B	C	D	E
S-ILS 1R#	1521/24 200 (200-½)				
S-LOC 1R	1680/24	359 (400-½)	1680/40		359 (400-¾)
CIRCLING	1800-1	467 (500-1)	1800-1½	1900-2	2000-2¼
	467 (500-1½)		567 (600-2)	667 (700-2¼)	

NC-2, 21 JUN 2018 to 19 JUL 2018

NC-2, 21 JUN 2018 to 19 JUL 2018