

WAAS CH <b>99617</b> <b>W32A</b>	APP CRS <b>326°</b>	Rwy Idg TDZE Apt Elev	<b>6301</b> <b>1322</b> <b>1333</b>
--	------------------------	-----------------------------	---

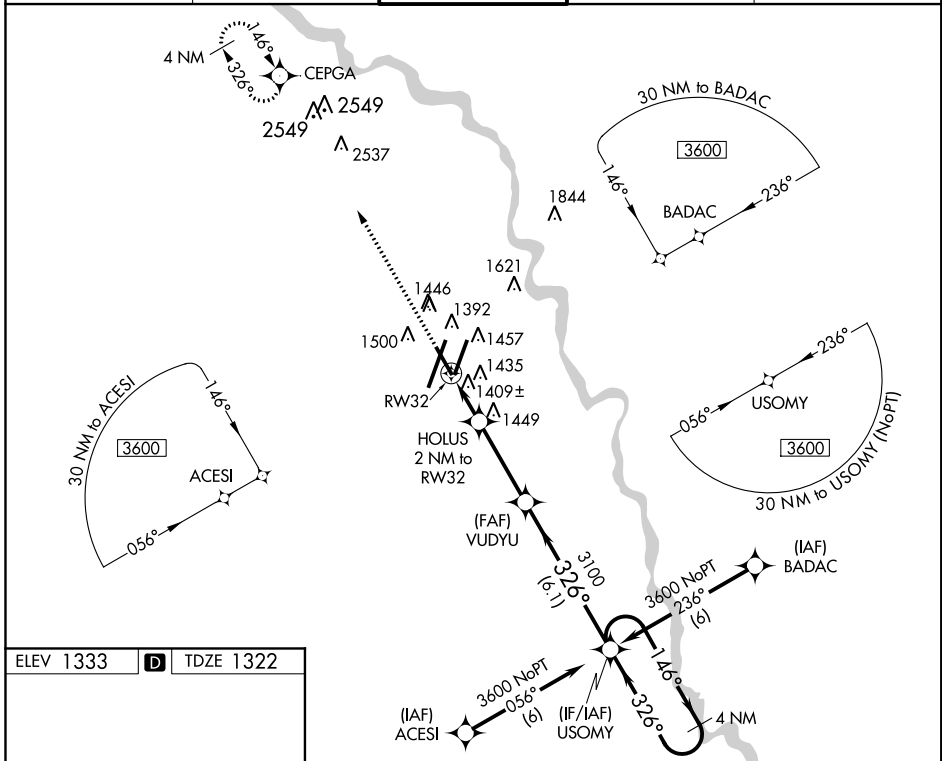
# RNAV (GPS) RWY 32

WICHITA DWIGHT D EISENHOWER NATIONAL (ICT)

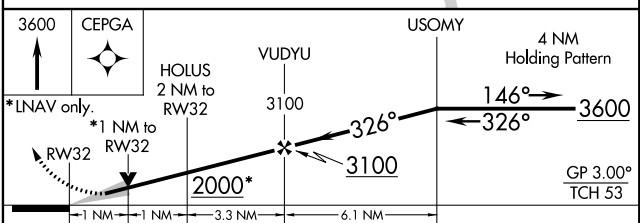
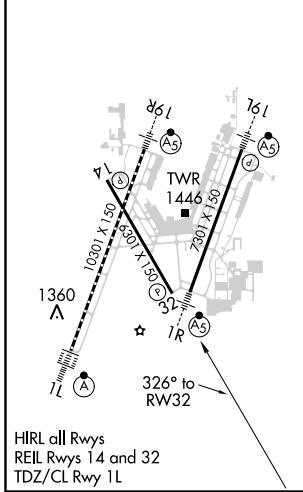
For uncompensated Baro-VNAV systems, LNAV/VNAV NA below -15°C (5°F) or above 54°C (130°F). DME/DME RNP-0.3 NA.

MISSED APPROACH: Climb to 3600 direct CEPGA and hold.

ATIS <b>125.15</b>	WICHITA APP CON <b>126.7 353.5</b>	WICHITA TOWER <b>118.2 257.8</b>	GND CON <b>121.9 348.6</b>	CLNC DEL <b>125.7</b>
-----------------------	---------------------------------------	-------------------------------------	-------------------------------	--------------------------



ELEV 1333	<b>D</b>	TDZE 1322
-----------	----------	-----------



CATEGORY	A	B	C	D
LPV DA		1572-3/4	250 (300-3/4)	
LNAV/VNAV DA		1761-1 1/2	439 (500-1 1/2)	
LNAV MDA		1680-1 358 (400-1)		1680-1 1/4 358 (400-1 1/4)
CIRCLING	1800-1 467 (500-1)		1800-1 1/2 467 (500-1 1/2)	1900-2 567 (600-2)

NC-2, 21 JUN 2018 to 19 JUL 2018

NC-2, 21 JUN 2018 to 19 JUL 2018