

APP CRS	Rwy Idg	<b>10301</b>
<b>196°</b>	TDZE	<b>1330</b>
	Apt Elev	<b>1333</b>

# RNAV (RNP) Z RWY 19R

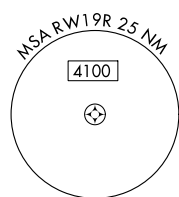
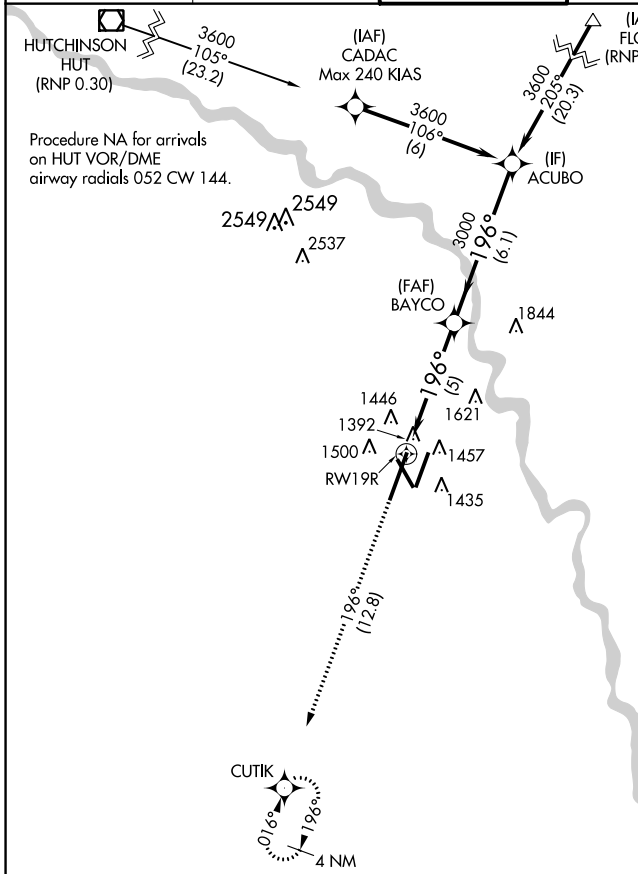
WICHITA DWIGHT D EISENHOWER NATIONAL (ICT)

▼ For uncompensated Baro-VNAV systems, procedure NA below -15°C (5°F) or above 54°C (130°F). For inoperative MALS, increase all Cats visibility to 1 ¼ mile. GPS required.

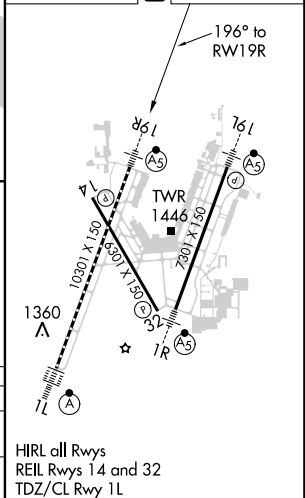


MISSED APPROACH: Climb to 4200 on track 196° to CUTIK and hold.

ATIS <b>125.15</b>	WICHITA APP CON <b>126.7 353.5</b>	WICHITA TOWER <b>118.2 257.8</b>	GND CON <b>121.9 348.6</b>	CLNC DEL <b>125.7</b>
-----------------------	---------------------------------------	-------------------------------------	-------------------------------	--------------------------



ELEV 1333	<b>D</b> TDZE 1330
-----------	--------------------



4200 CUTIK tr 196°

BAYCO 3000 ACUBO 3600

RWY 19R 3000 GP 3.00° TCH 52

5 NM 6.1 NM

CATEGORY	A	B	C	D
RNP 0.30 DA	1727/50 397 (400-1)			

**AUTHORIZATION REQUIRED**

NC-2, 21 JUN 2018 to 19 JUL 2018

NC-2, 21 JUN 2018 to 19 JUL 2018