

APP CRS	Rwy Idg	<b>10301</b>
<b>016°</b>	TDZE	<b>1314</b>
	Apt Elev	<b>1333</b>

# RNAV (RNP) Z RWY 1L

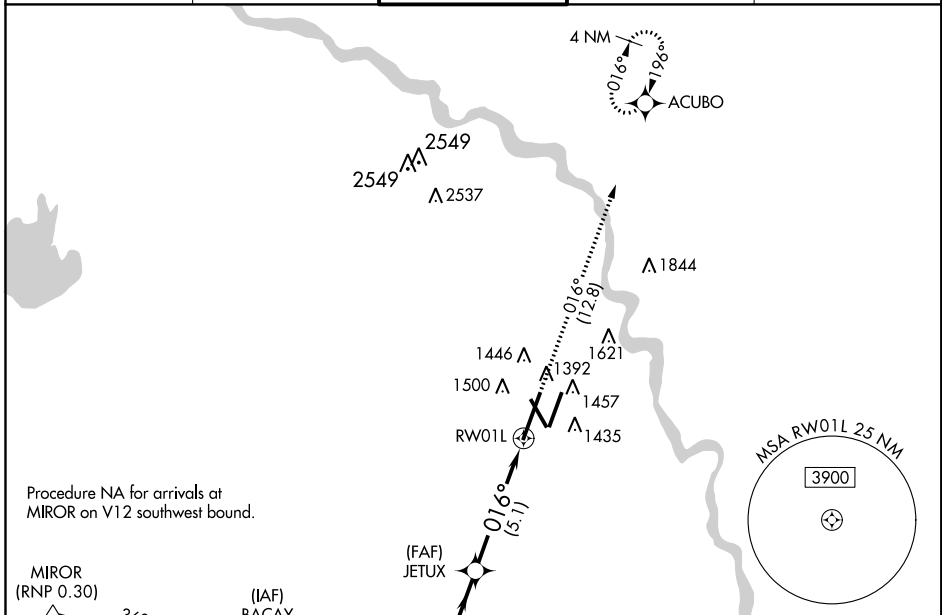
WICHITA DWIGHT D EISENHOWER NATIONAL (ICT)

▼ For uncompensated Baro-VNAV systems, procedure NA below -15°C (5°F) or above 54°C (130°F). For inoperative ALSF, increase RNP 0.15 all Cats visibility to RVR 5000 and RNP 0.30 all Cats visibility to RVR 6000. GPS required. Simultaneous approach authorized with ILS or LOC RWY 1R. Use of FD or AP providing RNAV track guidance required during simultaneous operations.



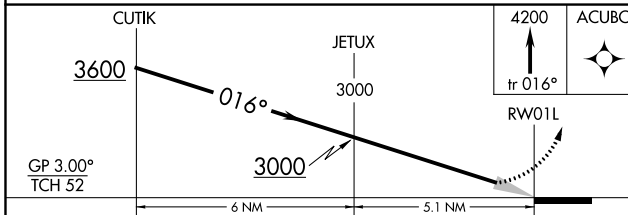
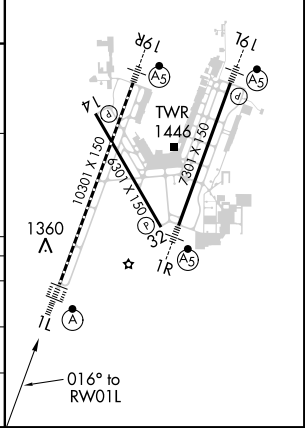
MISSED APPROACH:  
Climb to 4200 on track 016° to ACUBO and hold.

ATIS <b>125.15</b>	WICHITA APP CON <b>126.7 353.5</b>	WICHITA TOWER <b>118.2 257.8</b>	GND CON <b>121.9 348.6</b>	CLNC DEL <b>125.7</b>
-----------------------	---------------------------------------	-------------------------------------	-------------------------------	--------------------------



ELEV 1333	<b>D</b> TDZE 1314
-----------	--------------------

HIRL all Rwys  
REIL Rwys 14 and 32  
TDZ/CL Rwy 1L



CATEGORY	A	B	C	D
RNP 0.15 DA		1626/27	312 (300-¾)	
RNP 0.30 DA		1676/35	362 (400-¾)	

**AUTHORIZATION REQUIRED**

NC-2, 21 JUN 2018 to 19 JUL 2018

NC-2, 21 JUN 2018 to 19 JUL 2018