

LOC I-RXZ 111.3	APP CRS 223°	Rwy ldg TDZE 7500 652	Apt Elev 672
---------------------------	------------------------	---	------------------------

ILS or LOC RWY 22R

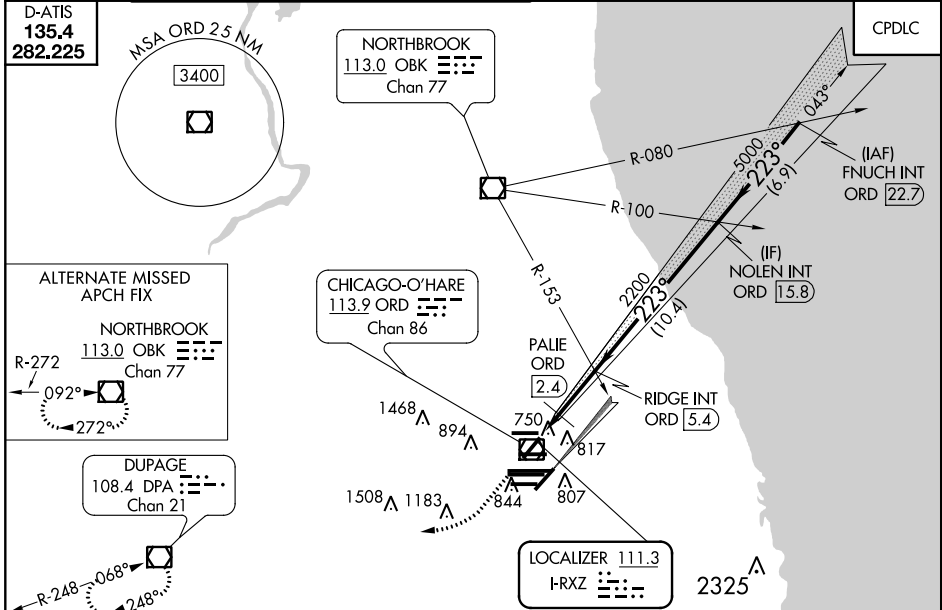
CHICAGO-O'HARE INTL (ORD)

Simultaneous approach authorized with Rwy 22L.
*DME from ORD VOR/DME.

MALS R (AS)

MISSED APPROACH: Climb to 1300 then climbing right turn to 4000 direct DPA VOR/DME and hold.

CHICAGO APP CON 119.0 393.1	O'HARE TOWERS 128.15 348.0 (Rwy 9L/27R) 133.0 348.0 (10R/28L) 120.75 121.15 126.9 348.0 (CENTER)	GND CON (TWR NORTH) 124.125 (TWR SOUTH) 118.05 (ALL TWRs) 226.675	(TWR CENTER) (OBND) 121.75 (IBND) 121.9 134.15	CLNC DEL 121.6
---------------------------------------	--	---	---	--------------------------



ELEV 672 TDZE 652

223° 4.7 NM from FAF

7500 X 150

TWR 914, TWR 910

HIRL all Rwy's TDZ/CL all Rwy's except 4L

FAF to MAP 4.7 NM

Knots	60	90	120	150	180
Min:Sec	4:42	3:08	2:21	1:53	1:34

RADAR REQUIRED

1300 4000 DPA VGSI and ILS glidepath not coincident (VGSI Angle 3.00/TCH 69).

#LOC only

RIDGE INT ORD 5.4

NOLEN INT ORD 15.8

FNUCH INT ORD 22.7

7000

5000

2200

2200

2200

2200

1.7 NM 3 NM 10.4 NM 6.9 NM

CATEGORY	A	B	C	D
S-ILS 22R	852/18 200 (200-½)			
S-LOC 22R	1220/24	568 (600-½)	1220-1¼	568 (600-1¼)
CIRCLING	1220-1	548 (600-1)	1220-1½	1240-2
			548 (600-½)	568 (600-2)
*PALIE FIX MINIMUMS				
S-LOC 22R	980/24	328 (400-½)	980/26	328 (400-¾)
CIRCLING	1220-1	548 (600-1)	1220-1½	1240-2
			548 (600-½)	568 (600-2)

EC-3, 11 OCT 2018 to 08 NOV 2018

EC-3, 11 OCT 2018 to 08 NOV 2018