

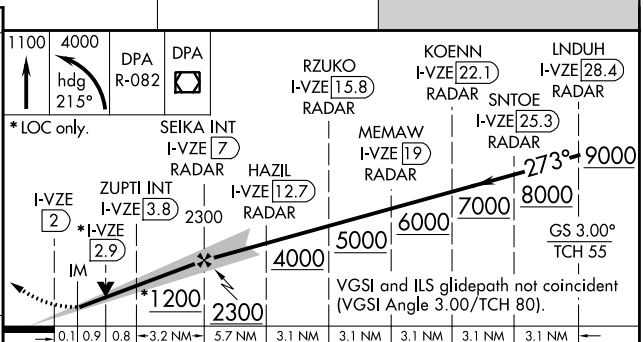
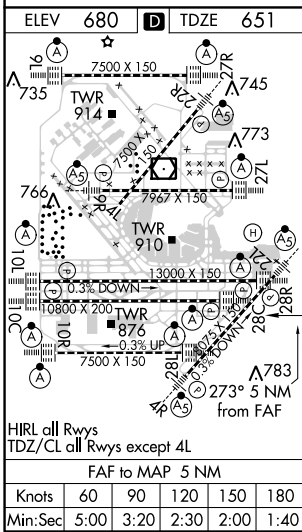
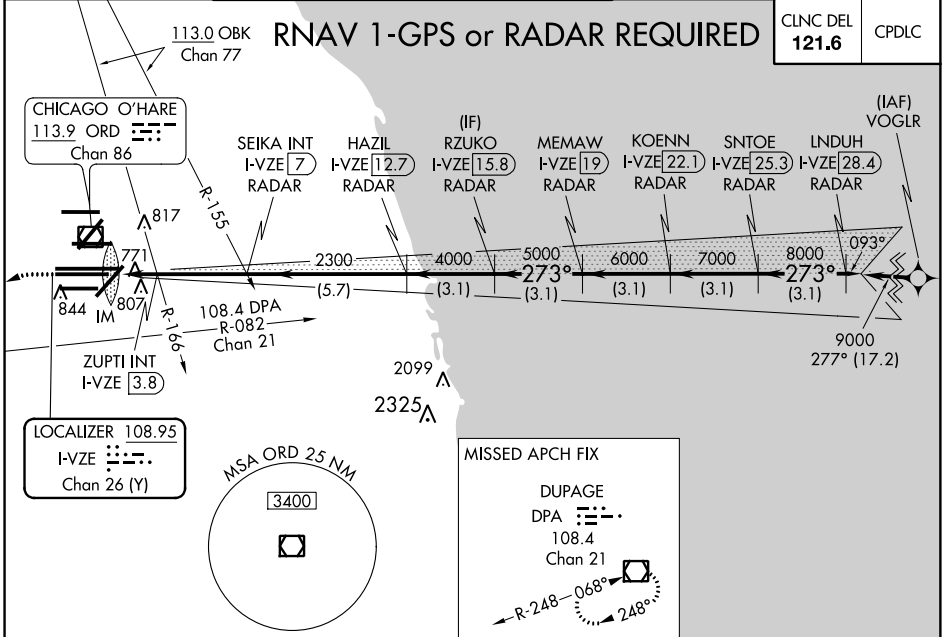
LOC/DME I-VZE 108.95 Chan 26 (Y)	APP CRS 273°	Rwy ldg 10800 TDZE 651 Apt Elev 680
---	------------------------	--

ILS or LOC RWY 28C

CHICAGO O'HARE INTL (ORD)

<p>Simultaneous approach authorized. DME or RADAR required.</p>	<p>ALSIF-2</p>	<p>MISSED APPROACH: Climb to 1100 then climbing left turn to 4000 on heading 215° and DPA VOR/DME R-082 to DPA VOR/DME and hold.</p>

D-ATIS 135.4 282.225	CHICAGO APP CON 119.0 393.1	O'HARE TOWERS 128.15 348.0 (Rwy 9L/27R) 133.0 348.0 (10R/28L) 120.75 121.15 126.9 132.7 348.0 (CENTER)	GND CON (TWR NORTH) 124.125 (TWR SOUTH) 118.05 (ALL TWRs) 226.675	(TWR CENTER) 121.75 (OBND) (TWR SOUTH) 121.9 (IBND) 134.15
--	---------------------------------------	---	---	---



CATEGORY	A	B	C	D
S-ILS 28C	851/18 200 (200-½)			
S-LOC 28C	1200/24	549 (600-½)	1200/60	549 (600-1¼)
ZUPTI FIX MINIMUMS (DUAL VOR RECEIVERS OR DME REQUIRED)				
S-LOC 28C	1040/24	389 (400-½)	1040/35	389 (400-¾)

EC-3, 11 OCT 2018 to 08 NOV 2018

EC-3, 11 OCT 2018 to 08 NOV 2018