

CHICAGO, ILLINOIS

AL-166 (FAA)

18256

ILS PRM RWY 10C (CLOSE PARALLEL)

CHICAGO O'HARE INTL (O.R.D)

LOC/DME I-SXH	APP CRS	Rwy Ldg	10540
108.95	093°	TDZE	669
Chan 26(Y)		Apt Elev	680

ALSF-2

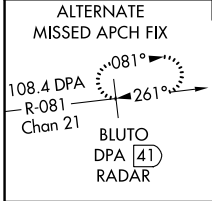
MISSED APPROACH: Climb to 4000 on heading 093° and CGT VORTAC R-336 to CGT VORTAC and hold.

D-ATIS	CHICAGO APP CON
135.4	119.0 393.1
282.225	

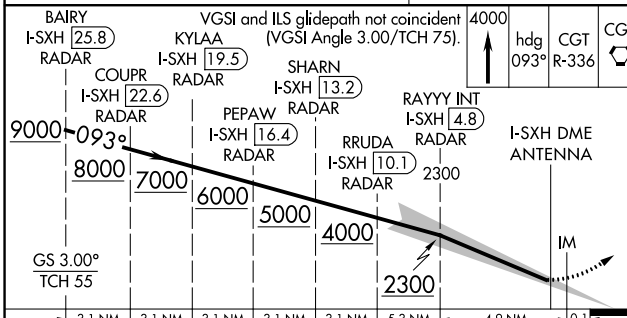
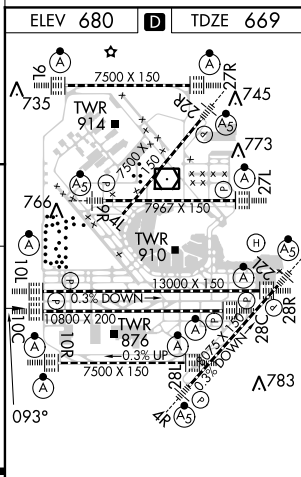
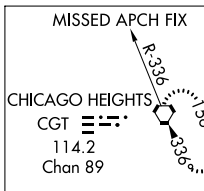
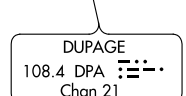
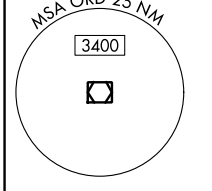
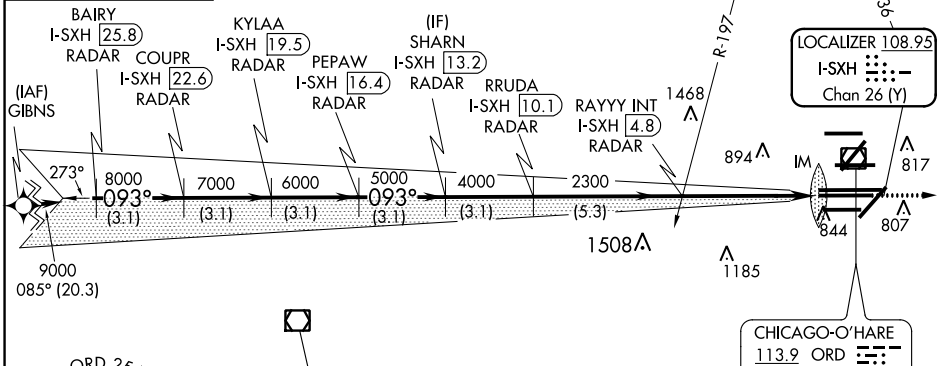
O'HARE TOWERS			
128.15	348.0 (Rwy 9L/27R)	133.0	348.0 (10R/28L)
120.75	121.15	126.9	132.7 348.0 (CENTER)
PRM 119.625			

GND CON (TWR NORTH)	(TWR CENTER)
124.125	121.75 (OBND)
(TWR SOUTH)	121.9 (IBND)
226.675 (ALL TWR)	134.15

CLNC DEL	CPDLC
121.6	



RNAV 1-GPS or RADAR REQUIRED



CATEGORY	A	B	C	D
S-ILS 10C		869/18	200 (200-1/2)	

HIRL all Rwys
 TDZ/CL all Rwys except 4L

CHICAGO, ILLINOIS
 Amdt 1 22JUN17

41°58'N-87°54'W

CHICAGO O'HARE INTL (O.R.D)

ILS PRM RWY 10C (CLOSE PARALLEL)

EC-3, 11 OCT 2018 to 08 NOV 2018

EC-3, 11 OCT 2018 to 08 NOV 2018