


WAAS CH <b>50228</b> <b>W22B</b>	APP CRS <b>225°</b>	Rwy Idg <b>8075</b> TDZE <b>654</b> Apt Elev <b>680</b>
--	------------------------	---

# RNAV (GPS) RWY 22L

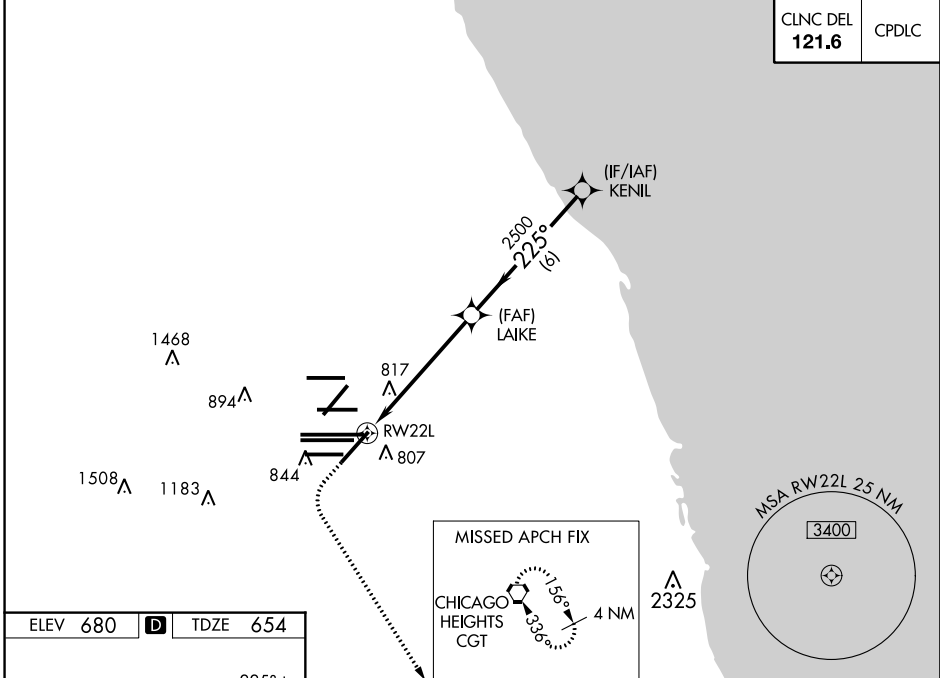
CHICAGO O'HARE INTL (ORD)

**⚠** For uncompensated Baro-VNAV systems, LNAV/VNAV NA below -19°C (-2°F) or above 54°C (130°F). Simultaneous approach authorized with Rwy 22R. DME/DME RNP-0.3 NA. LNAV procedure NA during simultaneous operations. Use of FD or AP providing RNAV track guidance required during simultaneous operations.

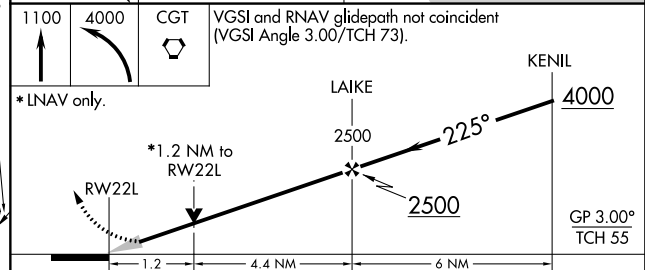
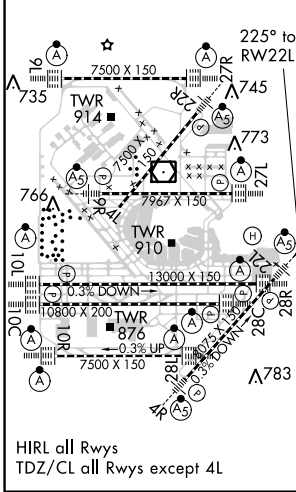
**MALSR**  **MISSED APPROACH:** Climb to 1100 then climbing left turn to 4000 direct CGT VORTAC and hold.

D-ATIS <b>135.4</b> <b>282.225</b>	CHICAGO APP CON <b>119.0 393.1</b>	O'HARE TOWERS <b>128.15 348.0</b> (Rwy 9L/27R) <b>133.0 348.0</b> (10R/28L) <b>120.75 121.15 126.9 132.7 348.0</b> (CENTER)	GND CON (TWR NORTH) <b>124.125</b> (TWR SOUTH) <b>118.05</b> (ALL TWRs) <b>226.675</b>	(TWR CENTER) <b>121.75</b> (OBND) (TWR SOUTH) <b>121.9</b> (BND) <b>134.15</b>
--	---------------------------------------	--	--	--

CNLC DEL <b>121.6</b>	CPDLC
--------------------------	-------



ELEV <b>680</b>	<b>D</b>	TDZE <b>654</b>
-----------------	----------	-----------------



CATEGORY	A	B	C	D
LPV DA		854/18	200 (200-1/2)	
LNAV/VNAV DA		1066/45	412 (400-7/8)	
LNAV MDA	1120/24	466 (500-1/2)	1120/50	466 (500-1)
<b>C</b> CIRCLING	1220-1	540 (600-1)	1220-1 1/2 540 (600-1 1/2)	1460-2 1/2 780 (800-2 1/2)

EC-3, 11 OCT 2018 to 08 NOV 2018

EC-3, 11 OCT 2018 to 08 NOV 2018