

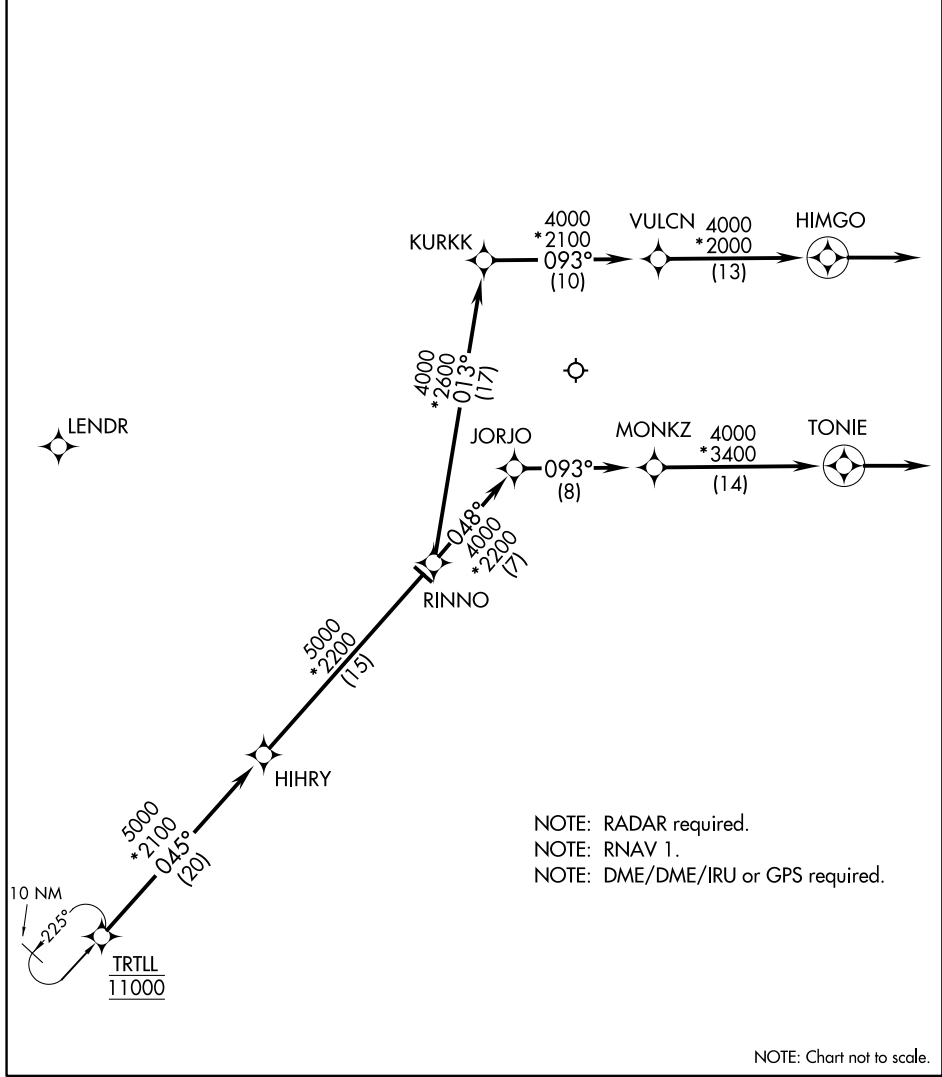
ARRIVAL ROUTE DESCRIPTION

From TRTLL on track 045° to HIIHRY, then on track 045° to RINNO.

LANDING RWY 27R: From RINNO on track 013° to KURKK, then on track 093° to VULCN, then on track 093° to HIMGO, then on track 093°. Expect RADAR vectors to final approach course.

LANDING RWYS 4L/R, 9L/R, 10L/C/R, 15, 22L/R, 27L, 28L/C/R: From RINNO on track 048° to JORJO, then on track 093° to MONKZ, then on track 093° to TONIE, then on track 093°. Expect RADAR vectors to final approach course.

CHICAGO APP CON  
119.0 393.1  
D-ATIS  
135.4 282.225



EC-3, 11 OCT 2018 to 08 NOV 2018

EC-3, 11 OCT 2018 to 08 NOV 2018

NOTE: Chart not to scale.