

LOC/DME I-ROW <b>109.9</b> Chan <b>36</b>	APP CRS <b>215°</b>	Rwy Idg <b>13001</b> TDZE <b>3633</b> Apt Elev <b>3671</b>
---	------------------------	--

# ILS or LOC RWY 21

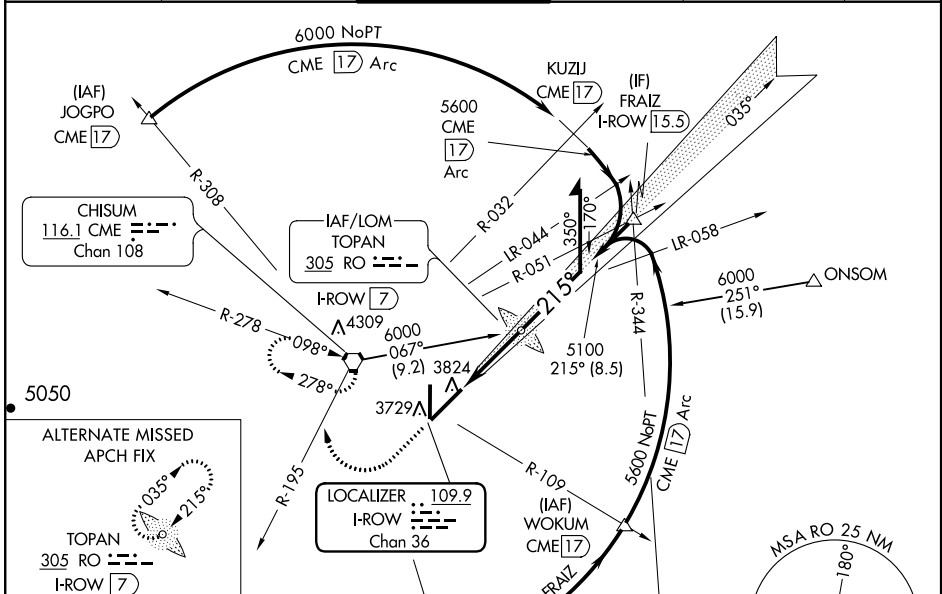
ROSWELL INTL AIR CENTER (ROW)

**NA** When local altimeter setting not received, use Artesia altimeter setting and increase all DA 84 feet and all MDA 100 feet; increase LOC Cats C and D visibility  $\frac{3}{8}$  mile. For inoperative MALSRR when using Artesia altimeter setting, increase ILS all Cats visibility to 1 and LOC Cats C and D to  $\frac{1}{8}$ . VDP NA when using Artesia altimeter setting.

**MALSRR**  
**A5**

**MISSED APPROACH:** Climb to 5000 then climbing right turn to 6000 on CME VORTAC R-195 to CME VORTAC and hold.

ATIS <b>128.45 306.2</b>	ROSWELL APP CON* <b>119.6 239.0</b>	ROSWELL TOWER* <b>118.5 (CTAF) 0 233.7</b>	GND CON <b>121.9 348.6</b>	CLNC DEL <b>132.875 282.25</b>	UNICOM <b>122.95</b>
-----------------------------	--	---	-------------------------------	-----------------------------------	-------------------------



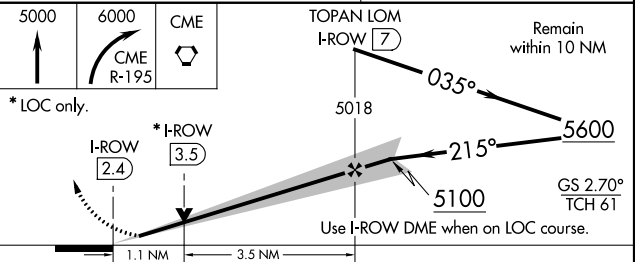
SW-1, 08 NOV 2018 to 06 DEC 2018

SW-1, 08 NOV 2018 to 06 DEC 2018

ELEV 3671	<b>D</b>	TDZE 3633
-----------	----------	-----------

3753  $\Delta$  ZL  
3822  $\Delta$   
TWR 3786  
MIRL Rwy 3-21  
MIRL Rwy 17-35

## ADF or DME REQUIRED



3753 $\Delta$ ZL	215° 4.6 NM from FAF
3822 $\Delta$	
TWR 3786	
MIRL Rwy 3-21	
MIRL Rwy 17-35	
FAF to MAP 4.6 NM	
Knots	60 90 120 150 180
Min:Sec	4:36 3:04 2:18 1:50 1:32

CATEGORY	A	B	C	D
S-ILS 21	3833- $\frac{1}{2}$ 200 (200- $\frac{1}{2}$ )			
S-LOC 21	4020- $\frac{1}{2}$	387 (400- $\frac{1}{2}$ )	4020- $\frac{5}{8}$	387 (400- $\frac{5}{8}$ )
CIRCLING	4140-1	469 (500-1)	4140- $\frac{1}{2}$	4240-2 569 (600-2)