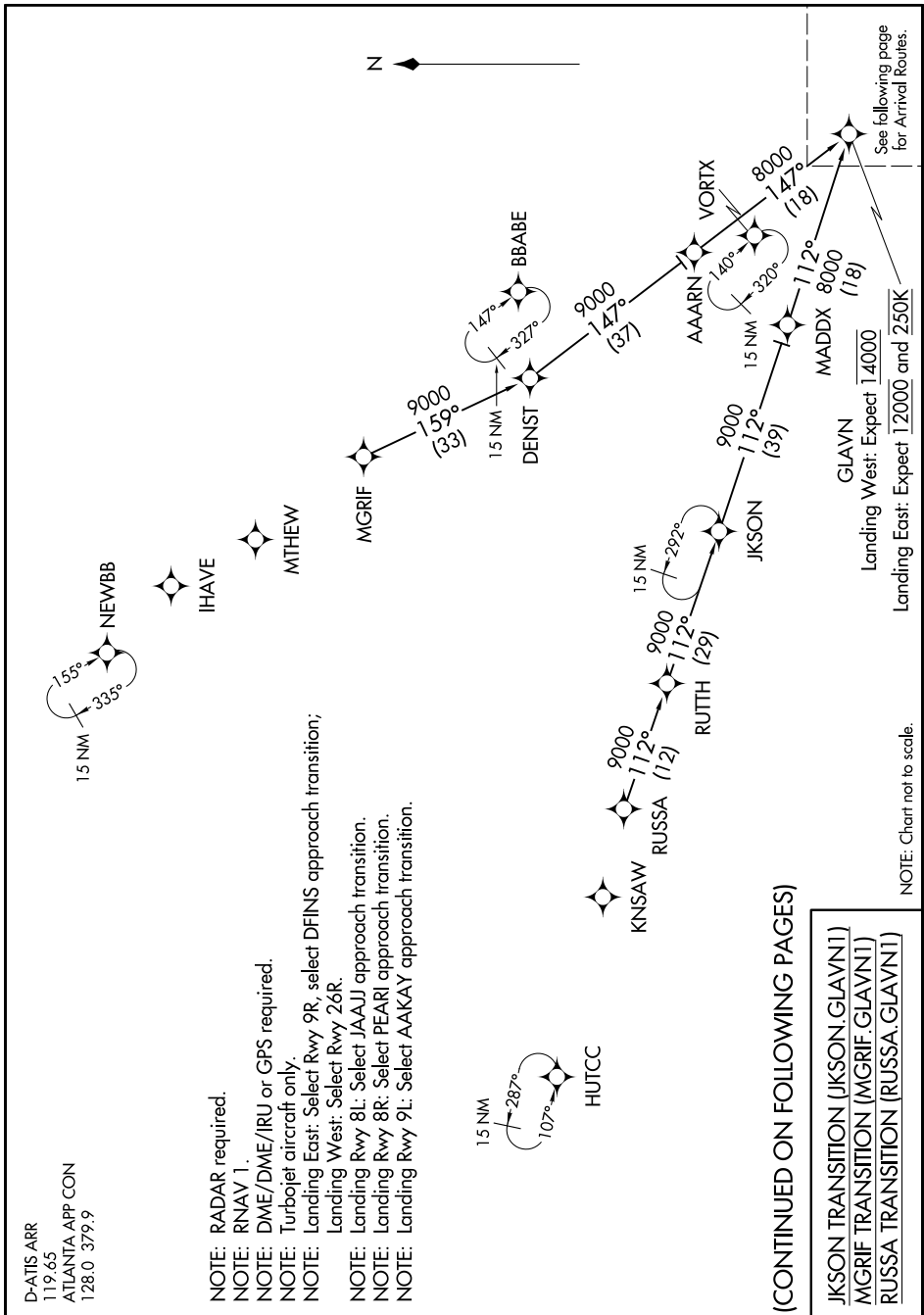


GLAVN ONE ARRIVAL (RNAV) Transition Routes

ATLANTA, GEORGIA

SE-4, 06 DEC 2018 to 03 JAN 2019



- NOTE: RADAR required.
- NOTE: RNAV 1.
- NOTE: DME/DME/IRU or GPS required.
- NOTE: Turbojet aircraft only.
- NOTE: Landing East: Select Rwy 9R, select DFINS approach transition;
- NOTE: Landing West: Select Rwy 26R.
- NOTE: Landing Rwy 8L: Select JAAJJ approach transition.
- NOTE: Landing Rwy 8R: Select PEARL approach transition.
- NOTE: Landing Rwy 9L: Select AAKAY approach transition.

(CONTINUED ON FOLLOWING PAGES)

- JKSON TRANSITION (JKSON.GLAVN1)
- MGRIF TRANSITION (MGRIF.GLAVN1)
- RUSSA TRANSITION (RUSSA.GLAVN1)

NOTE: Chart not to scale.

SE-4, 06 DEC 2018 to 03 JAN 2019