

LOC/DME I-GXZ 110.1 Chan 38	APP CRS 275°	Rwy ldg TDZE Apt Elev	8800 990 1026
---	------------------------	-----------------------------	--

ILS RWY 26R (SA CAT I & II)

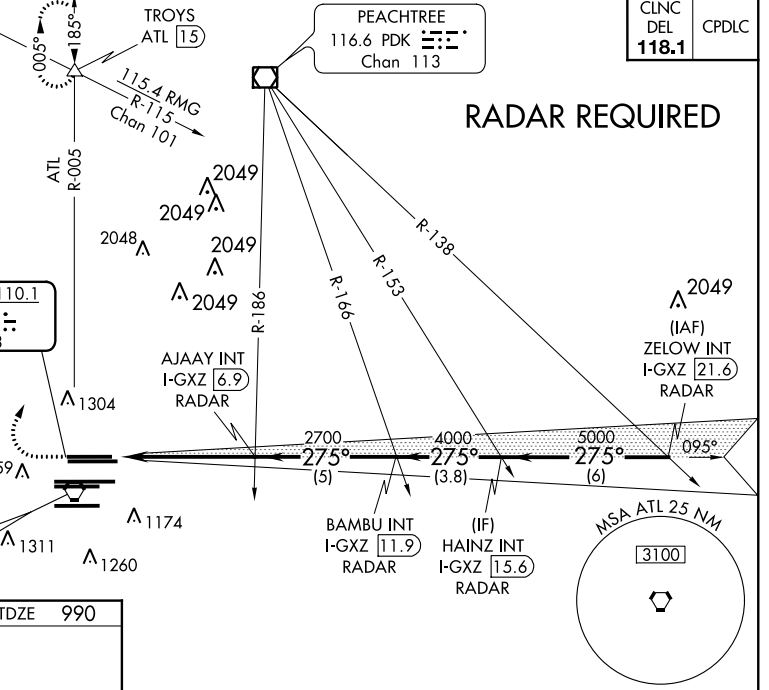
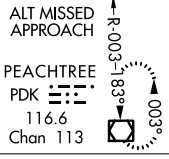
HARTSFIELD-JACKSON ATLANTA INTL (ATL)

▼ SA CAT I: Requires specific OPSPEC, MSPEC, or LOA approval and use of HUD to DH.
SA CAT II: Reduced lighting: Requires specific OPSPEC, MSPEC, or LOA approval and use of autoland or HUD to touchdown.
Simultaneous approach authorized with Rwy 27R or 27L or 28, or Rwy 27R and 28.



MISSED APPROACH: Climb to 1400 then climbing right turn to 3500 on ATL VORTAC R-005 to TROYS INT/ATL 15 DME and hold.

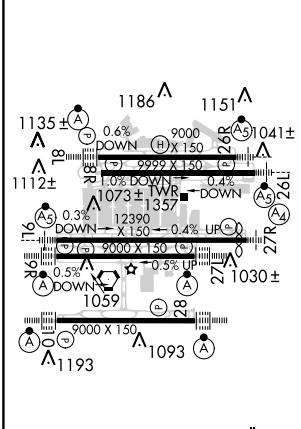
D-ATIS ARR 119.65 DEP 125.55	ATLANTA APP CON 127.9 379.9	ATLANTA TOWER 8L-26R 8R-26L 9L-27R 9R-27L 10-28 RWYS				ALL RWYS (8L-26R,8R-26L) (9L-27R,9R-27L) 10-28 RWYS	GND CON ALL RWYS				
		119.1	125.325	123.85	119.3	119.5	254.4	121.9	121.75	121.65	254.4



SE-4, 06 DEC 2018 to 03 JAN 2019

SE-4, 06 DEC 2018 to 03 JAN 2019

ELEV 1026	D	TDZE 990
-----------	----------	----------



1400	3500	TROYS	VGSI and ILS glidepath not coincident (VGSI Angle 3.00/TCH 69).			
↑	↘	△	AJAAY INT I-GXZ [6.9] RADAR	BAMBU INT I-GXZ [11.9] RADAR	HAINZ INT I-GXZ [15.6] RADAR	ZELOW INT I-GXZ [21.6] RADAR
			2700	4000	5000	5000
			2700	4000	5000	GS 3.00° TCH 55
			5.2 NM	5 NM	3.8 NM	6 NM
CATEGORY	A	B	C	D		
S-ILS 26R		SA CAT I RA 170/14	150 DA 1140			
S-ILS 26R		SA CAT II RA 110/12	100 DA 1090			

SA CATEGORY I & II ILS - SPECIAL AIRCREW & AIRCRAFT CERTIFICATION REQUIRED