

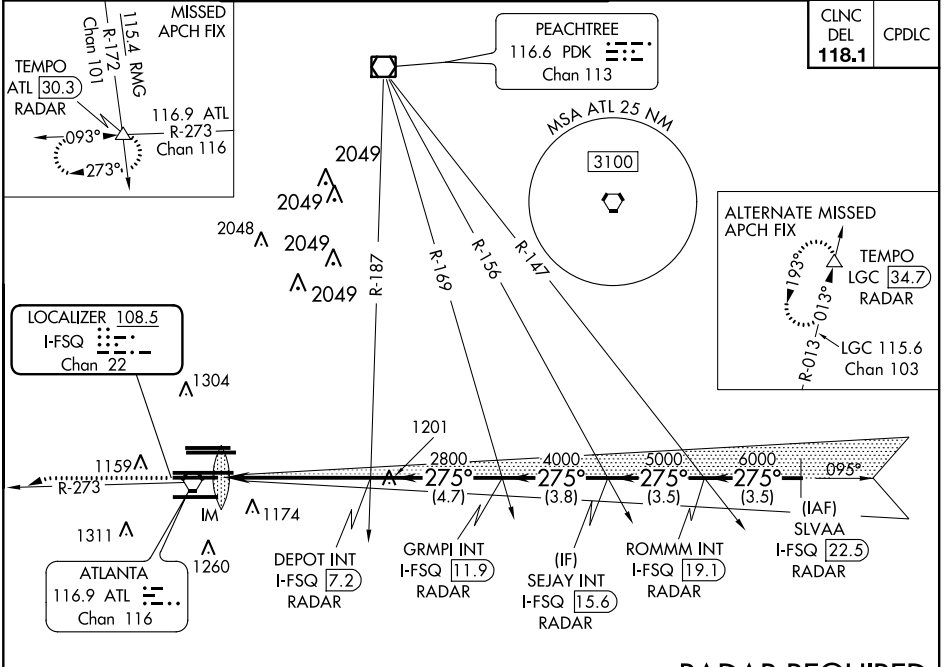
LOC/DME I-FSQ <b>108.5</b> Chan <b>22</b>	APP CRS <b>275°</b>	Rwy Idg <b>8865</b> TDZE <b>999</b> Apt Elev <b>1026</b>
---	------------------------	---

# ILS RWY 27L (CAT II)

HARTSFIELD-JACKSON ATLANTA INTL (ATL)

Simultaneous approach authorized with Rwy 26L or 26R.		ALSF-2 	MISSED APPROACH: Climb to 1400 then climbing left turn to 4000 on ATL VORTAC R-273 to TEMPO INT/ATL 30.3 DME/RADAR and hold.
---	--	------------	--

D-ATIS ARR <b>119.65</b>	ATLANTA APP CON DEP <b>125.55</b>	ATLANTA TOWER 8L-26R 8R-26L 9L-27R 9R-27L 10-28 RWYS <b>119.1 125.325 123.85 119.3 119.5 254.4</b>	ALL <b>121.9</b>	GND CON (8L-26R,8R-26L) (9L-27R,9R-27L) 10-28 RWYS <b>121.75 121.65 254.4</b>	ALL RWYS <b>254.4</b>
-----------------------------	---	--	---------------------	---	-----------------------------

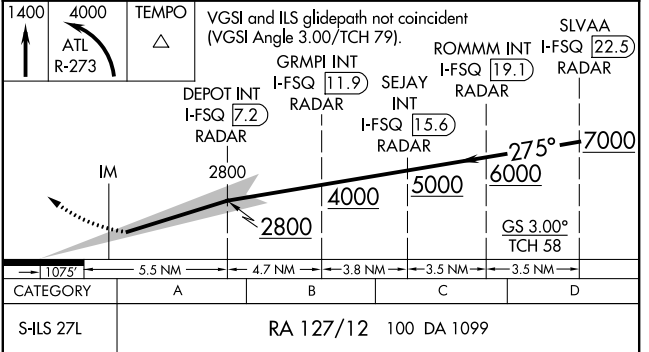
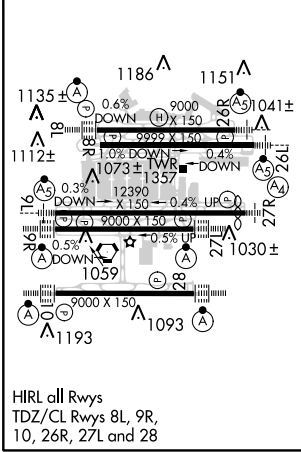


SE-4, 06 DEC 2018 to 03 JAN 2019

SE-4, 06 DEC 2018 to 03 JAN 2019

ELEV 1026	<b>D</b>	TDZE 999
-----------	----------	----------

## RADAR REQUIRED



CATEGORY	A	B	C	D
S-ILS 27L	RA 127/12 100 DA 1099			

## CATEGORY II ILS- SPECIAL AIRCREW & AIRCRAFT CERTIFICATION REQUIRED