

LOC/DME I-PKU <b>111.75</b> Chan <b>54 (Y)</b>	APP CRS <b>275°</b>	Rwy Idg TDZE Apt Elev	<b>9000</b> <b>998</b> <b>1026</b>
--	------------------------	-----------------------------	--

**ILS RWY 28 (CAT II)**  
HARTSFIELD-JACKSON ATLANTA INTL (ATL)

Simultaneous approach authorized with Rwy 26R or 26L or 27R, or Rwy 26R and 27R. DME or Radar Required.

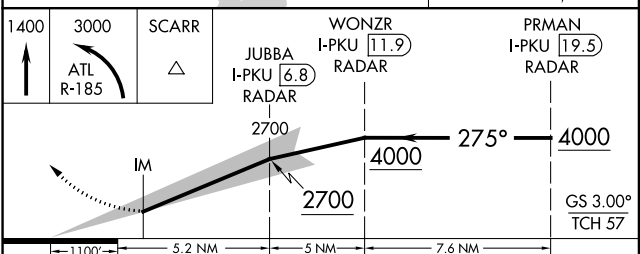
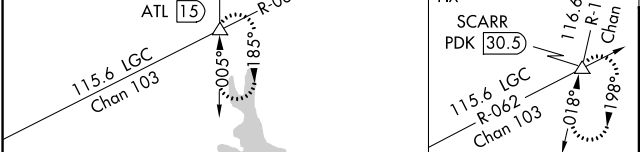
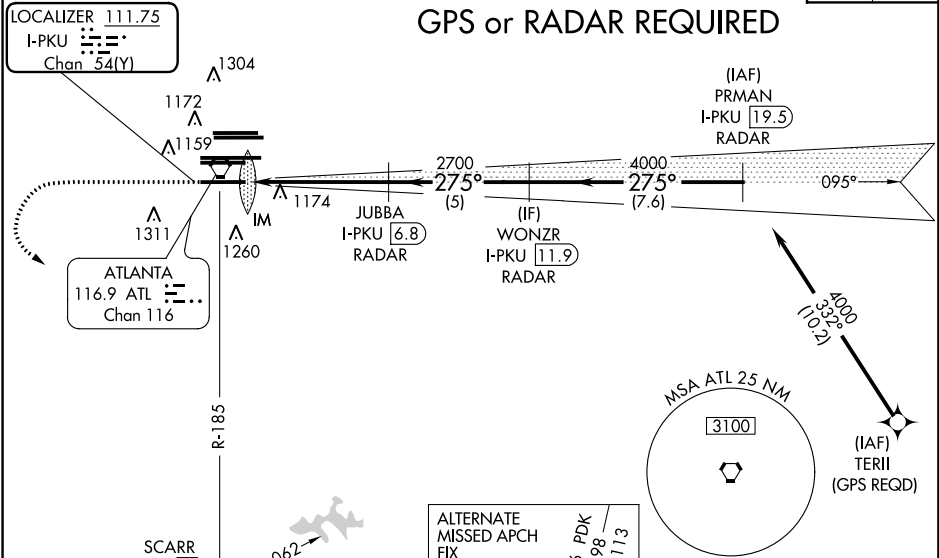


MISSED APPROACH: Climb to 1400 then climbing left turn to 3000 on ATL VORTAC R-185 to SCARR INT/ ATL 15 DME and hold.

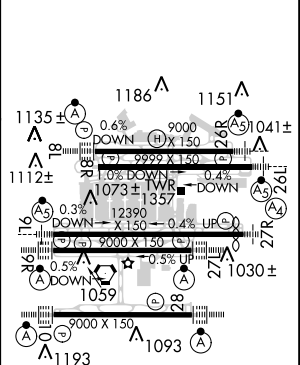
D-ATIS ARR <b>119.65</b>	ATLANTA APP CON 127.9 379.9	ATLANTA TOWER 8L-26R 8R-26L 9L-27R 9R-27L 10-28 RWYS				ALL RWYS <b>121.9</b>	GND CON <b>121.75</b>	ALL RWYS <b>121.65 254.4</b>
DEP <b>125.55</b>	<b>127.9 379.9</b>	<b>119.1 125.325 123.85 119.3 119.5 254.4</b>						

CLNC DEL <b>118.1</b>	CPDLC
-----------------------------	-------

**GPS or RADAR REQUIRED**



ELEV 1026	<b>D</b>	TDZE 998
-----------	----------	----------



CATEGORY	A	B	C	D
S-ILS 28	RA 188/12		100 DA 1098	

**CATEGORY II ILS - SPECIAL AIRCREW & AIRCRAFT CERTIFICATION REQUIRED**

HIRL all Rwys  
TDZ/CL Rwys 8L, 9R,  
10, 26R, 27L and 28

SE-4, 06 DEC 2018 to 03 JAN 2019

SE-4, 06 DEC 2018 to 03 JAN 2019