

LOC/DME I-HFW 109.3 Chan 30	APP CRS 095°	Rwy Idg TDZE Apt Elev	8800 1015 1026
---	------------------------	-----------------------------	---

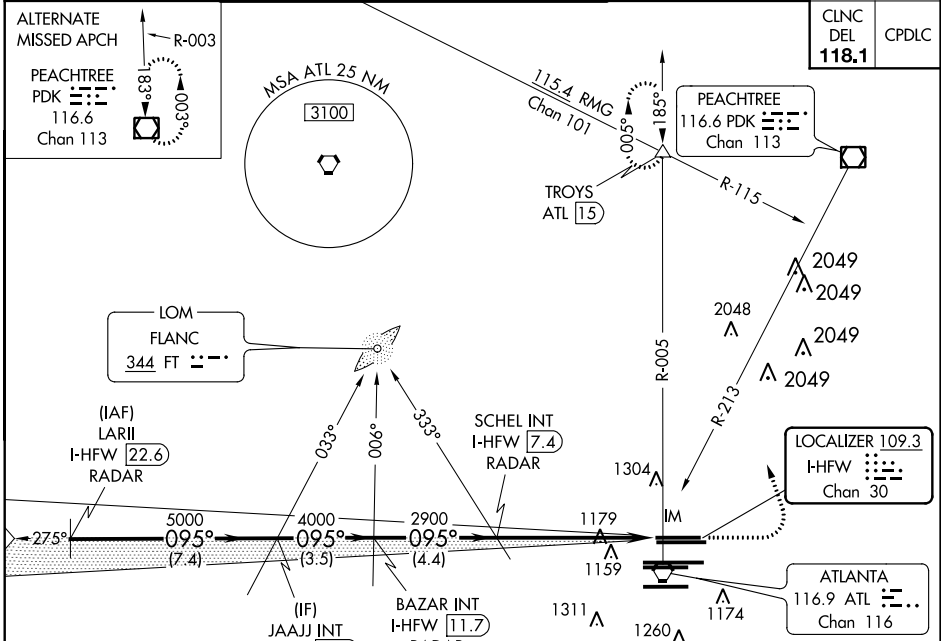
ILS RWY 8L (CAT II & III)

HARTSFIELD-JACKSON ATLANTA INTL (ATL)

Simultaneous approach authorized with Rwy 9L or 9R or 10, or Rwys 9L and 10. ADF or DME or RADAR required.

ALSF-2
MISSED APPROACH: Climb to 1500 then climbing left turn to 3500 on ATL VORTAC R-005 INT/ATL 1.5 DME and hold.

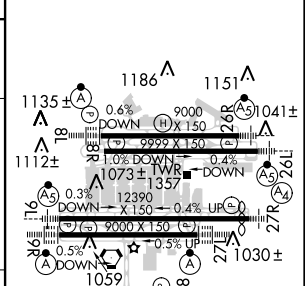
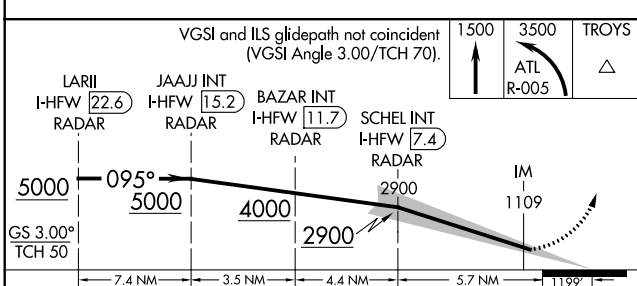
D-ATIS ARR 119.65	ATLANTA APP CON DEP 127.9 379.9	ATLANTA TOWER 8L-26R 8R-26L 9L-27R 9R-27L 10-28 RWYS 119.1 125.325 123.85 119.3 119.5 254.4	ALL RWYS 121.9 121.75 121.65 254.4	GND CON 8L-26R,8R-26L 9L-27R,9R-27L 10-28 RWYS 121.9 121.75 121.65 254.4
-----------------------------	--	--	---	---



SE-4, 06 DEC 2018 to 03 JAN 2019

SE-4, 06 DEC 2018 to 03 JAN 2019

ELEV 1026	TDZE 1015
-----------	-----------



CATEGORY	A	B	C	D
S-ILS 8L		CAT II	RA 105/12 100 DA 1115	
S-ILS 8L		CAT IIIa	RVR 07	
S-ILS 8L		CAT IIIb	RVR 06	
S-ILS 8L		CAT IIIc	NA	

CATEGORY II & III ILS - SPECIAL AIRCREW & AIRCRAFT CERTIFICATION REQUIRED

HIRL all Rwys
TDZ/CL Rwys 8L, 9R, 10, 26R, 27L and 28