

LOC/DME I-FUN <b>108.9</b> Chan <b>26</b>	APP CRS <b>095°</b>	Rwy Idg <b>9R 9L</b> TDZE <b>8925 11730</b> Apt Elev <b>1026 1019</b>
---	------------------------	--

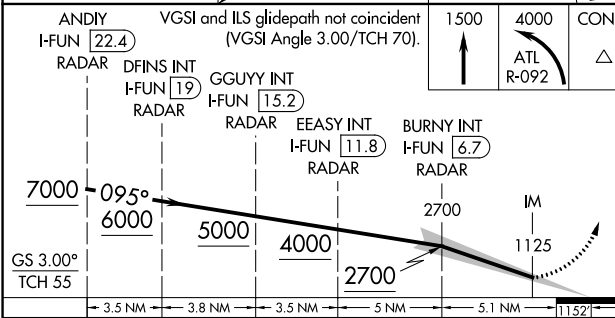
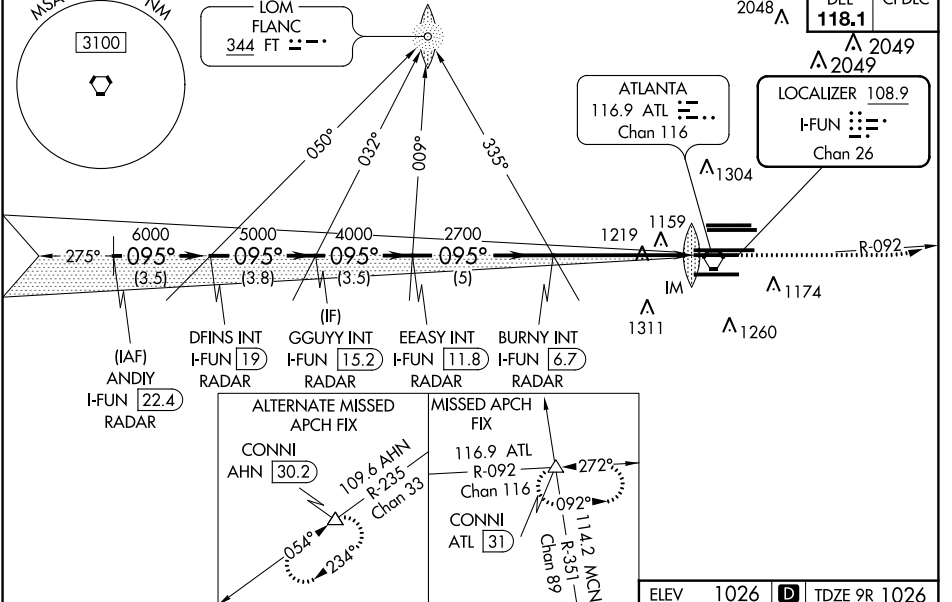
**ILS RWY 9R (CAT II & III)**  
HARTSFIELD-JACKSON ATLANTA INTL (ATL)

**▼** Inop table does not apply to Sidestep 9L for Cats A and B. ADF or DME or RADAR required.  
Simultaneous approach authorized with Rwy 8L or 8R.

Rwy 9R ALSF-2 Rwy 9L MALS   
MISSED APPROACH: Climb to 1500 then climbing left turn to 4000 on ATL VORTAC R-092 to CONNI INT/ATL 31 DME and hold.

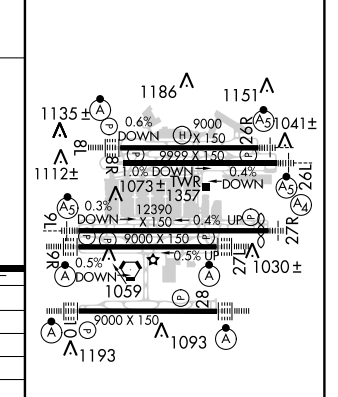
D-ATIS ARR <b>119.65</b>	ATLANTA APP CON <b>127.9 379.9</b>	ATLANTA TOWER 8L-26R 8R-26L 9L-27R 9R-27L 10-28 RWYS <b>119.1 125.325 123.85 119.3 119.5 254.4</b>	ALL <b>121.9</b>	GND CON 8L-26R,8R-26L 9L-27R,9R-27L 10-28 RWYS <b>121.75 121.65 254.4</b>	ALL RWYS
-----------------------------	--	--	---------------------	---	-------------

**RADAR REQUIRED**



ELEV 1026	TDZE 9R 1026	TDZE 9L 1019
-----------	--------------	--------------

CATEGORY	A	B	C	D
S-ILS 9R	CAT II RA 118/12		100 DA 1126	
S-ILS 9R	CAT IIIa		RVR 07	
S-ILS 9R	CAT IIIb		RVR 03	
S-ILS 9R	CAT IIIc		NA	



**CATEGORY II & III ILS - SPECIAL AIRCREW & AIRCRAFT CERTIFICATION REQUIRED**

HIRL all Rwys  
TDZ/CL Rwys 8L, 9R, 10, 26R, 27L and 28

SE-4, 06 DEC 2018 to 03 JAN 2019

SE-4, 06 DEC 2018 to 03 JAN 2019