

LOC/DME I-OMO <b>111.55</b> Chan <b>52 (Y)</b>	APP CRS <b>095°</b>	Rwy Ldg <b>9000</b> TDZE <b>1000</b> Apt Elev <b>1026</b>
--	------------------------	--

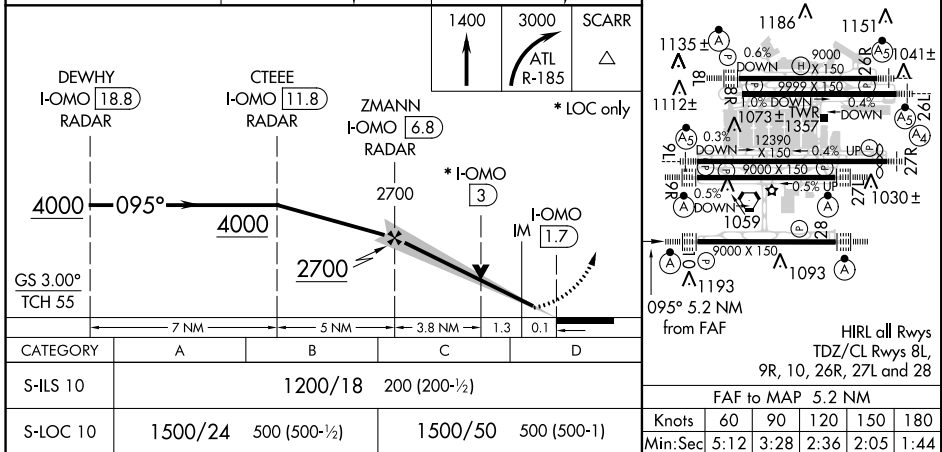
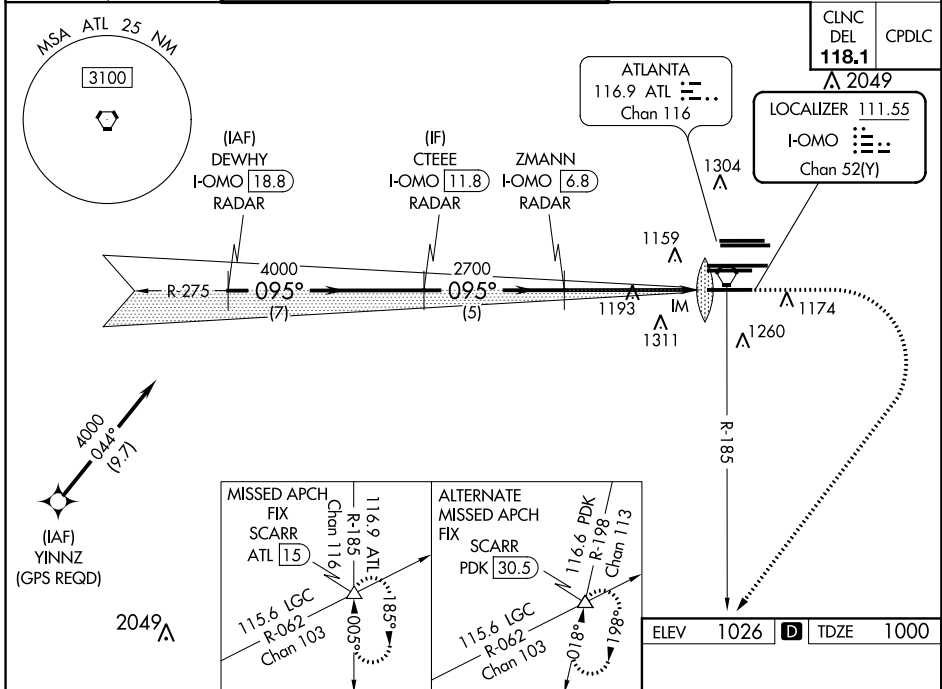
# I LS or LOC RWY 10

HARTSFIELD-JACKSON ATLANTA INTL (ATL)

▼ For inop ALSF-2, increase S-LOC Cats C/D visibility to 1%.  
 Simultaneous approach authorized with Rwy 9L or 8R or 8L, or Rwys 9L and 8L.  
 DME or Radar required.  
 Localizer not suitable for electronic rollout guidance.

ALSF-2 MISSED APPROACH: Climb to 1400 then climbing right turn to 3000 on ATL VORTAC R-185 to SCARR INT/ATL 15 DME and hold.

D-ATIS ARR <b>119.65</b>	ATLANTA APP CON <b>127.9 379.9</b>	ATLANTA TOWER 8L-26R 8R-26L 9L-27R 9R-27L 10-28 RWYS <b>119.1 125.325 123.85 119.3 119.5 254.4</b>	ALL RWYS <b>121.9</b>	GND CON 8L-26R,8R-26L (9L-27R,9R-27L) 10-28 RWYS <b>121.75</b>	ALL RWYS <b>121.65 254.4</b>
-----------------------------	--	--	-----------------------------	--	------------------------------------



SE-4, 06 DEC 2018 to 03 JAN 2019

SE-4, 06 DEC 2018 to 03 JAN 2019