

LOC/DME I-GXZ <b>110.1</b> Chan <b>38</b>	APP CRS <b>275°</b>	Rwy Idg TDZE Apt Elev	26R <b>8800</b>	26L <b>9999</b>
			<b>990</b>	<b>996</b>
			<b>1026</b>	<b>1026</b>

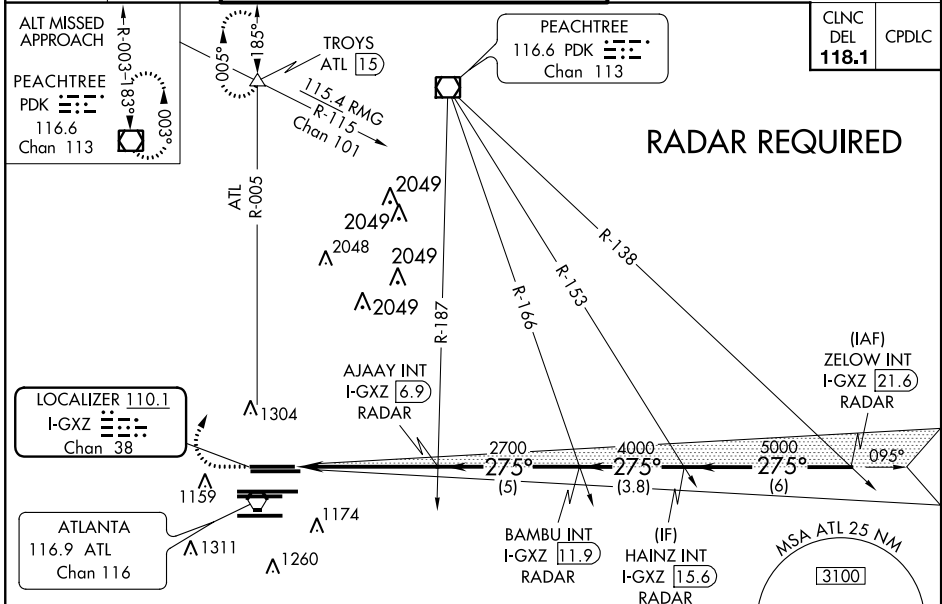
# ILS or LOC RWY 26R

HARTSFIELD-JACKSON ATLANTA INTL (ATL)

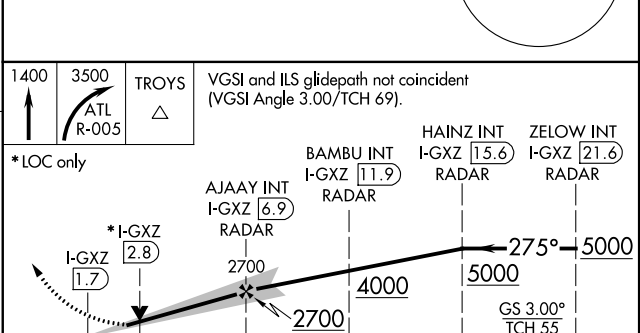
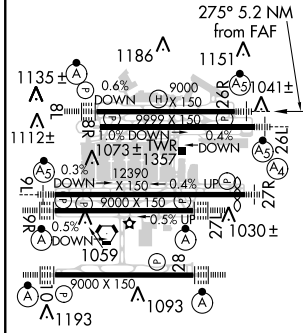
**▼** Inop table does not apply to sidestep Rwy 26L. Simultaneous approach authorized with Rwys 27R or 27L or 28, or Rwys 27R and 28.

Rwy 26R MALSR	Rwy 26L MALSR	MISSED APPROACH: Climb to 1400 then climbing right turn to 3500 on ATL VORTAC R-005 to TROYS INT/ ATL 15 DME and hold.
------------------	------------------	--

D-ATIS ARR <b>119.65</b> DEP <b>125.55</b>	ATLANTA APP CON <b>127.9 379.9</b>	ATLANTA TOWER 8L-26R 8R-26L 9L-27R 9R-27L 10-28 RWYS <b>119.1 125.325 123.85 119.3 119.5 254.4</b>	ALL RWYS <b>121.9</b>	GND CON (8L-26R,8R-26L) (9L-27R,9R-27L) 10-28 RWYS <b>121.75 121.65 254.4</b>
--	--	--	-----------------------------	---



ELEV 1026	<b>D</b>	TDZE 26R 990 TDZE 26L 996
-----------	----------	------------------------------



HIRL all Rwys TDZ/CL Rwys 8L, 9R, 10, 26R, 27L and 28				
FAF to MAP 5.2 NM				
Knots	60	90	120	150
Min:Sec	5:12	3:28	2:36	2:05
				1:44
CATEGORY	A	B	C	D
S-ILS 26R		1190/18	200 (200-½)	
S-LOC 26R	1420/24	430 (400-½)	1420/40	430 (400-¾)
SIDESTEP 26L	1420/1¼	424 (400-1¼)	1420-1¾	424 (400-1¾)

SE-4, 06 DEC 2018 to 03 JAN 2019

SE-4, 06 DEC 2018 to 03 JAN 2019