

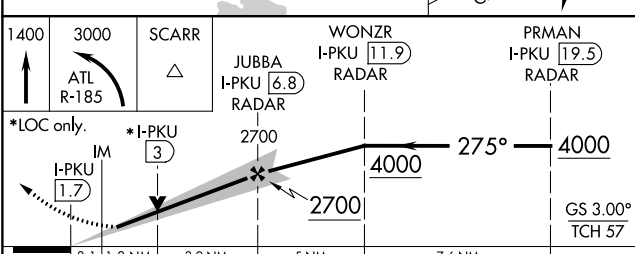
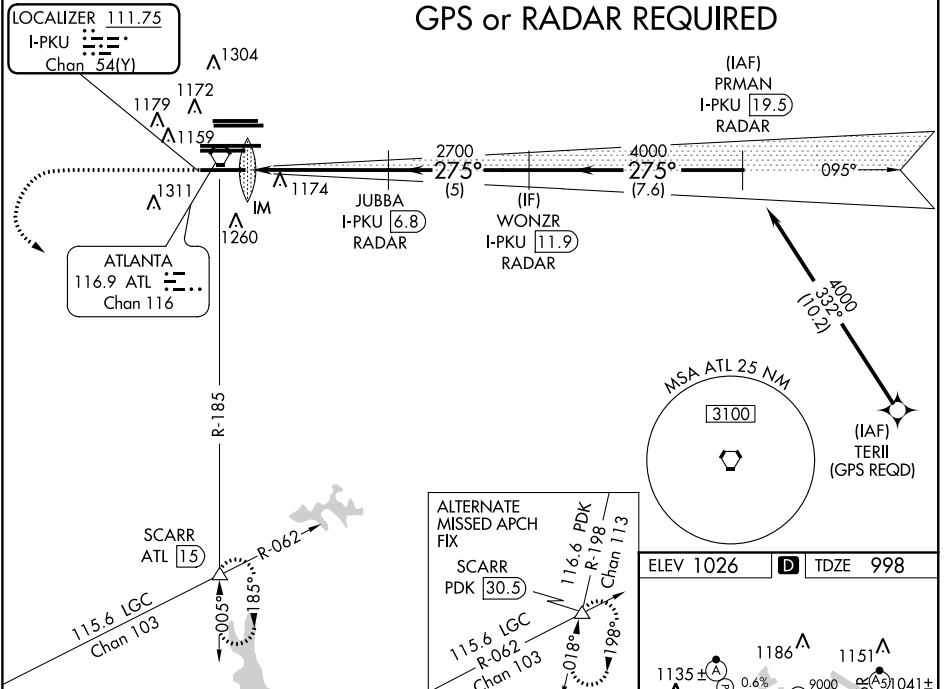
LOC/DME I-PKU 111.75 Chan 54 (Y)	APP CRS 275°	Rwy Idg TDZE Apt Elev 9000 998 1026
------------------------------------------------------	------------------------	-------------------------------------------------------------------------

ILS or LOC RWY 28
HARTSFIELD-JACKSON ATLANTA INTL (ATL)

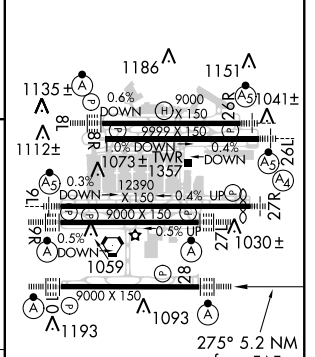
Simultaneous approach authorized with Rwy 26R or 26L or 27R, or Rwys 26R and 27R. DME or Radar Required.		ALSF-2 	MISSED APPROACH: Climb to 1400 then climbing left turn to 3000 on ATL VORTAC R-185 to SCARR INT/ ATL 15 DME and hold.
D-ATIS ARR 119.65	ATLANTA APP CON 127.9 379.9	ATLANTA TOWER 8L-26R 8R-26L 9L-27R 9R-27L 10-28 RWYS 119.1 125.325 123.85 119.3 119.5 254.4	ALL RWYS (8L-26R,8R-26L) (9L-27R,9R-27L) 10-28 RWYS 121.9 121.75 121.65 254.4
DEP 125.55			GND CON 121.65 254.4

CLNC DEL 118.1	CPDLC
-----------------------------	-------

GPS or RADAR REQUIRED



ELEV 1026	D	TDZE 998
-----------	----------	----------



CATEGORY	A	B	C	D
S-ILS 28	1198/18		200 (200-1/2)	
S-LOC 28	1480/24	482 (500-1/2)	1480/50	482 (500-1)

HIRL all Rwys				
TDZ/CL Rwys 8L, 9R, 10, 26R, 27L and 28				
FAF to MAP 5.2 NM				
Knots	60	90	120	150 180
Min:Sec	5:12	3:28	2:36	2:05 1:44

SE-4, 06 DEC 2018 to 03 JAN 2019

SE-4, 06 DEC 2018 to 03 JAN 2019