

LOC/DME I-HFW <b>109.3</b> Chan <b>30</b>	APP CRS <b>095°</b>	Rwy Idg 8L <b>8800</b> 8R <b>9999</b> TDZE <b>1015</b> 1024 Apt Elev <b>1026</b> <b>1026</b>
---	------------------------	---

# ILS or LOC RWY 8L

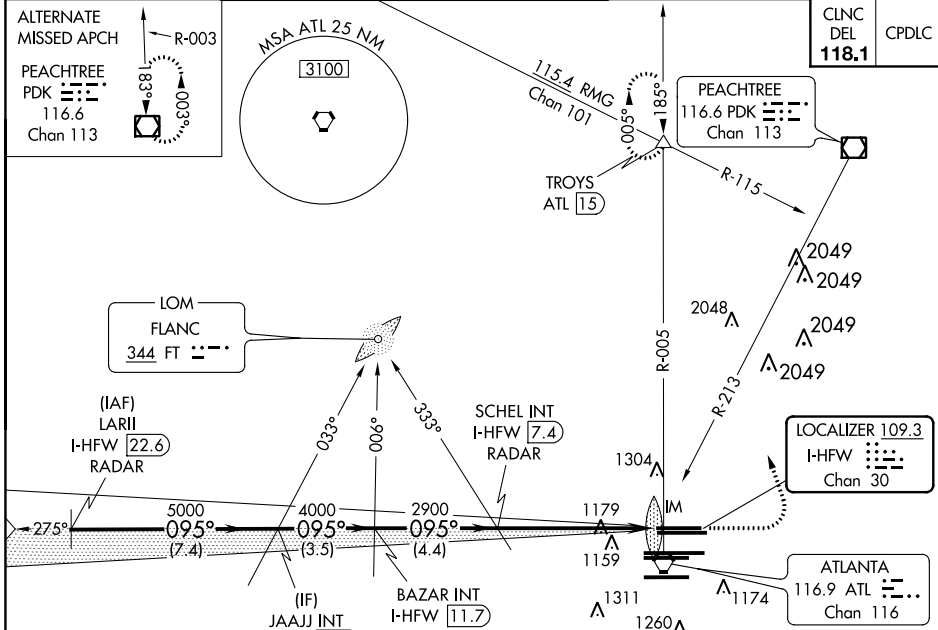
HARTSFIELD-JACKSON ATLANTA INTL (ATL)

**▼** Inop table does not apply to Sidestep 8R.  
Simultaneous approach authorized with Rwy 9L or 9R or 10, or Rwys 9L and 10. ADF or DME or RADAR required.

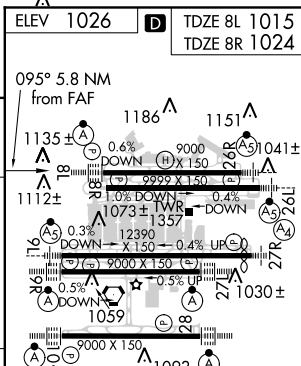
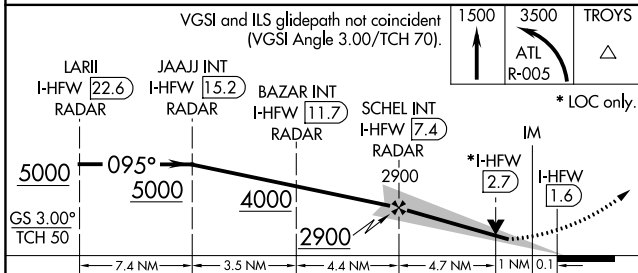


**MISSED APPROACH:** Climb to 1500 then climbing left turn to 3500 on ATL VORTAC R-005 to TROYS INT/ATL 15 DME and hold.

D-ATIS ARR <b>119.65</b>	ATLANTA APP CON DEP <b>127.9 379.9</b>	ATLANTA TOWER 8L-26R 8R-26L 9L-27R 9R-27L 10-28 RWYS <b>119.1 125.325 123.85 119.3 119.5 254.4</b>	ALL RWYS <b>121.9</b>	GND CON (8L-26R,8R-26L) (9L-27R,9R-27L) 10-28 RWYS <b>121.75 121.65 254.4</b>	ALL RWYS <b>254.4</b>
-----------------------------	--	--	-----------------------------	---	-----------------------------



## RADAR REQUIRED



CATEGORY	A	B	C	D
S-ILS 8L	1215/18		200 (200-½)	
S-LOC 8L	1440/24	425 (500-½)	1440/40	425 (500-¾)
SIDESTEP 8R	1440/55	416 (500-1)	1440-1½ 416 (500-1½)	1440-2 416 (500-2)

ELEV	1026	TDZE 8L	1015	TDZE 8R	1024
HRL all Rwys TDZ/CL Rwys 8L, 9R, 10, 26R, 27L and 28					
FAF to MAP 5.8 NM					
Knots	60	90	120	150	180
Min:Sec	5:48	3:52	2:54	2:19	1:56

SE-4, 06 DEC 2018 to 03 JAN 2019

SE-4, 06 DEC 2018 to 03 JAN 2019