

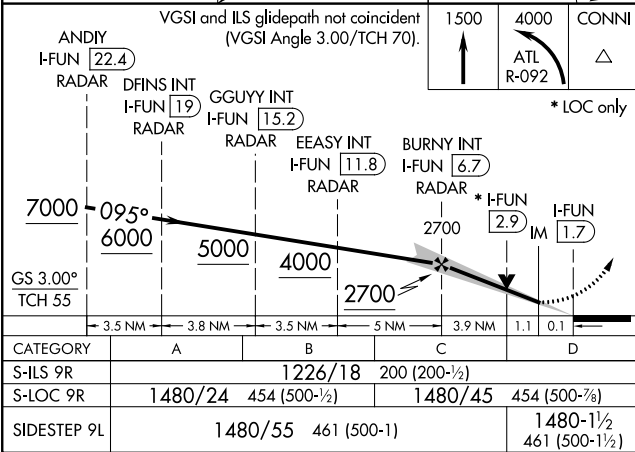
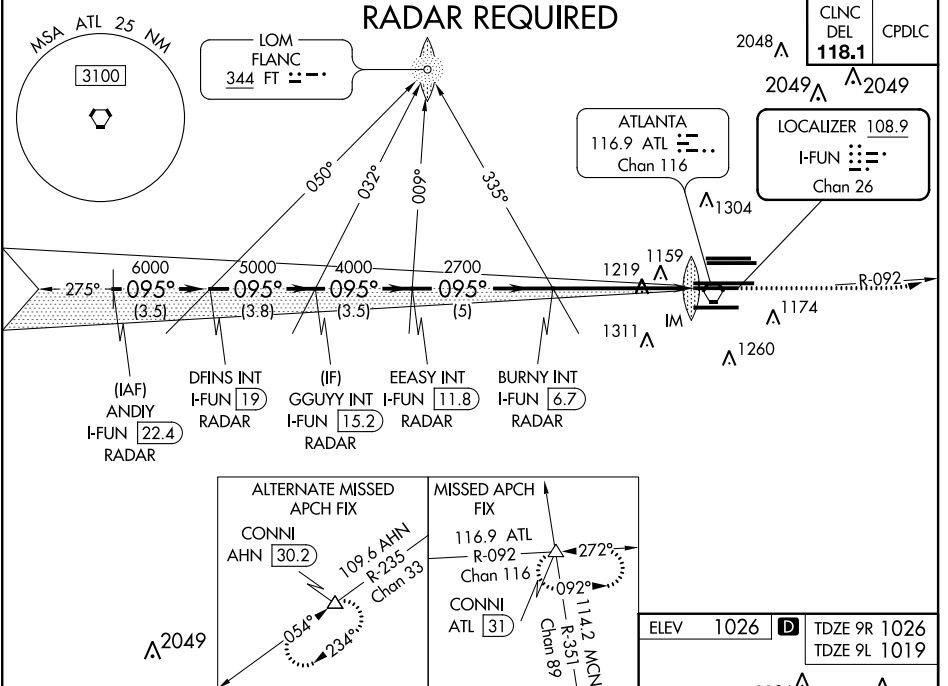
LOC/DME I-FUN 108.9 Chan 26	APP CRS 095°	Rwy Idg TDZE Apt Elev	9R 8925 11730 1026 1019 1026 1026	9L 11730 1019 1026
--	------------------------	-----------------------------	---	--

ILS or LOC RWY 9R

HARTSFIELD-JACKSON ATLANTA INTL (ATL)

<p>▽ Inop table does not apply to sidestep 9L for Cats A and B. ADF or DME or RADAR required. Simultaneous approach authorized with Rwy 8L or 8R.</p>	Rwy 9R ALSF-2 	Rwy 9L MALSR 	MISSED APPROACH: Climb to 1500 then climbing left turn to 4000 on ATL VORTAC R-092 to CONNI INT/ATL 31 DME and hold, or as directed by ATC.

D-ATIS ARR 119.65	ATLANTA APP CON 127.9 379.9	ATLANTA TOWER 8L-26R 8R-26L 9L-27R 9R-27L 10-28 RWYS				ALL RWYS	GND CON 8L-26R,8R-26L (9L-27R,9R-27L) 10-28 RWYS	ALL RWYS
DEP 125.55	127.9 379.9	119.1 125.325	123.85	119.3	119.5 254.4	121.9	121.75	121.65 254.4



ELEV 1026	TDZE 9R 1026	TDZE 9L 1019			
<p>HIRL all Rwy's TDZ/CL Rwy's 8L, 9R, 10, 26R, 27L and 28</p> <p>FAF to MAP 5.1 NM</p>					
Knots	60	90	120	150	180
Min:Sec	5:06	3:24	2:33	2:02	1:42

SE-4, 06 DEC 2018 to 03 JAN 2019

SE-4, 06 DEC 2018 to 03 JAN 2019