

ILS PRM RWY 10 (SA CAT I) (SIMULTANEOUS CLOSE PARALLEL) HARTSFIELD-JACKSON ATLANTA INTL (ATL)

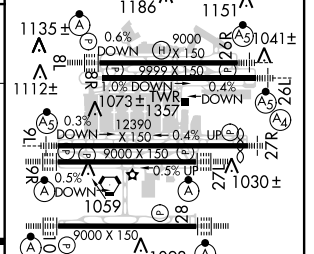
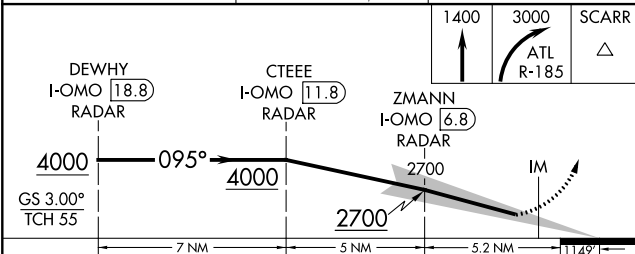
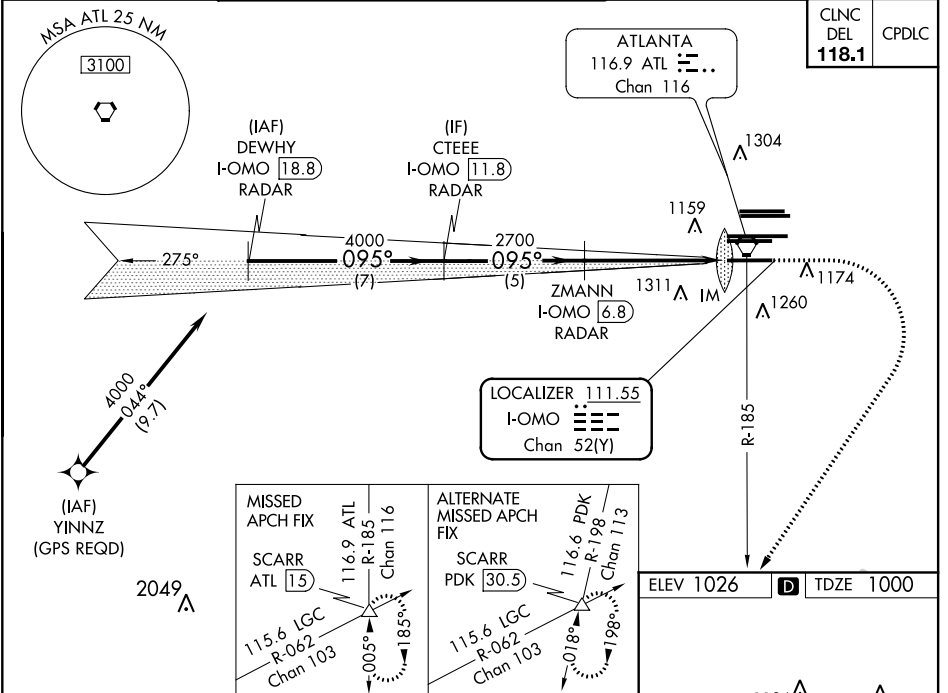
LOC/DME I-OMO 111.55 Chan 52 (Y)	APP CRS 095°	Rwy Idg 9000 TDZE 1000 Apt Elev 1026
--	------------------------	---

▼ DME or RADAR required. Simultaneous close parallel approach authorized with ILS PRM and RNAV PRM Rwy 8L or 8R or 9L or 9R, or Rwy 8L and 9L, or Rwy 8L and 9R, or Rwy 8R and 9L, or Rwy 8R and 9R. Procedure not authorized when glideslope not available. Dual VHF comm required. See additional requirements on AAUP. Localizer not suitable for electronic rollout guidance. Requires specific OPSPEC, MSPEC, or LOA approval and use of HUD to DH.

ALSf-2
(A)

MISSED APPROACH: Climb to 1400 then climbing right turn to 3000 on ATL VORTAC R-185 to SCARR INT/ATL 15 DME and hold.

D-ATIS ARR 119.65 DEP 125.55	ATLANTA APP CON 127.9 379.9	ATLANTA TOWER 8L-26R 8R-26L 9L-27R 9R-27L 10-28 RWYS 119.1 125.325 123.85 119.3 119.5 254.4 PRM 133.425	ALL RWYS 121.9 121.75 121.65 254.4
--	--	--	---



CATEGORY	A	B	C	D
S-ILS 10	RA 180/14 150 DA 1150			

SA CATEGORY I ILS - SPECIAL AIRCREW & AIRCRAFT CERTIFICATION REQUIRED

HIRL all Rwy's
TDZ/CL Rwy's 8L, 9R, 10, 26R, 27L and 28

SE-4, 06 DEC 2018 to 03 JAN 2019

SE-4, 06 DEC 2018 to 03 JAN 2019