

ATLANTA, GEORGIA

AL-26 (FAA)

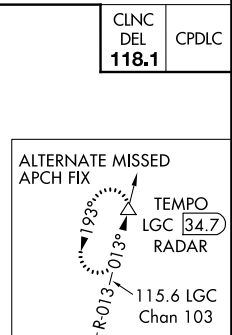
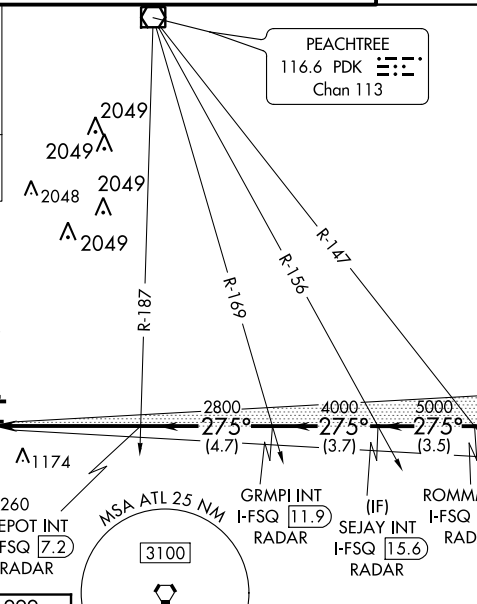
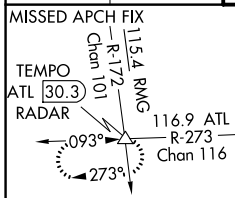
ILS PRM RWY 27L (CAT II) (SIMULTANEOUS CLOSE PARALLEL) HARTSFIELD-JACKSON ATLANTA INTL (ATL)

LOC/DME I-FSQ 108.5 Chan 22	APP CRS 275°	Rwy Idg TDZE Apt Elev	8865 999 1026
---	------------------------	-----------------------------	--

Simultaneous close parallel approach authorized with ILS PRM and RNAV PRM Rwy 26R or 26L or 28, or Rwy 26R and 28, or Rwy 26L and 28. Procedure not authorized when glideslope not available. Dual VHF comm required. See additional requirements on AAUP.

ALSF-2
MISSED APPROACH: Climb to 1400 then climbing left turn to 4000 on ATL VORTAC R-273 to TEMPO INT/ATL 30.3 DME and hold.

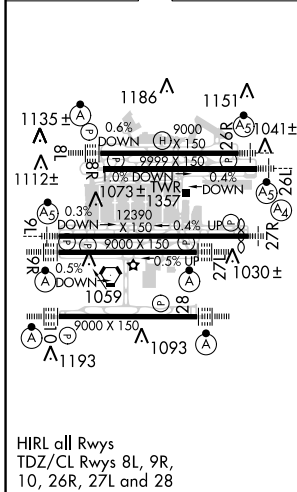
D-ATIS ARR 119.65 DEP 125.55	ATLANTA APP CON 127.9 379.9	ATLANTA TOWER 8L-26R 8R-26L 9L-27R 9R-27L 10-28 RWYS 119.1 125.325 123.85 119.3 119.5 254.4 PRM 132.55	ALL RWYS (8L-26R,8R-26L) (9L-27R,9R-27L) 10-28 121.9 121.75 121.65 254.4	GND CON 121.9 121.75 121.65 254.4
--	---------------------------------------	---	---	---



LOCALIZER 108.5
I-FSQ
Chan 22

ATLANTA 116.9 ATL
Chan 116

ELEV 1026 TDZE 999



RADAR REQUIRED				
1400	4000	TEMPO	VSGL and ILS glidepath not coincident (VSGL Angle 3.00/TCH 79).	SLVAA I-FSQ [22.5] RADAR
ATL R-273			SEJAY INT I-FSQ [15.6] RADAR	ROMMM INT I-FSQ [19.1] RADAR
	DEPOT INT I-FSQ [7.2] RADAR	GRMPI INT I-FSQ [11.9] RADAR		
			275°	7000
	2800	4000	5000	6000
				GS 3.00° TCH 58
	1075	5.5 NM	4.7 NM	3.7 NM
CATEGORY	A	B	C	D
S-ILS 27L	RA 127/12 100 DA 1099			

CATEGORY II ILS- SPECIAL AIRCREW & AIRCRAFT CERTIFICATION REQUIRED

ATLANTA, GEORGIA Amdt 3A 15OCT15 33°38'N-84°26'W HARTSFIELD-JACKSON ATLANTA INTL (ATL)

ILS PRM RWY 27L (CAT II) (SIMULTANEOUS CLOSE PARALLEL)

SE-4, 06 DEC 2018 to 03 JAN 2019

SE-4, 06 DEC 2018 to 03 JAN 2019