

ATLANTA, GEORGIA

AL-26 (FAA)

ILS PRM RWY 27R

(SIMULTANEOUS CLOSE PARALLEL)

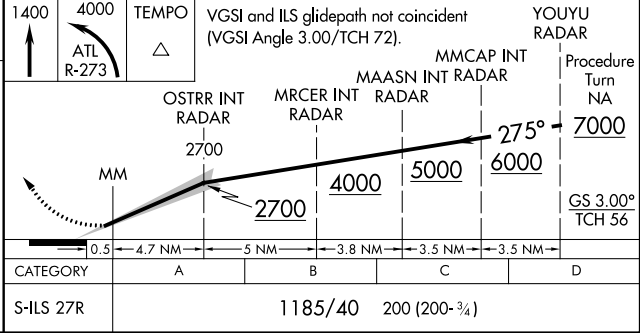
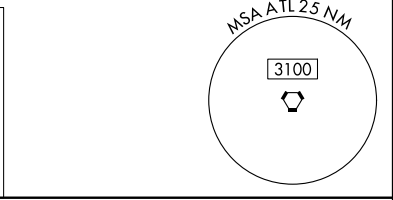
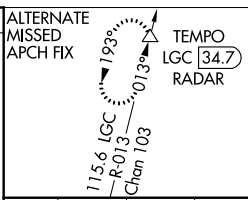
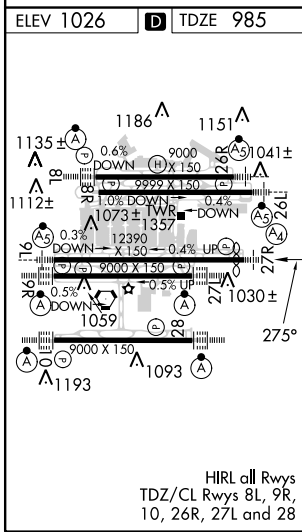
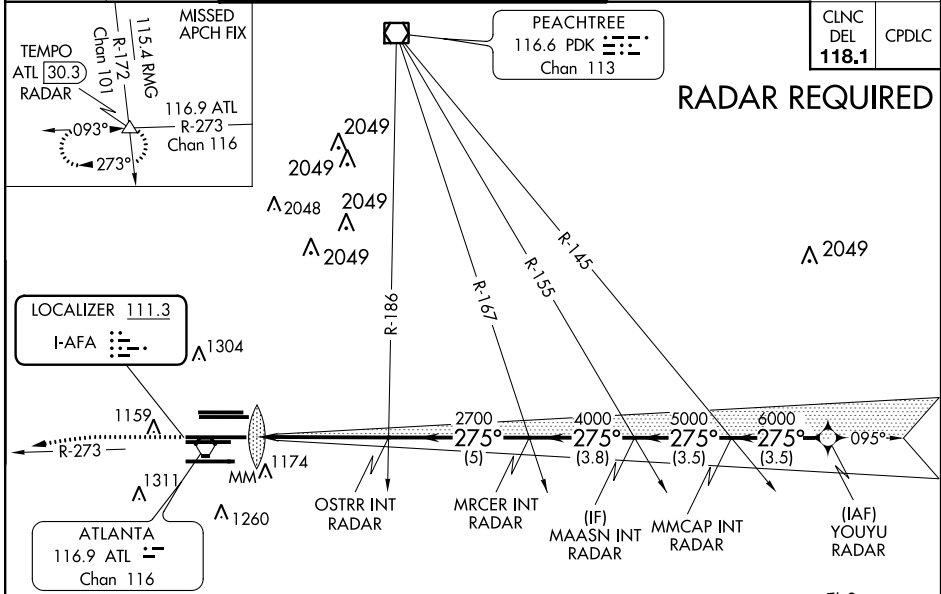
HARTSFIELD-JACKSON ATLANTA INTL (ATL)

| | | | |
|---------------------------|------------------------|-----------------------------|---|
| LOC I-AFA 111.3 | APP CRS 275° | Rwy Idg TDZE Apt Elev | 11690 985 1026 |
|---------------------------|------------------------|-----------------------------|---|

Simultaneous close parallel approach authorized with ILS PRM and RNAV PRM Rwy 26R or 26L or 28, or Rwys 26R and 28, or Rwys 26L and 28. Procedure not authorized when glideslope not available. Dual VHF comm required. See additional requirements on AAUP.

MALS MISSED APPROACH: Climb to 1400 then climbing left turn to 4000 on ATL VORTAC R-273 to TEMPO INT/ATL 30.3 DME/RADAR and hold.

| | | | |
|--|---------------------------------------|---|--|
| D-ATIS ARR 119.65 DEP 125.55 | ATLANTA APP CON 127.9 379.9 | ATLANTA TOWER 8L-26R 8R-26L 9L-27R 9R-27L 10-28 RWYS 119.1 125.325 123.85 119.3 119.5 254.4 PRM 132.55 | ALL RWYS (8L-26R, 8R-26L) (9L-27R, 9R-27L) 10-28 RWYS 121.9 121.75 121.65 254.4 |
|--|---------------------------------------|---|--|



SE-4, 06 DEC 2018 to 03 JAN 2019

SE-4, 06 DEC 2018 to 03 JAN 2019

ATLANTA, GEORGIA Amdt 2 18SEP14

33°38'N-84°26'W

HARTSFIELD-JACKSON ATLANTA INTL (ATL)

ILS PRM RWY 27R (SIMULTANEOUS CLOSE PARALLEL)