

ATLANTA, GEORGIA

AL-26 (FAA)

ILS PRM RWY 28

(SIMULTANEOUS CLOSE PARALLEL)

HARTSFIELD-JACKSON ATLANTA INTL (ATL)

LOC/DME I-PKU 111.75 Chan 54 (Y)	APP CRS 275°	Rwy Ldg 9000 TDZE 998 Apt Elev 1026
--	------------------------	---

Simultaneous close parallel approach authorized with ILS PRM and RNAV PRM Rwy 26R or 26L or 27R or 27L or Rwy 26R and 27R, or Rwy 26R and 27L, or Rwy 26L and 27R, or Rwy 26L and 27L. Procedure not authorized when glideslope not available. Dual VHF comm required. See additional requirements on AAUP.

ALS-F-2



MISSED APPROACH: Climb to 1400 then climbing left turn to 3000 on ATL VORTAC R-185 to SCARR INT/ATL 15 DME and hold.

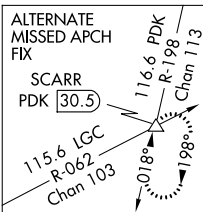
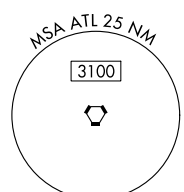
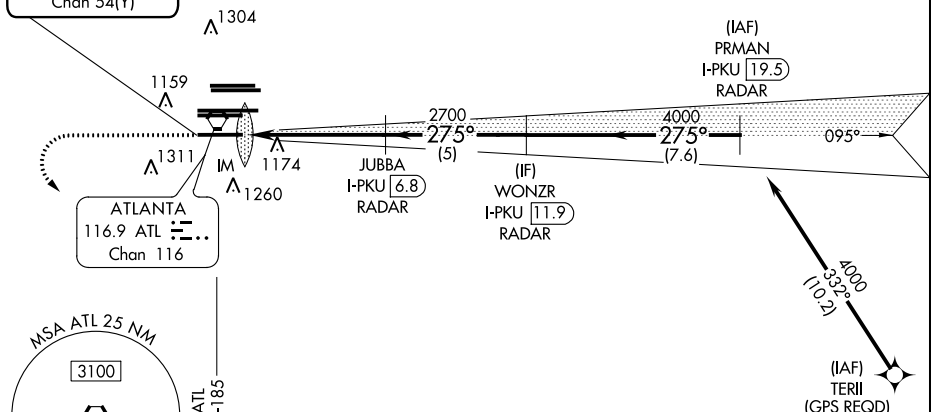
D-ATIS ARR 119.65 DEP 125.55	ATLANTA APP CON 127.9 379.9	ATLANTA TOWER 8L-26R 8R-26L 9L-27R 9R-27L 10-28 RWYS 119.1 125.325 123.85 119.3 119.5 254.4 PRM 133.425	ALL RWYS 121.9 121.75 121.65 254.4
--	---------------------------------------	--	--

GND CON 121.9 121.75 121.65 254.4	ALL RWYS
---	----------

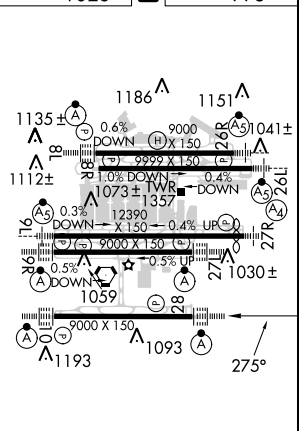
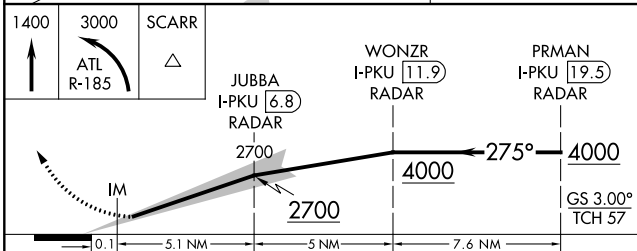
GPS or RADAR REQUIRED

CLNC DEL 118.1	CPDLC
--------------------------	-------

LOCALIZER 111.75
I-PKU
Chan 54(Y)



ELEV 1026 TDZE 998



CATEGORY	A	B	C	D
S-ILS 28	1198/18 200 (200-1/2)			

HIRL all Rwy's
TDZ/CL Rwy's 8L, 9R,
10, 26R, 27L and 28

SE-4, 06 DEC 2018 to 03 JAN 2019

SE-4, 06 DEC 2018 to 03 JAN 2019

ATLANTA, GEORGIA
Amdt 4 18SEP14

33°38'N-84°26'W

HARTSFIELD-JACKSON ATLANTA INTL (ATL)

ILS PRM RWY 28 (SIMULTANEOUS CLOSE PARALLEL)