

ATLANTA, GEORGIA

AL-26 (FAA)

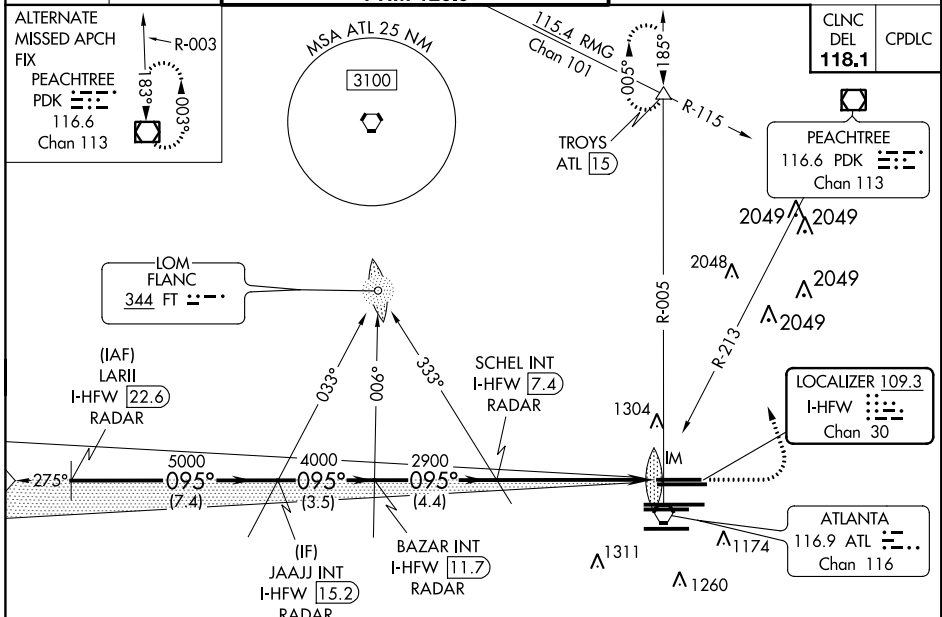
# ILS PRM RWY 8L (CAT II & III) (SIMULTANEOUS CLOSE PARALLEL) HARTSFIELD-JACKSON ATLANTA INTL (ATL)

LOC/DME I-HFW <b>109.3</b> Chan <b>30</b>	APP CRS <b>095°</b>	Rwy Idg TDZE Apt Elev	<b>8800</b> <b>1015</b> <b>1026</b>
-------------------------------------------------	------------------------	-----------------------------	-------------------------------------------

Simultaneous close parallel approach authorized with ILS PRM and RNAV PRM Rwy 9L or 9R or 10, or Rwy 9L and 10, or Rwy 9R and 10. Procedure not authorized when glideslope not available. Dual VHF comm required. See additional requirements on AAPP. ADF or DME or RADAR required.

ALSIF-2  
MISSED APPROACH: Climb to 1500 then climbing left turn to 3500 on ATL VORTAC R-005 to TROYS INT/ATL 15 DME and hold.

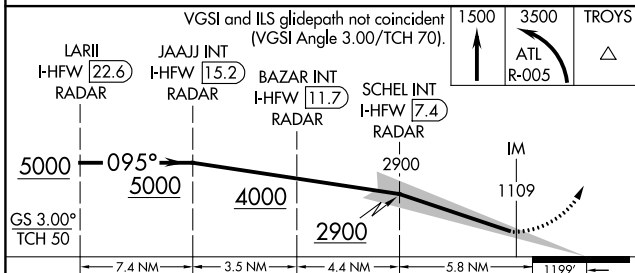
D-ATIS ARR <b>119.65</b> DEP <b>125.55</b>	ATLANTA APP CON <b>127.9 379.9</b>	ATLANTA TOWER 8L-26R 8R-26L 9L-27R 9R-27L 10-28 RWYS <b>119.1 125.325 123.85 119.3 119.5 254.4</b> PRM <b>126.9</b>	ALL RWYS <b>121.9 121.75 121.65 254.4</b>	GND CON 10-28 <b>121.9 121.75 121.65 254.4</b>	ALL RWYS
--------------------------------------------------	------------------------------------------	------------------------------------------------------------------------------------------------------------------------------	----------------------------------------------	------------------------------------------------------	----------



SE-4, 06 DEC 2018 to 03 JAN 2019

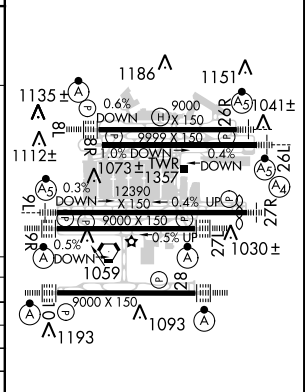
SE-4, 06 DEC 2018 to 03 JAN 2019

## RADAR REQUIRED



CATEGORY	A	B	C	D
S-ILS 8L	CAT II RA 105/12 100 DA 1115			
S-ILS 8L	CAT IIIa RVR 07			
S-ILS 8L	CAT IIIb RVR 06			
S-ILS 8L	CAT IIIc NA			

ELEV 1026	TDZE 1015
-----------	-----------



## CATEGORY II & III ILS - SPECIAL AIRCREW & AIRCRAFT CERTIFICATION REQUIRED

HIRL all Rwy's  
TDZ/CL Rwy's 8L, 9R, 10, 26R,  
27L and 28

ATLANTA, GEORGIA  
Amdt 2 18SEP14

33°38'N-84°26'W

HARTSFIELD-JACKSON ATLANTA INTL (ATL)

# ILS PRM RWY 8L (CAT II & III) (SIMULTANEOUS CLOSE PARALLEL)