

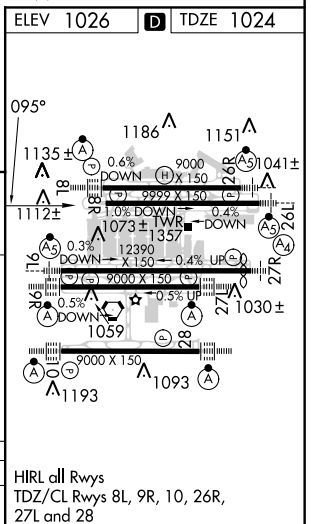
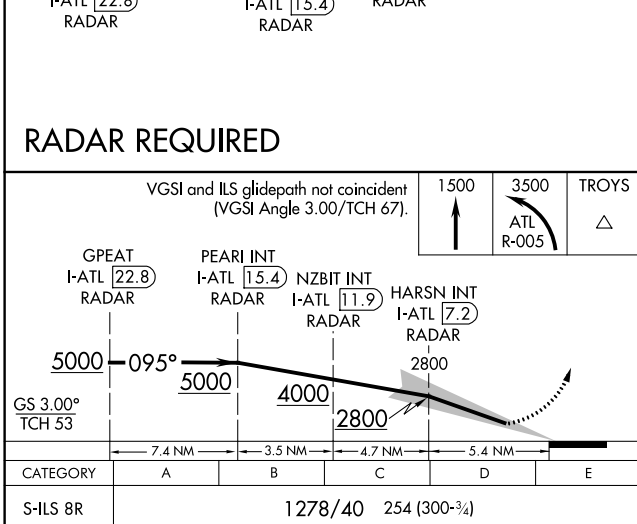
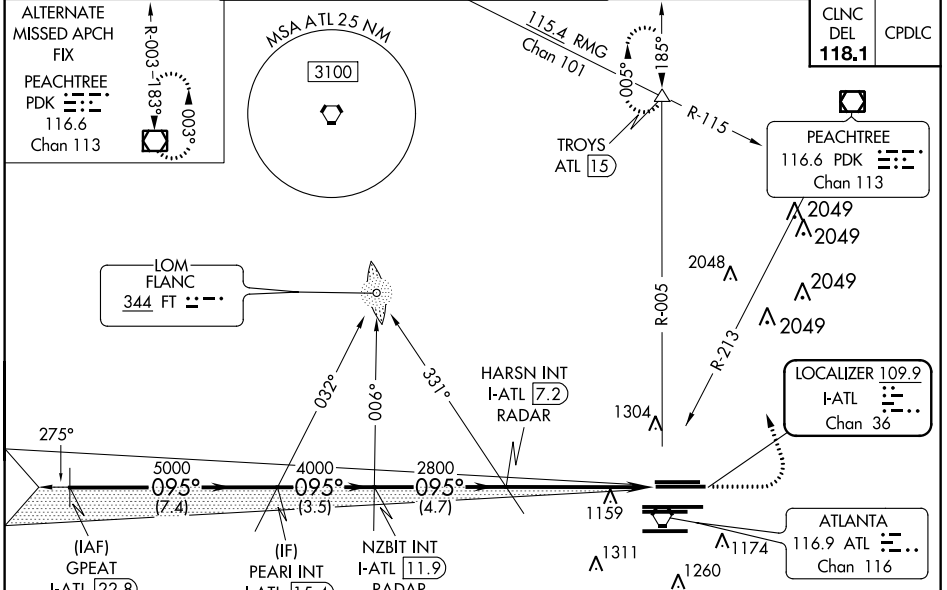
ILS PRM RWY 8R (SIMULTANEOUS CLOSE PARALLEL) HARTSFIELD-JACKSON ATLANTA INTL (ATL)

LOC/DME I-ATL 109.9 Chan 36	APP CRS 095°	Rwy Idg 9999 TDZE 1024 Apt Elev 1026
---	------------------------	---

Simultaneous close parallel approach authorized with ILS PRM and RNAV PRM Rwy 9L or 9R or 10, or Rwys 9L and 10, or Rwys 9R and 10. Procedure not authorized when glideslope not available. Dual VHF comm required. See additional requirements on AAUP. ADF or DME or RADAR required.

MISSED APPROACH: Climb to 1500 then climbing left turn to 3500 on ATL VORTAC R-005 to TROYS INT/ATL 15 DME and hold. (TACAN aircraft climb to 1500 then climbing left turn to 3500 on heading 005° for RADAR vectors.)

D-ATIS ARR 119.65 DEP 125.55	ATLANTA APP CON 127.9 379.9	ATLANTA TOWER 8L-26R 8R-26L 9L-27R 9R-27L 10-28 RWYS 119.1 125.325 123.85 119.3 119.5 254.4 PRM 126.9	ALL RWYS 121.9	GND CON 121.75	ALL RWYS 254.4
--	---------------------------------------	--	--------------------------	--------------------------	--------------------------



SE-4, 06 DEC 2018 to 03 JAN 2019

SE-4, 06 DEC 2018 to 03 JAN 2019