

LOC/DME I-HZK 110.5 Chan 42	APP CRS 095°	Rwy Idg 11730 TDZE 1019 Apt Elev 1026
---	------------------------	--

ILS PRM RWY 9L (SIMULTANEOUS CLOSE PARALLEL)

HARTSFIELD-JACKSON ATLANTA INTL (ATL)

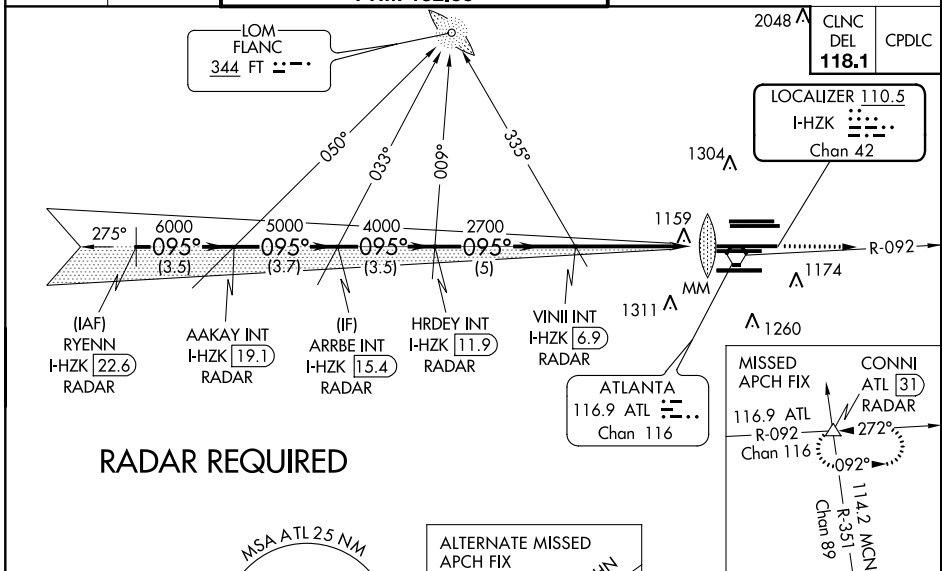
Simultaneous close parallel approach authorized with ILS PRM and RNAV PRM Rwy 8L or 8R or 10, or Rwy 8L and 10, or Rwy 8R and 10. Procedure not authorized when glideslope not available. Dual VHF Comm required. See additional requirements on AAUP. ADF or DME or RADAR required. For inoperative MALS, increase S-ILS 9L all Cats visibility to RVR 6000. Helicopter visibility reduction below RVR 4000 not authorized.

MALS

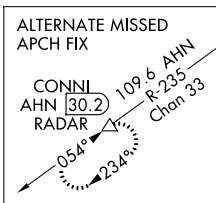
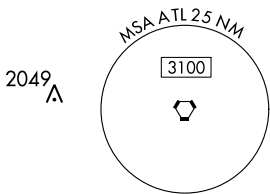


MISSED APPROACH: Climb to 1500 then climbing left turn to 4000 on ATL VORTAC R-092 to CONN1 INT/ATL 31 DME/RADAR and hold.

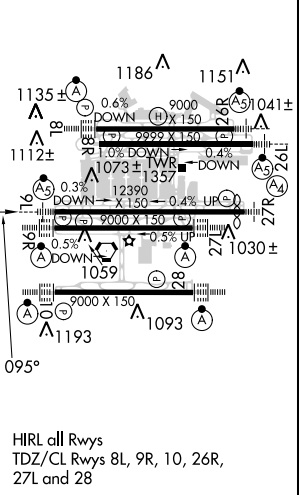
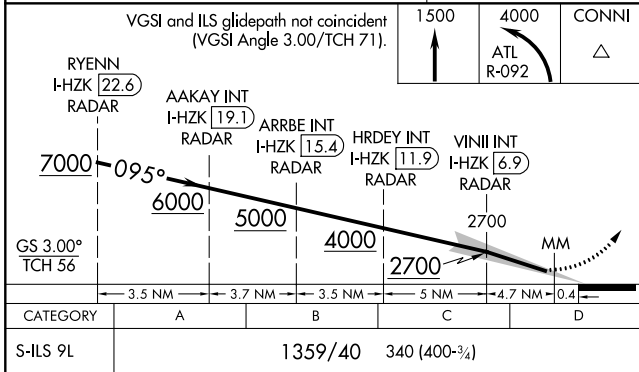
D-ATIS ARR 119.65 DEP 125.55	ATLANTA APP CON 127.9 379.9	ATLANTA TOWER 8L-26R 8R-26L 9L-27R 9R-27L 10-28 RWYS 119.1 125.325 123.85 119.3 119.5 254.4 PRM 132.55	ALL RWYS (8L-26R, 8R-26L) (9L-27R, 9R-27L) 10-28 121.9 121.75 121.65 254.4
--	--	---	--



RADAR REQUIRED



ELEV 1026	TDZE 1019
-----------	-----------



SE-4, 06 DEC 2018 to 03 JAN 2019

SE-4, 06 DEC 2018 to 03 JAN 2019