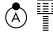


WAAS CH 65700 W27A	APP CRS 275°	Rwy Idg TDZE Apt Elev	8865 999 1026
--	------------------------	-----------------------------	--

RNAV (GPS) RWY 27L

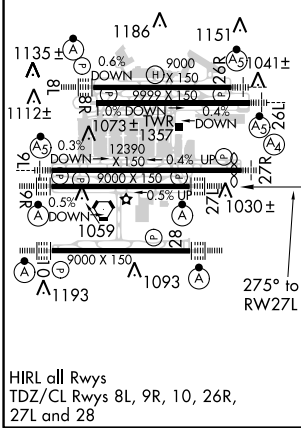
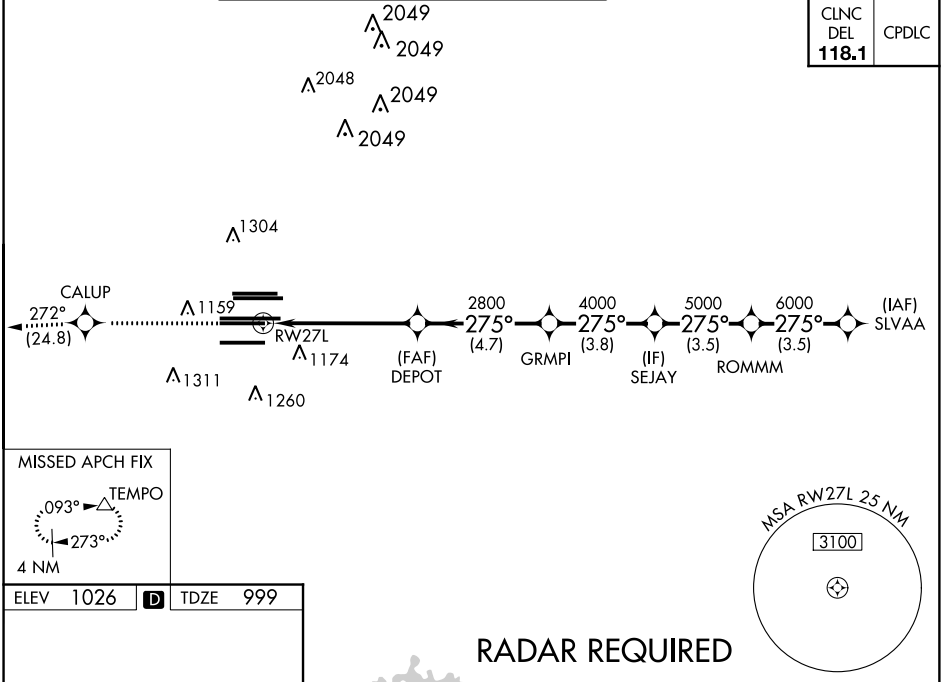
HARTSFIELD-JACKSON ATLANTA INTL (ATL)

▼ For uncompensated Baro-VNAV systems, LNAV/VNAV NA below -7°C (20°F) or above 54°C (130°F). DME/DME RNP-0.3 NA. Simultaneous approach authorized with Rwy 26R or 26L. LNAV procedure NA during simultaneous operations. Use of FD or AP providing RNAV track guidance required during simultaneous operations.

ALSF-2 

MISSED APPROACH: Climb to 4000 direct CALUP and on track 272° to TEMPO and hold.

D-ATIS ARR 119.65 DEP 125.55	ATLANTA APP CON 127.9 379.9	ATLANTA TOWER 8L-26R 8R-26L 9L-27R 9R-27L 10-28 RWYS 119.1 125.325 123.85 119.3 119.5 254.4				ALL RWYS 121.9	GND CON (8L-26R,8R-26L) (9L-27R,9R-27L) 10-28 RWYS 121.75 121.65 254.4
--	--	--	--	--	--	-----------------------------	---



RADAR REQUIRED

VGSI and RNAV glidepath not coincident (VGSI Angle 3.00/TCH 79).

4000	CALUP	tr 272°	TEMPO	SLVAA
*LNAV only				
RWY 27L DEPOT GRMPI SEJAY ROMMM 7000				
GP 3.00° TCH 58				
1.7 NM 3.8 NM 4.7 NM 3.8 NM 3.5 NM 3.5 NM				
CATEGORY	A	B	C	D
LPV DA	1199/18		200 (200-½)	
LNAV/VNAV DA	1528-1¾		529 (600-1¾)	
LNAV MDA	1620/24	621 (600-½)	1620-1¾	621 (600-1¾)

SE-4, 06 DEC 2018 to 03 JAN 2019

SE-4, 06 DEC 2018 to 03 JAN 2019